

---

# Executive Departments

---

Government exists to serve, and a broad network of government organizations has been created to accomplish that purpose. The Missouri Constitution (Article II, Section 1) states: "The powers of government shall be divided into three distinct departments—the legislative, executive and judicial." This section also prohibits persons within each branch from exercising powers of the other branches. From these three branches spring the variety of organizations which deliver services of state government.

The many different names used by these groups—departments, divisions, agencies, boards, commissions, bureaus, units, sections, programs and others—can make it difficult to determine which area of government is responsible for certain services, and difficult to sort out responsibilities or relationships within the governmental framework.

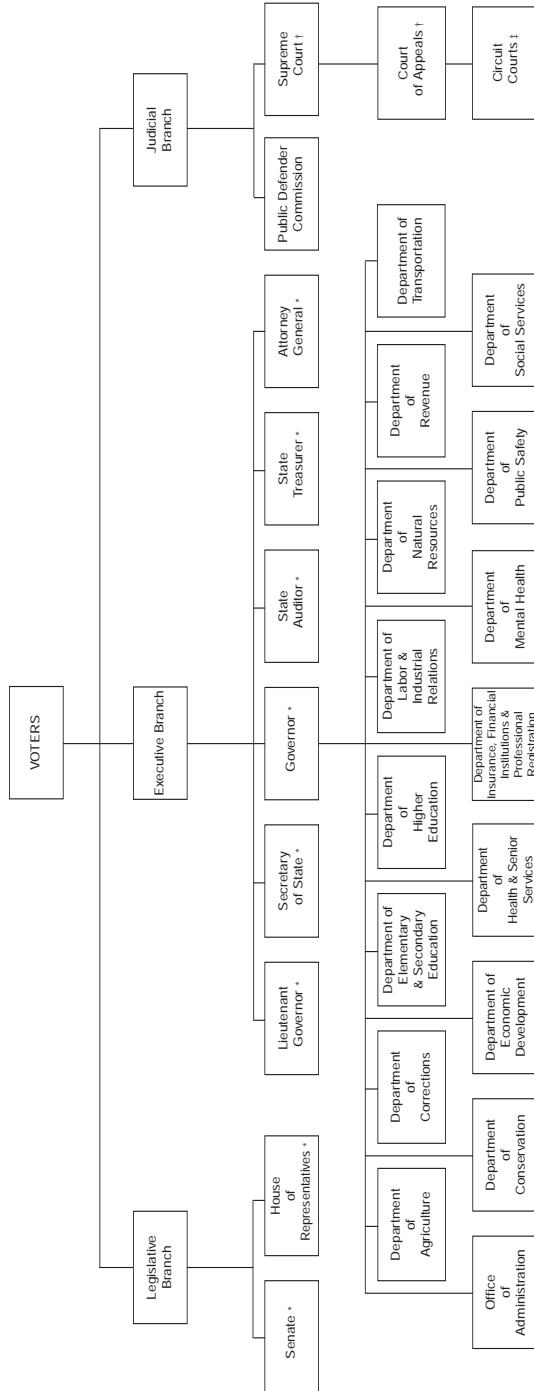
It is through the executive branch that the greatest proportion of state services are delivered. The Constitution (Article IV, Section 12) and the Reorganization Act of 1974 have established a number of "executive departments" to deal with specific areas of interest. A chart showing the present state departments is shown on the following page.

The Missouri Constitution provides for 16 specific departments: the Office of Administration and the departments of Agriculture; Conservation; Corrections; Economic Development; Elementary and Secondary Education; Health and Senior Services; Higher Education; Insurance, Financial Institutions and Professional Registration; Labor and Industrial Relations; Mental Health; Natural Resources; Public Safety; Revenue; Social Services; and Transportation.

Within each executive department exists a variety of offices of varying size and scope which deal with specific services. Traditionally, "divisions" are the next-largest organizations within departments and function to bring together smaller-sized groups, such as "bureaus," "sections" or "units." Divisions may be governed by a "board" or "commission" composed of members who are either appointed by the governor, made members by law or appointed by a department official. State agencies may administer certain sections of state law as defined by the Revised Statutes of Missouri, may develop their own rules and regulations as promulgated in the Missouri Register and Code of State Regulations or may institute programs and policies which address the needs of their areas of service.

Generally speaking, the legislative and judicial branches rely on committees or other small, appointed groups to perform research, develop policy, provide advocacy services or handle administrative duties. In these two branches, services are delivered through the offices of the elected officials themselves and not by related agencies.

Missouri Roster



\* Indicates elected offices

† Indicates appointed offices subject to public vote for retention

‡ Some circuit court judges are elected. Others are appointed under the Missouri Nonpartisan Plan. All are subject to public vote for retention

---

# Office of Administration

---

PO Box 809, Jefferson City 65102  
www.aa.mo.gov

The Office of Administration is the state's service and administrative control agency. Created by the General Assembly on January 15, 1973, it combines and coordinates the central management functions of state government. Its responsibilities were clarified and amended by the Omnibus State of Missouri Reorganization Act of 1974.

The chief administrative officer is the commissioner of administration who is appointed by the governor with the advice and consent of the Senate. The commissioner appoints the deputy commissioners and the division directors of the Office of Administration. The divisions are: Accounting; Budget and Planning; Information Technology Services; Facilities Management, Design and Construction; General Services; Personnel; and Purchasing and Materials Management.

---

Commissioner . . . . .Kelvin L. Simmons. . . . . (573) 751-1851  
*State Capitol, Rm. 125*

Deputy Commissioner and Chief Counsel . . . . .Doug Nelson. . . . . (573) 751-1851  
*State Capitol, Rm. 125*

Assistant Commissioner . . . . .Walter Pearson . . . . . (573) 751-1851  
*State Capitol, Rm. 125*

## Division of Accounting

*Truman State Office Building, Rm. 570*

Director . . . . .Mark A. Kaiser. . . . . (573) 751-2971

## Division of Budget and Planning

*State Capitol, Rm. 124*

Director . . . . .Linda Luebbering . . . . . (573) 751-2345

## Division of Facilities Management, Design and Construction

*Truman State Office Building, Rm. 730*

Director . . . . .Jeff Schaeperkoeter . . . . . (573) 751-2624

## Division of General Services

*Truman State Office Building, Rm. 760*

Director . . . . .Mark S. Kaiser. . . . . (573) 751-0929

## Division of Information Technology Services

*Truman State Office Building, Rm. 280*

Chief Information Officer . . . . .Bill Bryan . . . . . (573) 751-3290

## Division of Personnel

*Truman State Office Building, Rm. 430, PO Box 388*

Director . . . . .Chester White . . . . . (573) 751-4162

## Personnel Advisory Board

*Truman State Office Building, Rm. 430, PO Box 388. . . . . (573) 751-4576*

## Division of Purchasing and Materials Management

*Truman State Office Building, Rm. 630*

Director . . . . .James Miluski . . . . . (573) 751-2387

**Administrative Hearing Commission***Truman State Office Building, Rm. 640*

Commissioner . . . . .	Rod Chapel . . . . .	(573) 751-2422
Commissioner . . . . .	John Kopp . . . . .	(573) 751-2422
Commissioner . . . . .	Doug Ommen . . . . .	(573) 751-2422

**Board of Fund Commissioners***Truman State Office Building, Rm. 570*

Executive Secretary . . . . .	Stacy Neal . . . . .	(573) 751-4761
-------------------------------	----------------------	----------------

**Children's Trust Fund***PO Box 1641, Jefferson City 65102*

Executive Director . . . . .	Kirk Schreiber . . . . .	(573) 751-5147
------------------------------	--------------------------	----------------

**Governor's Council on Disability***Truman State Office Building, Rm. 250-A*

Executive Director . . . . .	Linda Baker . . . . .	(573) 751-2600
------------------------------	-----------------------	----------------

**Health and Educational Facilities Authority***15450 S. Outer Forty Rd., Ste. 230**Chesterfield 63017 . . . . . (636) 519-0700***Jackson County Sports Complex Authority***8501 Stadium Dr., Kansas City 64129 . . . . . (816) 921-3600***Missouri Consolidated Health Care Plan***PO Box 104355, 832 Weathered Rock Ct., Jefferson City 65110 . . . . . (573) 751-8881***Missouri Ethics Commission***PO Box 1370, Jefferson City 65102 . . . . . (573) 751-2020***Missouri Public Entity Risk Management Fund***3425 Constitution Ct., Ste. E**Jefferson City 65109 . . . . . (573) 751-1837***Missouri State Employees' Retirement System***907 Wildwood Dr., PO Box 209, Jefferson City 65102 . . . . . (573) 632-6100***Missouri State Employees' Voluntary Life Insurance Commission***Truman State Office Building, Rm. 579 . . . . . (573) 751-3289***Office of Child Advocate***PO Box 809, Jefferson City 65102*

Child Advocate . . . . .	Steve Morrow . . . . .	(866) 457-2302
--------------------------	------------------------	----------------

**Office of Supplier and Workforce Diversity***Truman State Office Building, Rm. 630*

Director . . . . .	Alan Green . . . . .	(573) 751-8130
--------------------	----------------------	----------------

**Second State Capitol Commission***Truman State Office Building, Rm. 730 . . . . . (573) 751-1034*

---

# Department of Agriculture

---

1616 Missouri Blvd., PO Box 630, Jefferson City 65102  
www.mda.mo.gov

Like Missouri agriculture, the duties of the Missouri Department of Agriculture are diverse. The department enforces those state laws that regulate and market Missouri's agricultural industry. The agency administers programs that protect the state's producers, processors, distributors and consumers of food, fuel and fiber, while marketing Missouri agricultural products at home and abroad.

Created by the General Assembly in 1933, the agriculture department is managed by a director who is appointed by the governor and confirmed by the Senate. The director determines department policy, oversees the department's divisions and disseminates information to the governor, the state legislature, industry representatives and the public.

---

Director . . . . .	Dr. Jon Hagler . . . . .	(573) 751-4211
Deputy Director . . . . .	Dennis Baird . . . . .	(573) 751-4211
General Counsel . . . . .	Michael Warrick . . . . .	(573) 751-5625
Director of Communications . . . . .	Misti Preston . . . . .	(573) 751-8596
Acting Director, Agriculture Business Development . . . . .	Steve Allison . . . . .	(573) 751-4762
Director, Animal Health (State Veterinarian) . . . . .	Dr. Taylor Woods . . . . .	(573) 751-3377
Acting Director, Grain Inspection and Warehousing . . . . .	Loyd Wilson . . . . .	(573) 751-5515
Director, Plant Industries . . . . .	Judy Grundler . . . . .	(573) 751-2462
Director, Weights and Measures . . . . .	Ron Hayes . . . . .	(573) 751-4316

## State Milk Board

Executive Secretary . . . . . Gene Wiseman . . . . . (573) 522-3206

## Missouri Agricultural and Small Business Development Authority (MASBDA)

Executive Director . . . . . Tony Stafford . . . . . (573) 751-2129

## Missouri Wine and Grape Board

Executive Director . . . . . Jim Anderson . . . . . (573) 751-6807

## Missouri State Fair

2503 W. 16th St., Sedalia 65301

Director . . . . . Mark Wolfe . . . . . (660) 827-8150

## Missouri Agricultural Statistics Service

PO Box L, Columbia 65205

State Statistician . . . . . Gene Danekas . . . . . (573) 876-0950

---

# Department of Conservation

---

2901 W. Truman Blvd., PO Box 180, Jefferson City 65102-0180, (573) 751-4115  
[www.mdc.mo.gov](http://www.mdc.mo.gov)

The Department of Conservation, authorized in 1937 by an initiative process and statewide vote to amend the Missouri Constitution, was created by public demand for better management of the state's fish, forest and wildlife resources. The department is headed by the Conservation Commission, whose four members, no more than two of whom may belong to the same political party, are appointed by the governor with the advice and consent of the Senate. They serve without compensation for staggered six-year terms.

The commissioners appoint the the department director who, along with three assistant directors, directs programs and activities through the divisions of administrative services, design and development, fisheries, forestry, human resources, outreach and education, private land services, protection, resource science and wildlife. The department's principal sources of revenue are receipts from the sale of hunting and fishing permits and the one-eighth of one percent conservation sales tax. Funds are also received from contracts and grants, primarily on a matching basis, from federal aid provisions of the Wildlife Restoration, Sport Fish Restoration and Cooperative Forestry Assistance Acts.

---

## Conservation Commission

Member . . . . .	Don R. Johnson . . . . .	(573) 522-4115, ext. 3211
Member . . . . .	William (Chip) McGeehan . . . . .	(573) 522-4115, ext. 3211
Member . . . . .	Lowell Mohler . . . . .	(573) 522-4115, ext. 3211
Member . . . . .	Becky L. Plattner . . . . .	(573) 522-4115, ext. 3211

## Administration

Director . . . . .	John D. Hoskins . . . . .	(573) 522-4115, ext. 3212
Assistant Director - Field . . . . .	David Erickson . . . . .	(573) 522-4115, ext. 3217
Assistant Director - Governmental Relations (legislative liaison) . . . . .	Bob Ziehmer . . . . .	(573) 522-4115, ext. 3601
Assistant Director - Public Affairs . . . . .	Tim Ripperger . . . . .	(573) 522-4115, ext. 3216
General Counsel . . . . .	Tracy McGinnis . . . . .	(573) 522-4115, ext. 3210
Internal Auditor . . . . .	Nancy Dubbert . . . . .	(573) 522-4115, ext. 3522

## Division Chiefs

Administrative Services . . . . .	Carter Campbell . . . . .	(573) 522-4115, ext. 3606
Design and Development . . . . .	Bill Lueckenhoff . . . . .	(573) 522-4115, ext. 3734
Fisheries . . . . .	Bill Turner . . . . .	(573) 522-4115, ext. 3174
Forestry . . . . .	Lisa Allen . . . . .	(573) 522-4115, ext. 3120
Human Resources . . . . .	Debbie Strobel . . . . .	(573) 522-4115, ext. 3225
Outreach and Education . . . . .	Lorna Domke . . . . .	(573) 522-4115, ext. 3235
Private Land Services . . . . .	Bill McGuire . . . . .	(573) 522-4115, ext. 3148
Protection . . . . .	Larry Yamnitz . . . . .	(573) 522-4115, ext. 3254
Resource Science . . . . .	Ron Dent . . . . .	(573) 522-4115, ext. 3168
Wildlife . . . . .	DeeCee Darrow . . . . .	(573) 522-4115, ext. 3118

---

# Department of Corrections

---

PO Box 236, Jefferson City 65102  
[www.doc.mo.gov](http://www.doc.mo.gov)

The Missouri Department of Corrections is responsible for administering the sentences set by the court in ways that promote public safety at the lowest cost to the taxpayers. Offenders assigned to the Department are successfully managed by ensuring they are supervised at the correct custody or supervision level.

The Department of Corrections is committed to the philosophy of improving offenders' transition from prison to the community through implementation of the Missouri Reentry Process (MRP). This involves collaborative efforts with other state agencies and community organizations to identify and manage the factors contributing to the health, safety and prosperity of Missouri communities. Improved public safety requires a comprehensive effort between the Department of Corrections, the state's criminal justice system (including the courts, state and local law enforcement), state agencies, our communities, and the General Assembly to effectively manage every offender sentenced to supervision by the Department.

The Office of the Director oversees the operations of the four divisions within the Department. The Division of Adult Institutions oversees the custody and care of inmates within correctional institutions across the state. The Division of Probation and Parole is responsible for the community supervision of offenders. The Board of Probation and Parole consists of seven members appointed by the Governor with the advice and consent of the Senate. The Board conducts hearings and makes recommendations on parole reviews. The Division of Offender Rehabilitative Services provides program services to felons assigned to probation, parole or prison. Staff-related activities, support services and special programs are provided through the Division of Human Services.

---

## Office of the Director

Director . . . . .	George A. Lombardi . . . . .	(573) 526-6607
Deputy Director . . . . .	David Rost . . . . .	(573) 526-6607
General Counsel . . . . .	Gail Vasterling . . . . .	(573) 522-1634
Reentry Services . . . . .	Julie Kempker . . . . .	(573) 522-1206
Victim Services . . . . .	Kay Crockett . . . . .	(573) 526-6516
Legislation Services . . . . .	Matt Sturm . . . . .	(573) 526-6499
Constituent Services . . . . .	Lisa Jones . . . . .	(573) 526-6530
Budget, Research and Evaluation . . . . .	Joe Eddy . . . . .	(573) 522-1207
Inspector General . . . . .	Chris Pickering . . . . .	(573) 526-6504
Public Information Office . . . . .		(573) 522-1118
Emergency Preparedness/Workplace Violence . . . . .	Michelle Kasak . . . . .	(573) 522-8456

## Division of Human Services

Director . . . . .	Victoria Myers . . . . .	(573) 526-6472
Human Resources . . . . .	Rosie Shelton . . . . .	(573) 526-6475
Training and Staff Development . . . . .		(573) 751-4040
Employee Health and Safety . . . . .	Julie Ives . . . . .	(573) 526-6518
Religious/Spiritual Programming . . . . .	Doug Worsham . . . . .	(573) 526-6489
Volunteer Services . . . . .	Melissa Massman . . . . .	(573) 526-6491
General Services . . . . .	Jay Edwards . . . . .	(573) 751-6999
Fiscal Management . . . . .	Lenard Lenger . . . . .	(573) 526-6441
Planning . . . . .	Jana Bott . . . . .	(573) 526-6587

**Division of Offender Rehabilitative Services**

Director . . . . .	Dr. Mariann Atwell . . . . .	(573) 526-6493
Assistant Director, Health Services . . . . .	Deloise Williams . . . . .	(573) 526-6498
Assistant Director, Education Services . . . . .	Tony Spillers . . . . .	(573) 526-6534
Assistant Director, Substance Abuse Services . . . . .	Dr. Marta Nolin . . . . .	(573) 526-6545
Chief, Mental Health Services . . . . .	Dr. Greg Markway . . . . .	(573) 526-6523
Assistant Director, Missouri Vocational Enterprises . . . . .	John Scott . . . . .	(573) 751-6663
Boonville Treatment Center, <i>PO Box 67, Boonville 65233</i> Substance Abuse Unit Supervisor . . . . .	Randall Robb . . . . .	(660) 882-6521
Cremer Therapeutic Community Center, <i>PO Box 70, Fulton 65251</i> Warden . . . . .	Cindy Steuber . . . . .	(573) 592-4013
Farmington Treatment Center, <i>1014 W. Columbia, Farmington 63640</i> Clinical Director . . . . .	John Colligan . . . . .	(573) 756-8001
Maryville Treatment Center, <i>30227 US Hwy. 136, Maryville 64468-9516</i> Clinical Director . . . . .	Dr. Gawaine Banks . . . . .	(660) 582-6542
Western Region Treatment Center, <i>3401 Faraon, St. Joseph 64506</i> Clinical Director . . . . .	Denise Reynolds . . . . .	(816) 387-2264

**Division of Adult Institutions**

Director . . . . .	Tom Clements . . . . .	(573) 526-6524
Deputy Director, Zone I . . . . .	Mike Kemna . . . . .	(573) 526-6548
Deputy Director, Zone II . . . . .	Dwayne Kempker . . . . .	(573) 522-1926
Deputy Director, Zone III . . . . .	Patricia Cornell . . . . .	(573) 526-6532
Assistant to the Director . . . . .	Alan Earls . . . . .	(573) 526-6526
Security Coordinator . . . . .	Derek Hines . . . . .	(573) 522-6526
Central Transfer Authority . . . . .	Chrystal Schmitz . . . . .	(573) 526-6436

**Institutions**

Algoa Correctional Center, <i>8501 No More Victims Rd., Jefferson City 65101</i> Warden . . . . .	Ellis McSwain . . . . .	(573) 751-3911
Boonville Correctional Center, <i>1216 E. Morgan, Boonville 65233</i> Warden . . . . .	John Bowen . . . . .	(660) 882-6521
Chillicothe Correctional Center, <i>1500 W. Third St., Chillicothe 64601</i> Warden . . . . .	Jennifer Miller . . . . .	(660) 646-4032
Crossroads Correctional Center, <i>1115 E. Pence Rd., Cameron 64429</i> Warden . . . . .	Larry Denney . . . . .	(816) 632-2727
Eastern Reception, Diagnostic and Correctional Center, <i>2727 Hwy. K, Bonne Terre 63628</i> Acting Warden . . . . .	Steve Larkins . . . . .	(573) 358-5516
Farmington Correctional Center, <i>1012 W. Columbia, Farmington 63640</i> Warden . . . . .	Al Luebbers . . . . .	(573) 218-7100
Fulton Reception and Diagnostic Center, <i>PO Box 190, Fulton 65251</i> Acting Warden . . . . .	Mike Payne . . . . .	(573) 592-4040
Jefferson City Correctional Center, <i>8200 No More Victims Rd., Jefferson City 65101</i> Warden . . . . .	Dave Dormire . . . . .	(573) 751-3224
Maryville Treatment Center, <i>30227 US Hwy. 136, Maryville 64468-9516</i> Warden . . . . .	Joe Ledbetter . . . . .	(660) 582-6542
Missouri Eastern Correctional Center, <i>18701 Hwy. 66, Pacific 63069</i> Warden . . . . .	Jennifer Sachse . . . . .	(636) 257-3322
Moberly Correctional Center, <i>PO Box 7, Moberly 65270</i> Warden . . . . .	Dean Minor . . . . .	(660) 263-3778



Northeast Correctional Center, <i>13698 Pike 46 Airport Rd., Bowling Green 63334</i>	
Warden . . . . .	Scott Lawrence . . . . . (573) 324-9975
Ozark Correctional Center (Lease/Purchase), <i>929 Honor Camp Ln., Fordland 65652</i>	
Warden . . . . .	Ed Davis . . . . . (417) 767-4491
Potosi Correctional Center (Lease/Purchase), <i>11593 State Hwy. O, Mineral Point 63660</i>	
Warden . . . . .	Don Roper . . . . . (573) 438-6000
Southeast Correctional Center, <i>300 E. Pedro Simmons Dr., Charleston 63834</i>	
Warden . . . . .	Troy Steele . . . . . (573) 683-4409
South Central Correctional Center, <i>255 Hwy. 32 West, Licking 65542</i>	
Warden . . . . .	Michael Bowersox . . . . . (573) 674-4470
Tipton Correctional Center, <i>619 N. Osage Ave., Tipton 65081-8038</i>	
Warden . . . . .	Jill McGuire . . . . . (660) 433-2031
Western Missouri Correctional Center, <i>609 E. Pence Rd., Cameron 64429</i>	
Warden . . . . .	Jean Ann Johnson . . . . . (816) 632-1390
Western Reception, Diagnostic and Correctional Center, <i>3401 Faraon, St. Joseph 64506</i>	
Warden . . . . .	William Burgess . . . . . (816) 387-2158
Women's Eastern Reception, Diagnostic and Correctional Center, <i>PO Box 300, 1101 E. Hwy. 54, Vandalia 63382</i>	
Warden . . . . .	Cyndi Prudden . . . . . (573) 594-6686

### Division of the Board of Probation and Parole

*1511 Christy Dr., PO Box 267, Jefferson City 65102, (573) 751-8488*

Chair . . . . .	Steve Long . . . . . (573) 751-8488
Member . . . . .	Brian Jamison . . . . . (573) 751-8488
Member . . . . .	Chuck Pryor . . . . . (573) 751-8488
Member . . . . .	Jim Wells . . . . . (573) 751-8488
Member . . . . .	Penny Hubbard . . . . . (573) 751-8488
Member . . . . .	Robert Robinson . . . . . (573) 751-8488
Member . . . . .	Reid Forrester . . . . . (573) 751-8488
Chief State Supervisor . . . . .	Scott Johnston . . . . . (573) 522-1515
Assistant Division Director . . . . .	Tom Hodges . . . . . (573) 526-6570
Probation and Parole Administrators	
Region I . . . . .	Nancy McCarthy . . . . . (314) 877-1176
<i>220 S. Jefferson, St. Louis 63103</i>	
Region II . . . . .	Jackie Dunn . . . . . (816) 792-0793
<i>910 Kent, Liberty 64068</i>	
Region III . . . . .	Dardi Smith . . . . . (417) 895-5700
<i>1735 W. Catalpa, Ste. A, Springfield 65807</i>	
Region IV . . . . .	Glenn Brucker . . . . . (636) 940-3333
<i>211 Compass Point, St. Charles 63301</i>	
Region V . . . . .	Deborah Cotner . . . . . (636) 789-3392
<i>4621 Yeager Rd., Hillsboro 63050</i>	
Region VI . . . . .	Brent Morris . . . . . (816) 792-0793
<i>910 Kent, Liberty 64068</i>	

---

# Department of Economic Development

---

*PO Box 1157, Jefferson City 65102*  
*www.ded.mo.gov*

The Department of Economic Development administers a wide array of programs related to job creation and retention, community and workforce development.

Divisions and programs relating to development are Business and Community Service, Tourism, the Missouri Arts Council, the Missouri Housing Development Commission, the Missouri Development Finance Board, Division of Workforce Development and the Women's Council.

The Missouri Public Service Commission and the Office of the Public Counsel are also part of the department.

The department is administered by a director appointed by the governor and confirmed by the Missouri Senate. The director appoints central management staff and principal division directors.

---

## Administrative Services

*Truman State Office Building, Rm. 680, PO Box 1157, Jefferson City 65102*

Director . . . . .	Linda Martinez . . . . .	(573) 751-4962
Deputy Director . . . . .	(Vacancy) . . . . .	(573) 751-3946
Director, Administration . . . . .	Sarah Schuette . . . . .	(573) 751-1874
Director, Communications . . . . .	John Fougere . . . . .	(573) 522-5058
Legislative Liaison . . . . .	Julie Murphy-Finn . . . . .	(573) 526-8216
General Counsel . . . . .	Karen Winn . . . . .	(573) 751-5095

## Division of Business and Community Services

*Truman State Office Building, Rm. 720, PO Box 118, Jefferson City 65102*

Director . . . . .	Sallie Hemenway . . . . .	(573) 751-8497
--------------------	---------------------------	----------------

## Missouri Arts Council

*Wainwright State Office Complex, 111 N. Seventh St., Ste. 105, St. Louis 63101*

Chair . . . . .	Sharon Beshore . . . . .	(314) 340-6845
Executive Director . . . . .	Beverly Strohmeyer . . . . .	(314) 340-6845

## Missouri Development Finance Board

*Governor Office Building, 200 Madison St., Ste. 1000, PO Box 567, Jefferson City 65102*

Chair . . . . .	Linda Martinez . . . . .	(573) 751-2695
Director . . . . .	Bob Miserez . . . . .	(573) 751-8479

## Missouri Housing Development Commission

*3435 Broadway, Kansas City 64111*

Chair . . . . .	Claudia Onate Greim . . . . .	(816) 759-6600
Director . . . . .	Pete Ramsel . . . . .	(816) 759-6600

## Division of Tourism

*Truman State Office Building, Rm. 290, PO Box 1055, Jefferson City 65102*

Chair . . . . .	Lt. Governor Peter Kinder . . . . .	(573) 751-3051
Director (Interim) . . . . .	Bob Smith . . . . .	(573) 751-3051

**Division of Workforce Development**

*421 E. Dunklin, PO Box 1087, Jefferson City 65101*

Director . . . . . Julie Gibson . . . . . (573) 751-3349

**Women's Council**

*Truman State Office Building, Rm. 680, PO Box 1157, Jefferson City 65102*

Chair . . . . . Sandy Jones . . . . . (573) 751-0810

Director . . . . . Mary Cottom . . . . . (573) 751-0810

**Office of Public Counsel**

*Governor Office Building, 200 Madison St., PO Box 2230, Jefferson City 65102*

Public Counsel . . . . . Lewis Mills . . . . . (573) 751-4857

**Public Service Commission**

*Governor Office Building, 200 Madison St., PO Box 360, Jefferson City 65102*

Chair . . . . . Robert M. Clayton III. . . . . (573) 751-3234

Commissioner . . . . . Jeff Davis . . . . . (573) 751-3234

Commissioner . . . . . Terry M. Jarrett . . . . . (573) 751-3234

Director . . . . . Kevin Gunn . . . . . (573) 751-3234

# Department of Elementary and Secondary Education

PO Box 480, Jefferson City 65102  
<http://dese.mo.gov>

The Department of Elementary and Secondary Education was reorganized and established in its present form by the Omnibus State Reorganization Act of 1974.

The Department of Elementary and Secondary Education is primarily a service agency that works with local school officials and other groups to identify needs within the educational system and to improve educational opportunities and programs for all citizens. Through its regulatory functions, the department strives to assure the effective and efficient operation of state and federal education programs. Under the direction of the State Board of Education, the department is organized with the offices of commissioner of education, deputy commissioner, associate commissioner, and five other divisions, each of which is headed by an assistant commissioner.

The State Board of Education is a lay board consisting of eight members appointed by the governor and confirmed by the Senate. It is vested with the responsibility for the supervision of the public school system in this state and establishes policy in accordance with state and federal law for the department. The board appoints a commissioner of education who serves as chief administrative and executive officer of the department. The commissioner, along with department staff, interprets and implements policies established by the board. The commissioner is assisted by a deputy commissioner, associate commissioner, and assistant commissioners for each of the other five divisions.

## State Board of Education

*Jefferson State Office Building, 205 Jefferson St., PO Box 480, Jefferson City 65102*

President . . . . .	Russell V. Thompson . . . . .	(573) 751-4446
Vice President . . . . .	David Liechti . . . . .	(573) 751-4446
Member . . . . .	Rev. Stan Archie . . . . .	(573) 751-4446
Member . . . . .	Deborah Demien . . . . .	(573) 751-4446
Member . . . . .	Peter Herschend . . . . .	(573) 751-4446
Member . . . . .	Michael Ponder . . . . .	(573) 751-4446
Member . . . . .	Sybl Slaughter . . . . .	(573) 751-4446
Member . . . . .	(Vacancy) . . . . .	(573) 751-4446
Interim Commissioner of Education . . . . .	Bert Schulte . . . . .	(573) 751-4446
Executive Assistant to the State Board of Education . . . . .	Jeanne Kujath . . . . .	(573) 751-4446
Assistant to the Commissioner of Education . . . . .	Robin Coffman . . . . .	(573) 751-7602
Deputy Commissioner of Education . . . . .	Bert Schulte . . . . .	(573) 751-3503
Associate Commissioner, Division of Administrative & Financial Services . . . . .	Gerri Ogle . . . . .	(573) 751-2587
Assistant Commissioner, Division of School Improvement . . . . .	Stan Johnson . . . . .	(573) 751-4234
Assistant Commissioner, Division of Career Education . . . . .	Tom Quinn . . . . .	(573) 751-2660
Assistant Commissioner, Division of Teacher Quality and Urban Education . . . . .	Charles Brown . . . . .	(573) 751-2931

Assistant Commissioner, Division  
of Special Education . . . . . Heidi Atkins Lieberman . . . . . (573) 751-5739

Assistant Commissioner, Division  
of Vocational Rehabilitation . . . . . Jeanne Loyd . . . . . (573) 751-3251

Superintendent, State Schools  
for Severely Disabled. . . . . Charlie Taylor . . . . . (573) 751-4427

Superintendent, Missouri School for the Blind . . . . James Sucharski. . . . . (314) 776-4320  
*3815 Magnolia Ave., St. Louis 63110*

Superintendent, Missouri School for the Deaf . . . . Barbara Garrison . . . . . (573) 592-4000  
*Fulton 65251*

# Department of Health and Senior Services

912, 920 & 930 Wildwood Dr., PO Box 570, Jefferson City 65102  
www.dhss.mo.gov

The Department of Health and Senior Services protects and promotes quality of life and health for all Missourians by developing and implementing programs and systems that provide: information and education, effective regulation and oversight, quality services, and surveillance of diseases and conditions.

The State Board of Health and the State Board of Senior Services advise the department director in planning for departmental activities and acts in an advisory capacity regarding rules promulgated by the Department of Health and Senior Services. Each board consists of seven members appointed by the governor.

The director of the department, appointed by the governor with the advice and consent of the Senate, is the chief liaison officer of the department for joint efforts with other governmental agencies and with private organizations that conduct or sponsor programs that relate to public health in Missouri.

## State Board of Health

PO Box 570, Jefferson City 65102

Chair . . . . . Donna M. Mannello, D.C. . . . . (573) 751-6001

## State Board of Senior Services

PO Box 570, Jefferson City 65102

Chair . . . . . Mary Anne Brown, PhD, RD, LD (573) 751-6001

## Office of the Director

PO Box 570, Jefferson City 65102

Director . . . . . Margaret T. Donnelly . . . . . (573) 526-6700

Deputy Director . . . . . Nancie McAnagh . . . . . (573) 751-6002

Chief, Office of General Counsel . . . . . Jennifer Stilabower . . . . . (573) 751-6005

Manager, Special Investigations Unit . . . . . Tim Huesgen . . . . . (573) 522-4150

Chief, Office of Governmental Policy and

Manager, Employee Disqualification List . . . . . Debbie Hansen . . . . . (573) 522-1119

Legislation . . . . . Patrick Lynn . . . . . (573) 751-6003

Chief, Office of Human Resources . . . . . Mary Hoskins, MPA . . . . . (573) 751-6059

Chief, Office of Public Information . . . . . Kit Wagar . . . . . (573) 751-6003

Director, State Public Health Laboratory . . . . . John Mathewson, M.S., PhD . . . . . (573) 751-3334  
101 N. Chestnut, Jefferson City 65101

Eastern District Health Office . . . . . (314) 877-2800  
220 S. Jefferson, St. Louis 63103

Northeastern District Health Office . . . . . (660) 385-3125  
708 Patton St., PO Box 309, Macon 63552

Northwestern District Health Office . . . . . (816) 350-5400  
3717 S. Whitney Ave., Independence 64055

Southeastern District Health Office . . . . . (573) 840-9720  
2875 James Blvd, Poplar Bluff 63901

Southwestern District Health Office . . . . . (417) 895-6900  
1414 W. Elfindale, PO Box 777, MPO, Springfield 65801

**Center for Emergency Response and Terrorism***PO Box 570, Jefferson City 65102*

Center Director . . . . . Mike Sampson. . . . . (573) 526-4768  
 Deputy Center Director . . . . . May Kay Hager . . . . . (573) 526-4768

**Division of Administration***PO Box 570, Jefferson City 65102*

Director. . . . . Bret Fischer . . . . . (573) 751-6014  
 Chief, Bureau of Budget Services and Analysis . . . Brian Mack . . . . . (573) 751-6016  
 Chief, Bureau of Financial Services . . . . . Renee Godsey. . . . . (573) 751-6024  
 Chief, Bureau of General Services . . . . . Kevin Kolb . . . . . (573) 751-6040

**Division of Community and Public Health***PO Box 570, Jefferson City 65102*

Director. . . . . Glenda Miller . . . . . (573) 751-6080  
 Deputy Director . . . . . Harold Kirbey . . . . . (573) 751-6080  
 Interim Director, Center for  
 Health Policy and Integration . . . . . Betty Nash . . . . . (573) 526-2787  
 Chief, Office of Performance Management . . . . . Betty Nash. . . . . (573) 526-2787  
 Chief, Office on Women's Health . . . . . Tuck VanDyne . . . . . (573) 526-0445  
 Chief, Office of Epidemiology . . . . . Nick Boshard . . . . . (573) 751-6128  
 Chief, Office of Minority Health . . . . . Joe Palm . . . . . (573) 526-1683  
 Chief, Office of Primary Care  
 and Rural Health . . . . . Marie Peoples . . . . . (573) 751-6219  
 Director, Center for Local Public Health  
 Services. . . . . Anne Lock. . . . . (573) 751-6170  
 Chief, Bureau of Fiscal Services. . . . . Jeff Zoellner. . . . . (573) 751-9071  
 Chief, Bureau of Health Informatics. . . . . Susan Elders . . . . . (573) 751-6272  
 Chief, Bureau of Vital Records. . . . . Michelle Zeilman . . . . . (573) 526-0348  
 Chief, Office of Community Health  
 Information . . . . . Jeanie Bryant. . . . . (573) 526-7811  
 Administrator, Section for Healthy Families  
 and Youth . . . . . Melinda Sanders . . . . . (573) 751-6253  
 Chief, Bureau of Genetics and Healthy  
 Childhood. . . . . Sharmini Rogers . . . . . (573) 751-6266  
 Chief, Bureau of Special Health Care Needs . . . . Gary Harbison. . . . . (573) 751-6246  
 Administrator, Section for Chronic Disease  
 Prevention and Nutrition Services . . . . . Brad Hall. . . . . (573) 522-2800  
 Chief, Bureau of Health Promotion . . . . . Dennis Spurling. . . . . (573) 522-2820  
 Chief, Bureau of Cancer and Chronic Disease  
 Control . . . . . Belinda Heimericks. . . . . (573) 522-2862  
 Chief, Bureau of Community Food and  
 Nutrition Assistance Programs . . . . . Ann McCormack. . . . . (573) 751-6251  
 Chief, Bureau of WIC and Nutrition Services. . . . Lyn Konstant . . . . . (573) 751-6204  
 Administrator, Section for Disease Control  
 and Environmental Epidemiology . . . . . Scott Clardy. . . . . (573) 751-6141  
 Chief, Bureau of Environmental  
 Epidemiology . . . . . Cherri Baysinger . . . . . (573) 751-6102  
 Chief, Bureau of HIV, STD, and Hepatitis . . . . . Michael Herbert . . . . . (573) 751-6439  
 Chief, Bureau of Communicable Disease  
 Control and Prevention . . . . . Harvey Marx. . . . . (573) 751-6113  
 Chief, Bureau of Immunization Assessment  
 and Assurance. . . . . Jeannie Ruth . . . . . (573) 751-6124  
 Interim Chief, Environmental Regulations and  
 Licensure Unit. . . . . Kristi Campbell . . . . . (573) 751-6111

**Division of Regulation and Licensure***PO Box 570, Jefferson City 65102*

Director .....	Teresa Generous .....	(573) 751-8535
Deputy Director .....		(573) 751-6069
Chief, Family Care Safety Registry .....	Melanie Madore .....	(573) 526-1974
Administrator, Section for Health Standards and Licensure .....	Dean Linneman .....	(573) 526-1864
Interim Director, Section for Long Term Care Regulation .....	Shelly Williamson .....	(573) 526-8524
State Long Term Care Ombudsman .....	Carol Scott .....	(573) 526-0727
State Board of Nursing Home Administrators Chair .....	Myra Aud .....	(573) 884-9539
Executive Secretary, Board of Nursing Home Administrators .....	Diana Love .....	(573) 751-3511
Regional Office #1 .....	(Vacancy) .....	(417) 895-6435
<i>149 Park Central Square, Rm. 429, Springfield 65806</i>		
Regional Office #2 .....		(573) 840-9580
<i>2875 James Blvd., Poplar Bluff 63901-3395</i>		
Regional Office #3 .....		(816) 889-2808
<i>1410 Genessee, Ste. 130, Kansas City 64106</i>		
Regional Office #4 .....		(816) 632-6541
<i>207 E. McElwain, PO Box 633, Cameron 64429</i>		
Regional Office #5 .....		(660) 385-5763
<i>1716 Prospect, Ste. C, PO Box 472, Macon 63552</i>		
Regional Office #6 .....		(573) 751-2270
<i>3418 Knipp Dr., Ste. D, PO Box 915, Jefferson City 65102</i>		
Regional Office #7 .....		(314) 340-7360
<i>815 Olive St., Ste. 10, St. Louis 63101</i>		
Missouri Health Facilities Review Committee/ Certificate of Need Program .....		(573) 751-6403

**Division of Senior and Disability Services***PO Box 570, Jefferson City 65102*

Director .....	Brenda Campbell, MPA .....	(573) 526-3626
Deputy Director .....	Randy Rodgers .....	(573) 526-3626
Home and Community Services Region #1 .....		(417) 895-6456
<i>149 Park Central Sq., Rm. 819, Springfield 65806</i>		
Home and Community Services Region #2 .....		(573) 290-5211
<i>338 Broadway, Ste. 200, Cape Girardeau 63701</i>		
Home and Community Services Region #3 .....		(314) 340-3451
<i>815 Olive St., Gallery Ste. #10, St. Louis 63101</i>		
Home and Community Services Region #4 .....		(816) 387-2104
<i>525 Jules St., Rm. 319, St. Joseph 64501</i>		
<i>1410 Genessee, Ste. 130, Kansas City 64106</i>		
Home and Community Services Region #5 .....		(573) 884-6310
<i>1500 Vandiver Dr., Ste. 102, Columbia 65202</i>		



---

# Department of Higher Education

---

3515 Amazonas Dr., Jefferson City 65109  
[www.dhe.mo.gov](http://www.dhe.mo.gov)

The Missouri Coordinating Board for Higher Education (CBHE) was authorized by an amendment to the Missouri Constitution in 1972 and established by statute in the Omnibus State Reorganization Act of 1974. The nine members are appointed by the governor, confirmed by the Senate, and represent each Missouri congressional district. The board members serve six-year terms; no more than five of the nine members may be affiliated with the same political party. The CBHE's primary goals in statewide planning and coordination are to increase educational attainment, develop a 21st century society and global economy, and enhance resources through increased investment, stewardship and shared responsibility.

The department is the administrative arm of the CBHE. The functions of the department include statewide planning for post-secondary education, evaluation of student and institutional performance, identification of statewide needs for higher education, development of effective and economical specialization among institutions, submission of a unified budget request for public higher education to the governor and the Missouri General Assembly, review and enhancement of institutional missions, and approval of new degree programs offered at the public colleges and universities. In addition, the department administers a variety of student financial assistance programs, the proprietary school certification program, and the State Anatomical Board.

The board employs a commissioner of higher education to carry out its goals and administrative responsibilities. The state system of higher education includes 13 public four-year universities, 21 public two-year campuses, 1 public two-year technical college, 25 independent colleges and universities, and 159 proprietary schools.

---

## Coordinating Board for Higher Education

Chair	Kathryn Swan	Cape Girardeau
Vice Chair	Gregory Upchurch	St. Louis
Secretary	Doris Carter	Florissant
Member	Helen Washburn	Columbia
Member	David Cole	Cassville
Member	Lowell C. Kruse	St. Joseph
Member	Jeanne M. Patterson	Belton
Member	Mary Beth Luna-Wolf	St. Louis

## Administrative

3515 Amazonas Dr., Jefferson City 65109	FAX (573) 751-6635
Commissioner of Higher Education	Dr. Robert Stein (573) 751-2361
Executive Assistant	Laura Vedenhaupt (573) 751-1876
Deputy Commissioner	Paul Wagner (573) 751-1794
Public Information Officer	Kathryn Love (573) 522-1463
Assistant Commissioner for Academic Affairs	Dr. Tim Gallimore (573) 751-1764
Assistant Commissioner and Legal Counsel	Zora AuBuchon (573) 526-1577
Assistant Commissioner for Financial Assistance,	
Ourteach and Proprietary Certification	Leroy Wade (573) 751-1776
Assistant Commissioner, Loan Program	Leanne Cardwell (573) 522-2367

**Missouri State Anatomical Board**

- President . . . . . Dr. Margaret H. Cooper . . . . . (314) 977-8045  
*Center for Anatomical Science and Education, Department of Surgery*  
*St. Louis University School of Medicine*  
*1402 S. Grand., St. Louis 63104. E-mail: coopermg@slu.edu*
- Vice President . . . . . Dr. Pamela Thomas . . . . . (800) 234-4847  
*Kansas City University of Medicine and Bio-Sciences, College of Osteopathic Medicine*  
*1750 Independence Ave., Kansas City 64106. E-mail: pthomas@kcumb.edu*
- Secretary-Treasurer . . . . . Dr. Tom C. Scanlon . . . . . (573) 884-6599  
*Department of Pathology and Anatomical Sciences, University of Missouri–Columbia*  
*M263, Medical Science Building, Columbia 65212. E-mail: scanlont@health.missouri.edu*

**Public Institutions of Higher Education****University of Missouri System**

- President . . . . . Mr. Gary Forsee . . . . . (573) 882-2011  
 University of Missouri-Columbia . . . . . Dr. Brady Deaton . . . . . (573) 882-3387  
*105 Jesse Hall, Columbia 65211 . . . . . Chancellor*
- University of Missouri-Kansas City . . . . . Mr. Leo Morton . . . . . (816) 235-1101  
*5100 Rockhill Rd., Kansas City 64110 . . . . . Interim Chancellor*
- Missouri University of Science and Technology . . . . . Dr. John Carney . . . . . (573) 341-4116  
*206 Parker Hall, Rolla 65409-0470 . . . . . Chancellor*
- University of Missouri-St. Louis . . . . . Dr. Thomas George . . . . . (314) 516-5254  
*401 Woods Hall, St. Louis 63121 . . . . . Chancellor*

**Colleges and Universities**

- Harris-Stowe State University . . . . . Dr. Henry Givens Jr. . . . . (314) 340-3383  
*3026 Laclede Ave., St. Louis 63103 . . . . . President*
- Lincoln University . . . . . Dr. Carolyn Mahoney . . . . . (573) 681-5044  
*820 Chestnut, Jefferson City 65101 . . . . . President*
- Missouri Southern State University . . . . . Dr. Bruce Speck . . . . . (417) 625-9501  
*3950 E. Newman Rd., Joplin 64801-1595 . . . . . President*
- Missouri Western State University . . . . . Dr. Robert Vartabedian . . . . . (816) 271-4237  
*4525 Downs Dr., St. Joseph 64507-2294 . . . . . President*
- Northwest Missouri State University . . . . . Dr. Dean Hubbard . . . . . (660) 562-1110  
*800 University Dr., Maryville 64468-6001 . . . . . President*
- Southeast Missouri State University . . . . . Dr. Kenneth Dobbins . . . . . (573) 651-2222  
*One University Plaza, Cape Girardeau 63701 . . . . . President*
- Missouri State University . . . . . Dr. Michael T. Nietzel . . . . . (417) 836-8500  
*901 S. National Ave., Springfield 65804 . . . . . President*
- Missouri State University-West Plains . . . . . Dr. Drew Bennett . . . . . (417) 255-7900  
*128 Garfield, West Plains 65775 . . . . . Chancellor*
- Truman State University . . . . . Dr. Darrell Krueger . . . . . (660) 785-4101  
*100 E. Normal, Kirksville 63501-9980 . . . . . President*
- University of Central Missouri . . . . . Dr. Aaron M. Podolefsky . . . . . (660) 543-8112  
*Administration 202, Warrensburg 64093 . . . . . President*

**Community Colleges**

- Crowder College . . . . . Dr. Alan Marble . . . . . (417) 455-5534  
*601 Laclede Ave., Neosho 64850 . . . . . President*
- East Central College . . . . . Dr. Edward Jackson . . . . . (636) 583-5195  
*1964 Prairie Dell Rd., Union 63084 . . . . . President*
- Jefferson College . . . . . Dr. Wayne Watts . . . . . (636) 797-3951  
*1000 Viking Dr., Hillsboro 63050-1000 . . . . . President*
- Metropolitan Community Colleges . . . . . Dr. Jackie Snyder . . . . . (816) 759-1031  
*3200 Broadway, Kansas City 64111 . . . . . Chancellor*
- Blue River Community College . . . . . Dr. Joseph Seabrooks Jr. . . . . (816) 220-6544  
*20301 East 78 Hwy, Independence 64057 . . . . . President*

Business and Technology College . . . . .	Ms. Debbie Goodall . . . . .	(816) 482-5430
<i>1775 Universal Avenue, Kansas City 64120</i> . Interim President		
Longview Community College . . . . .	Dr. Fred Grogan . . . . .	(816) 672-2044
<i>500 S.W. Longview Rd., Lee's Summit 64081</i> . President		
Maple Woods Community College . . . . .	Dr. Merna Saliman . . . . .	(816) 437-3044
<i>2601 N.E. Barry Rd., Kansas City 64156-1299</i> . President		
Penn Valley Community College . . . . .	Dr. Bernard Franklin . . . . .	(816) 759-4201
<i>3201 Southwest Trafficway, Kansas City 64111</i> . President		
Mineral Area College . . . . .	Dr. Steven Kurtz . . . . .	(573) 518-2146
<i>5270 Flat River Rd., Park Hills 63601</i> . President		
Moberly Area Community College . . . . .	Dr. Evelyn Jorgenson . . . . .	(660) 263-4110
<i>101 College Ave., Moberly 65270</i> . President		
North Central Missouri College . . . . .	Dr. Neil Nuttall . . . . .	(660) 359-3948
<i>1301 Main St., Trenton 64683</i> . President		
Ozarks Technical Community College . . . . .	Dr. Hal L. Higdon . . . . .	(417) 447-2601
<i>1001 E. Chestnut Expressway, Springfield 65801</i> . President		
St. Charles Community College . . . . .	Dr. John McGuire . . . . .	(636) 922-8383
<i>4601 Mid Rivers Mall Dr., St. Peters 63376</i> . President		
St. Louis Community College . . . . .	Dr. Zelema Harris . . . . .	(314) 539-5150
<i>300 S. Broadway, St. Louis 63102</i> . Chancellor		
St. Louis Community College at Florissant Valley . . . . .	Dr. Marcia Pfeiffer . . . . .	(314) 595-4208
<i>3400 Pershall Rd., St. Louis 63135</i> . President		
St. Louis Community College at Forest Park . . . . .	Dr. Morris F. Johnson III . . . . .	(314) 644-9743
<i>5600 Oakland Ave., St. Louis 63110</i> . President		
St. Louis Community College at Meramec . . . . .	Dr. Paul Pai . . . . .	(314) 984-7763
<i>11333 Big Bend Rd., St. Louis 63122</i> . President		
St. Louis Community College at Wildwood . . . . .	Dr. Pam McIntyre . . . . .	(636) 422-2240
<i>2645 Generations Dr., Wildwood 63040</i> . President		
State Fair Community College . . . . .	Dr. Marsha Drennon . . . . .	(660) 530-5800
<i>3201 W. 16th St., Sedalia 65301-2199</i> . President		
Three Rivers Community College . . . . .	Mr. Joe Rozman . . . . .	(573) 840-9698
<i>2080 Three Rivers Blvd., Poplar Bluff 63901</i> . President		

### Two-year Technical College

Linn State Technical College . . . . .	Dr. Donald Claycomb . . . . .	(573) 897-5120
<i>One Technology Dr., Linn 65051</i> . President		

---

# Department of Insurance, Financial Institutions and Professional Registration

---

301 W. High, PO Box 690, Jefferson City 65102-0690  
 www.difp.mo.gov

The Department of Insurance, Financial Institutions & Professional Registration’s primary responsibility is to efficiently and effectively encourage a fair and open market for consumer services industries.

The department was created by executive order effective August 28, 2006. The Department has seven divisions.

The Consumer Affairs Division assists the public in resolving complaints, provides information on insurance policies, investigates insurance fraud and performs education and outreach activities.

The Insurance Solvency & Company Regulation Division monitors and analyzes the financial condition, accounting practices and legal compliance of insurance companies licensed in the state and certifies and collects premium taxes due the state.

The Insurance Market Regulation Division regulates the performance of insurance companies by reviewing policies, rates, products and marketing strategies and monitoring the insurance marketplace to ensure equitable treatment of policyholders.

The Division of Finance executes laws relating to banks, trust companies, savings and loans, consumer credit companies, credit services organizations and money order companies in Missouri to ensure the safety and soundness of financial institutions for Missouri consumers.

The Division of Credit Unions oversees the examination, supervision, chartering, merger and liquidation of credit unions and responds to consumer complaints about credit union services and operations.

The Division of Professional Registration supports 39 professional licensing boards for over 400,000 professional Missourians by processing applications, administering examinations and conducting investigations into possible professional misconduct.

The Resource Administration Division performs department-wide administrative support functions including accounting, budget and information systems coordination. It is also responsible for licensing insurance producers, public adjusters, bail bond agents and surplus lines brokers.

---

## Office of the Director

Director . . . . .	John Huff . . . . .	(573) 751-1927
Deputy Director . . . . .	Larry McCord . . . . .	(573) 751-1927
General Counsel . . . . .	Jim McAdams . . . . .	(573) 751-2619
Legislative Liaison . . . . .	Melissa Palmer . . . . .	(573) 526-3587
Communications Director . . . . .	Travis Ford . . . . .	(573) 751-2562

## Consumer Affairs Division

*Consumer Toll Free Hotline (800) 726-7390; TT (573) 526-4536*

Division Director . . . . .	Mary Kempker . . . . .	(573) 751-1923
Manager, Consumer Affairs . . . . .	Carol Harden . . . . .	(573) 751-8887

Manager, Investigations . . . . . Rita Heimericks-Ash . . . . . (573) 751-1922

### Division of Insurance Solvency and Company Regulation

Chief Examiner/Division Director . . . . . Frederick Heese . . . . . (573) 526-4877  
 Manager, Financial Analysis . . . . . Debbie Doggett . . . . . (573) 526-4912  
 Manager, Premium Tax . . . . . Lillian Hand . . . . . (573) 751-1929

### Division of Insurance Market Regulation

Division Director . . . . . (Vacancy) . . . . . (573) 751-2425  
 Manager, Market Conduct Examination . . . . . Mike Woolbright . . . . . (573) 751-2430  
 Manager, Life and Health . . . . . (Vacancy) . . . . . (573) 751-4363  
 Manager, Managed Care . . . . . Molly White . . . . . (573) 751-4363  
 Manager, Property and Casualty . . . . . Angela Nelson . . . . . (573) 751-3365

### Division of Finance

*Truman State Office Building, Rm. 630, PO Box 716, Jefferson City 65102*

Chair, State Banking Board . . . . . Glen (Brad) Williams . . . . . (573) 751-3242  
 Secretary, State Banking Board . . . . . Robert Robuck . . . . . (573) 751-3242  
 Commissioner . . . . . Rich Weaver . . . . . (573) 751-3242  
 Chair, Residential Mortgage Board . . . . . (Vacancy) . . . . . (573) 751-3242

### Division of Credit Unions

*Truman State Office Building, Rm. 720, Jefferson City 65102*

Director . . . . . Sandra K. Branson . . . . . (573) 751-3419

### Licensing Agencies

#### Division of Professional Registration

*3605 Missouri Blvd., PO Box 1335, Jefferson City 65102*

Director . . . . . Jane A. Rackers . . . . . (573) 751-1081  
 Director, Financial Services . . . . . Sherry Hess . . . . . (573) 526-3507  
 Director, Budget and Legislation . . . . . Connie Clarkston . . . . . (573) 526-6071  
 Director, Human Resources . . . . . Sandy Sebastian . . . . . (573) 526-3557

#### Missouri State Board of Accountancy

*3605 Missouri Blvd., PO Box 613, Jefferson City 65102*

President . . . . . Wayne V. Jean . . . . . (573) 751-0012  
 Executive Director . . . . . Pamela Ives Hill . . . . . (573) 751-0012

#### Missouri Board for Architects, Professional Engineers, Professional Land Surveyors and Landscape Architects

*3605 Missouri Blvd., PO Box 184, Jefferson City 65102*

Chair . . . . . (Vacancy) . . . . . (573) 751-0047  
 Executive Director . . . . . Judy Kempker . . . . . (573) 751-0047

#### Office of Athletics

*3605 Missouri Blvd., PO Box 1335, Jefferson City 65102*

Administrator . . . . . Tim Lueckenhoff . . . . . (573) 751-0243  
 Executive Director . . . . . Becky Dunn . . . . . (573) 751-0243

#### State Board of Chiropractic Examiners

*3605 Missouri Blvd., PO Box 672, Jefferson City 65102*

President . . . . . Homer Thompson, DC . . . . . (573) 751-2104  
 Executive Director . . . . . Loree Kessler . . . . . (573) 751-2104

#### Board of Private Investigator Examiners

*3605 Missouri Blvd., PO Box 1335, Jefferson City 65102*

President . . . . . Dwight McNiel . . . . . (573) 522-7744  
 Executive Director . . . . . Pamela Groose . . . . . (573) 522-7744

**State Committee for Social Workers***3605 Missouri Blvd., PO Box 1335, Jefferson City 65102*

Chair . . . . .	M. Jenise Comer . . . . .	(573) 751-0885
Executive Director . . . . .	Tom Reichard . . . . .	(573) 751-0885

**Board of Cosmetology and Barber Examiners***3605 Missouri Blvd., PO Box 1062, Jefferson City 65102*

President . . . . .	Cindy Bald . . . . .	(573) 751-1052
Executive Director . . . . .	Darla Fox . . . . .	(573) 751-1052

**Missouri Dental Board***3605 Missouri Blvd., PO Box 1367, Jefferson City 65102*

President . . . . .	Rolfe McCoy . . . . .	(573) 751-0040
Executive Director . . . . .	Brian Barnett . . . . .	(573) 751-0040

**State Board of Embalmers and Funeral Directors***3605 Missouri Blvd., PO Box 423, Jefferson City 65102*

Chair . . . . .	James Reinhard . . . . .	(573) 751-0813
Executive Director . . . . .	Becky Dunn . . . . .	(573) 751-0813

**Office of Endowed Care Cemeteries***3605 Missouri Blvd., PO Box 1335, Jefferson City 65102*

Chair . . . . .		(573) 751-0849
Administrator . . . . .	Tom Reichard . . . . .	(573) 751-0849

**State Board of Registration for the Healing Arts***3605 Missouri Blvd., PO Box 4, Jefferson City 65102*

President . . . . .	Jean Hausheer, MD . . . . .	(573) 751-0098
Executive Director . . . . .	Tina Steinman . . . . .	(573) 751-0098

**Board of Examiners for Hearing Instrument Specialists***3605 Missouri Blvd., PO Box 1335, Jefferson City 65102*

Chair . . . . .	Ervin Dock . . . . .	(573) 751-0240
Acting Executive Director . . . . .	Dana Hoelscher . . . . .	(573) 751-0240

**State Board of Nursing***3605 Missouri Blvd., PO Box 656, Jefferson City 65102*

President . . . . .	Charlotte York . . . . .	(573) 751-0681
Executive Director . . . . .	Lori Scheidt . . . . .	(573) 751-0681

**State Board of Optometry***3605 Missouri Blvd., PO Box 423, Jefferson City 65102*

President . . . . .	James Bureman, OD . . . . .	(573) 751-0814
Executive Director . . . . .	Brian Barnett . . . . .	(573) 751-0814

**State Board of Pharmacy***3605 Missouri Blvd., PO Box 625, Jefferson City 65102*

President . . . . .	James Riddle, R.Ph. . . . .	(573) 751-0091
Executive Director . . . . .	Kimberly Grinston . . . . .	(573) 751-0091

**Advisory Commission for Professional Physical Therapists***3605 Missouri Blvd., PO Box 4, Jefferson City 65102*

Chair . . . . .	Paula Burnett . . . . .	(573) 751-0098
Executive Director . . . . .	Tina Steinman . . . . .	(573) 751-0098

**State Board of Podiatric Medicine***3605 Missouri Blvd., PO Box 423, Jefferson City 65102*

President . . . . .	H. John Visser . . . . .	(573) 751-0873
Executive Director . . . . .	Becky Dunn . . . . .	(573) 751-0873

**Committee for Professional Counselors***3605 Missouri Blvd., PO Box 1335, Jefferson City 65102*

Chair . . . . .	Greg Roeback . . . . .	(573) 751-0018
Executive Director . . . . .	Loree Kessler . . . . .	(573) 751-0018

**Committee of Psychologists***3605 Missouri Blvd., PO Box 1335, Jefferson City 65102*

Chair . . . . .	George (Brick) Johnson . . . . .	(573) 751-0099
Executive Director . . . . .	Pam Groose . . . . .	(573) 751-0099

**Real Estate Appraisers' Commission***3605 Missouri Blvd., PO Box 1335, Jefferson City 65102*

Acting Chair . . . . .	Shawn Ordway . . . . .	(573) 751-0038
Executive Director . . . . .	Vanessa Beauchamp . . . . .	(573) 751-0038

**Missouri Real Estate Commission***3605 Missouri Blvd., PO Box 1339, Jefferson City 65102*

Chair . . . . .	Charles Davis . . . . .	(573) 751-2628
Executive Director . . . . .	Janet Carder . . . . .	(573) 751-2628

**Advisory Commission for Speech Pathologists and Clinical Audiologists***3605 Missouri Blvd., PO Box 4, Jefferson City 65102*

Commission Chair . . . . .	Larry Mazzeo . . . . .	(573) 751-0098
Executive Director . . . . .	Tina Steinman . . . . .	(573) 751-0098

**Missouri Veterinary Medical Board***3605 Missouri Blvd., PO Box 633, Jefferson City 65102*

Chair . . . . .	Charles Barry . . . . .	(573) 751-0031
Executive Director . . . . .	Dana Hoelscher . . . . .	(573) 751-0031

**State Committee for Marital and Family Therapists***3605 Missouri Blvd., PO Box 1335, Jefferson City 65102*

Chair . . . . .	Dr. Elizabeth Kingsley . . . . .	(573) 751-0870
Executive Director . . . . .	Loree Kessler . . . . .	(573) 751-0870

**State Committee of Interpreters***3605 Missouri Blvd., PO Box 1335, Jefferson City 65102*

Chair . . . . .	Kathleen Alexander . . . . .	(573) 526-7787
Executive Director . . . . .	Pam Groose . . . . .	(573) 526-7787

**Board of Geologist Registration***3605 Missouri Blvd., PO Box 1335, Jefferson City 65102*

Chair . . . . .	Guy Gilbert . . . . .	(573) 526-7625
Executive Director . . . . .	Pam Groose . . . . .	(573) 526-7625

**Missouri Board of Occupational Therapy***3605 Missouri Blvd., PO Box 1335, Jefferson City 65102*

Chair . . . . .	David Lackey . . . . .	(573) 751-0877
Executive Director . . . . .	Vanessa Beauchamp . . . . .	(573) 751-0877

**Missouri Board for Respiratory Care***3605 Missouri Blvd., PO Box 1335, Jefferson City 65102*

Chair . . . . .	Arlene Hogue . . . . .	(573) 522-5864
Executive Director . . . . .	Vanessa Beauchamp . . . . .	(573) 522-5864

**Interior Design Council***3605 Missouri Blvd., PO Box 1335, Jefferson City 65102*

Chair	Jeanine Bequette	(573) 522-4683
Executive Director	Tom Reichard	(573) 522-4683

**State Committee of Dietitians***3605 Missouri Blvd., PO Box 1335, Jefferson City 65102*

Chair	Lois Kramer-Owens	(573) 522-3438
Executive Director	Tom Reichard	(573) 522-3438

**Advisory Commission for Massage Therapists***3605 Missouri Blvd., PO Box 1335, Jefferson City 65102*

Chair	Kevin Snedden	(573) 522-6277
Executive Director	Loree Kessler	(573) 522-6277

**Missouri Acupuncturist Advisory Committee***3605 Missouri Blvd., PO Box 1335, Jefferson City 65102*

Chair	Jane Van Sant	(573) 526-1555
Executive Director	Loree Kessler	(573) 526-1555

**Office of Tattooing, Branding and Body Piercing***3605 Missouri Blvd., PO Box 1335, Jefferson City 65102*

Executive Director	Vanessa Beauchamp	(573) 526-8288
--------------------	-------------------	----------------

**Athletic Trainer Advisory Committee***3605 Missouri Blvd., PO Box 4, Jefferson City 65102*

Chair	Robin Meeks	(573) 751-0098
Executive Director	Tina Steinman	(573) 751-0098

**Advisory Commission for Clinical Perfusionists***3605 Missouri Blvd., PO Box 4, Jefferson City 65102*

Chair	Michael Phillips	(573) 751-0098
Executive Director	Tina Steinman	(573) 751-0098

**Advisory Commission for Registered Physician Assistants***3605 Missouri Blvd., PO Box 4, Jefferson City 65102*

Chair	Christina Bruning, PA	(573) 751-0098
Executive Director	Tina Steinman	(573) 751-0098

**Advisory Commission for Dental Hygienists***3605 Missouri Blvd., PO Box 1367, Jefferson City 65102*

Chair	Tia Strait, RDH	(573) 751-0040
Executive Director	Brian Barnett	(573) 751-0040

**State Office of Athletic Agents***3605 Missouri Blvd., PO Box 1335, Jefferson City 65102*

Executive Director	Tim Lueckenhoff	(573) 751-0243
--------------------	-----------------	----------------

**Missouri Advisory Commission for Anesthesiologist Assistants***3605 Missouri Blvd., PO Box 4, Jefferson City 65102*

Chair	James Kelly Jr, MD	(573) 751-0098
Executive Director	Tina Steinman	(573) 751-0098

**Resource Administration Division**

Division Director	Rochelle Hendrickson	(573) 751-1927
Manager, Human Resources	Keith Dudenhoeffer	(573) 751-6798
Manager, Support Services	Shirley Gerling	(573) 751-1942
Budget Officer	Grady Martin	(573) 751-7223
Manager, Licensing	Matt Barton	(573) 751-3518
Manager, Information Systems	Tim Dwyer	(573) 751-1952



---

# Department of Labor and Industrial Relations

---

421 E. Dunklin St., Jefferson City 65102-0504, (573) 751-4091, FAX: (573) 751-4135  
www.dolir.mo.gov

The Missouri Department of Labor and Industrial Relations is responsible for administering programs that: provide an income for workers to offset the loss of a job due to an injury or layoff; conduct employee representation elections for public bodies; regulate minimum wage and wages for public works and construction projects; promote safe working environments; enforce Missouri's anti-discrimination statutes and protect Missouri citizens in the areas of housing, employment and public accommodations.

Agencies operating within the department are: Labor and Industrial Relations Commission; State Board of Mediation; Division of Employment Security; Division of Workers' Compensation; Division of Labor Standards; and Missouri Commission on Human Rights.

The Labor Commission consists of three members, appointed by the governor and confirmed by the Senate. As part of their duties, the commission hears appeals from all decisions and awards in workers' compensation and unemployment compensation, makes determinations in prevailing wage and victims of crime compensation cases, and determines an appropriate bargaining unit of public employees.

The director of the Department of Labor and Industrial Relations is nominated by the commission and appointed by the governor, subject to the advice and consent of the Senate, to be the chief administrative officer of the department.

---

## Labor and Industrial Relations Commission

3315 W. Truman Blvd., PO Box 599, Jefferson City 65102-0599

Chair . . . . . William F. Ringer . . . . . (573) 751-2461  
Commissioner (Employee representative) . . . . . John J. Hickey . . . . . (573) 751-2461  
Commissioner (Employer representative) . . . . . Alice A. Bartlett . . . . . (573) 751-2461

## Office of the Director

421 E. Dunklin St., PO Box 504, Jefferson City 65102-0504

Director . . . . . Lawrence Rebman . . . . . (573) 751-9691  
Deputy Director . . . . . Peter Lyskowski . . . . . (573) 751-9691

## Division of Employment Security

421 E. Dunklin St., PO Box 59, Jefferson City 65104-0059

Director . . . . . Gracia Backer . . . . . (573) 751-3215

## Division of Labor Standards

3315 W. Truman Blvd., PO Box 449, Jefferson City 65102-0449

Director . . . . . Carla Buschjost . . . . . (573) 751-3403

## Division of Workers' Compensation

3315 W. Truman Blvd., PO Box 58, Jefferson City 65102-0058

Acting Director . . . . . Peter Lyskowski . . . . . (573) 751-4231

## Missouri Commission on Human Rights

3315 W. Truman Blvd., PO Box 1129, Jefferson City 65102-1129

Executive Director . . . . . Alisa Warren . . . . . (573) 751-3325

## State Board of Mediation

3315 W. Truman Blvd., PO Box 2071, Jefferson City 65102-2071

Chair . . . . . Jim Avery . . . . . (573) 751-3614

# Department of Mental Health

1706 E. Elm St., PO Box 687, Jefferson City 65102  
www.dmh.mo.gov

The Department of Mental Health was established as a cabinet-level state agency by the Omnibus State Reorganization Act of 1974.

The department’s mission as specified by law is: to prevent mental disorders, developmental disabilities and substance abuse; to treat, habilitate and rehabilitate Missourians who suffer from those conditions; and to improve public understanding and attitudes about mental disorders, developmental disabilities and substance abuse.

The principal policy advisor to the department is the seven-member Mental Health Commission, a citizen commission that appoints the director with the confirmation of the Senate. The director is responsible for overall operations of the department, its three operating divisions, support offices, facilities and central office.

## Mental Health Commission

Chair . . . . .	Beth Viviano . . . . .	St. Louis
Member . . . . .	Patricia Bolster, MD . . . . .	St. Louis
Member . . . . .	Kathy Carter . . . . .	Four Seasons
Member . . . . .	David Vlach, MD . . . . .	Kansas City
Member . . . . .	Joann Leykem . . . . .	St. Charles

## Administrative

1706 E. Elm St., PO Box 687, Jefferson City 65102  
(573) 751-4122, (800) 364-9687, FAX (573) 526-8224, TT (573) 526-1201

Director . . . . .	Keith Schafer . . . . .	(573) 751-3070
Deputy Director . . . . .	Lynn Carter . . . . .	(573) 526-3691
Assistant to the Director . . . . .	Monica Hoy . . . . .	(573) 751-6686
Administrative Assistant . . . . .	Cathy Welch . . . . .	(573) 751-4970
Deputy Director, Administration . . . . .	Jan Heckemeyer . . . . .	(573) 751-8144
Director, Human Resources . . . . .	Patrick Murphy . . . . .	(573) 751-8562
Director, Public & Legislative Affairs . . . . .	Bob Bax . . . . .	(573) 751-4423
Director, Investigations . . . . .	Patty Pratt . . . . .	(573) 751-8049
Director, Information Systems . . . . .	Virginia Rowe-Pearson . . . . .	(573) 751-9121
Director, Psychiatry/Medical Director . . . . .	Joseph Parks, MD . . . . .	(573) 751-2794
Legislative Liaison . . . . .	Zach Pollock . . . . .	(573) 751-8033
General Counsel . . . . .	Rikki Wright . . . . .	(573) 751-8091
Director, Consumer Affairs . . . . .	Leigh Gibson . . . . .	(573) 751-8093

## Division of Alcohol and Drug Abuse

(573) 751-4942, FAX (573) 751-7814, TT (573) 751-4942

Director . . . . .	Mark Stringer . . . . .	(573) 751-9499
Deputy Division Director . . . . .	Debbie McBaine . . . . .	(573) 751-4942
Deputy Division Director of Administration . . . . .	Laurie Epple . . . . .	(573) 751-4942

## Missouri Advisory Council on Alcohol and Drug Abuse

Chair . . . . .	Robin Hammond . . . . .	(816) 232-0050
625 Francis, St. Joseph 64501		
Co-Chair . . . . .	Diana Harris . . . . .	(417) 782-6700
3829 South Duquesne, Joplin 64804		

**Division of Comprehensive Psychiatric Services***(573) 751-8017, FAX (573) 751-7815, TT (573) 751-8017*

Director . . . . .	Joseph Parks, MD . . . . .	(573) 751-2794
Chief Operating Officer . . . . .	Felix Vincenz, PhD . . . . .	(573) 751-9482
Director, Administration and Quality Management . . . . .	Steve Reeves . . . . .	(573) 522-1324
Director, Forensic Services . . . . .	Richard Gowdy, Ph.D. . . . .	(573) 751-9647

**Hospital Systems****Central Area***600 E. Fifth St., Fulton 65251*

Regional Executive Officer . . . . .	Bob Reitz, Ph.D. . . . .	(573) 592-3412
Administrative Assistant . . . . .	Ceri Stevens . . . . .	(573) 592-3412

**Fulton State Hospital***600 E. Fifth St., Fulton 65251, TT (573) 592-3498*

Chief Operating Officer . . . . .	Marty Martin . . . . .	(573) 592-4100
Administrative Assistant . . . . .	Rickie Gohring . . . . .	(573) 592-4100
Chief Financial Officer . . . . .	Ken Lyle . . . . .	(573) 592-4100
Medical Director . . . . .	Bruce Harry, MD . . . . .	(573) 592-4100
Human Resource Manager . . . . .	Lori Hollinger . . . . .	(573) 592-4100
Quality Improvement Office . . . . .	Andy Atkinson . . . . .	(573) 592-4100

**Mid-Missouri Mental Health Center***#3 Hospital Dr., Columbia 65201, TT (573) 884-1213*

Chief Operating Officer . . . . .	Marla Smith . . . . .	(573) 884-1300
Administrative Assistant . . . . .	Rona Biele . . . . .	(573) 884-1300
Chief Financial Officer . . . . .	Ken Lyle . . . . .	(573) 592-4100
Medical Director . . . . .	Ron Lacey, MD . . . . .	(573) 884-1300
Human Resource Manager . . . . .	Lori Hollinger . . . . .	(573) 592-4100
Quality Improvement Officer . . . . .	Andy Atkinson . . . . .	(573) 592-4100

**Southwest Missouri Psychiatric Rehabilitation Center***1301 Industrial Parkway E., El Dorado Springs 64744, TT (417) 876-2604*

Chief Operating Officer . . . . .	Denise Norbury . . . . .	(417) 876-1002
Administrative Assistant . . . . .	Connie Esry . . . . .	(417) 876-1002
Chief Financial Officer . . . . .	Randy Riley . . . . .	(816) 387-2300
Medical Director . . . . .	Jhansirani Vasireddy, MD . . . . .	(417) 876-1002
Human Resource Manager . . . . .	Jim Stacy . . . . .	(417) 876-1007
Quality Improvement Officer . . . . .	Terri Villafane . . . . .	(417) 876-1007

**Eastern Area***5300 Arsenal St., St. Louis 63139*

Chief Executive Officer . . . . .	Laurent Javois . . . . .	(314) 877-5981
Administrative Assistant . . . . .	Kathy Moehrle . . . . .	(314) 877-5981

**St. Louis Psychiatric Rehabilitation Center***5300 Arsenal St., St. Louis 63139, TT (314) 877-6503*

Regional Operating Officer . . . . .	Curt Trager . . . . .	(314) 877-6500
Administrative Assistant . . . . .	Roena Whitt . . . . .	(314) 877-6500
Chief Financial Officer . . . . .	Jim Martin . . . . .	(314) 877-6500
Medical Director . . . . .	Roy Wilson, MD . . . . .	(314) 877-6500
Human Resource Manager . . . . .	Donna Harris . . . . .	(314) 877-6500
Quality Improvement Officer . . . . .	Cary Drennen . . . . .	(314) 877-6500

**Metropolitan St. Louis Psychiatric Center***5351 Delmar, St. Louis 63112, TT (314) 877-0775*

Chief Operating Officer . . . . .	Anthony Cuneo . . . . .	(314) 877-0500
Administrative Assistant . . . . .	Colette Strickland . . . . .	(314) 877-0500
Chief Financial Officer . . . . .	Jim Martin . . . . .	(314) 877-0500
Medical Director . . . . .	Dan Loiterstein, MD . . . . .	(314) 877-0500
Human Resource Manager . . . . .	Donna Harris . . . . .	(314) 877-6500
Quality Improvement Officer . . . . .	Cary Drennen . . . . .	(314) 877-6500

**Hawthorn Children's Psychiatric Hospital***1901 Pennsylvania Ave., St. Louis 63133, TT (314) 512-7800*

Chief Operating Officer . . . . .	Marcia Perry . . . . .	(314) 512-7800
Administrative Assistant . . . . .	Carolyn Huntington . . . . .	(314) 512-7800
Chief Financial Officer . . . . .	Jim Martin . . . . .	(314) 877-6500
Medical Director . . . . .	Syed Tahir Rizvi, MD . . . . .	(314) 512-7800
Human Resource Manager . . . . .	Donna Harris . . . . .	(314) 877-6500
Quality Improvement Officer . . . . .	Cary Drennen . . . . .	(314) 877-6500

**Southern Area***1010 W. Columbia, Farmington 63640*

Regional Executive Officer . . . . .	Karen Adams . . . . .	(573) 218-6792
Administrative Assistant . . . . .	Jennifer Street . . . . .	(573) 218-6792

**Southeast Missouri Mental Health Center***1010 W. Columbia, Farmington 63640, TT (573) 218-7018*

Chief Operating Officer . . . . .	Melissa Ring, Ph.D. . . . .	(573) 218-6792
Administrative Assistant . . . . .	Cindy Forsythe . . . . .	(573) 218-6792
Chief Financial Officer . . . . .	Julie Inman . . . . .	(573) 218-6792
Medical Director . . . . .	Jay Englehart, MD . . . . .	(573) 218-6792
Human Resource Manager . . . . .	Mark Remspecher . . . . .	(573) 218-6792
Quality Improvement Officer . . . . .	Dave Schmitt . . . . .	(573) 218-6792

**Missouri Sexual Offender Treatment Center***1016 W. Columbia, Farmington 63640*

Chief Operating Officer . . . . .	Alan Blake . . . . .	(573) 218-7045
Administrative Assistant . . . . .	Sheila Light . . . . .	(573) 218-7045
Chief Financial Officer . . . . .	Julie Inman . . . . .	(573) 218-6792
Medical Director . . . . .	(Vacancy)	
Clinical Director . . . . .	Marty Bellew-Smith, MD . . . . .	(573) 218-7045
Human Resource Manager . . . . .	Mark Remspecher . . . . .	(573) 218-6792
Quality Improvement Officer . . . . .	Dave Schmitt . . . . .	(573) 218-6792

**Cottonwood Residential Treatment Center***1025 N. Sprigg St., Cape Girardeau 63701*

Chief Operating Officer . . . . .	Martha Cassel . . . . .	(573) 290-5888
Chief Financial Officer . . . . .	Julie Inman . . . . .	(573) 218-6792
Human Resource Manager . . . . .	Mark Remspecher . . . . .	(573) 218-6792
Quality Improvement Officer . . . . .	Dave Schmitt . . . . .	(573) 218-6792

**Western Area***1000 E. 24th St., Kansas City 64108*

Regional Executive Officer . . . . .	Dick Gregory, Ph.D. . . . .	(816) 512-7510
Administrative Assistant . . . . .	Janet Manns . . . . .	(816) 512-7510

**Northwest Missouri Psychiatric Rehabilitation Center***3505 Frederick St., St. Joseph 64506, (816) 387-2595*

Chief Operating Officer	Mary Attebury	(816) 387-2300
Administrative Assistant	Diane Hargrave	(816) 387-2300
Chief Financial Officer	Randy Riley	(816) 387-2300
Medical Director	James Reynold, MD	(816) 387-2300
Human Resource Manager	Silva Ward	(816) 512-7000
Quality Improvement Officer	Kaye Green	(816) 512-7509

**Western Missouri Mental Health Center***1000 E. 24th St., Kansas City 64108, TT (800) 955-8339*

Chief Operating Officer	Scott Carter	(816) 512-7000
Administrative Assistant	Barbara Johnson	(816) 512-7000
Chief Financial Officer	Randy Riley	(816) 387-2300
Medical Director	Larry Carver, MD	(816) 512-7000
Human Resource Manager	Silva Ward	(816) 512-7000
Quality Improvement Officer	Kaye Green	(816) 512-7000

**Missouri Advisory Council on Comprehensive Psychiatric Services**

Chair	Helen Minth	(314) 652-6100
<i>3024 Locust, St. Louis 63103</i>		
Vice Chair	Karren Jones	(573) 636-7727
<i>3405 W. Truman Blvd., Jefferson City 65109</i>		

**Division of Mental Retardation and Developmental Disabilities***(573) 751-4054, FAX (573) 751-9207, TT (573) 751-8217*

Director	Bernard Simons	(573) 751-8676
Deputy Division Director	Tec Chapman	(573) 751-8667
Deputy Division Director Administrative Services	Jeff Grosvenor	(573) 751-8678

**Missouri Planning Council for Developmental Disabilities***PO Box 687, Jefferson City 65102*

Chair	Terry Mack	(573) 751-8611
Director	Susan Pritchard-Green	(573) 751-8611

**Habilitation Centers****Higginsville Habilitation Center***100 W. First St., PO Box 517, Higginsville 64037, FAX (660) 584-6244*

Superintendent	April Maxwell	(660) 584-4800
Administrative Assistant	Sherry Kilpatrick	(660) 584-4824
Assistant Superintendent (Administration)	Sherry Meyer	(660) 584-4800

**Marshall Habilitation Center***Slater St., PO Box 190, Marshall 65340, FAX (660) 831-3071*

Superintendent	Mary Fangmann	(660) 886-2202
Administrative Assistant/Secretary	Marlene Van Horn	(660) 886-2202
Administrative Assistant/Secretary	Liz Elson	(660) 886-2202
Assistant Superintendent (Habilitation)	(Vacancy)	(660) 886-2202

**Bellefontaine Habilitation Center***10695 Bellefontaine Rd., St. Louis 63137, FAX (314) 340-6199, TT (314) 340-6000*

Superintendent	Becky Post	(314) 340-6032
Administrative Assistant/Secretary	Sharon Payne	(314) 340-6011
Business Manager	Laura Wayer	(314) 340-6065
Assistant Superintendent (Habilitation)	Marey Hargis	(314) 340-6031

**Nevada Habilitation Center**

2323 N. Ash, Nevada 64772, FAX (417) 448-1138

Superintendent	Chris Baker	(417) 448-1124
Administrative Assistant/Secretary	Bobbie Dade	(417) 448-1124
Assistant Superintendent (Administration)	Pat Moomaw	(417) 448-1150
Assistant Superintendent (Habilitation)	(Vacancy)	(417) 448-1150

**Southeast Missouri Residential Services**

2351 Kanoll Blvd., Poplar Bluff 63901, FAX-PB (573) 840-9373, FAX-SIKE (573) 472-6588

Superintendent	Anita Burnett (Poplar Bluff)	(573) 840-9370
Superintendent	Anita Burnett (Sikeston)	(573) 472-5305
Administrative Assistant/Secretary	Skye Murray (Poplar Bluff)	(573) 840-9375
Administrative Assistant/Secretary	Rhonda Smith (Sikeston)	(573) 472-6559

**St. Louis Developmental Disabilities Treatment Center**

211 N. Lindbergh, St. Louis 63141-7809, FAX (314) 340-6724

Superintendent	Chad Rollins	(314) 340-6701
Administrative Assistant/Secretary	Mindy Boehringer	(314) 340-6701
Assistant Superintendent (Administration)	Wanda Elliot	(314) 340-6715
Assistant Superintendent (Habilitation)	(Vacancy)	(314) 340-6714

**Northwest Habilitation Center**

11 Brady Circle, St. Louis 63114, FAX (314) 877-5660

Unit Manager	Chad Rollins	(314) 877-5650
--------------	--------------	----------------

**St. Charles Habilitation Center**

22 Marr Ln., St. Charles 63104, FAX (636) 926-1309

Unit Manager	Mary Watts	(636) 926-1300
--------------	------------	----------------

**South County Habilitation Center**

2312 Lemay Ferry Rd., St. Louis 63125, (314) 894-5440

Unit Manager	Sandra Olsen	(314) 894-5400
--------------	--------------	----------------

**Regional Centers****Albany Regional Center**

809 N. 13th, Albany 64402, FAX (660) 726-5165

Director	Gary Davis	(660) 726-5246
Administrative Assistant/Secretary	Connie Nail	(660) 726-1528
Assistant Director (Habilitation)	Jodi Manville	(660) 726-1526

**Central Missouri Regional Center**

1500 Vandiver Drive, Ste. 100, Columbia 65202, FAX (573) 884-4294

Director	Lisa Turner	(573) 882-9835
Administrative Assistant/Secretary	Karen Alexander	(573) 882-9835
Assistant Director (Habilitation)	Sharon Price	(573) 882-9835

**Hannibal Regional Center**

805 Clinic Rd., PO Box 1108, Hannibal 63401, FAX (573) 248-2408

Director	Lois Warren	(573) 248-2400
Administrative Assistant	Mary Shirley	(573) 248-2400
Assistant Director (Habilitation)	Tena Gottman	(573) 248-2400

**Joplin Regional Center**

3600 E. Newman Rd., PO Box 1209, Joplin 64802-1209, FAX (417) 629-3026

Director	Matt Ferguson	(417) 629-3020
Administrative Assistant/Secretary	Cathy Seely	(417) 629-3020
Assistant Director (Administration)	Doris Obradovich	(417) 629-3020
Assistant Director (Habilitation)	Penny Moorehouse-Coates	(417) 629-3020

**Kansas City Regional Center***821 E. Admiral Blvd., PO Box 412557, Kansas City 64106, FAX (816) 889-3325*

Director	Jerry Carpenter	(816) 889-3420
Administrative Assistant/Secretary	Patty Colling	(816) 889-3420
Assistant Director (Administration)	Linda Weisbach	(816) 889-3419
Assistant Director (Habilitation)	Anita Hartman	(816) 889-3484

**Kirksville Regional Center***1702 E. LaHarpe St., Kirksville 63501, FAX (660) 785-2520*

Director	Linda Bowers	(660) 785-2500
Administrative Assistant/Secretary	Debbie Lee	(660) 785-2500
Assistant Director (Habilitation)	Deb Wohlers	(660) 785-2500

**Poplar Bluff Regional Center***PO Box 460, Poplar Bluff 63902, FAX (573) 840-9311*

Director	Kim Crites	(573) 840-9300
Administrative Assistant/Secretary	Doris Brandon	(573) 840-9300
Assistant Director (Administration)	Debbie Crocker	(573) 840-9300

**Rolla Regional Center***105 Fairgrounds Rd., PO Box 1098, Rolla 65402, FAX (573) 368-2206*

Director	Marcy Volner	(573) 368-2200
Administrative Assistant/Secretary	Nancy Fields	(573) 368-2200
Assistant Director (Habilitation)	Randy Havens	(573) 368-2200

**Sikeston Regional Center***112 Plaza Dr., PO Box 966, Sikeston 63801, FAX (573) 472-5308*

Director	Terry Regenold	(573) 472-5300
Administrative Assistant/Secretary	Pat Jones	(573) 472-5300
Assistant Director (Administration)	Debbie Crocker	(573) 472-5300
Assistant Director (Habilitation)	Susan Von Doersten	(573) 472-5300

**Springfield Regional Center***1515 E. Pythian, PO Box 5030, Springfield 65801-5030, FAX (417) 895-7412*

Director	Kathleen Featherstone	(417) 895-7400
Administrative Assistant/Secretary	LaDonna Morris	(417) 895-7400
Assistant Director (Administration)	Doris Obradovich	(417) 895-7400
Assistant Director (Habilitation)	Becky Dodds	(417) 895-7400

**St. Louis Regional Center–North***211 N. Lindbergh, St. Louis 63141, FAX (314) 340-6666*

Director	Suellen White	(314) 340-6500
Administrative Assistant/Secretary	Naomi Lebsock	(314) 340-6500
Business Manager	Barb Vineyard	(314) 340-6500

**St. Louis Regional Center–South***Wainwright Bldg., 111 N. Seventh St., Sixth Fl., St. Louis 63101, FAX (314) 244-8804*

Executive Director	Cindy Mueller	(314) 244-8800
Administrative Assistant/Secretary	Teresa Demis	(314) 244-8800
Business Manager	Barbara Vineyard	(314) 244-8800

---

# Department of Natural Resources

---

1101 Riverside Dr., PO Box 176, Jefferson City 65102  
[www.dnr.mo.gov](http://www.dnr.mo.gov)

The mission of the Department of Natural Resources is to preserve, protect and enhance Missouri's natural, cultural and energy resources. The department ensures that Missourians enjoy clean air to breathe, clean water for drinking and recreation, land that sustains a diversity of life and sustainable energy choices. The agency accomplishes this work through the Division of Environmental Quality, the Division of Geology and Land Survey, the Division of State Parks and the Field Services Division. The department's Division of Administrative Support provides department-level administrative and management support.

The Department of Natural Resources was created in 1974. The department is managed by a director who is directly responsible to the governor.

---

Director . . . . .	Mark N. Templeton . . . . .	(573) 522-6221
Deputy Director . . . . .	Joseph P. Bindbeutel . . . . .	(573) 522-6221
Policy Director and Legislative Affairs . . . . .	(Vacancy) . . . . .	(573) 751-3195
Chief of Water Resources . . . . .	Mike Wells . . . . .	(573) 751-4732
General Counsel . . . . .	Joseph P. Bindbeutel . . . . .	(573) 522-6221

## Energy Center

1101 Riverside Dr., PO Box 176, Jefferson City 65102

Director . . . . .	Anita Randolph . . . . .	(573) 751-2254
--------------------	--------------------------	----------------

## Soil and Water Conservation Program

1101 Riverside Dr., PO Box 176, Jefferson City 65102

Acting Director . . . . .	Bill Wilson . . . . .	(573) 751-4932
---------------------------	-----------------------	----------------

## Soil and Water Districts Commission

1101 Riverside Dr., PO Box 176, Jefferson City 65102

Chair, <i>Bethany</i> . . . . .	Leon Kreisler . . . . .	(573) 751-4932
Vice Chair, <i>Memphis</i> . . . . .	Richard Fordyce . . . . .	(573) 751-4932
Acting Staff Director . . . . .	Bill Wilson . . . . .	(573) 751-4932

## Water Resources Center

1101 Riverside Dr., PO Box 176, Jefferson City 65102

Director . . . . .	Ryan Mueller . . . . .	(573) 751-2867
--------------------	------------------------	----------------

## Dam and Reservoir Safety Council

111 Fairgrounds Rd., PO Box 250, Rolla 65401

Chair, <i>St. Louis</i> . . . . .	Richard Frueh . . . . .	(573) 368-2175
Vice Chair, <i>Bonne Terre</i> . . . . .	Ron Fox . . . . .	(573) 368-2175
Acting Staff Director . . . . .	Bob Clay . . . . .	(573) 368-2175

## Administrative Support

1101 Riverside Dr., PO Box 176, Jefferson City 65102

Director . . . . .	LaVerne Brondel . . . . .	(573) 751-7961
--------------------	---------------------------	----------------

## Environmental Improvement and Energy Resources Authority

325 Jefferson St., PO Box 744, Jefferson City 65102

Chair . . . . .	(Vacancy) . . . . .	(573) 751-4919
Vice Chair . . . . .	Ryan Doyle . . . . .	(573) 751-4919
Director . . . . .	Thomas Welch . . . . .	(573) 751-4919



**Minority Environmental Literacy Advisory Committee***1101 Riverside Dr., PO Box 176, Jefferson City 65102*

Chair	Mark N. Templeton	(573) 526-6221
Staff Contact	Lori Hogue	(573) 751-8317

**Petroleum Storage Tank Insurance Fund Board***830 E. High St., Ste. B, PO Box 836, Jefferson City 65102*

Chair	Don McNutt	(573) 522-2352
Vice Chair	James Ford	(573) 522-2352
Executive Director	Carol Eighmey	(573) 522-2352

**Division of Environmental Quality***1101 Riverside Dr., PO Box 176, Jefferson City 65102*

Director	Dan Schuette	(573) 751-0763
Deputy Director	Earl Pabst	(573) 751-0763
Deputy Director	Leanne Tippett Mosby	(573) 751-0763

**Air Conservation Commission***1659 E. Elm, PO Box 176, Jefferson City 65102*

Chair, <i>Springfield</i>	Gary Pendergrass	(573) 526-4679
Vice Chair, <i>Graham</i>	Kevin Rosenbohm	(573) 526-4679
Staff Director	Jim Kavanaugh	(573) 526-4679

**Clean Water Commission***1101 Riverside Dr., PO Box 176, Jefferson City 65102*

Chair, <i>Bowling Green</i>	Kristin Perry	(573) 751-6721
Vice Chair, <i>Owensville</i>	Ron Hardske	(573) 751-6721
Acting Staff Director	Earl Pabst	(573) 751-6721

**Hazardous Waste Management Commission***1738 E. Elm, PO Box 176, Jefferson City 65102*

Chair, <i>Webster Groves</i>	Patrick Gleason	(573) 751-2747
Vice Chair, <i>Wildwood</i>	Tim Warren	(573) 751-2747
Staff Director	Robert Geller	(573) 751-2747

**Land Reclamation Commission***1101 Riverside Dr., PO Box 176, Jefferson City 65102*

Chair, <i>St. James</i>	James DiPardo	(573) 751-4041
Co-Chair, <i>Maryville</i>	Gregory Haddock, Ph.D	(573) 751-4041
Acting Staff Director	Leanne Tippet Mosby	(573) 751-4041

**Safe Drinking Water Commission***1101 Riverside Dr., PO Box 176, Jefferson City 65102*

Staff Contact	Steve Sturgess	(573) 751-5331
---------------	----------------	----------------

**Small Business Compliance Advisory Committee***1659 E. Elm, PO Box 176, Jefferson City 65102*

Chair, <i>Jackson</i>	T. Robin Cole	(573) 751-4817
Vice Chair, <i>Kansas City</i>	Gale Holsman	(573) 751-4817
Staff Contact	Lucy Thompson	(573) 751-4817

**Solid Waste Advisory Board***1738 E. Elm, PO Box 176, Jefferson City 65102*

Chair, <i>Springfield</i>	Tim Smith	(573) 526-3900
Vice Chair, <i>Branson</i>	Larry Van Gilder	(573) 526-3900
Staff Contact	Leanne Tippet Mosby	(573) 526-3900

**Well Installation Board***1101 Riverside Dr., PO Box 176, Jefferson City 65102*

Chair, <i>Steele</i> .....	Robert Lawrence.....	(573) 751-5331
Vice Chair, <i>Buffalo</i> .....	Fred Schoen.....	(573) 751-5331
Staff Contact.....	Steve Sturgess.....	(573) 751-5331

**Division of Geology and Land Survey***111 Fairgrounds Rd., PO Box 250, Rolla 65401*

Director and State Geologist.....	Joe Gillman.....	(573) 368-2101
Deputy Director.....	Bill Duley.....	(573) 368-2101

**Land Survey Advisory Committee***111 Fairgrounds Rd., PO Box 250, Rolla 65401*

Chair, <i>Hermann</i> .....	Paul Dopuch, PLS.....	(573) 368-2300
Staff Director.....	Darrell Pratte.....	(573) 368-2300

**State Oil and Gas Council***111 Fairgrounds Rd., PO Box 250, Rolla 65401*

Chair, <i>Rolla</i> .....	Dr. Shari Dunn-Norman.....	(573) 368-2149
Vice Chair, <i>Jefferson City</i> .....	Kevin Mohammadi.....	(573) 751-1740
Staff Contact.....	Joe Gillman.....	(573) 368-2149

**Division of State Parks***1659 E. Elm, PO Box 176, Jefferson City 65102*

Director.....	Doug Eiken.....	(573) 751-9392
Deputy Director.....	Wynonna McClammer.....	(573) 751-9392
Deputy Director.....	Dan Paige.....	(573) 522-5655

**Missouri Advisory Council on Historic Preservation***1101 Riverside Dr., PO Box 176, Jefferson City 65102*

Chair, <i>Kansas City</i> .....	Dr. Robert Wieggers.....	(573) 751-7858
Vice Chair, <i>Fayette</i> .....	Allen Shirley.....	(573) 751-7858
Staff Director.....	Mark Miles.....	(573) 751-7858

**Missouri State Park Advisory Board**

Chair, <i>Webster Groves</i> .....	Max Nall.....	(573) 751-9392
Vice Chair, <i>Springfield</i> .....	Jerry Hollingsworth.....	(573) 751-9392

**State Inter-Agency Council for Outdoor Recreation***1101 Riverside Dr., PO Box 176, Jefferson City 65102*

Chair.....	Mark N. Templeton.....	(573) 751-4732
------------	------------------------	----------------

**Unmarked Human Burial Consultation Committee***1101 Riverside Dr., PO Box 176, Jefferson City 65102*

Chair.....	Mark Miles.....	(573) 751-4732
------------	-----------------	----------------

**Industrial Minerals Advisory Council***111 Fairgrounds Rd., PO Box 250, Rolla 65401*

Chair, <i>Rolla</i> .....	Joe Gillman.....	(573) 368-2101
---------------------------	------------------	----------------

**Field Services Division***1101 Riverside Dr., PO Box 176, Jefferson City 65102*

Director.....	(Vacancy).....	(573) 526-5804
Deputy Director.....	(Vacancy).....	(573) 526-5804
Deputy Director.....	(Vacancy).....	(573) 526-5804

---

# Department of Public Safety

---

*Truman State Office Building, PO Box 749, Jefferson City 65102-0749, FAX (573) 751-5399  
www.dps.mo.gov*

The Department of Public Safety is responsible for coordinating all elements of law enforcement, criminal investigation and public safety activities undertaken by state government, the ultimate goal being to ensure the safety and security of Missouri's citizens and their property. This is accomplished through the activities of the Missouri Veterans' Commission; Division of Alcohol and Tobacco Control; Missouri State Water Patrol; Division of Fire Safety; Missouri State Highway Patrol; Missouri Capitol Police; Missouri Gaming Commission; Office of the Adjutant General (Missouri National Guard); and the State Emergency Management Agency.

Established by the Omnibus State Reorganization Act of 1974, the department consisted of a small central staff and seven divisions which reported directly to the governor. Since then, significant changes have occurred. The department is now responsible for 3,600 employees and a budget of more than \$200 million.

The department is under the supervision of a director, appointed by the governor with the advice and consent of the Senate.

---

Director . . . . .	John M. Britt . . . . .	(573) 751-5432
Executive Secretary . . . . .	Margaret Bilyeu . . . . .	(573) 751-5432
Deputy Director . . . . .	Andrea Spillars . . . . .	(573) 751-5432
General Counsel . . . . .	Michael Bradley . . . . .	(573) 751-5432
Homeland Security . . . . .	Paul Fennewald . . . . .	(573) 522-3007
Narcotics Control . . . . .	Eric Shepherd . . . . .	(573) 751-4905
Juvenile Justice . . . . .	Sandy Remppe . . . . .	(573) 751-4905
Victims' Services . . . . .	Marc Peoples . . . . .	(573) 751-4905
Victims of Crime . . . . .	Marc Peoples . . . . .	(573) 751-4905
Peace Officer Training . . . . .	Jeremy Spratt . . . . .	(573) 751-4905
Budget . . . . .	Tom Orf . . . . .	(573) 751-4905
Personnel . . . . .	Mary Beckwith . . . . .	(573) 751-4905
Legislation . . . . .	James Klahr . . . . .	(573) 751-4905
Communications . . . . .	Mike O'Connell . . . . .	(573) 751-5432

## Missouri Veterans' Commission

*205 Jefferson St., PO Drawer 147, Jefferson City 65102-0147, FAX (573) 751-6836*

Executive Director . . . . .	Larry D. Kay . . . . .	(573) 751-3779
Executive Secretary . . . . .	Jill Talken . . . . .	(573) 522-1422
Deputy Director . . . . .	Bryan Hunt . . . . .	(573) 522-1402
Superintendent of Homes . . . . .	Anne Payne . . . . .	(573) 522-1409
Director, Service to Veterans . . . . .	Stan Baughn . . . . .	(573) 522-1411

## Missouri Veterans' Homes

Administrator, St. James Veterans' Home . . . . .	Patty Faenger . . . . .	(573) 265-3271
<i>620 N. Jefferson, St. James 65559-1999</i>		
Administrator, Mt. Vernon Veterans' Home . . . . .	Don Long . . . . .	(417) 466-7103
<i>600 N. Main, Mt. Vernon 65712-1098</i>		
Administrator, Mexico Veterans' Home . . . . .	Cheryl Tolbert . . . . .	(573) 581-1088
<i>#1 Veterans' Dr., Mexico 65265-0473</i>		

Administrator, Cape Girardeau Veterans' Home . . . Viviane Rains . . . . .	(573) 290-5870
<i>2400 Veterans' Memorial Dr., Cape Girardeau 63701</i>	
Administrator, St. Louis Veterans' Home . . . . . Jan Rau . . . . .	(314) 340-6389
<i>10600 Lewis &amp; Clark Blvd., St. Louis 63136</i>	
Administrator, Cameron Veterans' Home . . . . . Celia Reed. . . . .	(816) 632-6010
<i>1111 Euclid, Cameron 64429</i>	
Administrator, Warrensburg Veterans' Home. . . . . Eric Endsley. . . . .	(660) 543-5064
<i>1300 Veterans' Rd., Warrensburg 64093</i>	

### Missouri Veterans' Cemeteries

Acting Director, Springfield State Veterans' Cemetery. . . Steve Maples. . . . .	(417) 823-3944
<i>5201 S. Southwood Dr., Springfield 65804</i>	
Director, Higginsville State Veterans' Cemetery. . . Jess Rasmussen . . . . .	(660) 584-5252
<i>20109 Business Hwy. 13, Higginsville 64037</i>	
Director, Bloomfield State Veterans' Cemetery . . . Ken Swearingin . . . . .	(573) 568-3871
<i>17357 Stars &amp; Stripes Way, Bloomfield 63825-0566</i>	
Director, Jacksonville State Veterans' Cemetery. . . Jerry Quigley. . . . .	(660) 295-4237
<i>1479 County Rd. 1675, Jacksonville 65260</i>	

### Division of Alcohol and Tobacco Control

*Truman State Office Bldg., PO Box 837, Jefferson City 65102-0837, FAX (573) 526-4540*

State Supervisor . . . . . Gene Lacy. . . . .	(573) 751-4092
Deputy State Supervisor . . . . . Mike Schler. . . . .	(573) 751-4092
Administrative Assistant. . . . . Kristy Westrich . . . . .	(573) 751-4092
Chief of Enforcement. . . . . Steve Shimmens . . . . .	(573) 751-2333
Administrative Services Manager . . . . . Karen Gaut . . . . .	(573) 751-2333
Fiscal and Administrative Manager . . . . . Diane Markway. . . . .	(573) 751-2333
Tobacco Program Manager . . . . . Vanessa Mure . . . . .	(573) 751-2333

#### District Offices:

I . . . . . Joe Hodgins . . . . .	(816) 889-2574
<i>Fletcher Daniels State Office Bldg., 615 E. 13th St., Rm. 506, Kansas City 64106</i>	
II . . . . . Steve Shimmens . . . . .	(573) 751-2964
<i>Truman State Office Bldg., Rm. 860, PO Box 837, Jefferson City 65102-0837</i>	
III . . . . . Richard Weiser . . . . .	(314) 340-6835
<i>Wainwright State Office Bldg., 111 N. Seventh, St. Louis 63101-2134</i>	

### Missouri State Water Patrol

*2401 E. McCarty, PO Box 1368, Jefferson City 65102-1368*

Commissioner . . . . . (Vacancy) . . . . .	(573) 751-3333
Assistant Commissioner . . . . . Ltc. Michael Smith . . . . .	(573) 751-3333
Commander, Administrative Services . . . . . Maj. Tommy Roam . . . . .	(573) 751-3333
Commander, Field Services . . . . . Maj. Joseph Hughes . . . . .	(573) 751-3333
Commander, Technical Services . . . . . Capt. Hans Huenink . . . . .	(573) 751-3333
Director, Criminal Investigations . . . . . Sgt. Jay Pragman . . . . .	(573) 751-3333
Commander, Personnel . . . . . Capt. Paul Kennedy. . . . .	(573) 751-3333
Commander, Support Services. . . . . Capt. Mark Richerson . . . . .	(573) 751-3333
Director, Safety Education . . . . . Cpl. John Sellers . . . . .	(573) 751-3333
Director, Public Information . . . . . Sgt. Jerry Callahan. . . . .	(573) 751-3333
Director, Communications . . . . . Becky Haskamp . . . . .	(573) 751-3333
Fiscal Director. . . . . Darla Otto. . . . .	(573) 751-3333
Commander, Training . . . . . Lt. Eldon Wulf. . . . .	(573) 751-3333
Manager, CALEA Accreditation . . . . . Sgt. Alan Barborek. . . . .	(573) 751-3333

#### Districts:

I (West Central Missouri) . . . . . Capt. James E. Marlin . . . . .	(573) 751-3333
II (Central Missouri) . . . . . Capt. Matt Walz . . . . .	(573) 751-3333
III (Southwest Missouri) . . . . . Capt. Gary T. Haupt . . . . .	(417) 335-6081
IV (Southeast Missouri) . . . . . Capt. Robert Searey. . . . .	(573) 751-3333

V (Northeast Missouri) . . . . .	Capt. Dale G. Sluhan . . . . .	(573) 751-3333
VI (Northwest Missouri) . . . . .	Capt. William E. Cox . . . . .	(816) 525-9657

### Missouri Capitol Police

301 W. High St., PO Box 36, Jefferson City 65102-0036, FAX (573) 526-3898

Police Chief . . . . .	Todd Hurt . . . . .	(573) 751-2764
Operations . . . . .	Capt. Paul Minze . . . . .	(573) 751-2764
Protective Services . . . . .	Lt. Dan Hoerschgen . . . . .	(573) 751-4141
Executive Assistant . . . . .	MaryAnn Craig . . . . .	(573) 526-6028
Support Services . . . . .	Lt. Eric Clemons . . . . .	(573) 526-5330
Emergency/Police Services . . . . .	(Vacancy) . . . . .	(573) 522-2222

### Missouri State Highway Patrol

1510 E. Elm St., PO Box 568, Jefferson City 65102-0568, FAX (573) 751-9419

Superintendent . . . . .	Col. James Keathley . . . . .	(573) 751-2901
Assistant Superintendent . . . . .	Lt. Col. Richard Coffey . . . . .	(573) 526-6130
Chief of Staff . . . . .	Capt. Tim McDonald . . . . .	(573) 522-9816
Administrative Services Bureau . . . . .	Maj. H.E. McKay . . . . .	(573) 526-6110
Criminal Investigation Bureau . . . . .	Maj. Ron Replogle . . . . .	(573) 526-6230
Field Operations Bureau . . . . .	Maj. A.D. Penn . . . . .	(573) 751-2892
Support Services Bureau . . . . .	Maj. J. Bret Johnson . . . . .	(573) 526-6150
Technical Services Bureau . . . . .	Maj. Bob Bloomberg . . . . .	(573) 526-6140

#### Troops:

A . . . . .	Capt. R.L. Powell . . . . .	(816) 622-0800
Lee's Summit 64063-0158 . . . . .	FAX (816) 622-0715	
B . . . . .	Capt. J.W. Elliott . . . . .	(660) 385-2132
Macon 63552-1030 . . . . .	FAX (660) 385-3920	
C . . . . .	Capt. Ron Johnson . . . . .	(636) 300-2800
St. Louis 63141-8550 . . . . .	FAX (636) 300-2741	
D . . . . .	Capt. J.O. Villanueva . . . . .	(417) 895-6868
Springfield 65803-5044 . . . . .	FAX (417) 895-6877	
E . . . . .	Capt. G.E. Ridens . . . . .	(573) 840-9500
Poplar Bluff 63901-8718 . . . . .	FAX (573) 840-9509	
F . . . . .	Capt. D.A. Schmidt . . . . .	(573) 751-1000
Jefferson City 65102-0568 . . . . .	FAX (573) 751-6814	
G . . . . .	Capt. B.E. Chadwick . . . . .	(417) 469-3121
Willow Springs 65793-0010 . . . . .	FAX (417) 469-3105	
H . . . . .	Capt. D.L. Robinson . . . . .	(816) 387-2345
St. Joseph 64508-8580 . . . . .	FAX (816) 387-2349	
I . . . . .	Capt. L.A. Kenley . . . . .	(573) 368-2345
Rolla 65401-0128 . . . . .	FAX (573) 368-2352	

### Division of Fire Safety

PO Box 844, Jefferson City 65102, FAX (573) 751-1744

State Fire Marshal . . . . .	Randy L. Cole . . . . .	(573) 751-1742
Assistant State Fire Marshal . . . . .	Greg Carrell . . . . .	(573) 751-1743
Fiscal Administrative Manager . . . . .	Sherry Hoelscher . . . . .	(573) 526-1007
Personnel Analyst I . . . . .	Donna Moore . . . . .	(573) 751-1746
Deputy Chief Boiler & Pressure Vessel Program . . . . .	Gary Scribner . . . . .	(573) 751-8708
Deputy Chief Fire Inspection Program . . . . .	Kevin Notz . . . . .	(573) 522-1624
Deputy Chief Fire Investigation & Explosives Program . . . . .	Bill Zieres . . . . .	(573) 751-2701
Deputy Chief Training & Certification Program . . . . .	Kim Becker . . . . .	(573) 751-5301
Deputy Chief Elevator & Amusement Ride Safety Programs . . . . .	(Vacancy) . . . . .	(573) 751-5299

**Office of Adjutant General**

*Missouri National Guard, Ike Skelton Training Site, 2302 Militia Drive, Jefferson City, 65101-1203*

Adjutant General of Missouri . . . . .	BG Stephen L. Danner . . . . .	(573) 638-9710
Administrative Assistant . . . . .	Gail A. Schrimpf . . . . .	(573) 638-9711
Military Executive . . . . .		(573) 638-9623
Chief of Staff . . . . .	COL Wendul G. Hagler . . . . .	(573) 638-9616
Deputy Military Executive . . . . .	LTC (Ret.) Dennis Cruets . . . . .	(573) 638-9630
Director of State Resources . . . . .	Jill Delgado . . . . .	(573) 638-9754
State Personnel Manager . . . . .	Donna Truman . . . . .	(573) 638-9845
Public Affairs . . . . .	CPT Tammy Spicer . . . . .	(573) 638-9846
Facilities Management . . . . .	LTC Brent Beckley . . . . .	(573) 638-9750
Deputy Facilities Management . . . . .	Paul Junkans . . . . .	(573) 638-9553
Military Records and Archives . . . . .	Robert Ortmeyer . . . . .	(573) 638-9890

**State Emergency Management Agency**

*The Missouri Army National Guard Training Center, PO Box 116, Jefferson City 65102, (573) 526-9100*

Director . . . . .	Paul Parmenter . . . . .	(573) 526-9101
Deputy Director . . . . .	Tim Diemler . . . . .	(573) 526-9143
Operations . . . . .	John H. Campbell . . . . .	(573) 526-9103
Planning/Disaster Recovery . . . . .	Chuck May . . . . .	(573) 526-9112
Fiscal . . . . .	Tracy Farris . . . . .	(573) 526-9106
Floodplain Management/Mitigation . . . . .	Randy Schrivner . . . . .	(573) 526-9141

**Missouri Gaming Commission**

*3417 Knipp Dr., PO Box 1847, Jefferson City 65102, Telephone: (573) 526-4080, FAX (573) 526-1999*

Executive Director . . . . .	Gene McNary . . . . .	(573) 526-4083
Chief Deputy Director, Enforcement . . . . .	Roger Stottlemire . . . . .	(573) 526-2329
Deputy Director, Administration . . . . .	Alden Henrickson . . . . .	(573) 526-4094
Chief Counsel . . . . .	Christopher Hinckley . . . . .	(573) 526-4082

**Satellite Offices**

<i>St. Louis, 11775 Borman Dr., Ste. 104, St. Louis 63146 . . . . .</i>	<i>(314) 340-4400</i>
<i>Kansas City, 1321 Burlington St., Ste. 100, North Kansas City 64116 . . . . .</i>	<i>(816) 482-5700</i>

---

# Department of Revenue

---

*PO Box 311, Sixth Fl., Truman State Office Building, Jefferson City 65105-0311*  
*www.dor.mo.gov*

The Department of Revenue is one of the largest and most comprehensive of Missouri's state departments. As established in Article IV of the state constitution, the department collects state and local taxes and administers the state's motor vehicle and driver licensing laws, including the titling and registration of motor vehicles and the licensing of Missouri drivers.

The director, appointed by the governor and confirmed by the Senate, is responsible for all operations and policies of the department.

The department is comprised of four divisions: Administration, Legal Services, Taxation and Motor Vehicle & Driver Licensing. The Administration Division is responsible for human resources and other internal department issues. The other divisions are contacted more frequently by Missouri citizens and elected officials, and those divisions' detailed phone numbers are listed below. The goal of all department employees, no matter which division they work in, is to provide competent administration of Missouri's revenues.

---

Director . . . . .	Karen King Mitchell . . . . .	(573) 751-5671
Deputy Director/General Counsel . . . . .	Alana Barragan-Scott . . . . .	(573) 751-2992
Acting Director, Division of Administration . . . . .	Kim Lauer . . . . .	(573) 751-4373
Director, Division of Legal Services . . . . .	Alana Barragan-Scott . . . . .	(573) 751-2992
Director, Division of Taxation . . . . .	Kip Stetzler . . . . .	(573) 526-1824
Director, Division of Motor Vehicle & Driver Licensing . . . . .	Jackie Bemboom . . . . .	(573) 526-1827
Director of Communications . . . . .	Ted Farnen . . . . .	(573) 751-8222
Legislative Liaison . . . . .	Chris Pieper . . . . .	(573) 751-2110

## Legal Services

*PO Box 475, Jefferson City 65105-0475*

Bankruptcy Attorneys . . . . .	(573) 751-5531
Criminal Investigations . . . . .	(573) 751-4689
Individual/Corporate Income Tax Attorneys . . . . .	(573) 751-0961
Motor Vehicle/Driver License Attorneys . . . . .	(573) 751-2580
Personnel/Contracts/Criminal Investigations Attorneys . . . . .	(573) 751-9568
Sales/Use Tax Attorneys . . . . .	(573) 751-0961

## Taxation

*PO Box 854, Jefferson City 65105-0854*

Business Registration . . . . .	(573) 751-5860
Cigarette Tax . . . . .	(573) 751-7163
Corporate Income Tax . . . . .	(573) 751-4541
County Taxes/Fees . . . . .	(573) 751-5900
Delinquent Tax/Balance Due (Sales/Withholding/Corporate) . . . . .	(573) 751-7200
Delinquent Tax/Balance Due (Motor Vehicle Sales Tax) . . . . .	(573) 751-3535
Discovery/Federal Match . . . . .	(573) 751-7200
Electronic Filing . . . . .	(573) 751-8150
Estate Tax . . . . .	(573) 751-1467
Financial Institution Tax . . . . .	(573) 751-2326
Forms . . . . .	(800) 877-6881
Forms by Fax . . . . .	(573) 751-4800
Franchise Tax . . . . .	(573) 751-4541

Fuel Tax . . . . .	(573) 751-2611
Homestead Preservation Tax Credit . . . . .	(573) 751-3505
Individual Income Tax . . . . .	(573) 751-3505
Insurance Premium Tax . . . . .	(573) 751-2326
Local Taxes . . . . .	(573) 751-4876
Motor Vehicle Refunds . . . . .	(573) 751-4792
Nexus . . . . .	(573) 522-4989
Other Tobacco Products . . . . .	(573) 751-5772
Partnership/Fiduciary . . . . .	(573) 751-1467
Property Tax Credit . . . . .	(573) 751-3505
Refunds (Individual Income Tax) . . . . .	(573) 751-3505
Refunds (Sales/Use Tax) . . . . .	(573) 526-9938
Refunds (Withholding Tax) . . . . .	(573) 751-3505
Sales/Use Tax . . . . .	(573) 751-2836
Tax Clearance/No Tax Due . . . . .	(573) 751-9268
Telefile . . . . .	(573) 751-8150
Tire Fee . . . . .	(573) 751-2836
Transient Employers . . . . .	(573) 751-0459
Voluntary Compliance . . . . .	(573) 751-8612
Withholding Tax . . . . .	(573) 751-7200

### Motor Vehicle and Driver Licensing

*PO Box 629, Jefferson City 65105-0629*

Abandoned Vehicles . . . . .	(573) 526-3669
ATV Decals . . . . .	(573) 526-3669
Dealer Complaints . . . . .	(800) 887-3994
Dealer Registration/License . . . . .	(573) 751-8343
Disabled Placards/Plates . . . . .	(573) 526-3669
Driver License Issuance . . . . .	(573) 751-1887
Driver License Reinstatement . . . . .	(573) 751-1887
Driver License Suspension/Revocations . . . . .	(573) 751-1887
Driver Improvement Programs . . . . .	(573) 751-1887
Drivers Privacy Protection Act . . . . .	(573) 751-4300
Identification Card (Non-driver license) . . . . .	(573) 751-1887
License Plate Renewal Requirements . . . . .	(573) 526-3669
License Offices . . . . .	(573) 751-7205
Missouri Online Registration Exchange (Online Renewals) . . . . .	(573) 526-3669
Notice of Lien . . . . .	(573) 526-3669
Online Personal Property Tax System . . . . .	(573) 751-3180
Sales Tax (Motor Vehicle) . . . . .	(573) 526-3669
School Bus Endorsements . . . . .	(573) 751-1887
Specialty/Personalized License Plates . . . . .	(573) 526-3669
Substance Abuse Traffic Offender Program (SATOP) . . . . .	(573) 751-1887
Temporary Tags/Permits . . . . .	(573) 526-3669
Titles (Duplicate/Salvage/Junk/Repossession) . . . . .	(573) 526-3669

### State Tax Commission

*PO Box 146, Jefferson City 65102-0146*

Chair . . . . .	Bruce E. Davis . . . . .	(573) 751-2414
Member . . . . .	Jennifer Tidwell . . . . .	(573) 751-2414
Member . . . . .	Charles F. Nordwald . . . . .	(573) 751-2414

### Lottery Commission

*PO Box 1603, Jefferson City 65102*

Executive Director . . . . .	Larry Jansen . . . . .	(573) 751-4050
Director of Communications . . . . .	Gary Gonder . . . . .	(573) 751-4050
Director of Marketing . . . . .	Adam Hall . . . . .	(573) 751-4050
Director of Security . . . . .	Bob Gartner . . . . .	(573) 751-4050
Chief Financial Officer . . . . .	Michael Lauf . . . . .	(573) 751-4050



Headquarters  
    1823 Southridge Dr., Jefferson City 65102 . . . . . (573) 751-4050  
Kansas City Regional Office  
    3630 Arrowhead Ave., Independence 64057 . . . . . (816) 795-8811  
St. Louis Regional Office  
    1831 Craig Park Ct., St. Louis 63146 . . . . . (314) 340-5800  
Springfield Regional Office  
    1506 E. Raynell, Springfield 65804 . . . . . (417) 888-4227

# Department of Social Services

*Broadway State Office Bldg., PO Box 1527, Jefferson City 65102-1527*  
*www.dss.mo.gov*

The Missouri Department of Social Services was constitutionally established in 1974 because “the health and general welfare of the people are matters of primary public concern.” The department is charged with administering programs to promote, safeguard, and protect the general welfare of children; to maintain and strengthen family life; and to aid people in need as they strive to achieve their highest level of independence.

The department is organized into four program divisions: Children’s Division, Family Support Division, Division of Medical Services, and the Division of Youth Services. The Divisions of Budget & Finance, Legal Services, and General Services provide department-wide administrative and support services.

The department cooperates and partners with many private organizations, businesses and individuals to extend the outreach of human services to Missouri citizens.

Director . . . . .	Ronald J. Levy . . . . .	(573) 751-4815
Deputy Director . . . . .	Brian Kinkade . . . . .	(573) 751-4815
Associate Director . . . . .	James W. Uffmann . . . . .	(573) 751-4815
Director, State Technical Assistance Team (STAT) . . . . .	Rodney Jones . . . . .	(573) 751-5980
Legislative Liaison . . . . .	Sarah Madden . . . . .	(573) 751-4815
Legislative Liaison . . . . .	Damion Trasada . . . . .	(573) 751-4815

## Division of Finance and Administrative Services

*Broadway State Office Bldg., PO Box 1082, Jefferson City 65102-1082*

Director . . . . .	Jennifer R. Tidball . . . . .	(573) 751-7533
Deputy Director, Budget and Planning . . . . .	Donna Imhoff . . . . .	(573) 751-2171
Deputy Director, Grants Management . . . . .	Roger Backes . . . . .	(573) 751-2170
Deputy Director, Operations . . . . .	Theresa McDonald . . . . .	(573) 751-7533
Deputy Director, Administrative Services . . . . .	Gina Jacobs . . . . .	(573) 751-7533

## Division of Legal Services

*Broadway State Office Bldg., PO Box 1527, Jefferson City 65102-1527*

Director . . . . .	Joel Anderson . . . . .	(573) 751-1334
Special Counsel for Administrative Affairs . . . . .	Scotty Allen . . . . .	(573) 526-0414
Special Counsel for Litigation . . . . .	Mark Gutchen . . . . .	(573) 751-3229
Deputy Director, Investigations . . . . .	Larry Dickerson . . . . .	(573) 751-0803
Special Counsel, Administrative Hearings . . . . .	Gina Boxberger . . . . .	(573) 526-5240

## Children’s Division

*615 Howerton Ct., PO Box 88, Jefferson City 65103-0088*

Director . . . . .	Paula Neese . . . . .	(573) 526-6009
Designated Principal Assistant . . . . .	Celesta Hartgraves . . . . .	(573) 526-6009
Acting Deputy Director, Early Childhood and Prevention . . . . .	Becky Houf . . . . .	(573) 751-6793
Acting Deputy Director, Planning & Performance Management . . . . .	Susan Savage . . . . .	(573) 751-2502
Deputy Director, Practice & Professional Development . . . . .	(Vacancy) . . . . .	(573) 751-2427

## Northern Region

Regional Director . . . . .	Marta Halter . . . . .	(573) 592-4090
-----------------------------	------------------------	----------------

*106 N. Hospital Dr., PO Box 607, Fulton 65251-0607*

**Southern Region**

Regional Director . . . . . Julie Lester . . . . . (573) 346-3363  
*146 Rodeo Rd., Camdenton 65020*

**Jackson County**

Regional Director . . . . . Virginia Lewis-Brunk . . . . . (816) 889-2815  
*Fletcher Daniels State Office Bldg., 615 E. 13th St., Kansas City 64106*

**St. Louis City**

Regional Director . . . . . Tena Thompson . . . . . (314) 340-7007  
*Wainwright State Office Bldg., 111 N. Seventh St., St. Louis 63101*

**St. Louis County**

Acting Regional Director . . . . . Susan Shelton . . . . . (314) 426-8402  
*9900 Page Ave., St. Louis 63132*

**Family Support Division**

*615 Howerton Ct., PO Box 2320, Jefferson City 65103-2320*

Acting Director . . . . . Valerie Davis . . . . . (573) 751-4247

Deputy Director, IM Program and Policy . . . . . Sharon Denney . . . . . (573) 751-3124

Designated Principal Assistant,

Financial Management/Services . . . . . Shari Allen . . . . . (573) 751-4206

Designated Principal Assistant,

Personnel . . . . . Corrine Beakley . . . . . (573) 751-5253

Designated Principal Assistant, Rehabilitation

Services for the Blind . . . . . Mark Laird . . . . . (573) 751-4249

Designated Principal Assistant,

IM Field Operations . . . . . (Vacancy) . . . . . (314) 877-2189

Designated Principal Assistant,

Child Support Field Operations . . . . . Alyson Campbell . . . . . (573) 522-2135

Acting Deputy Director, Child Support Program

& Policy . . . . . Terri Hinzpeter . . . . . (573) 526-3716

**NW/NE Region** (IM Field Liaison) . . . . . Jim Simmons . . . . . (660) 543-5000

*505-B N. Ridgeview, PO Box 576, Warrensburg 64093*

**SE Region** (IM Field Liaison) . . . . . Darrell Deken . . . . . (573) 840-9260

*1003 Wildwood Dr., Ste. E, Dexter 63841*

**SW Region** (IM Field Liaison) . . . . . Debra Jones . . . . . (417) 745-6491

*1721 W. Elfindale, Ste. 205, Springfield 65807*

**Kansas City Region** (IM Field Liaison) . . . . . Marge Randle . . . . . (816) 889-2500

*615 E. 13th St., Kansas City 64106*

**St. Louis Region** (IM Field Liaison) . . . . . Sandra Nelson . . . . . (314) 933-7340

*3101 Chouteau, St. Louis 63103-2926*

**Kansas City Region** Child Support Field Liaison . . . . . Jeanine Zumalt . . . . . (816) 889-5191

*301 E. Armour Blvd., Fifth Fl., Kansas City 64111*

**St. Louis Region** Child Support Field Liaison . . . . . Jim Carney . . . . . (314) 416-2100

*7545 S. Lindbergh, Ste. 150, St. Louis 63125*

**MO Healthnet Division**

*615 Howerton Ct. PO Box 6500, Jefferson City 65102*

Director . . . . . Ian McCaslin . . . . . (573) 751-6922

Deputy Director, Operations . . . . . Judith Muck . . . . . (573) 751-6922

Deputy Director, Clinical Services . . . . . George Oestreich . . . . . (573) 751-6961

Director, Finance . . . . . Donna Siebeneck . . . . . (573) 751-1092

Deputy Director, Finance . . . . . Marga Hoelscher . . . . . (573) 751-1092

Director, Information Services . . . . . Debbie Kolb . . . . . (573) 751-7996

Director, Pharmacy . . . . . Rhonda Driver . . . . . (573) 751-6961

Director, Psychology Program . . . . . Lisa Clements . . . . . (573) 751-6961

Director, Program Integrity/Cost Recovery . . . . . (Vacancy) . . . . . (573) 751-3399

Director, Program Management . . . . . (Vacancy) . . . . . (573) 751-6926

Legal Counsel . . . . . (Vacancy) . . . . . (573) 751-6922

**Division of Youth Services**

*3418 Knipp, Ste. A-1, PO Box 447, Jefferson City 65102-0447*

Director . . . . .	Tim Decker . . . . .	(573) 751-3324
Designated Principal Assistant . . . . .	Bill Heberle . . . . .	(573) 751-3324
Deputy Director . . . . .	Tom Breedlove . . . . .	(573) 751-3324
Deputy Director . . . . .	Courtney Collier . . . . .	(816) 759-4662
Regional Administrator, Northeast Region . . . . .	Larry Strecker . . . . .	(573) 449-2939
<i>1240 E. Brownschool Rd., Columbia 65202</i>		
Regional Administrator, Northwest Region . . . . .	Juliet Breaux . . . . .	(816) 889-3850
<i>1910 Genessee, Kansas City 64102</i>		
Regional Administrator, St. Louis Region . . . . .	Lew Mueller . . . . .	(314) 340-6904
<i>Wainwright State Office Bldg., 111 N. Seventh St., Rm. 221, St. Louis 63101</i>		
Regional Administrator, Southeast Region . . . . .	Paula Shaw . . . . .	(573) 840-9540
<i>1903 Northwood, Poplar Bluff 63901</i>		
Regional Administrator, Southwest Region . . . . .	John Creson . . . . .	(417) 895-6485
<i>1735 W. Catalpa, Ste. B, Springfield 65807</i>		

**Division of Youth Services Advisory Board**

Chair . . . . .	Dennis Kehm . . . . .	(636) 797-5420
<i>1328 Melvin, Festus 63028</i>		
Vice Chair . . . . .	Thelma Neff . . . . .	(417) 866-3198
<i>802 N. Fairfax, Springfield 65802</i>		

---

# Department of Transportation

---

*Department of Transportation Office Building, 105 W. Capitol Ave., Jefferson City 65102  
(573) 751-2551, FAX: (573) 751-6555, E-mail: mail@modot.mo.gov  
www.modot.gov*

The Department of Transportation is responsible for the five viable transportation alternatives available to Missourians: highways, aviation, waterways, transit and railroads. Those responsibilities include operation of the 33,000-mile highway system, including highway location, design, construction and maintenance.

The Missouri Highways and Transportation Commission, composed of six members, is the governing body of the department. The members are appointed by the governor, with the consent of the Senate.

The director and secretary are appointed by the commission. All other appointments are made by the director, with approval of the commission.

---

## State Highways and Transportation Commission

Chair . . . . .	Mike Kehoe . . . . .	(573) 634-4444
<i>807 Southwest Blvd., Jefferson City 65109</i>		
Vice Chair . . . . .	David Gach . . . . .	(816) 232-4542
<i>4702 S. 169 Hwy., St. Joseph 64507</i>		
Member . . . . .	Duane S. Michie . . . . .	(573) 333-1700, ext. 230
<i>100 W. Third St., Caruthersville 63830</i>		
Member . . . . .	Rudolph E. Farber . . . . .	(417) 451-1040
<i>PO Box 400, 100 S. Wood St., Neosho 64850</i>		
Member . . . . .	Grace M. Nichols . . . . .	(636) 947-6399
<i>1 Prairie Haute Dr., St. Charles 63301</i>		
Member . . . . .	Lloyd J. Carmichael . . . . .	(417) 864-8000
<i>901 St. Louis, Ste. 101, Springfield 65803</i>		
Secretary to Commission . . . . .	Pam Harlan . . . . .	(573) 751-3704

## Transportation Officials

### Director's Management Team

Director . . . . .	Pete Rahn . . . . .	(573) 751-4622
Chief Engineer . . . . .	Kevin Keith . . . . .	(573) 751-2803
Chief Financial Officer . . . . .	Roberta Broecker . . . . .	(573) 751-2803
Chief Counsel . . . . .	Rich Tiemeyer . . . . .	(573) 751-7454

### Organizational Support Team

Director of Audits & Investigations . . . . .	Bill Rogers . . . . .	(573) 751-7446
Director of Community Relations . . . . .	Shane Peck . . . . .	(573) 751-1375
Director of Governmental Relations . . . . .	Jay Wunderlich . . . . .	(573) 522-9284
Director of Organizational Results . . . . .	Mara Campbell . . . . .	(573) 526-4335

### System Delivery Team

Multimodal Operations . . . . .	Brian Weiler . . . . .	(573) 526-2169
Aviation . . . . .	Joe Pestka . . . . .	(573) 526-2169
Railroads . . . . .	Rod Massman . . . . .	(573) 526-2169
Transit . . . . .	Steve Billings . . . . .	(573) 526-2169
Freight Development . . . . .	Ernie Perry . . . . .	(573) 526-5578
Waterways . . . . .	Sherrie Martin . . . . .	(573) 751-8620

Director of Program Delivery . . . . .	Dave Nichols . . . . .	(573) 751-0760
State Bridge Engineer . . . . .	Dennis Heckman . . . . .	(573) 751-4676
State Construction & Materials Engineer . . . . .	Dave Ahlvers . . . . .	(573) 751-3689
External Civil Rights Administrator . . . . .	Lester Woods Jr. . . . .	(573) 526-2978
State Design Engineer . . . . .	Kathy Harvey . . . . .	(573) 751-2876
Right of Way Director . . . . .	Kelly Lucas . . . . .	(573) 526-4362
Transportation Planning Director . . . . .	Machelle Watkins . . . . .	(573) 526-8058
Director of System Management . . . . .	Don Hillis . . . . .	(573) 751-6602
Highway Safety Director . . . . .	LeAnna Depue . . . . .	(573) 751-7643
State Maintenance Engineer . . . . .	Jim Carney . . . . .	(573) 751-2785
Motor Carrier Services Director . . . . .	Jan Skouby . . . . .	(573) 751-4021
State Traffic Engineer . . . . .	Eileen Rackers . . . . .	(573) 526-0117

### System Facilitation Team

Controller . . . . .	Deborah Rickard . . . . .	(573) 751-7098
Equal Opportunity Director . . . . .	Brenda Treadwell-Martin . . . . .	(573) 751-8602
General Services Director . . . . .	Beth Ring . . . . .	(573) 751-3720
Human Resources Director . . . . .	Micki Knudsen . . . . .	(573) 751-2804
Information Systems Director . . . . .	Mike Miller . . . . .	(573) 526-8002
Resource Management Director . . . . .	Brenda Morris . . . . .	(573) 526-8106
Risk and Benefits Management Director . . . . .	Jeff Padgett . . . . .	(573) 526-0138
MoDOT and Patrol Employees' Retirement System . . . . .	Susie Dahl . . . . .	(573) 298-6080

### District Engineers

Northwest District . . . . . <i>3602 N. Belt Hwy., St. Joseph 64506</i>	Don Wichern . . . . .	(816) 387-2350
North Central District . . . . . <i>902 N. Missouri St., PO Box 8, Macon 63552</i>	Dan Niec . . . . .	(660) 385-3176
Northeast District . . . . . <i>1711 Hwy. 61 S., PO Box 1067, Hannibal 63401</i>	Paula Gough . . . . .	(573) 248-2490
Kansas City Area District . . . . . <i>600 N.E. Colbern Rd., Lee's Summit 64086</i>	Beth Wright . . . . .	(816) 622-6500
Central District . . . . . <i>1511 Missouri Blvd., PO Box 718, Jefferson City 65102</i>	Roger Schwartze . . . . .	(573) 751-3322
St. Louis Metro District . . . . . <i>1590 Woodlake Dr., Chesterfield 63017-5712</i>	Ed Hassinger . . . . .	(314) 340-4100
Southwest District . . . . . <i>3901 E. 32nd St., Joplin 64804</i>	Rebecca Baltz . . . . .	(417) 629-3300
Springfield District . . . . . <i>3025 E. Kearney, MPO 868, Springfield 65801</i>	Kirk Juranas . . . . .	(417) 895-7600
South Central District . . . . . <i>910 Springfield Rd., PO Box 220, Willow Springs 65793</i>	Tom Stehn . . . . .	(417) 469-3134
Southeast District . . . . . <i>2675 N. Main St., PO Box 160, Sikeston 63801</i>	Mark Shelton . . . . .	(573) 472-5333