



Department of Insurance, Financial Institutions and Professional Registration

Truman State Office Bldg., Rm. 530
PO Box 690, Jefferson City 65102
Telephone: (573) 751-4126 / FAX: (573) 751-1165
Consumer Hotline: (800) 726-7390 / TT: (573) 526-4536
www.difp.mo.gov / www.insurance.mo.gov

The Department of Insurance, Financial Institutions and Professional Registration regulates the consumer service industries in Missouri by encouraging a fair and open market, establishing coherent and evolving policies that balance the interest of consumers, professionals and industry, and enforcing state laws and regulations governing business to protect consumers from unfair and inequitable treatment. The department is funded through fees and assessments from the industries and professionals regulated by the department rather than state general revenue.

Office of the Director

The director's office includes the department director, deputy director, general counsel, enforcement counsel, public information staff, legislative coordinator and support staff. The director's office also includes receivership activities. When a judge orders an insurance company into receivership, the director is responsible for either rehabilitating the company or liquidating it.

Insurance Consumer Affairs Division

The Consumer Affairs Division assists the general public in resolving complaints against insurance companies and agents, providing information to consumers regarding policies and investigating alleged acts of insurance fraud. Consumers can file complaints using the Consumer Insurance Hotline, (800) 726-7390 or through the department's Web site, www.insurance.mo.gov, which has a broad array of consumer and industry information available. In 2008, the division responded to more than 3,812 complaints and opened 1,048 investigations, recovering more than \$12 million for consumers. The division accepts complaints for all types of insurance, as well as motor vehicle service contracts and health care discount plans.

The division also investigates unlicensed insurance activities and reviews license applications that are referred from the Insurance Li-



JOHN HUFF
Department Director



JIM McADAMS
General Counsel



ROCHELLE HENDRICKSON
Director, Resource
Administration



JULIE PHELPS
Assistant to the Director

censing Section. Department investigations may result in license denials, revocations or suspensions, cease and desist orders, injunctions and referrals for criminal prosecution.

Division of Insurance Company Regulation

The Insurance Company Regulation Division monitors the financial condition of insurance companies operating in Missouri.

The division works to identify financially troubled companies so that action may be taken to prevent insolvencies. The division conducts financial examinations of 221 domestic insurance companies at least every four years. The department director can call for an examination of a licensed insurer at any time. The division also audits and determines premium taxes owed by insurance companies. Insurers pay a two percent premium tax in lieu of income taxes, except for workers compensation insurers, which pay a variable rate. The workers compensation premium tax rate for 2008 was one percent. The division certifies to the Department of Revenue the tax due from each company. In 2008, the division certified for collection over \$227 million in taxes, which is deposited into general revenue and the state school fund. The division also regulates surplus lines insurance, which accounted for over \$17 million in premium taxes in 2008.



FRED HESSE
Acting Director, Insurance
Company Regulation Division



MIKE WOOLBRIGHT
Chief Market Conduct Examiner



MATT BARTON
Licensing Manager



MARY KEMPER
Director, Market Regulation
Division



ANGELA NELSON
Director, Consumer Affairs
Division



MELISSA PALMER
Legislative Coordinator



TRAVIS FORD
Director of Communications

The division also verifies that insurers pay their assessments into the state's insurance guaranty funds, which back up insurance policies much the same way Federal Deposit Insurance Company (FDIC) insurance backs up bank deposits in case a company fails.

Division of Insurance Market Regulation

The Insurance Market Regulation Division protects Missouri consumers by examining insurance company practices for compliance with state law. Most insurance policies and rates must be filed with the division so that they can be reviewed to ensure they comply with state law.

Policies and rates are filed with three sections of the division: Life & Health Section, Property & Casualty Section (which includes auto, homeowners, workers' compensation and various types of liability insurance) and the Managed Care Section.

The division's Market Conduct Examination Section examines insurance companies' past treatment of policyholders through their marketing, rates, and complaint and claims handling. If violations of law are detected, the director can order an insurer to pay restitution to consumers, either through re-processing of claims or re-evaluation of the premium charged for the policy, as well as penalties. In 2008, consumer recoveries

totaled over \$6.6 million and fines totaled over \$750,000. The department director can call for a market conduct exam at any time.

The division also has a Statistics Section, which analyzes and publishes industry and market data as well as industry trends.

Resource Administration Division

The Resource Administration Division is responsible for the general operation and support within the department. The division also includes the Licensing Section, which handles licensing and renewals of nearly 120,000 insurance producers (agents), bail bond agents and public adjusters in Missouri. Other services provided by the division include financial, budget, human resources and information services.

Division of Finance

Truman State Office Bldg., Rm. 630
PO Box 716, Jefferson City 65102
Telephone: (573) 751-3242 / FAX: (573) 751-9192
www.missouri-finance.org

The Division of Finance incorporates and regulates state-chartered banks, trust companies, and savings and loan associations. The division is headed by the commissioner of finance, who is appointed by the governor with the advice and consent of the Senate.

The division has 21 administrative and clerical employees in the Jefferson City office and a total of 71 field examiners in Kansas City, St. Louis, Columbia, Springfield and Sikeston.

The division is funded through assessments and fees paid by licensees and other regulated entities.

Banking in Missouri

Missouri ranks fifth in the nation in the number of state-chartered commercial banks. As of December 31, 2008, the Division of Finance supervised 291 state-chartered banks and trust companies with combined total assets of \$76 billion. The deposits in all Missouri state-chartered banks and trust companies are insured by the FDIC; savings banks and savings and loan associations are also federally insured.

Branching and Interstate Banking

Since 1997, banks in Missouri have been allowed to merge with banks in other states. The Division of Finance has agreements with regulators in other states to examine banks with interstate branches.

Savings and Loan Supervision

The Division of Savings and Loan Supervision, created in 1895, was merged into the Division of Finance in 1994, giving the division supervision of state chartered savings and loan associations as well as licensing authority for mortgage brokers.

As of December 31, 2008, there were six savings and loan associations with total assets of \$424 million.

Mortgage Brokers

Currently there are 237 active licensees. Brokers are subject to surety bond and net worth requirements. A five-member Residential Mortgage Board approves regulations and hears appeals from the commissioner's decisions.

Consumer Credit

The Consumer Credit section supervises more than 2,800 institutions licensed for consumer lending, payday lending, automobile title lending, retail credit financing of motor vehicles and other goods and the financing of insurance premiums. The section also enforces the *Sale of Checks Law*, which provides for the licensing of companies that issue money orders or electronically transmit funds. The section also licenses financial services organizations engaged in credit repair and coordinates enforcement of the Missouri residential real estate anti-discrimination (redlining) laws.

Members, State Savings and Loan Commission*

- Butler, Charles R., (R)**, Neosho, Oct. 10, 2003;
- Fellhauer, Richard C., (R)**, St. Louis, Oct. 10, 2005;
- Plowman, Bayard C., (D)**, Hannibal, Aug. 29, 2003;
- Vacancies (2).**

*\$50 per diem.

State Banking Board*

- Williams, Glen (Brad), (D)**, chair, banker, Eminence, Aug. 29, 2009;
- Robuck, Robert M., (D)**, secretary, banker, Jefferson City, Aug. 28, 2007;
- Fast, M. Elizabeth, (R)**, attorney, Kansas City, Aug. 29, 2007;
- Renner, Linda G., (D)**, non-banker, St. Louis, Aug. 29, 2005;
- Vacancy (1).**

*\$100 per diem.

Residential Mortgage Board*

- Scates, John D., (R)**, St. Louis, Oct. 10, 2008;
- Smith, Richard L., (D)**, St. Louis, Oct. 10, 2009;
- Lucas, Gregory C., (R)**, St. Joseph, Oct. 10, 2010;
- Vacancies (2).**

*\$100 per diem

Division of Credit Unions

Truman State Office Bldg., Rm. 720
 PO Box 1607, Jefferson City 65102
 Telephone: (573) 751-3419 / FAX: (573) 751-6834
 www.cu.mo.gov

The Division of Credit Unions is the regulatory agency responsible for the examination, supervision, chartering, merger and liquidation of all state-chartered credit unions. The division also responds to consumer complaints.

The division director is appointed by the governor with the advice and consent of the Senate.

A director, deputy director, chief examiner, 10 examiners and three administrative personnel staff the division. Examiners are located in Kansas City, St. Louis and Jefferson City. The agency is funded through fees and assessments paid by state-chartered credit unions.

The division is an accredited agency through the National Association of State Credit Union Supervisors.

The National Credit Union Administration, an agency of the federal government, insures all member deposits.



RICHARD J. WEAVER
 Commissioner
 Division of Finance



GREGORY G. BARLOW
 Deputy Commissioner
 Division of Finance



JEFFERY T. MAASEN
 Chief Examiner
 Division of Finance



CHRISTIE KINCANNON
 Chief Counsel
 Division of Finance



JOE CRIDER
 Supervisor of Consumer Credit
 Division of Finance



DEBRA J. HARDMAN
 Supervisor of Applications
 Division of Finance



GLEN (BRAD) WILLIAMS
 Chair
 State Banking Board



ROBERT M. ROBUCK
 Secretary
 State Banking Board



M. ELIZABETH FAST
 Attorney
 State Banking Board



LINDA G. RENNER
 Member
 State Banking Board



CHARLES R. BUTLER
 Member, Savings and Loan
 Commission



RICHARD C. FELLHAUER
 Member, Savings and
 Loan Commission



BAYARD C. PLOWMAN
 Member, Savings and Loan
 Commission



JOHN D. SCATES
 Member
 Residential Mortgage Board



GREGORY C. LUCAS
 Member
 Residential Mortgage Board



JOHN C. HANNEKE
Secretary
Credit Union Commission



JOVITA FOSTER
Member
Credit Union Commission



LAWRENCE GIESING
Member
Credit Union Commission



HAL JAMES
Member
Credit Union Commission



DONALD (Eric) PARK
Member
Credit Union Commission



CATHY STROUD
Member
Credit Union Commission



CHARLES WAALKES
Member
Credit Union Commission



KEVIN WEAVER
Chief Examiner
Division of Credit Unions

As of December 31, 2008, Missouri ranked eighth in the nation in the number of state-chartered credit unions. The Division of Credit Unions currently regulates 137 credit unions with assets exceeding \$9.5 billion. There are approximately 1.2 million members of Missouri credit unions.

The Credit Union Commission hears appeals from decisions of the division director, approves regulations proposed by the director, and advises the director on matters pertaining to the supervision of credit unions. The bipartisan commission has seven members: four with credit union experience, two individuals not involved in financial institutions and one lawyer. Members are appointed by the governor with the advice and consent of the Senate to six-year terms. Members serve until they are re-appointed or replaced.

Credit Union Commission*

- Hanneke, John C.**, (D), secretary, St. Louis, Jan. 1, 2009;
- Foster, Jovita**, (D), St. Louis, Jan. 1, 2009;
- Giesing, Lawrence**, (D), St. Louis, Jan. 1, 2009;
- James, Hal**, (R), Columbia, Jan. 1, 2013;
- Park, Donald (Eric)**, (R), Washington, Jan. 1, 2011;
- Stroud, Cathy**, (R), Springfield, Jan. 1, 2013;
- Waalkes, Charles**, (R), Chesterfield, Jan. 11, 2011.

*\$100 per diem.



KEN BONNOT
Deputy Director
Division of Credit Unions

Division of Professional Registration

3605 Missouri Blvd., PO Box 1335, Jefferson City 65102
Telephone: (573) 751-0293 / FAX: (573) 751-4176
TT: (800) 735-2966 / Voice Relay: (800) 735-2466
www.pr.mo.gov
Email: profreg@pr.mo.gov

Note: Board members continue to serve after term expires until reappointed or replaced.

The Division of Professional Registration protects the public by licensing qualified professionals, enforcing standards of discipline and maintaining an open communication network with more than 400,000 licensees in Missouri. The division's licensing boards and commissions

provide the consumer an accessible, responsible and accountable regulatory system. The division director and all members of the boards and commissions are appointed by the governor with the advice and consent of the Senate.

The staff of the division provides services to each of the boards and commissions with respect to the collection fees, budget, building and equipment management, legislation and accounting for all license renewal activities. The 39 agencies within the division license 240 professions and are charged with safeguarding the public interest.

The division is funded by licenses, permits, registrations and other fees paid by individuals and entities regulated by the various boards and commissions.

Missouri State Board of Accountancy

3605 Missouri Blvd., PO Box 613
Jefferson City 65102-0613
Telephone: (573) 751-0012 / FAX: (573) 751-0890
TT: (800) 735-2966 / Voice Relay: (800) 735-2466
www.pr.mo.gov/accountancy.asp
Email: mosba@pr.mo.gov

The Missouri State Board of Accountancy was created in 1909 to enforce Chapter 326 RSMo and regulate individuals, sole proprietors, limited liability companies, partnerships and professional corporations engaged in the practice of public accounting.

Mission: The board regulates the practice of accounting to assure users of financial and economic data of an independent, objective and uniform product based on generally accepted accounting principles and auditing standards. It also ensures services are provided by competent and ethical practitioners. Certified public accountants (CPAs) receive this designation from the board.

Duties of board: Examination; licensing, regulation, investigating consumer complaints and discipline of those subject to board supervision; also, investigating complaints about those practicing without a license.

Number of certificate holders, licensed professionals and entities (2008): 19,487

Board composition: Seven members (serving five-year terms): six CPAs and one public member.

Associations: National Association of State Boards of Accountancy, Federation of Associations of Regulatory Boards (FARB), Council on Licensure, Enforcement and Regulation (CLEAR).

Missouri State Board of Accountancy*

- Jean, Wayne, CPA**, president, Dexter, July 1, 2010;
- Soltys, Patricia, CPA**, vice president, Kansas City, July 1, 2011;
- Tvrdik, John, CPA**, treasurer, Ellisville, July 1, 2011;



JANE RACKERS
Director, Division of
Professional Registration



WAYNE JEAN, CPA
President
Missouri Board of Accountancy



PATRICIA SOLTYS, CPA
Vice President
Missouri Board of Accountancy



VENABLE HOUTS, CPA
Secretary
Missouri Board of Accountancy



JOHN TVRDIK, CPA
Treasurer
Missouri Board of Accountancy



RICHARD POPP
Public Member
Missouri Board of Accountancy



PAMELA HILL, CPA
Executive Director
Missouri Board of Accountancy



RANDALL B. MILTENBERGER, A.I.A.
Chair, Architectural Division



ROBERT N. HARTNETT, R.L.A.
Chair, Landscape Architectural Division



MICHAEL D. GRAY, P.L.S.
Chair, Professional Land Surveying Division



MICHAEL FREEMAN, P.L.S.
Member, Professional Land Surveying Division



C. ROYCE FUGATE, P.E.
Chair, Professional Engineering Division



JERANY L. JACKSON, R.L.A.
Member, Landscape Architectural Division



PROMOD KUMAR, P.E.
Member, Professional Engineering Division



KEVIN SKIBISKI
Member, Professional Engineering Division



JOHN R. TEALE, P.L.S.
Member, Professional Land Surveying Division



KATHLEEN A. WARMAN, A.I.A.
Member Architectural Division

Houts, Venable, CPA, secretary, Kirkwood, July 1, 2012;
Popp, Richard, public member, St. Louis, July 1, 2012;
Vacancies (2);
Hill, Pamela, CPA, executive director.

* \$70 per diem.

Missouri Board for Architects, Professional Engineers, Professional Land Surveyors and Landscape Architects

3605 Missouri Blvd., PO Box 184, Jefferson City 65102
Telephone: (573) 751-0047 / FAX: (573) 751-8046
TT: (800) 735-2966 / Voice Relay: (800) 735-2466
www.pr.mo.gov/apelsla.asp
Email: moapels@pr.mo.gov

The Missouri Board for Architects, Professional Engineers, Professional Land Surveyors and Landscape Architects (APELSLA) was created in 1941 to enforce Chapter 327, RSMo, and regulate individuals practicing architecture, engineering, land surveying or landscape architecture; and corporations rendering or offering architectural, engineering, land surveying or landscape architectural services.

Mission: Protect the health, safety and welfare of the citizens of Missouri against the danger of collapse of structures erected for public use; safeguard Missouri residents and their property from damages that might result from illegal and incompetent architectural, engineering, land surveying and landscape architectural practices.

Duties of board: Licensing, regulation, investigating consumer complaints and discipline of those subject to board supervision; also, investigating complaints about those practicing without a license.

Number of licensed professionals and entities (2008): 25,458

Board composition: 14 members (serving four-year terms): one public member, 13 members licensed under Missouri law, residents of Missouri for at least five years and actively engaged in the practice of their profession for 10 consecutive years prior to their appointments.

Associations: National Council of Architectural Registration Boards (NCARB); National Council of Examiners for Engineering and Surveying (NCEES); and, Council for Landscape Architectural Registration Boards (CLARB).

Missouri Board for Architects, Professional Engineers, Professional Land Surveyors and Landscape Architects*

Miltenberger, Randall B., A.I.A., chair, Architectural Division, St. Louis, Sept. 30, 2009;

Hartnett, Robert N., R.L.A., chair, Landscape Architectural Division, Lee's Summit, Sept. 30, 2011

Gray, Michael D., P.L.S., chair, Professional Land Surveying Division, Ash Grove, Sept. 28, 2008;

Freeman, Michael, P.L.S., member, Professional Land Surveying Division, Hermitage, Sept. 28, 2010;

Fugate, C. Royce, P.E., chair, Professional Engineering Division, West Plains, Sept. 30, 2008;

Jackson, Jerany L., R.L.A., member, Landscape Architectural Division, Springfield, April 16, 2006;

Kumar, Promod, P.E., member, Professional Engineering Division, St. Louis, Sept. 30, 2009;

Pacino, Marian, public member, St. Louis, Aug. 18, 2006;

Skibiski, Kevin, P.E., member, Professional Engineering Division, Ozark, Sept. 30, 2011;

Teale, John R., P.L.S., member, Professional Land Surveying Division, Maryville, Sept. 30, 2009;

Warman, Kathleen A., A.I.A., member, Architectural Division, Kansas City, Sept. 30, 2008;

Vacancies (3);

Kempker, Judy A., executive director.

* \$50 per diem.

Office of Athlete Agents

3605 Missouri Blvd., PO Box 1335, Jefferson City 65102
Telephone: (573) 526-0243 / FAX: (573) 751-5649
TT: (800) 735-2966 / Voice Relay: (800) 735-2466
www.pr.mo.gov/athleteagents.asp
Email: athleteagents@pr.mo.gov

The Office of Athlete Agents was created in 2004 to enforce Chapter 436.215-436.272 RSMo and regulate athlete agents who enter into an agency contract with student athletes or directly



MARIAN PACINO
Public Member
APELSLA Board



JUDY A. KEMPKER
Executive Director
APELSLA Board



TIMOTHY J. LUECKENHOFF
Executive Director
Office of Athlete Agents
Administrator, Office of Athletics



BECKY DUNN
Executive Director
Office of Athletics

or indirectly recruit or solicit student athletes to enter into agency contracts.

Mission: Protect the rights of and act in the best interest of student athletes who enter in to contracts with athlete agents.

Duties of office: License, regulate, investigate consumer complaints and discipline of those subject to board supervision; investigate complaints about those practicing without a license.

Number of licensed professionals (2008): 43

About the office: The office is staffed by an executive director and clerical staff. Rather than an oversight board or commission, the office is overseen by the Director of Professional Registration.

Associations: Council on Licensure, Enforcement and Regulation (CLEAR).

Lueckenhoff, Tim, executive director.

Office of Athletics

3605 Missouri Blvd., PO Box 1335, Jefferson City 65102
Telephone: (573) 751-0243 / FAX: (573) 751-5649
TT: (800) 735-2966 / Voice Relay: (800) 735-2466
www.pr.mo.gov/athletics.asp
Email: athletic@pr.mo.gov

The Office of Athletics was created to enforce Chapter 317 RSMo and regulate promoters, contestants, matchmakers, managers, referees, judges, timekeepers, announcers, seconds and physicians.

Also, a permit is granted for each event allowing the contest to be held under the supervision of the Office of Athletics rules and regulations.

Mission: To protect health and safety of participants in professional boxing, sparring, professional wrestling, professional kick boxing, professional mixed martial arts and professional full-contact karate contests.

Duties of office: License, regulate, investigate consumer complaints and discipline of those subject to board supervision; investigate complaints about those practicing without a license or in violation of statutory and regulatory authority. The office collects permit and license fees and assesses a tax of five percent of the gross receipts on all contests.

Office staff attends every professional boxing and mixed martial arts event to monitor and inspect weigh-ins, physicals, safety equipment such as gloves, rings and cages and to ensure the venue meets requirements and the rules of the ring are followed. An inspector attends every professional wrestling match to ensure the event meets state requirements. The office has authority to suspend a contestant's license for 180 days as a medical precaution.

Number of licensed professionals (2008): 2,027

Number of event permits issued (2008): 102

About the office: The office is staffed by an executive director, an administrator and a clerical staff. Rather than an oversight board or commission, the office is overseen by the director of professional registration.

Associations: Association of Boxing Commissions (ABC), Council on Licensure, Enforcement and Regulation (CLEAR).

Lueckenhoff, Tim, administrator.

Dunn, Becky, executive director.

State Board of Chiropractic Examiners

3605 Missouri Blvd., PO Box 672
Jefferson City 65102-0672
Telephone: (573) 751-2104 / FAX: (573) 751-0735
TT: (800) 735-2966 / Voice Relay: (800) 735-2466
www.pr.mo.gov/chiropractors.asp
Email: chiropractic@pr.mo.gov

The State Board of Chiropractic Examiners was created in 1927 to enforce Chapter 331 RSMo, and regulate chiropractic physicians (chiropractors). The board also certifies qualified chiropractic physicians to perform meridian therapy, acupuncture or acupressure (MTAA) and certifies insurance consultants. As an insurance consultant, a chiropractic physician advises health insurance providers on issues pertaining to coverage of chiropractic treatment.

Duties of board: License, regulate, investigate consumer complaints and discipline of those sub-



HOMER THOMPSON, D.C.
President, Board of
Chiropractic Examiners



RICHARD D. JAMES, D.C.
Secretary, Board of
Chiropractic Examiners



JACK D. RUSHIN, D.C.
Member, Board of
Chiropractic Examiners



WILLIAM F. MADOSKY, D.C.
Member, Board of
Chiropractic Examiners



PAUL NAHON
Public Member, Board of
Chiropractic Examiners



LOREE KESSLER, M.P.A.
Executive Director, Board of
Chiropractic Examiners

ject to licensure requirements, investigate complaints about those practicing without a license.

Associations: Federation of Chiropractic Licensing Boards (FCLB)

Number of licensed professionals (2008): 2,217

Board composition: Six members (serving four-year terms): five licensed chiropractic physicians and one public member.

Advisory Committee assigned to the State Board of Chiropractic Examiners (responsible for advising the board on the regulation of this professions): Acupuncturist Advisory Committee (created 1998).

State Board of Chiropractic Examiners*

Thompson, Homer, D.C., president, Springfield, Feb. 15, 2009;

Rushin, Jack D., D.C., secretary, Poplar Bluff, April 22, 2007;

Carver, Gary, D.C., member, Kansas City, March 14, 2012;

James, Richard D., D.C., member, St. Peters, Jan. 24, 2010;

Madosky, William F., D.C., member, Richmond Heights, April 26, 2011;

Nahon, Paul, public member, Springfield, Jan. 24, 2011;

Kessler, Loree, M.P.A., executive director.

*\$50 per diem.

Acupuncturist Advisory Committee

3605 Missouri Blvd., PO Box 1335, Jefferson City 65102
Telephone: (573) 526-1555 / FAX: (573) 751-0735
TT: (800) 735-2966 / Voice Relay: (800) 735-2466
www.pr.mo.gov/acupuncturist.asp
Email: acupuncture@pr.mo.gov

The Acupuncturist Advisory Committee was established in 1998 and adopts and revises rules, reviews and issues licenses, reviews all complaints and/or investigations, and advises the State Board of Chiropractic Examiners on all matters pertaining to the licensing of acupuncturists.

The committee is composed of three acupuncturists, one chiropractic physician duly licensed by the Missouri State Board of Chiropractic Examiners and a member of the board, and one public member.

Acupuncturist Advisory Committee

VanSant, Jane L., chair/public member, Leeton, Dec. 10, 2007;

Coleton, Kathleen A., member, Lee's Summit, Dec. 10, 2010;

Hackler, Jason, member, St. Louis, Dec. 10, 2008;

James, Richard, D.C., member, St. Peters, Dec. 10, 2011;

Vacancy (1);

Kessler, Loree, M.P.A., executive director.

State Board of Cosmetology and Barber Examiners

3605 Missouri Blvd., PO Box 1062, Jefferson City 65102
Telephone: (866) 762-9432 or (573) 751-1053
FAX: (573) 751-8167
TT: (800) 735-2966 / Voice Relay: (800) 735-2466
www.pr.mo.gov/cosbar.asp
Email: cosbar@pr.mo.gov

The State Board of Cosmetology and Barber Examiners was created in 2005, merging the State Board of Barber Examiners and the State Board of Cosmetology. The licensing of barbers and the barber board was created in 1899 and the li-



KATHLEEN A. COLETON
Member, Acupuncturist
Advisory Committee



DR. RICHARD JAMES
Member, Acupuncturist Advisory
Committee



LOREE KESSLER, M.P.A.
Executive Director, Acupuncturist
Advisory Committee

censing of cosmetologists began in 1929 and the State Board of Cosmetology was created in 1956. The board enforces Chapters 328 and 329 RSMo, and regulates barbers, cosmetologists, manicurists, estheticians, instructors, salons, barbershops and cosmetology and barber schools.

Mission: Protect the public's health, safety and welfare by ensuring that only qualified persons are examined and licensed to practice barbering and cosmetology, as well as to strive to reduce the number of instances of incompetent, negligent, fraudulent or dishonest services provided by licensees. Also, conduct inspections of the establishments and schools.

Duties of board: License, regulate, investigate consumer complaints and discipline of those subject to board supervision; investigate complaints about those practicing without a license.

Number of licensed professionals and entities (2008): 75,921

Board composition: 11 board members, including four licensed cosmetologists (three with Class-CA licenses and one with any type of cosmetology classification), two cosmetology school owners, three licensed barbers and two public members. Board members serve five-year terms.

Associations: National Interstate Council of State Boards of Cosmetology, National Association of Barber Boards of America.



CYNTHIA WEBB BALD
President, Board of Cosmetology and Barber Examiners



JASPER KEE
Vice President, Board of Cosmetology and Barber Examiners



KIMBERLY MARSHALL
Secretary, Board of Cosmetology and Barber Examiners



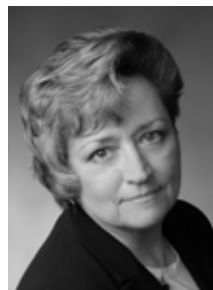
LEILA COHOON
Member, Board of Cosmetology and Barber Examiners



ANNIE DIXON
Public Member, Board of Cosmetology and Barber Examiners



WAYNE KINDLE
Member, Board of Cosmetology and Barber Examiners



BETTY LEAKE
Member, Board of Cosmetology and Barber Examiners



DARLA FOX
Executive Director, Board of Cosmetology and Barber Examiners

State Board of Cosmetology and Barber Examiners*

Bald, Cynthia Webb, president, Cameron, May 1, 2010;
Kee, Jasper, vice president, Kansas City, May 1, 2010;
Marshall, Kimberly, secretary, Jefferson City, May 1, 2010;
Cohoon, Leila, member, Lake Lotawana, May 1, 2009;
Dixon, Annie, public member, Hannibal, May 1, 2009
Leake, Betty, member, Tebbetts, May 1, 2009;
Kindle, Wayne, member, Lee's Summit, May 1, 2011;
Vacancies (3);
Fox, Darla, executive director.

*\$70 per diem.

Committee for Professional Counselors

3605 Missouri Blvd., PO Box 1335, Jefferson City 65102
 Telephone: (573) 751-0018 / FAX: (573) 526-0735
 TT: (800) 735-2966 / Voice Relay: (800) 735-2466
www.pr.mo.gov/counselors.asp
 Email: prof counselor@pr.mo.gov

The Committee for Professional Counselors was created in 1985 to enforce Chapter 337

RSMo and regulate licensed professional counselors (LPCs).

Duties of committee: License, regulate, investigate consumer complaints and discipline of those subject to licensure requirements; investigate complaints about those practicing without a license.

Number of licensed professionals (2008): 4,176

Committee composition: Six members (serving four-year terms): five LPCs and one public member.

Associations: American Association of State Counseling Boards (AASCB), American Counseling Association (ACA) and Missouri Mental Health Counselors Association (MMHCA).

Committee for Professional Counselors*

Roeback, Gregg, chair, Washington, Aug. 28, 2007;
Pope, Verl, Ed.D., secretary, Cape Girardeau, Aug. 28, 2009;
Comensky, Mark, Ph.D., member, Nevada, Aug. 28, 2001;
Dexter, Gene, Ph.D., public member, Blue Springs, Aug. 28, 2008;
Spare, Keith, member, Kansas City, Aug. 28, 2007;



GREGG ROEBACK
Chair, Committee for Professional Counselors



MARK COMENSKY, Ph.D.
Member, Committee for Professional Counselors



KEITH SPARE
Member, Committee for Professional Counselors



GENE DEXTER, Ph.D.
Public Member, Committee for Professional Counselors

Vacancy (1);
Kessler, Loree, M.P.A., executive director.

*\$50 per diem.

Missouri Dental Board

3605 Missouri Blvd., PO Box 1367, Jefferson City 65102
 Telephone: (573) 751-0040 / FAX: (573) 751-8216
 TT: (800) 735-2966 / Voice Relay: (800) 735-2466
www.pr.mo.gov/dental.asp
 Email: dental@pr.mo.gov

The Missouri Dental Board was created in 1897 to enforce Chapter 332 RSMo, and regulate dentists, specialists, and dental hygienists.

Duties of board: License, regulate, investigate consumer complaints and discipline of those subject to board supervision; investigate complaints about those practicing without a license.

Number of licensed professionals (2008): 7,337

Board composition: Seven members (serving five-year terms): five dentists, one public member and one dental hygiene member.

Advisory commissions within the Missouri Dental Board (responsible for advising the board on the regulation of these professions): Advisory Commission for Dental Hygienists (created 2001) Associations: American Association of Dental Examiners (AADE), Western Regional Examining Board, Central Regional Dental Testing Service, Inc.

Missouri Dental Board*

McCoy, Rolfe C., D.M.D., president, Chillicothe, Oct. 16, 2009;
Wallace, Kevin D., D.M.D., vice president, Rogersville, Oct. 16, 2010;
Aubert, Eric, D.M.D., member, St. Louis, Oct. 16, 2011;
Lepp, Patricia A., R.D.H., dental hygiene member, St. Louis, Jan. 10, 2009;
Vacancies (3);
Barnett, Brian, executive director.

*\$50 per diem.



LOREE KESSLER, M.P.A.
Executive Director, Committee for Professional Counselors

Advisory Commission for Dental Hygienists*

Strait, Tia M., Ph.D., R.D.H., chair, Carthage, March 22, 2009
Lepp, Patricia, R.D.H., secretary, St. Louis, Jan. 10, 2009;
Adams, Debra A., R.D.H., member, Lebanon, March 22, 2011;
Polc, Deborah Kay, R.D.H., member, Independence, March 22, 2010;
Vacancy (1).

*\$50 per diem.

State Committee of Dietitians

3605 Missouri Blvd., PO Box 1335, Jefferson City 65102
 Telephone: (573) 522-3438 / FAX: (573) 526-3489
 TT: (800) 735-2966 / Voice Relay: (800) 735-2466
www.pr.mo.gov/dietitians.asp
 Email: diet@pr.mo.gov

The State Committee of Dietitians was created in 1998 to enforce Chapter 324 RSMo, and regulate licensed dietitians (LDs). Licensees must be registered dietitians (RD) with the American Dietetic Association.

Duties of committee: License, regulate, investigate consumer complaints and discipline of those subject to board supervision; investigate complaints about those practicing without a license.



ROLFE C. McCOY, D.M.D.
President
Missouri Dental Board



KEVIN D. WALLACE, D.M.D.
Vice President
Missouri Dental Board



ERIC AUBERT, D.M.D.
Member
Missouri Dental Board



PATRICIA A. LEPP, R.D.H.
Dental Hygiene Member,
Missouri Dental Board



BRIAN BARNETT
Executive Director
Missouri Dental Board



TIA M. STRAIT, Ph.D., R.D.H.
Chair, Advisory Commission for
Dental Hygienists



DEBORAH KAY POLC, R.D.H.
Secretary, Advisory Commission
for Dental Hygienists



DEBRA A. ADAMS, R.D.H.
Member, Advisory Commission
for Dental Hygienists



LOIS KRAMER-OWENS, R.D., L.D.
Chair
State Committee of Dietitians



TERRI POWELL, R.D., L.D.
Secretary
State Committee of Dietitians



NOLAN McNEILL
Public Member
State Committee of Dietitians



TOM REICHARD
Executive Director
State Committee of Dietitians

Number of licensed professionals (2008): 1,457
Committee composition: Six members serving (four-year terms): five dietitians and one public member.

State Committee of Dietitians*

Kramer-Owens, Lois, R.D., L.D., chair, Camden-ton, June 11, 2006;
Powell, Terri, R.D., L.D., secretary, St. Louis, June 11, 2007;
Greer, Dixie, member, Hazelwood, June 11, 2009;
McNeill, Nolan, public member, Cassville, June 11, 2005;
Vacancies (2);

Reichard, Tom, executive director.

* \$50 per diem.

State Board of Embalmers and Funeral Directors

3605 Missouri Blvd., PO Box 423, Jefferson City 65102
Telephone: (573) 751-0813 / FAX: (573) 751-1155
TT: (800) 735-2966 / Voice Relay: (800) 735-2466
www.pr.mo.gov/embalmers.asp
Email: embalm@pr.mo.gov

The State Board of Embalmers and Funeral Directors was created in 1965 as an expansion of the board created in 1895 for embalmers only. This board enforces Chapter 333 and 436 RSMo,



MARTIN VERNON
Chair, State Board of Embalmers
and Funeral Directors



GARY FRAKER
Vice Chair, State Board of Em-
balmers and Funeral Directors



DANIEL TODD MAHN
Secretary, State Board of Em-
balmers and Funeral Directors



JOY GERSTEIN
Public Member, State Board of
Embalmers and Funeral Directors



JOHN McCULLOCH
Member, State Board of Embalm-
ers and Funeral Directors



JIM REINHARD
Member, State Board of Embalm-
ers and Funeral Directors



BECKY DUNN
Executive Director, State Board of
Embalmers and Funeral Directors



TOM REICHARD
Executive Director, Advisory Of-
fice of Endowed Care
Cemeteries

and regulates funeral directors, embalmers, fu-
neral establishments (funeral homes), preneed
funeral providers and sellers.

Mission: To ensure safety, hygiene and fair treat-
ment of consumers in the disposition of the
human body.

Duties of board: License, regulate, investigate
consumer complaints and discipline of those sub-
ject to board supervision; investigate complaints
about those practicing without a license. Also,
conducting inspections of the establishments.

**Number of licensed professionals and entities
(2008):** 4,962.

Board composition: Six members (serving five-
year terms): five licensed embalmers or funeral
directors. No more than three members can be-
long to the same political party.

Associations: International Conference of Fu-
neral Service Examining Boards (Conference),
Federations of Associations of Regulatory Boards
(FARB), National Funeral Directors Association
(NFDA), Missouri Funeral Directors and Embalm-
ers Association (MFDEA), Council on Licensure,
Enforcement and Regulation (CLEAR).

**State Board of Embalmers and
Funeral Directors***

Vernon, Martin, chair, Hartville, April 1, 2010;

Fraker, Gary, vice chair, Marshfield, April 1,
2011;
Mahn, Daniel Todd, secretary, De Soto, April 1,
2012;
Gerstein, Joy, public member, Washington, Sept.
1, 2006;
McCulloch, John, member, Jefferson City, April
1, 2014;
Reinhard, Jim, member, Paris, April 1, 2014;
Dunn, Becky, executive director.

*\$50 per diem.

Office of Endowed Care Cemeteries

3605 Missouri Blvd., PO Box 1335, Jefferson City 65102
Telephone: (573) 751-0849 / FAX: (573) 526-3489
TT: (800) 735-2966 / Voice Relay: (800) 735-2466
www.pr.mo.gov/endowedcare.asp
Email: endocare@pr.mo.gov

The Office of Endowed Care Cemeteries was
created in 1990 to enforce Chapter 214 RSMo,
and regulate endowed care cemeteries with a
trust fund set aside for maintenance, care and
upkeep. Most cemeteries owned by non-profit
organizations (such as churches, governments,
fraternal organizations, cemetery associations)
are exempt from state regulation.

Mission: To ensure that trust funds of endowed
care cemeteries are properly managed.

Duties of office: License, regulate, investigate consumer complaints and discipline of those subject to regulation; audits cemetery trust funds. In addition to funding from registered cemeteries, the office is also funded by fees generated from the issuance of vital records, such as birth and death certificates.

Number of licensed cemeteries (2008): 146

Composition of Endowed Care Cemetery Advisory Committee: Five members (serving four-year terms): Three registered endowed cemetery owners or managers and two public members. All members appointed by the director of professional registration.

Reichard, Tom, executive director.

Missouri Board of Geologist Registration

3605 Missouri Blvd., PO Box 1335, Jefferson City 65102
 Telephone: (573) 526-7625 / FAX: (573) 526-0661
 TT: (800) 735-2966 / Voice Relay: (800) 735-2466
www.pr.mo.gov/geologists.asp
 Email: geology@pr.mo.gov

The Missouri Board of Geologist Registration was created in 1994 to enforce Chapter 256 RSMo, and regulate geologists and geologists registrants in training.

Duties of board: License, regulate, investigate consumer complaints and discipline of those subject to board supervision; investigate complaints about those practicing without a license.

Number of licensed professionals (2008): 843

Board composition: Eight members (serving three-year terms): Five practitioners, with four members representing different geologic specialties and the fifth practitioner employed by the state, a city or county; two public members; and the state geologist (also appointed by the governor), who serves as an *ex officio* member.

Associations: Association of State Board of Geology (ASBOG), Council on Licensure, Enforcement and Regulation (CLEAR), Federation of Associations of Regulator Boards (FARB).

Missouri Board of Geologist Registration*

- Gilbert, Guy, R.G., P.E.**, chair, Jefferson City, April 11, 2006;
- Warner, Don L., P.E., R.G.**, vice chair, Rolla, April 11, 2007;
- Gulino, Joseph, Ph.D.**, secretary/public member, Hartsburg, April 11, 2008;
- Bognar, John L., R.G.**, member, St. Louis, April 11, 2007;
- Gillman, Joseph, R.G.**, *ex officio* state geologist;
- Pendergrass, Gary, R.G.**, member, Springfield, April 11, 2010;
- Vacancies (2);**



GUY GILBERT, R.G., P.E.
 Chair, Missouri Board of Geologist Registration



DON L. WARNER, P.E., R.G.
 Vice Chair, Missouri Board of Geologist Registration



JOSEPH GULINO, Ph.D.
 Secretary/Public Member, Missouri Board of Geologist Registration



JOHN L. BOGNAR, R.G.
 Member, Missouri Board of Geologist Registration



JOE GILLMAN
Ex Officio State Geologist, Missouri Board of Geologist Registration



GARY PENDERGRASS, R.G.
 Member, Missouri Board of Geologist Registration



PAMELA GROOSE
 Executive Director, Missouri Board of Geologist Registration



JEAN R. HAUSHEER, M.D.
 President, State Board of Registration for the Healing Arts



CURTIS MATHER, D.O.
 Secretary, State Board of Registration for the Healing Arts



BRADLEY FREEMAN, M.D.
 Member, State Board of Registration for the Healing Arts



KEITH A. LAFERRIERE, M.D.
 Member, State Board of Registration for the Healing Arts

Groose, Pamela, executive director.

*\$50 per diem.

State Board of Registration for the Healing Arts

3605 Missouri Blvd., PO Box 4, Jefferson City 65102
 Telephone: (573) 751-0098 / FAX: (573) 751-3166
 TT: (800) 735-2966 / Voice Relay: (800) 735-2466
www.pr.mo.gov/healingarts.asp
 Email: healingarts@pr.mo.gov

The State Board of Registration for the Healing Arts was created in 1939 to enforce Chapter 334.010-334.749 RSMo, and regulate physicians, physician assistants, surgeons, physical therapists, physical therapist assistants, speech-language pathologists, speech-language pathology aides, speech-language pathology assistants, audiologists (specialists in hearing disorders), audiology aides, athletic trainers, clinical perfusionists (defined as an individual who operates a heart & lung machine during surgery), and anesthesiologist assistants.

Duties of board: License, regulate, investigate consumer complaints and discipline of those subject to board supervision; investigate complaints about those practicing without a license.

Number of licensed professionals (2008): 36,053

Board composition: Nine members (serving four-year terms): at least five doctors of medicine (MD), at least two doctors of osteopathy (DO) and one public member. Any time there is a vacancy on the board, Missouri law requires the president of the Missouri State Medical Association, for all medical physician appointments, or the president of the Missouri Association of Osteopathic Physicians and Surgeons, for all osteopathic physician appointments, to submit the names of five candidates to the director of Professional Registration.

Advisory commissions within the Board of Registration for the Healing Arts (responsible for advising the board on the regulation of these professions):



DAVID A. POGGEMEIER, M.D.
 Member, State Board of Registration for the Healing Arts



DANIEL SCODARY, M.D.
 Member, State Board of Registration for the Healing Arts



TINA STEINMAN
 Executive Director, State Board of Registration for the Healing Arts

- Advisory Commission for Anesthesiologist Assistants (created 2003).
- Advisory Commission for Professional Physical Therapists (created 1989).
- Athletic Trainers Advisory Committee (created 1983).
- Advisory Commission for Physician Assistants (created 1996).
- Advisory Commission for Speech-Language Pathologists and Audiologists (created 1986).
- Advisory Commission for Clinical Perfusionists (created 1997).

State Board of Registration for the Healing Arts*

Hausheer, Jean R., M.D., president, Independence, Sept. 3, 2008;
Mather, Curtis, D.O., secretary, Lebanon, Sept. 3, 2010;
Freeman, Bradley, M.D., member, St. Louis, Sept. 3, 2011;
LaFerriere, Keith A., M.D., member, Springfield, Sept. 3, 2008;
Poggemeier, David A., M.D., member, St. Charles, Sept. 3, 2010;
Scodary, Daniel, M.D., member, Bridgeton, Sept. 3, 2007;
Vacancies (3);
Steinman, Tina, executive director.

*\$50 per diem.

Advisory Commission for Physical Therapists*

Burnett, Paula, P.T., chair, Jefferson City, Oct. 1, 2009;
Hopfinger, William P., P.T., secretary, St. Louis, Oct. 1, 2009;
Pastrino, Judith, P.T.A., member, St. Louis, Oct. 1, 2010;
Vacancies (2).

*\$50 per diem.

Athletic Trainers Advisory Committee*

Meeks, Robin E., A.T.C., chair, Springfield, Nov. 1, 2011;
Bailey, Robert G., J.D., public member, Columbia, July 31, 2011;
Donnell, John R., A.T.C., member, Lee's Summit, Oct. 15, 2010;
Forbis, Pat, A.T.C., member, Jefferson City, June 4, 2011;
Yetter, John T., M.D., physician member, Bridgeton, April 1, 2012.

*\$50 per diem.

Advisory Commission for Anesthesiologists Assistants*

Kelly, James B., M.D., chair, Kansas City, July 1, 2008;
Cooper, Timothy J.P., M.D., member, St. Charles, July 1, 2008;
Fritzlen, Thomas J. Jr., public member, Kansas City, July 1, 2008;
Vacancies (2).

*\$50 per diem.



PAULA BURNETT, P.T.
Chair, Advisory Commission for Physical Therapists



WILLIAM P. HOPFINGER, P.T.
Secretary, Advisory Commission for Physical Therapists



JUDITH PASTORINO, P.T.A.
Member, Advisory Commission for Physical Therapists



ROBIN E. MEEKS, A.T.C.
Chair, Athletic Trainers Advisory Committee



ROBERT G. BAILEY, J.D.
Public Member, Athletic Trainers Advisory Committee



JOHN DONNELL, A.T.C.
Member, Athletic Trainers Advisory Committee



PAT FORBIS, A.T.C.
Member, Athletic Trainers Advisory Committee



JOHN T. YETTER, M.D.
Physician Member, Athletic Trainers Advisory Committee



TIMOTHY J.P. COOPER, M.D.
Member, Advisory Commission for Anesthesiologists Assistants



THOMAS J. FRITZLEN JR.,
Public Member, Advisory Commission for Anesthesiologists Assistants



JAMES B. KELLY, M.D.
Chair, Advisory Commission for Anesthesiologists Assistants



LARRY MAZZEO, M.A., A.U.D.
Chair, Advisory Commission for Speech-Language Pathologists and Clinical Audiologists



CHERYL PAGE, M.A.
Secretary, Advisory Commission for Speech-Language Pathologists and Clinical Audiologists



MELODY GNUSCHKE
Public Member, Advisory Commission for Speech-Language Pathologists and Clinical Audiologists



LINDA HAWKINS, M.S.
Member, Advisory Commission for Speech-Language Pathologists and Clinical Audiologists



DIANE GOLDEN, Ph.D.
Member, Advisory Commission for Speech-Language Pathologists and Clinical Audiologists

Advisory Commission for Speech-Language Pathologists and Clinical Audiologists*

Mazzeo, Larry, M.A., A.U.D., chair, Rolla, Jan. 31, 2008;
Page, Cheryl, M.A., secretary, Clinton, Oct. 31, 2006;
Ernst, Linda, M.S., member, Kansas City, Jan. 31, 2008;
Golden, Diane, M.S., Ph.D., member, Independence, Sept. 17, 2010;
Gnuschke, Melody, public member, Windsor, Dec. 9, 2008;
Hare, Charles, M.S., member, Independence, Sept. 17, 2010;
McGuire, Richard, Ph.D., member, St. Louis, Dec. 9, 2010.

*\$50 per diem.



RICHARD MCGUIRE, Ph.D.
Member, Advisory Commission for Speech-Language Pathologists and Clinical Audiologists

Hausheer, Jean, M.D., board member, Independence, Sept. 3, 2008.

*\$50 per diem.

Advisory Commission for Physician Assistants*

Karns, Stacey L., P.A.-C., chair, New Hampton, March 27, 2010;
Nevels, Anitra, secretary/public member, St. Louis, March 27, 2006;

Advisory Commission for Clinical Perfusionists*

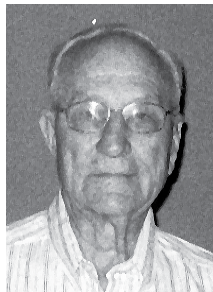
Phillips, Michael, C.C.P., chair, Columbia, Feb. 13, 2011;
Dayton, Russell E., public member, Cameron, Feb. 13, 2009;



STACEY KARNs, PA-C
Chair, Advisory Commission for Physicians Assistants



ANITRA NEVELS
Secretary/Public Member, Advisory Commission for Physician Assistants



RUSSEL E. DAYTON
Public Member, Advisory Commission for Clinical Perfusionists



MARY LOU HART, C.C.P.
Member, Advisory Commission for Clinical Perfusionists



JEANNE R. RHOADES, C.C.P.
Member, Advisory Commission for Clinical Perfusionists



MARGARET RUSSELL, C.C.P.
Member, Advisory Commission for Clinical Perfusionists



ERVIN DOCK
Chair, Board of Examiners for Hearing Instrument Specialists



LINDA ENGLEMANN
Member, Board of Examiners for Hearing Instrument Specialists



THERESA PARKER
Member Board of Examiners for Hearing Instrument Specialists



LOIS REINE
Public Member, Board of Examiners for Hearing Instrument Specialists



MARK STATES
Member, Board of Examiners for Hearing Instrument Specialists



MARTIN STRUCKHOFF
Member, Board of Examiners for Hearing Instrument Specialists

Hart, Mary Lou, C.C.P., member, Lake Lotawana, Feb. 13, 2008;

Rhoades, Jeanne R., C.C.P., member, St. Louis, Feb. 13, 2007;

Russell, Margaret, C.C.P., member, Kansas City, Feb. 13, 2009;

Steffen-Drake, Judith, C.C.P., member, Springfield, Feb. 13, 2005.

Vacancy (1).

* \$50 per diem.

Board of Examiners for Hearing Instrument Specialists

3605 Missouri Blvd., PO Box 1335, Jefferson City 65102
Telephone: (573) 751-0240 / FAX: (573) 526-3856
TT: (800) 735-2966 / Voice Relay: (800) 735-2466
www.pr.mo.gov/hearing.asp
Email: behis@pr.mo.gov

The Board of Examiners for Hearing Instrument Specialists was created in 1995 to enforce Chapter 346 RSMo, and regulate individuals selling and fitting hearing instruments (hearing aids).

Duties of board: License, regulate, investigate consumer complaints and discipline of those sub-



DANA K. HOELSCHER
Executive Director, Board of Examiners for Hearing Instrument Specialists



JEANINE BEQUETTE
Chair
Interior Design Council



DONALD R. ENGLAND
Member
Interior Design Council



ELIZABETH A. HARMON-VAUGHAN
Member
Interior Design Council

ject to board supervision; investigate complaints about those practicing without a license.

Number of licensed professionals (2008): 268

Board composition: Eight members (serving four-year terms): five hearing-instrument specialists, one otolaryngologist (an ear, nose and throat – ENT - physician licensed by the Board of Healing Arts), one public member and one licensed audiologist holding a certificate of clinical competence.

Associations: Council on Licensure, Enforcement and Regulation (CLEAR).

Board of Examiners for Hearing Instrument Specialists*

Dock, Ervin, chair, Springfield, Jan. 11, 2009;
Engelmann, Linda, vice chair, Liberty, Jan. 11, 2011;
Parker, Theresa, member, Kansas City, Jan. 11, 2010;
Reine, Lois, public member, Jefferson City, Jan. 11, 2008;
States, Mark, member, King City, Jan. 11, 2010;
Struckhoff, Martin, member, Washington, Jan. 11, 2009;
Vacancies (2);
Hoelscher, Dana K., executive director.

*\$50 per diem.

Interior Design Council

3605 Missouri Blvd., PO Box 1335, Jefferson City 65102
Telephone: (573) 522-4683 / FAX: (573) 526-3489
TT: (800) 635-2966 / Voice Relay: (800) 735-2466
www.pr.mo.gov/interior.asp
Email: intdesn@pr.mo.gov

The Interior Design Council was created in 1998 to enforce Chapter 324 RSMo, and regulate individuals using the title "Registered Interior Designer."

Duties of council: License, regulate, investigate consumer complaints and discipline of those sub-



TOM REICHARD
Executive Director
Interior Design Council

ject to board supervision; investigate complaints about those practicing without a license.

Number of licensed professionals (2008): 102

Council composition: Five members (serving four-year terms): four interior designers and one public member.

Interior Design Council*

Bequette, Jeanine, chair, St. Louis, April 6, 2002;
England, Donald R., member, Columbia, April 6, 2005;
Harmon-Vaughan, Elizabeth A., member, Kansas City, April 6, 2004;
Vacancies (2);
Reichard, Tom, executive director.

* \$50 per diem.

State Committee of Interpreters

3605 Missouri Blvd., PO Box 1335, Jefferson City 65102
Telephone: (573) 526-7787 / FAX: (573) 526-0661
TT: (800) 735-2966 / Voice Relay: (800) 735-2466
www.pr.mo.gov/interpreters.asp
Email: interpreters@pr.mo.gov

The State Committee of Interpreters was created in 1994 to enforce Chapter 204 RSMo, and regulate sign language interpreters for the deaf



JOHN ADAMS
Chair, State Committee of Interpreters



TIM ECK
Member, State Committee of Interpreters



KATHLEEN ALEXANDER
Member, State Committee of Interpreters



LISA BETZLER
Public Member, State Committee of Interpreters



CARRIE MCCRAY
Member, State Committee of Interpreters



ANDREA SEGURA
Member, State Committee of Interpreters



PAMELA GROOSE
Executive Director, State Committee of Interpreters

and hard of hearing. These professionals provide services in courtrooms, hospitals, elementary and secondary schools as well as institutions of higher education and many other settings.

Duties of committee: License, regulate, investigate consumer complaints and discipline of those subject to board supervision; investigate complaints about those practicing without a license; serves as a liaison to the Missouri Commission for the Deaf and Hard of Hearing.

Number of licensed professionals (2008): 604

Committee composition: Seven members (serving four-year terms): Five interpreters and two public members. One of the public members must be a deaf person.

Associations: Federation of Associations of Regulatory Boards (FARB), Council on Licensure, Enforcement and Regulation (CLEAR).

State Committee of Interpreters*

Alexander, Kathleen, chair, Rocheport, Oct. 9, 2008;

Segura, Andrea, secretary, Liberty, Oct. 9, 2010;

Adams, John, member, St. Louis, Oct. 9, 2007;
Betzler, Lisa, public member, St. Louis, Dec. 11, 2006;

Eck, Tim, member, St. Louis, Oct. 30, 2007;
McCray, Carrie, member, Fulton, Oct. 9, 2009;

Vacancy (1);
Groose, Pamela, executive director.

*\$50 per diem.

State Committee of Marital and Family Therapists

3605 Missouri Blvd., PO Box 1335, Jefferson City 65102
Telephone: (573) 751-0870 / FAX: (573) 526-0735
TT: (800) 735-2966 / Voice Relay: (800) 735-2466
www.pr.mo.gov/marital.asp
Email: maritalfam@pr.mo.gov

The State Committee of Marital and Family Therapists was created in 1995 to enforce Chapter 337 RSMo, and regulate marital and family therapists.

Duties of committee: License, regulate, investigate consumer complaints and discipline of those subject to license requirements; investigate complaints about those practicing without a license.

Number of licensed professionals (2008): 173

Committee composition: Six members (serving five-year terms): four marital and family therapists and two public members.

Associations: Association of Marital and Family Therapy Regulatory Boards (AMFTRB).



ELIZABETH KINGSLEY, Ph.D.
Chair, State Committee of Marital and Family Therapists



TERESA LONEY, Psy.D.
Member, State Committee of Marital and Family Therapists



LOREE KESSLER, M.P.A.
Executive Director, State Committee of Marital and Family Therapists



JULIET MEE
Non-Voting Education Member, Board of Therapeutic Massage

State Committee of Marital and Family Therapists*

Kingsley, Elizabeth, Ph.D., chair, Lake Winnebago, Jan. 26, 2006;

Estes, Robert, M.S., member, Carthage, Jan. 26, 2009;

Loney, Teresa, Psy.D., member, Nevada, Jan. 26, 2005;

Vacancies (3);

Kessler, Loree, M.P.A., executive director.

*\$50 per diem.

Board of Therapeutic Massage

3605 Missouri Blvd., PO Box 1335, Jefferson City 65102
Telephone: (573) 522-6277 / FAX: (573) 751-0735
TT: (800) 735-2966 / Voice Relay: (800) 735-2466
www.pr.mo.gov/massage.asp
Email: massagether@pr.mo.gov

The Board of Therapeutic Massage was created in 1998 to enforce Chapter 324 RSMo, and regulate individuals practicing massage therapy or operating a massage therapy business. Individuals must be licensed to use the terms "massage," "body work" or any of their synonyms on any sign or on other form of advertising.

Duties of board: License, regulate, investigate consumer complaints and discipline of those subject to license requirements, approve instructors of massage therapy schools/programs, investigate complaints about those practicing without a license and conduct inspections of the massage therapy businesses.

Number of licensed professionals and entities (2008): 6,093

Board composition: Eight members (serving four-year terms): six massage therapists, one non-voting member from the massage education community and one public member.

Associations: Federation of State Massage Therapy Boards (FSMTB).



LOREE KESSLER, M.P.A.
Executive Director, Board of Therapeutic Massage

Board of Therapeutic Massage*

Snedden, Kevin W., chair, Kearney, June 17, 2006;

Brodecker, Renate, member, Eldon, June 17, 2007;

Mee, Juliet, non-voting education member, Springfield, June 17, 2003;

Nelson, Carl, member, St. Joseph, June 17, 2010;

Standley, Dawn, member, Osage Beach, June 17, 2011;

Vacancies (3);

Kessler, Loree, M.P.A., executive director.

* \$50 per diem.

Missouri State Board of Nursing

3605 Missouri Blvd., PO Box 656, Jefferson City 65102
Telephone: (573) 751-0681 / FAX: (573) 751-0075
TT: (800) 735-2966 / Voice Relay: (800) 735-2466
www.pr.mo.gov/nursing.asp
Email: nursing@pr.mo.gov

The Missouri State Board of Nursing was created in 1909 to enforce Chapter 335, RSMo, and regulate registered nurses (RN), licensed practical nurses (L.P.N.), and advanced practice registered nurses (APRNs).

Duties of board: License, regulate, investigate consumer complaints and discipline of those



CHARLOTTE YORK, L.P.N.
President, Missouri State Board of Nursing



LORI SCHEIDT, B.S.
Executive Director, Missouri State Board of Nursing



LISA GREEN, Ph.D. (C), R.N.
Member, Missouri State Board of Nursing



ADRIENNE ANDERSON FLY, J.D.
Public Member, Missouri State Board of Nursing



AUTUMN HOOPER, R.N.
Member, Missouri State Board of Nursing



AUBREY MONCRIEF, C.R.N.A.
Member, Missouri State Board of Nursing



DEBORAH WAGNER, R.N.
Member, Missouri State Board of Nursing



RHONDA SHIMMENS, R.N., B.S.N., C
Member, Missouri State Board of Nursing

subject to board supervision; investigate complaints about those practicing without a license. The board also prescribes minimum standards for nursing education programs, provides surveys of nursing programs and accredits nursing programs.

Number of licensed professionals (2008): 115,960

Board composition: Nine members (serving four-year terms): five registered professional nurses (R.N.), two licensed practical nurses (L.P.N.), one other nurse and one public member.

Associations: National Council of State Boards of Nursing (N.C.S.B.N.).

Missouri Board of Nursing*

- York, Charlotte, L.P.N.,** president, Sikeston, June 1, 2005;
- Hooper, Autumn, R.N.,** vice president, St. Louis, June 1, 2009;
- Fly, Adrienne Anderson, J.D.,** public member, St. Louis, June 1, 2011;
- Green, Lisa A., Ph.D., (C), R.N.,** member, St. Louis, June 1, 2012;
- Moncrief, Aubrey F., C.R.N.A., R.N.,** member, Osage Beach, June 1, 2012;
- Shelton, Ann, Ph.D., R.N.,** member, O'Fallon, June 1, 2013;

Shimmens, Rhonda, R.N., B.S.N., C, member, Jefferson City, June 1, 2012;

Wagner, Deborah, R.N., member, Kirkwood, June 1, 2010;

Vacancies (2);

Scheidt, Lori, B.S., executive director.

*\$50 per diem.

Missouri Board of Occupational Therapy

3605 Missouri Blvd., PO Box 1335, Jefferson City 65102
Telephone: (573) 751-0877 / FAX: (573) 526-3489
TT: (800) 735-2966 / Voice Relay: (800) 735-2466
www.pr.mo.gov/octherapy.asp
Email: ot@pr.mo.gov

The Missouri Board of Occupational Therapy was created in 1997 to enforce Chapter 324.050-324.089, RSMo, and regulate individuals engaged in the practice of occupational therapy (occupational therapists, occupational therapy assistants).

Duties of board: License, regulate, investigate consumer complaints and discipline of those subject to board supervision; investigate complaints about those practicing without a license.

Number of licensed professionals (2008): 3,559



JAMES E. BUREMAN, O.D.
President
State Board of Optometry



CATHY L. FRIER, O.D.
Vice President
State Board of Optometry



CHRISTY FOWLER, O.D.
Secretary
State Board of Optometry



MICHAEL L. NICHOLS, O.D.
Member
State Board of Optometry



DAVID LACKEY, O.T.
Chair, Missouri Board of Occupational Therapy



PEGGY GETTEMEIER, O.T.A.
Public Member, Missouri Board of Occupational Therapy



VANESSA BEAUCHAMP
Executive Director, Missouri Board of Occupational Therapy



DANNY NESTLEROAD, O.D.
Member
State Board of Optometry

Board composition: Six members (serving three-year terms): three occupational therapists, one occupational therapy assistant and two public members.

Missouri Board of Occupational Therapy*

Lackey, David, O.T., chair, Jefferson City, Jan. 23, 2006;

Cozean, Nichole, O.T.R./L., member, Sikeston, Dec. 11, 2007;

Gettemeier, Peggy, O.T.A., member, Ferguson, Dec. 11, 2006;

Martinez, Raquel, public member, Kansas City, Dec. 11, 2007;

Vacancies (2);

Beauchamp, Vanessa, executive director.

* \$50 per diem.

State Board of Optometry

3605 Missouri Blvd., PO Box 1335, Jefferson City 65102
Telephone: (573) 751-0814 / FAX: (573) 751-8216
TT: (800) 735-2966 / Voice Relay: (800) 735-2466
www.pr.mo.gov/optometrists.asp
Email: optometry@pr.mo.gov

The State Board of Optometry was created in 1921 to enforce Chapter 336 RSMo, and regulate optometrists.



DAYNA M. STOCK
Public Member
State Board of Optometry



BRIAN BARNETT
Executive Director
State Board of Optometry

Duties of board: License, regulate, investigate consumer complaints and discipline of those subject to board supervision; investigate complaints about those practicing without a license.

Number of licensed professionals (2008): 1,287

Board composition: Six members (serving five-year terms): five doctors of optometry and one public member.

Associations: Associations of Regulatory Boards of Optometry (ARBO).

State Board of Optometry*

Bureman, James E., O.D., president, Springfield, June 30, 2011;



JAMES D. RIDDLE, R.Ph.
President
Missouri Board of Pharmacy



BARBARA A. BILEK, Pharm. D.
Vice President
Missouri Board of Pharmacy



MELISSA R. GRAHAM, R.Ph.
Member
Missouri Board of Pharmacy



PAMELA MARSHALL, R.Ph.
Member
Missouri Board of Pharmacy



ANITA K. PARRAN
Public Member
Missouri Board of Pharmacy



GARY F. SOBOCINSKI, R.Ph.
Member
Missouri Board of Pharmacy



ELAINA M. WOLZAK, R.Ph.
Member
Missouri Board of Pharmacy



KIMBERLY GRINSTON
Executive Director
Missouri Board of Pharmacy

Frier, Cathy L., O.D., vice president, El Dorado Springs, June 30, 2009;

Fowler, Christy, O.D., secretary, Cape Girardeau, June 30, 2008;

Nichols, Michael L., O.D., member, Columbia, June 30, 2010;

Nestleroad, Danny, O.D., member, Monett, June 30, 2007;

Stock, Dayna M., public member, St. Louis, Aug. 16, 2007;

Barnett, Brian, executive director.

*\$50 per diem.

Board of Pharmacy

3605 Missouri Blvd., PO Box 625, Jefferson City 65102
Telephone: (573) 751-0091 / FAX: (573) 526-3464
TT: (800) 735-2966 / Voice Relay: (800) 735-2466
www.pr.mo.gov/pharmacists.asp
Email: pharmacy@pr.mo.gov

The Board of Pharmacy was created in 1909 to enforce Chapter 338 RSMo and regulate pharmacists, pharmacies, drug distributors, and pharmacy technicians.

Duties of board: License, regulate, investigate consumer complaints and discipline of those subject to board supervision; investigate complaints about those practicing without a license. Also, conducting inspections of the establishments.

Number of licensed professionals and entities (2008): 29,082

Board composition: Seven members (serving five-year terms): six licensed pharmacists and one public member.

Associations: National Association of Boards of Pharmacy (NABP), Missouri Pharmacy Association, Council on Licensure, Enforcement and Regulation (CLEAR).

Board of Pharmacy*

Riddle, James D., R.Ph., president, Cape Fair, April 25, 2012;

Bilek, Barbara A., Pharm. D., vice president, St. Joseph, June 1, 2012;

Graham, Melissa R., R.Ph., member, Charleston, Mar. 11, 2009;

Marshall, Pamela, R.Ph., member, St. Louis, Dec. 22, 2008;

Parran, Anita K., public member, Kansas City, April 6, 2010;

Sobocinski, Gary F., R.Ph., member, Bridgeton, Jan. 29, 2009;

Wolzak, Elaina M., R.Ph., member, Blue Springs, Feb. 26, 2009;

Grinston, Kimberly, executive director.

*\$50 per diem.



HARRY JOHN VISSER, D.P.M.
President, State Board of Podiatric Medicine



TERRENCE G. KLAMET, D.P.M.
Vice President, State Board of Podiatric Medicine



LORENE VAN DAM, D.P.M.
Secretary, State Board of Podiatric Medicine



JEFFERY APPLEMAN, D.P.M.
Member State Board of Podiatric Medicine

State Board of Podiatric Medicine

3605 Missouri Blvd., PO Box 423, Jefferson City 65102
Telephone: (573) 751-0873 / FAX: (573) 751-1155
TT: (800) 735-2966 / Voice Relay: (800) 735-2466
www.pr.mo.gov/podiatrists.asp
Email: podiatry@pr.mo.gov

The State Board of Podiatric Medicine was created in 1945 to enforce Chapter 330 RSMo, and regulate podiatrists.

Mission: To ensure safety, hygiene and fair treatment of consumers in the practice of podiatric medicine

Duties of board: License, regulate, investigate consumer complaints and discipline of those subject to board supervision; investigate complaints about those practicing without a license.

Number of licensed professionals (2008): 294

Board composition: Five members (serving four-year terms): Four licensed doctors of surgical podiatric medicine and one public member.

Associations: Federation of Podiatric Medical Examiners, Missouri Podiatric Medical Association, Federation of Associations of Regulatory Boards (FARB), Council on Licensure, Enforcement and Regulation (CLEAR).

State Board of Podiatric Medicine*

Visser, Harry John, D.P.M., president, Town and Country, July 1, 2008;

Klamet, Terrence G., D.P.M., vice president, Wildwood, July 1, 2009;

Van Dam, Lorene, D.P.M., secretary, Springfield, July 1, 2007;

Appleman, Jeffery, D.P.M., member, Jackson, July 1, 2010;

Riney, Lois, public member, Ashland, Aug. 16, 2006;

Dunn, Becky, executive director.

*\$70 per diem.



LOIS RINEY
Public Member, State Board of Podiatric Medicine



BECKY DUNN
Executive Director, State Board of Podiatric Medicine

State Board of Private Investigator Examiners

3605 Missouri Blvd., PO Box 1335, Jefferson City 65102
Telephone: (573) 522-7744 / FAX: (573) 526-0661
TT: (800) 735-2966 / Voice Relay: (800) 735-2466
www.pr.mo.gov/pi.asp
Email: pi@pr.mo.gov

The Board of Private Investigator Examiners was created in 2007 to enforce Chapter 324 RSMo, and regulate private investigators, private investigator agencies.

Duties of board: License, regulate, investigate consumer complaints and discipline of those subject to board supervision; investigate complaints about those practicing without a license.

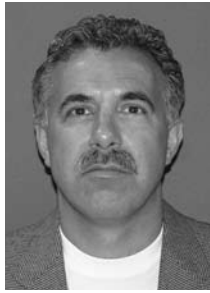
Number of licensed professionals: 0 (will begin licensure in February 2010).

Board composition: Five members (serving two-year terms): Three licensed private investigators, two public members.

Associations: International Association of Security & Investigative Regulators (IASIR), Council on Licensure, Enforcement and Regulation (CLEAR), Federation of Associations of Regulatory Boards.



DWIGHT McNEIL
Chair, Board of Private Investigator Examiners



DOUGLAS MITCHELL
Vice Chair, Board of Private Investigator Examiners



FRANCIS REY
Member, Board of Private Investigator Examiners



KENNETH MCGHEE
Public Member, Board of Private Investigator Examiners

State Board of Private Investigator Examiners*

McNeil, Dwight, chair, Ozark, March 4, 2011;
Mitchell, Douglas, vice chair, Warrensburg, March 4, 2011;
Rey, Francis (Chris), member, St. Louis, March 4, 2012;
McGhee, Kenneth, public member, Hazelwood, March 4, 2011;
Vacancy (1);
Groose, Pamela, executive director.

*\$50 per diem.

State Committee of Psychologists

3605 Missouri Blvd., PO Box 1335, Jefferson City 65102
Telephone: (573) 751-0099 / FAX: (573) 526-0661
TT: (800) 735-2966 / Voice Relay: (800) 735-2466
www.pr.mo.gov/psychologists.asp
Email: scop@pr.mo.gov

The State Committee of Psychologists was created in 1977 to enforce Chapter 337 RSMo, and regulate psychologists and provisional licensed psychologists.

Duties of committee: License, regulate, investigate consumer complaints and discipline of those subject to board supervision; investigate complaints about those practicing without a license.

Number of licensed professionals (2008): 1,760

Committee composition: Eight members (serving five-year terms): seven psychologists and one public member.

Associations: Association of State and Provincial Psychology Boards (ASPPB), Federation of Associations of Regulatory Boards (FARB), Council on Licensure, Enforcement and Regulation (CLEAR).

State Committee of Psychologists*

Johnstone, George (Brick), Ph.D., chair, Columbia, Aug. 24, 2008;
Driver, Jerrell, Ph.D., member, Jackson, August 28, 2008;
Kinder, Mark, Ph.D., member, Cape Girardeau, August 28, 2011;



PAMELA GROOSE
Executive Director, Board of Private Investigator Examiners



GEORGE (Brick) JOHNSTONE, Ph.D., Chair, State Committee of Psychologists



JERRELL DRIVER, Ph.D.
Member, State Committee of Psychologists



MARK KINDER, Ph.D.
Member, State Committee of Psychologists



PAMELA GROOSE
Executive Director, State Committee of Psychologists



SHARON KEATING
Chair, Missouri Real Estate Commission



CHARLES DAVIS
Vice Chair, Missouri Real Estate Commission



DORIS CARLIN
Member, Missouri Real Estate Commission



TWILA HILLME
Member, Missouri Real Estate Commission



JANET W. HUNT
Member, Missouri Real Estate Commission



CHARLES MISKO
Public Member, Missouri Real Estate Commission



ROSEMARY VITALE
Member, Missouri Real Estate Commission



JANET CARDER
Executive Director, Missouri Real Estate Commission

Vacancies (5);
Groose, Pamela, executive director.

* \$50 per diem.

Missouri Real Estate Commission

3605 Missouri Blvd., PO Box 1339, Jefferson City 65102
Telephone: (573) 751-2628 / FAX: (573) 751-2777
TT: (800) 735-2966 / Voice Relay: (800) 735-2466
www.pr.mo.gov/realestate.asp
Email: realestate@pr.mo.gov

The Missouri Real Estate Commission was created in 1941 to enforce Chapter 339 RSMo, and regulate real estate brokers and salespeople.

Duties of commission: License, regulate, investigate consumer complaints and discipline of those subject to board supervision; investigate complaints about those practicing without a license. Also, auditing real estate escrow accounts to verify proper handling of buyers' earnest money.

Number of licensed professionals (2008): 53,186

Commission composition: Seven members (serving five-year terms): Six with at least 10 years experience as a real estate broker, one public member.

Missouri Real Estate Commission*

Keating, Sharon, chair, Jefferson City, Oct. 16, 2012;

Davis, Charles, vice chair, Chesterfield, Oct. 16, 2010;

Carlin, Doris, member, Joplin, Oct. 16, 2010;
Hillme, Twila, member, Springfield, Oct. 16, 2011;

Hunt, Janet, member, St. Louis, Oct. 16, 2008;
Misko, Charles, public member, Creve Coeur, Oct. 16, 2007;

Vitale, Rosemary, member, Kansas City, Oct. 16, 2010;

Carder, Janet, executive director.

* \$75 per diem.

Missouri Real Estate Appraisers Commission*

3605 Missouri Blvd., PO Box 1335, Jefferson City 65102
Telephone: (573) 751-0038 / FAX: (573) 526-3489
TT: (800) 735-2966 / Voice Relay: (800) 735-2466
www.pr.mo.gov/appraisers.asp
Email: reacom@pr.mo.gov

The Missouri Real Estate Appraisers Commission was created in 1990 to enforce Chapter 339.500-339.549 RSMo, and regulate real estate appraisers.

Duties of commission: License, regulate, investigate consumer complaints and discipline of those subject to board supervision; investigate complaints about those practicing without a license.

Number of licensed professionals (2008): 2,717



DARRYL (Skip) KNOPF
Member, Missouri Real Estate Appraisers Commission



SHAWN T. ORDWAY
Member, Missouri Real Estate Appraisers Commission



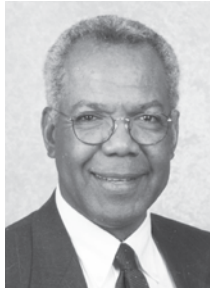
VANESSA BEAUCHAMP
Executive Director, Missouri Real Estate Appraisers Commission



CINDY SEYER, R.R.T.
Chair, Missouri Board for Respiratory Care



ARLENE HOGUE
Vice Chair, Missouri Board for Respiratory Care



FERNANDO MCGREGOR, R.R.T.
Secretary, Missouri Board for Respiratory Care



ROBERT CRAWFORD, R.R.T.
Member, Missouri Board for Respiratory Care



ROSEMARY HOGAN, R.R.T.
Member, Missouri Board for Respiratory Care

Commission composition: Seven members (serving three-year terms): Six licensed appraisers and one public member.

Missouri Real Estate Appraisers Commission*

Jones, Janice, member, Lee's Summit, Sept. 12, 2009;

Knopf, Darryl (Skip), member, St. Louis, Sept. 12, 2006;

Ordway, Shawn T., member, Jefferson City, Sept. 12, 2007;

Molendorp, Julie, member, Belton, Sept. 12, 2008;

Vacancies (3);
Beauchamp, Vanessa, executive director.

* \$50 per diem.

Missouri Board for Respiratory Care

3605 Missouri Blvd., PO Box 1335, Jefferson City 65102
Telephone: (573) 522-5864 / FAX: (573) 526-3469
TT: (800) 735-2966 / Voice Relay: (800) 735-2466
www.pr.mo.gov/respiratorycare.asp
Email: rcp@pr.mo.gov

The Missouri Board for Respiratory Care was created in 1989 to enforce Chapter 334.800-334.930 RSMo, and regulate individuals engaged in the practice of respiratory care (respiratory therapists).



VANESSA BEAUCHAMP
Executive Director, Missouri Board for Respiratory Care

Duties of board: License, regulate, investigate consumer complaints and discipline of those subject to board supervision; investigate complaints about those practicing without a license.

Number of licensed professionals (2008): 3,989

Board composition: Seven members (serving three-year terms): four respiratory care practitioners, one physician, one hospital administrator and one public member.

Missouri Board for Respiratory Care*

Seyer, Cindy, R.R.T., chair, Cape Girardeau, April 2, 2005;

Hogue, Arlene, vice chair/public member, St. Charles, April 3, 2010;



JENISE COMER, L.C.S.W.
Chair, State Committee for Social Workers



HAL AGLER, L.C.S.W.
Member, State Committee for Social Workers



TERRI MARTY, A.C.S.W., L.C.S.W., Member, State Committee for Social Workers



LAURA NEAL, M.S.W., M.Ph., L.C.S.W., Member, State Committee for Social Workers

McGregor, Fernando, R.R.T., secretary, Independence, April 13, 2007;

Crawford, Robert, R.R.T., member, Hannibal, April 3, 2008;

Hogan, Rosemary, R.R.T., member, Columbia, April 3, 2006;

Vacancies (2);
Beauchamp, Vanessa, executive director.

* \$50 per diem.

State Committee for Social Workers

3605 Missouri Blvd., PO Box 1335, Jefferson City 65102
Telephone: (573) 751-0885 / FAX: (573) 526-3489
TT: (800) 735-2966 / Voice Relay: (800) 735-2466
www.pr.mo.gov/socialworkers.asp
Email: lcsww@pr.mo.gov

The State Committee for Social Workers was created in 1990 to enforce Chapter 337 RSMo, and regulate licensed clinical social workers (LCSW), licensed master social workers, licensed advanced macro social workers and licensed baccalaureate social workers.

Duties of committee: License, regulate, investigate consumer complaints and discipline of those subject to board supervision; investigate complaints about those practicing without a license.

Number of licensed professionals (2008): 5,188

Committee composition: Ten members (serving four-year terms): six licensed clinical social worker, one licensed master social workers, one licensed baccalaureate social worker, one licensed advanced macro social worker and one public member. Any time there is a vacancy on the board, Missouri law requires the president of the National Association of Social Workers Missouri chapter to submit the names of five candidates to the director of Professional Registration.

State Committee for Social Workers*

Comer, Jenise, L.C.S.W., chair, Kansas City, Oct. 23, 2007;

Miller, Kathie, M.S.W., L.C.S.W., secretary, Dexter, Oct. 23, 2008;



JANE OVERTON
Public Member, State Committee for Social Workers



TOM REICHARD
Executive Director, State Committee for Social Workers

Agler, Hal, L.C.S.W., member, Springfield, Oct. 23, 2007;

Marty, Terri, A.C.S.W., L.C.S.W., member, Fulton, Oct. 28, 2008;

Neal, Laura, M.S.W., M.Ph., L.C.S.W., member, Columbia, Oct. 23, 2009;

Overton, Jane, public member, Kansas City, Oct. 2, 2005;

Vacancies (4);
Reichard, Tom, executive director.

* \$70 per diem.

Office of Tattooing, Body Piercing and Branding

3605 Missouri Blvd., PO Box 1335, Jefferson City 65102
Telephone: (573) 526-8288 / FAX: (573) 526-3489
TT: (800) 735-2966 / Voice Relay: (800) 735-2466
www.pr.mo.gov/tattooing.asp
Email: tattoo@pr.mo.gov

The Office of Tattooing, Body Piercing and Branding was created in 1998 to enforce Chapter 324.520-324.526 RSMo, and regulate tattooists, body piercers, branders and their establishments.

Mission: Ensure hygiene, safety and sanitary conditions are used by these professionals and their establishments.

Duties of office: License, regulate, investigate consumer complaints and discipline of those sub-



LINDA HICKMAN-FOUNTAIN,
D.V.M., Chair, Missouri
Veterinary Medical Board



DAVID GOURLEY, D.V.M.
Vice Chair, Missouri Veterinary
Medical Board



CHARLES BARRY, D.V.M.
Member, Missouri Veterinary
Medical Board



CAROL RYAN, D.V.M.
Member, Missouri Veterinary
Medical Board



OWEN SMITH
Public Member, Missouri
Veterinary Medical Board



TAYLOR WOODS, D.V.M.
Ex officio Member, Missouri
Veterinary Medical Board



DANA HOELSCHER
Executive Director, Missouri
Veterinary Medical Board

ject to board supervision; investigate complaints about those practicing without a license. Also, conducting inspections of the establishments.

Number of licensed professionals and entities (2008): 1,586

About the office: The office is staffed by an executive director and licensing technician. Rather than an oversight board or commission, the office is overseen by the Director of Professional Registration.

Beauchamp, Vanessa, executive director.

Missouri Veterinary Medical Board

3605 Missouri Blvd., PO Box 633, Jefferson City 65102
Telephone: (573) 751-0031 / FAX: (573) 526-2966
TT: (800) 735-2966 / Voice Relay: (800) 735-2466
www.pr.mo.gov/veterinarian.asp
Email: vets@pr.mo.gov

The Missouri Veterinary Medical Board was created in 1904 to enforce Chapter 340 RSMo, and regulate doctors of veterinary medicine, and veterinary technicians.

Duties of board: License, regulate, investigate consumer complaints and discipline of those subject to board supervision; investigate complaints about those practicing without a license.

Number of licensed professionals (2008): 4,524

Board composition: Six members (serving four-year terms): five licensed veterinarians, one of whom is the state veterinarian (an employee of the Missouri Department of Agriculture), who serves as an *ex officio* member of the board, and one public member. No more than three members of the board may belong to the same political party.

Associations: American Association of Veterinary State Boards, Federation of Associations of Regulatory Boards (FARB), Council on Licensure, Enforcement and Regulation (CLEAR).

Missouri Veterinary Medical Board*

Barry, Charles, D.V.M., chair, Warrensburg, August 29, 2008;

Gourley, David, D.V.M., vice chair, Mountain Grove, Aug. 29, 2010;

Hickam-Fountain, Linda, D.V.M., member, Thompson, Aug. 29, 2010;

Ryan, Carol, D.V.M., member, Troy, Aug. 29, 2009;

Smith, Owen, public member, Buffalo, April 29, 2009;

Wood, Taylor, D.V.M., *ex officio* member, California;

Hoelscher, Dana, executive director.

*\$50 per diem.