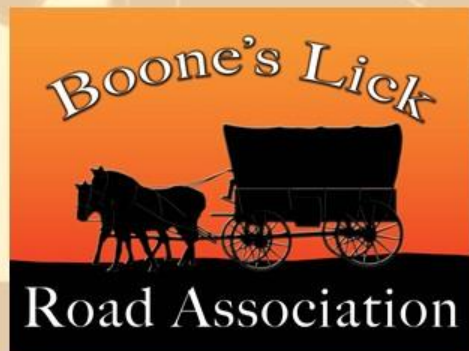




**ALONG THE BOONE'S LICK ROAD:
KEY LINK TO THE WEST**

By David Sapp



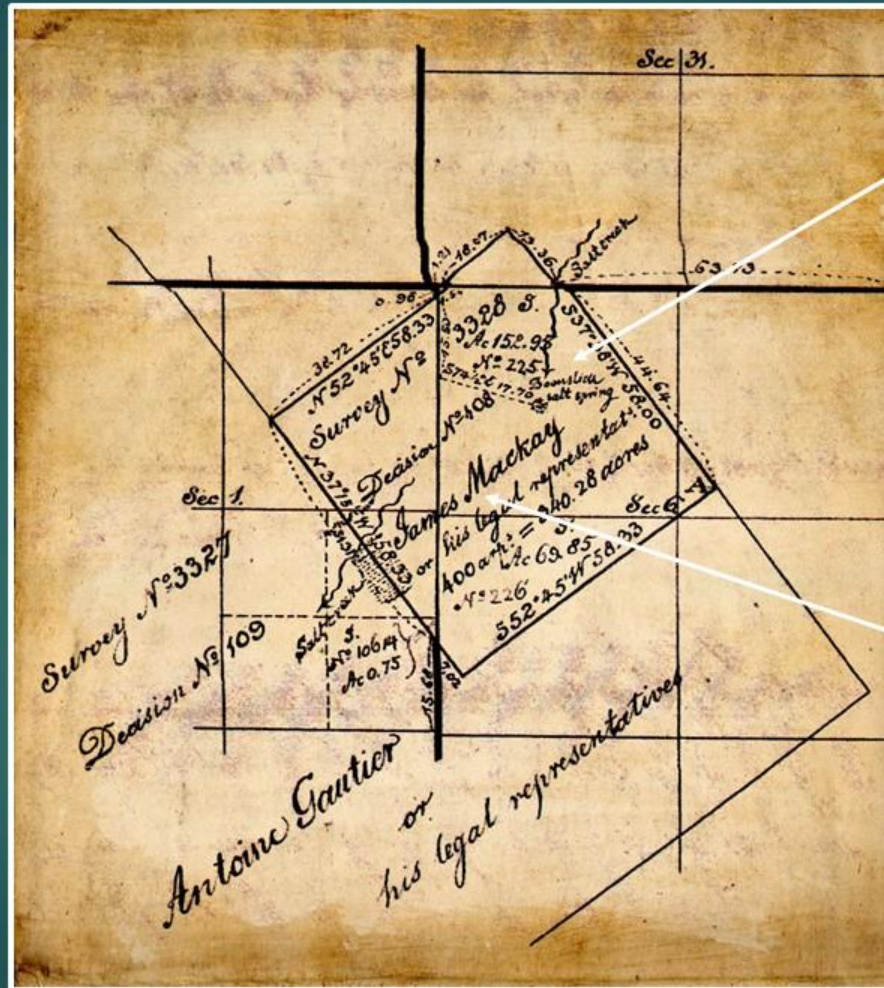
The Boone's Lick Road was not just a local Missouri road

- A major portion of migration into the trans-Mississippi West in the first several decades of the Louisiana Purchase traveled along this route.
- While the river was the first highway into the vast North American continent, overland travel roughly paralleling it dominated in numbers for decades. Large numbers of people and quantities of goods early on required overland travel.
- East-west travel north or south of Missouri developed much more slowly.



James Mackay
Survey of 400
Arpent
Spanish land
grant

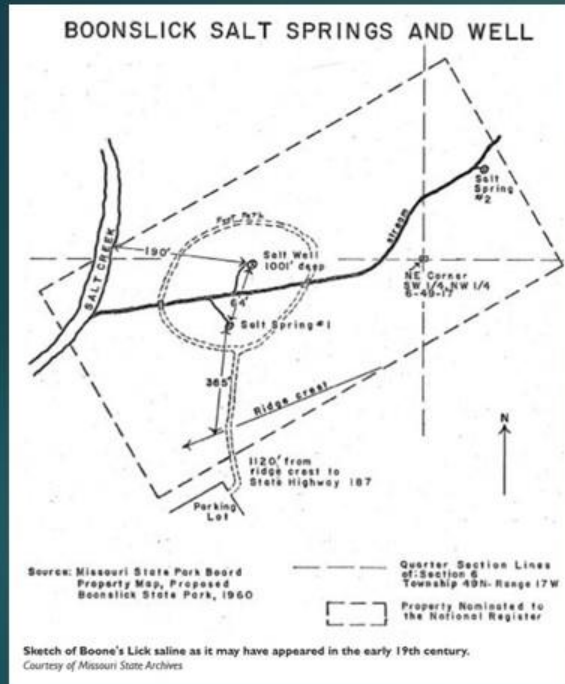
Source: Missouri
State Archives



Bonslieu
salt spring

James Mackay

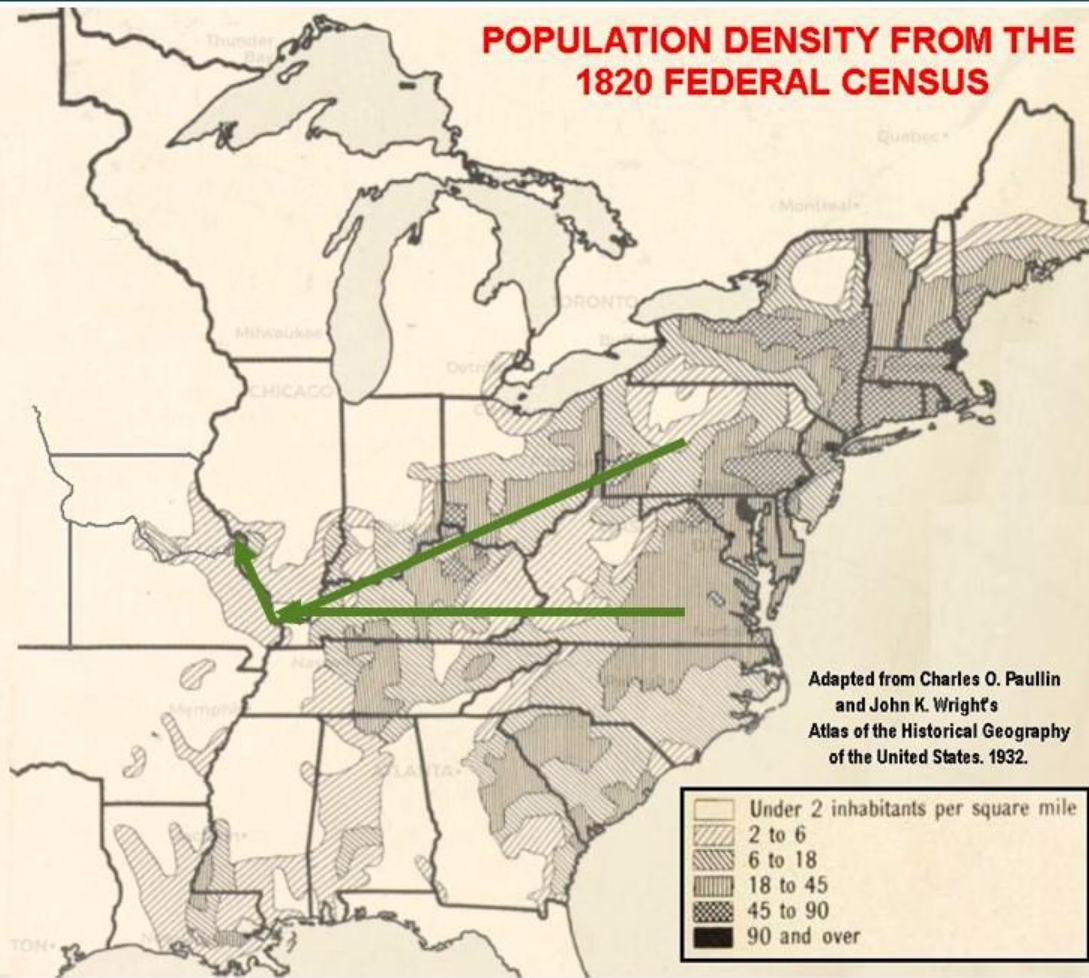
ABOUT BOONE'S LICK



Lynn Morrow, "Boone's Lick in Western Expansion: James MacKay, the Boones, and the Morrisons."

Michael Dickey, "Boone's Lick State Historic Site."

POPULATION DENSITY FROM THE 1820 FEDERAL CENSUS



Louisiana (1812) and Missouri (1821) only states west of the Mississippi as of 1821.

Note the "funnel" effect from the high-density areas east and north down the Ohio River and up the Mississippi to St. Louis and St. Charles.

Very low populations north and south of Missouri.

The Boone's Lick Road was carrying people westward even before 1820.

The Route

First record of the general route

River Runn[ing] to the S. East,²² and nooned it, Saw 3 Elk & Sent a party after them. rained a few drops This Creek I call *flint Creek*, after part of the day proceeded on thro wood land for a Short distance into a plain and on the plain, a few Miles and a branch of *Muddy river*²³ Rung to the left in Some Rich timber land, Crossd a Second Small branch, and then a open rich plain, proceeding, plains very rich to day & points of timber making in as usial. no water except in holes. Saw Elk Encamped on the head water of Loutre made 25 miles to day.

Monday 29 Augt. 1808.

Set out early and proceeded on through an open plain 11 miles to the *Birch fork of Seeder [Cedar] River*,²⁴ in a rich timberd land of about Miles, this creek has more water than usial. Saw Several Elk & fresh Buffalow Sign Several horses much gaded,²⁵ a plenty of water in whols in dreans²⁶ in the plain, all the dreans to day on Muddy & Ceder Rivers, the plain forks one leads to th N. W & the other South to near the Missouri. I sent out 3 hunters they killed Deer, and informed me the Country was handsom to the right & left. here at the Creek I marked a Birch tree Gen. W. Clark 100 m.- after 2 hours proceeded on through a plain 4 miles and passed the main branch of *Seedr [Cedar] Creek* at 5 m[i]l[es]. some water

[24]

in holes rich bottoms Sugar birch lynn Hickory &c. about a mile out & continued through rich wode [wood] land high weeds, oak Hickory &c. &c. and at 7 miles further Encamped on the E. bank of *purche roch [Perce Roche]*²⁷ 15 yds wid[e] Scarcely any water, none running, having passed Several Streams of the Creek, Saw great Sign of Elk Buffalow & Deer encamped—made 23 Miles to day 3 Miles before we Encamped crossed a large fork of Purced roch Creek in the bottom of Which, observed a quantity of Stone coal which had been washed down. I bur[ne]d and found this very good Coal.²⁸ My foot a little better this evening—lost one horse to day.

Tuesday 30th, 1808 Tuseday.

Set out at 7 oClock proceeded on thro Wood land rich Crossed a large fork of *Roche purcy* at 4 Miles, the Main fork at 8 Miles, a West fork near it's forks at 11 Miles, near a Spring and passed over to a branch of *Monotou*²⁹ River 15 M[iles] & one Miles from the S[ai]d. river and nooned it. Crossed a large Indian trail leading S. at the last Creek, Saw much Buffalow Sign, the land of the best 2d. quallity oak Sugar Lynn elm ash Hickory & Some Walnut woods tolerably thick—at this Camp Marked a Hoop out ar[oun]d. 2 Sugar trees Several men sick to day. The pilot says the lands to our left in salt bitter and

[25]

Westward with Dragoons: The [1808] Journal of William Clark

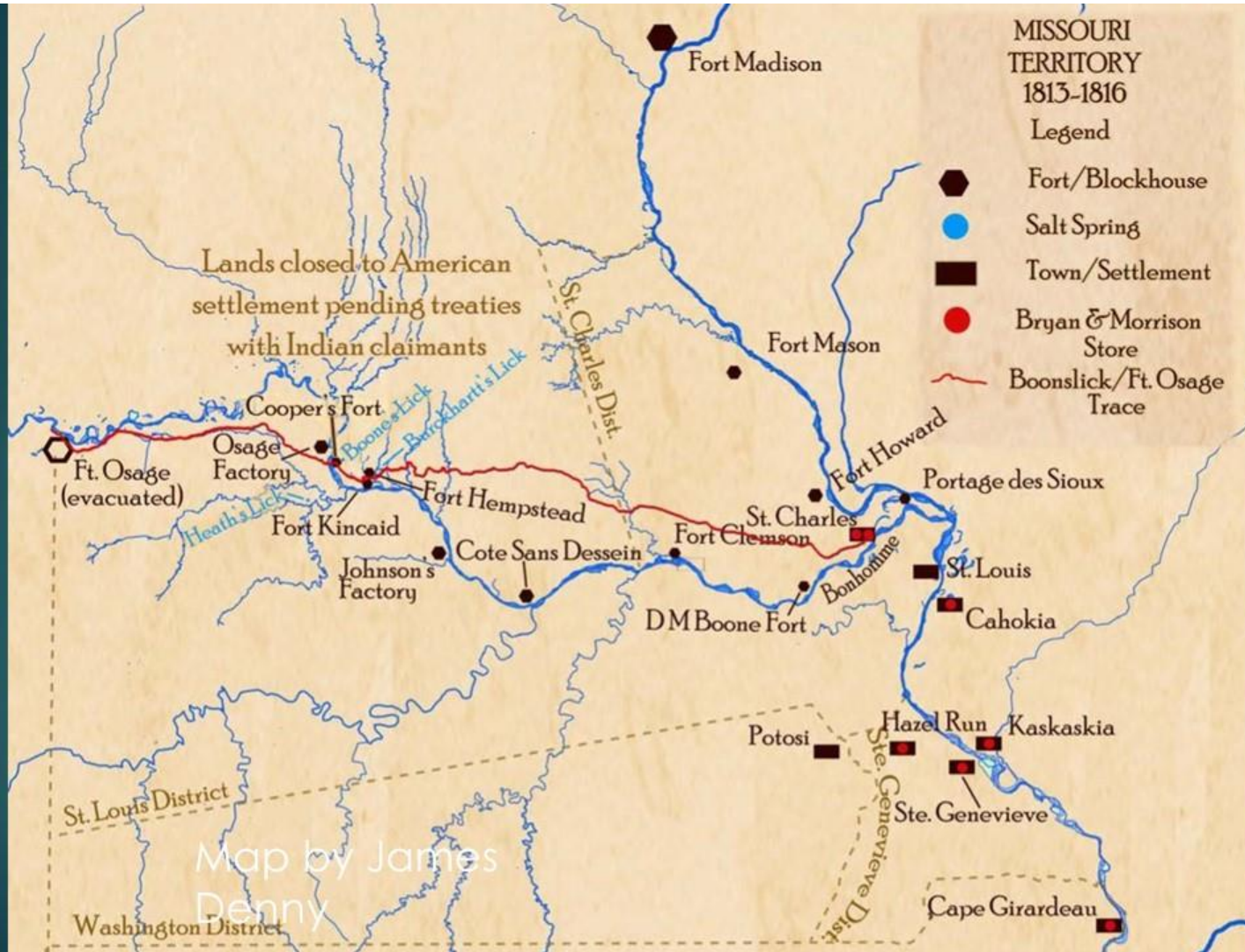


Probable 1808 route of William Clark
and the
St. Charles Dragoons to Fort Osage
-- by James Harlan --

MISSOURI
TERRITORY
1813-1816

Legend

- Fort/Blockhouse
- Salt Spring
- Town/Settlement
- Bryan & Morrison Store
- Boonslick/Ft. Osage Trace



Key Sources for Determining Original Route

From St. Louis to Fort Osage on Missouri.

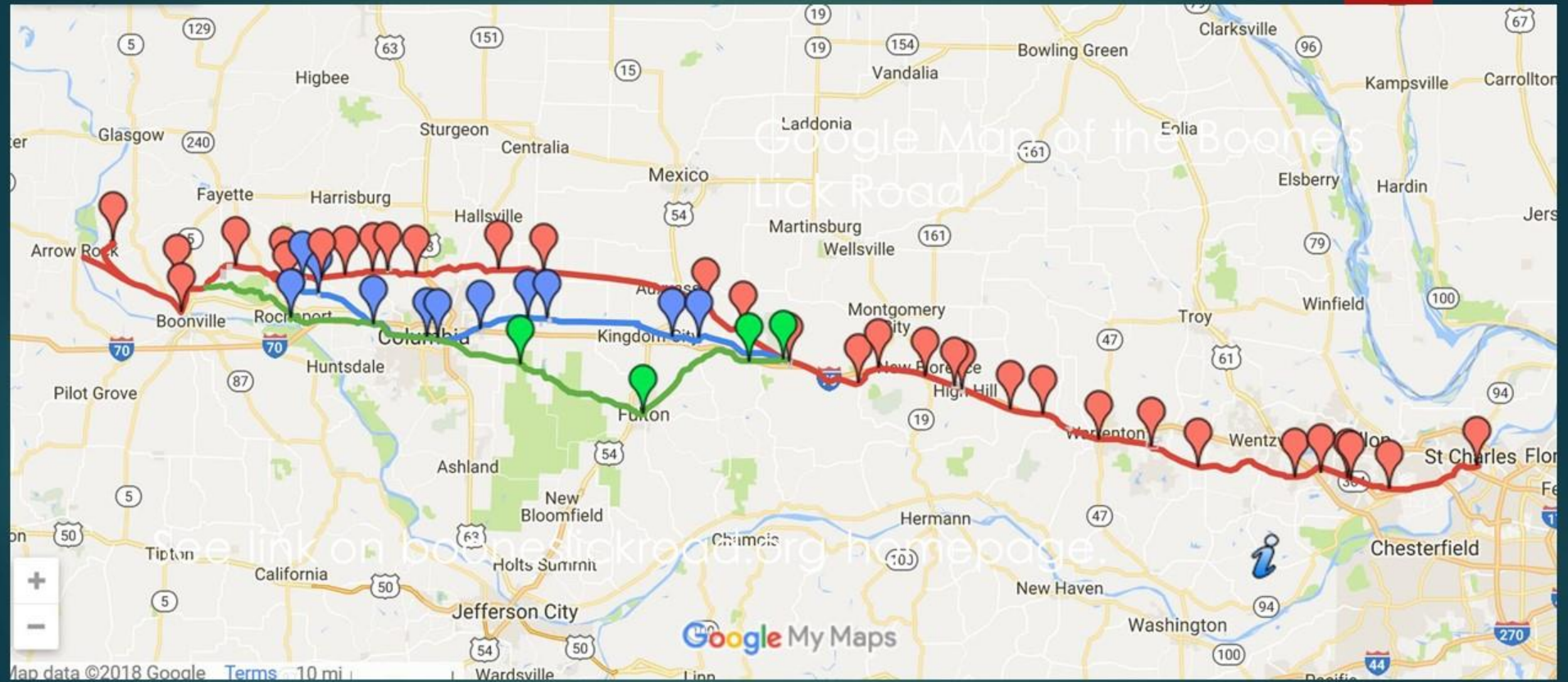
St. Charles	20	Estell's	4
Coonts	9	Grayum's	10
Pond Fort	12	Thrall's	10
Journey's	15	Arnold's	5
Camp Branch	12	Franklin	15
Williamson's	15	Chariton	22
Loutre lick	7	Ferril's ferry	12
Ward's	14	Fort Osage	69
Watson's	6		—
Cedar creek	20	Total	276

Lewis Beck's 1823
Gazetteer

Cross Missouri R. to	
<i>St. Charles</i>	9
Dardenne	12
Pond Fort	8
Journeys	15
Bivins	7
Camp Branch	6
Smith's	10
Williamson's	5
Vanbibber's	7
Fruit's	8
Ward's	5
Grand Prairic	6
Gayheart's	20
Estell's	5
Graham's	10
Sexton's	5
Thrall's	5
-ucas'	4
unkin	13

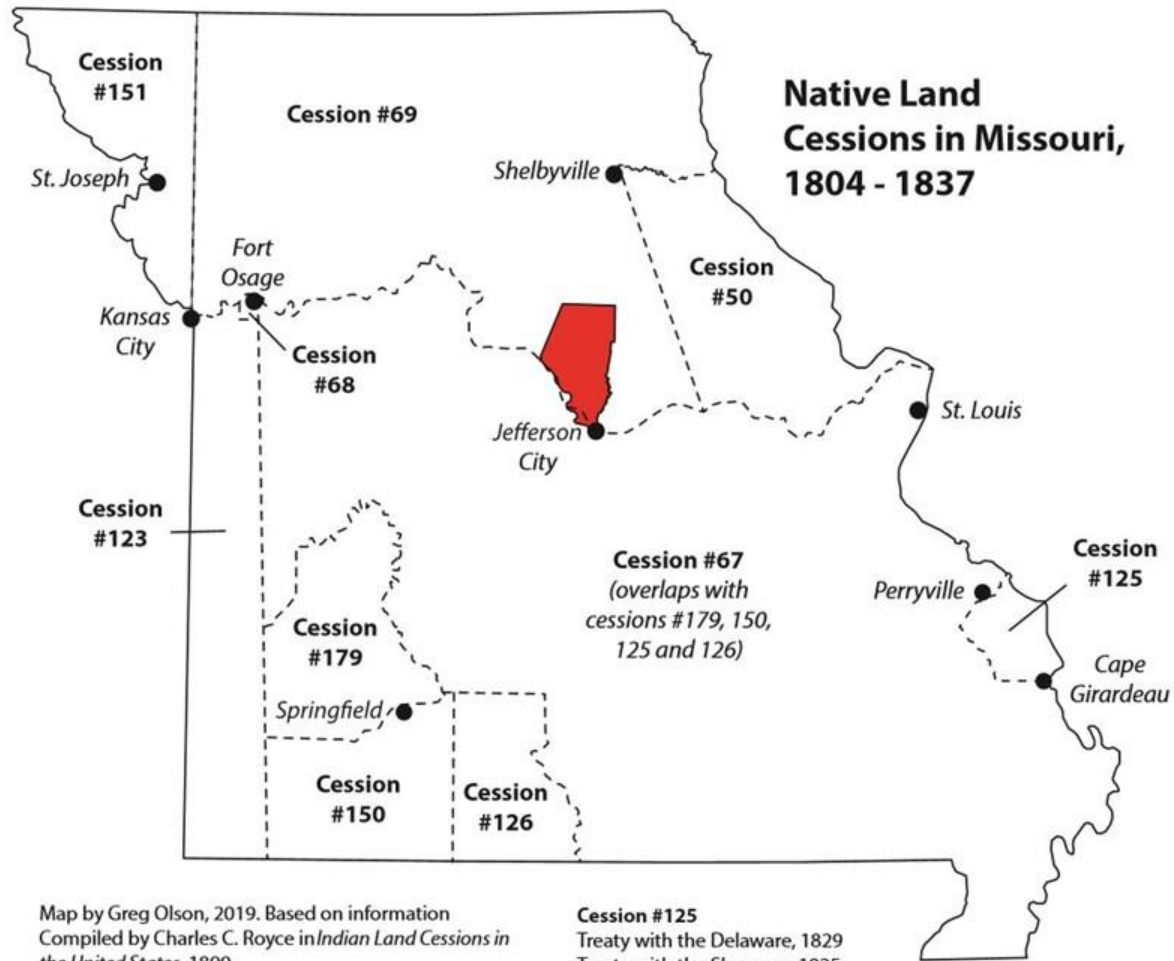
John Melish's 1822 The Traveller's
Directory Through the United
States . . .

Google map of BLR accessible online



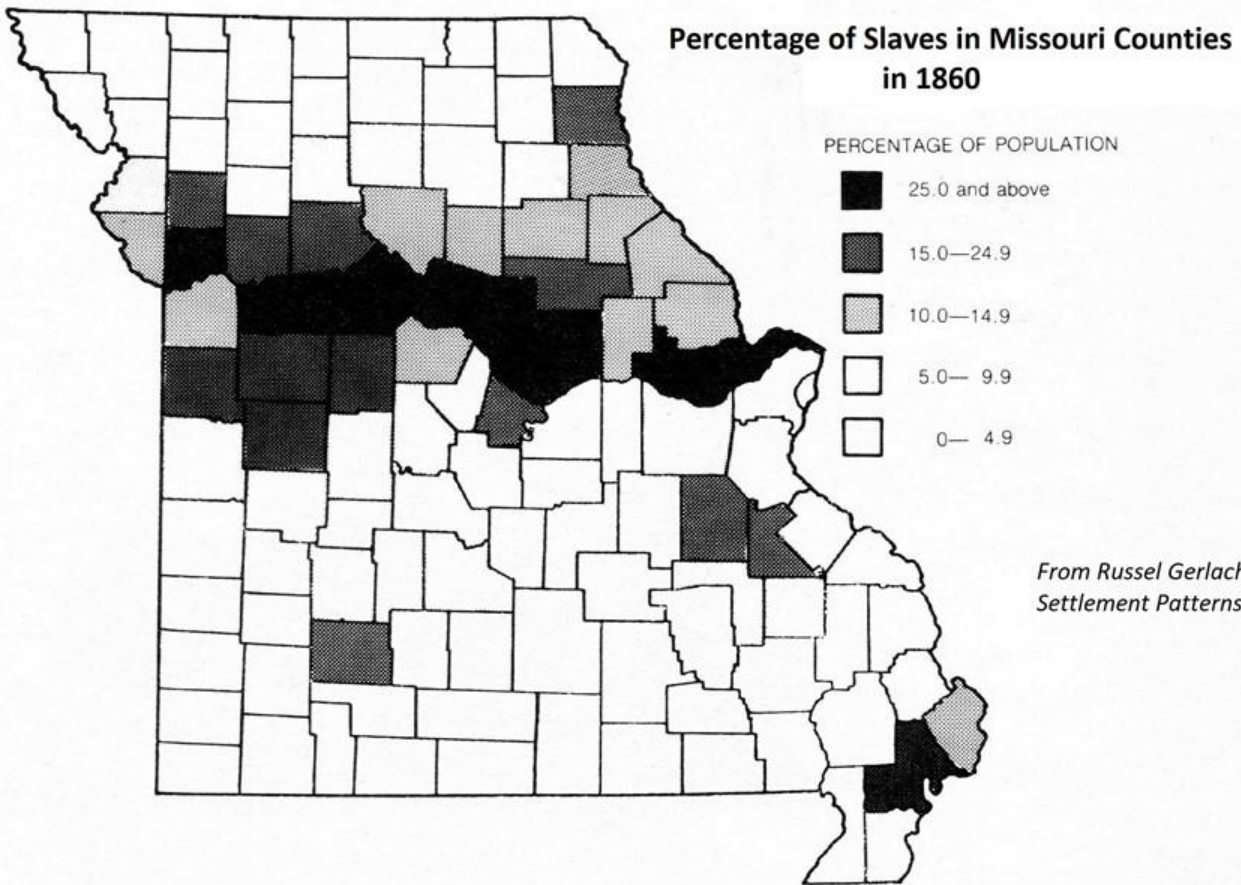
Indigenous Missouri





Map by Greg Olson, 2019. Based on information
Compiled by Charles C. Royce in *Indian Land Cessions in
the United States*, 1899.

Cession #125
Treaty with the Delaware, 1829
Treaty with the Shawnee, 1825
Treaty with the Shawnee, etc., 1832



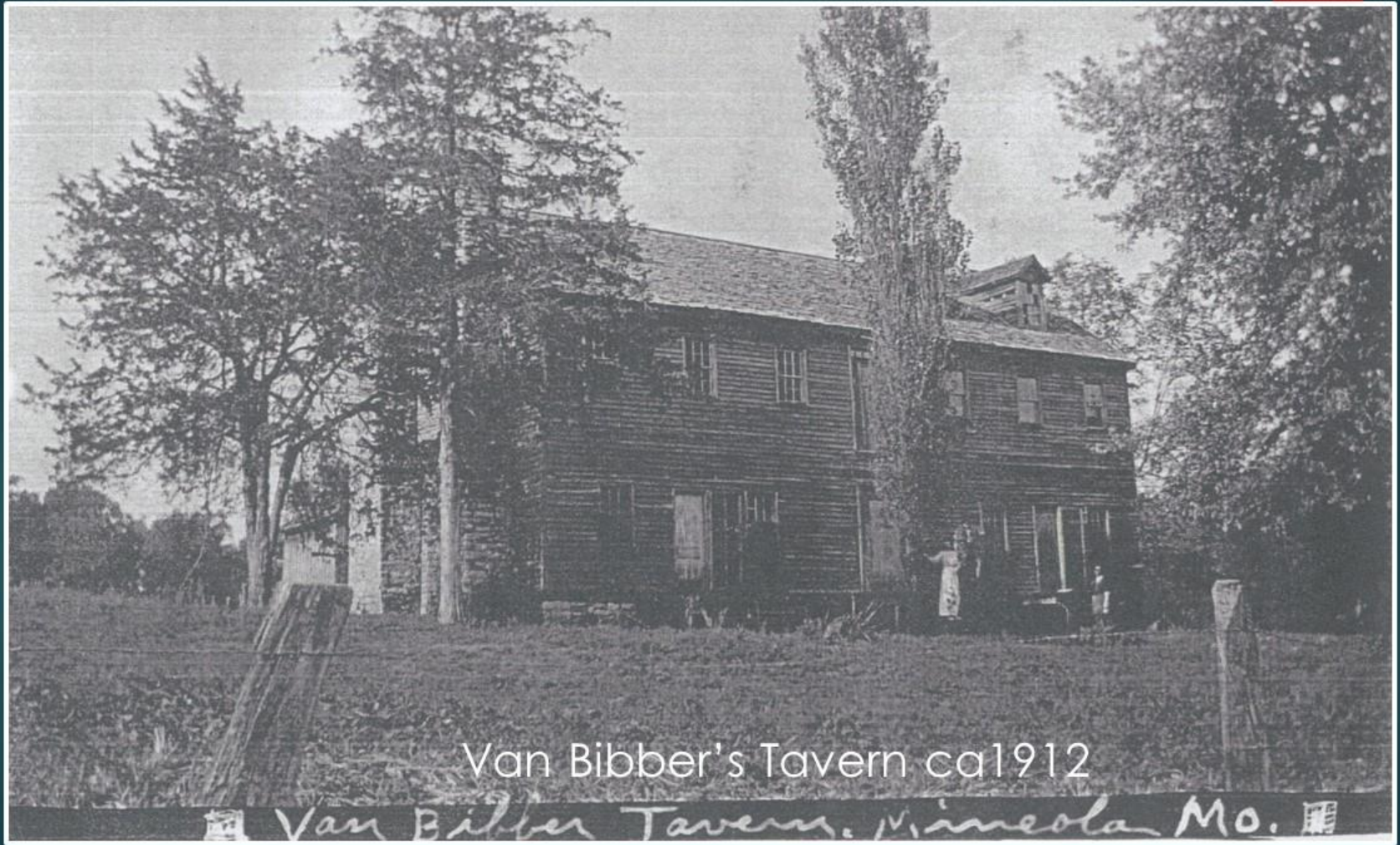
*From Russel Gerlach,
Settlement Patterns in Missouri*

Getting to Boone's Lick A Few Stops Along the Way

- St. Charles
- Loutre Lick/Van
Bibber's
- Fruit's/Williamsburg
- Hinkson's
- Graham's
- Thrall's/Lexington PO
- Franklin

The BLR started in St. Charles

- ▶ DAR markers in St. Louis suggest the BLR started in St. Louis
- ▶ While true that many travelers went through St. Louis to go west, the road to St. Charles was already well established by the 1770s, before Boone's Lick was ever identified
- ▶ St. Charles as administrative district dates from Spanish regime
- ▶ U.S. continued defining St. Charles district north of river after Louisiana Purchase
- ▶ Boone family lived in and had direct ties to St. Charles
- ▶ Daniel Boone appointed syndic in St. Charles 1800 - 1804
- ▶ James MacKay assigned St. Charles district commandant in 1802
- ▶ Nathan Boone discovers MacKay's lick in 1804. Negotiates with MacKay to extract salt beginning in 1805. Teams up with St. Charles businessman, James Morrison
- ▶ Wm. Clark's 1808 trek to Fort Osage left from St. Charles, guided by Nathan Boone
- ▶ Wm. Becknell himself lived in St. Charles from abt 1811



Van Bibber's Tavern ca1912

Van Bibber Tavern, Mineola Mo.



Brown Shoe Company

East Pm bt Sects 26 & 35 T 48 NR 6 N
lbs

560 Crossed Boon's Lick road

4000 Set to 1/4 Sect post

8150 Intersected N & S line 146 links
South of post

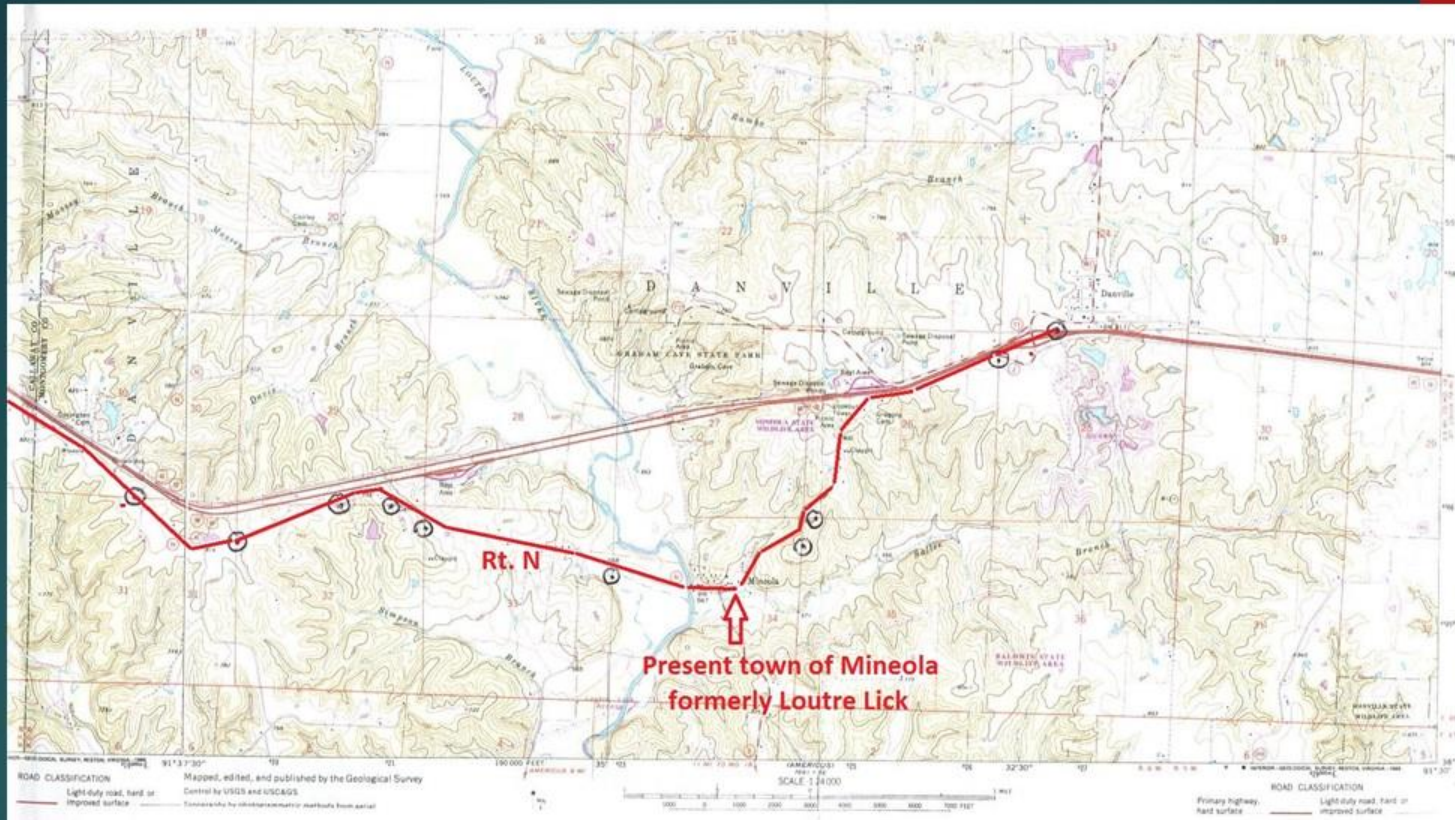
Corrected West

2121 N O 12 in dia

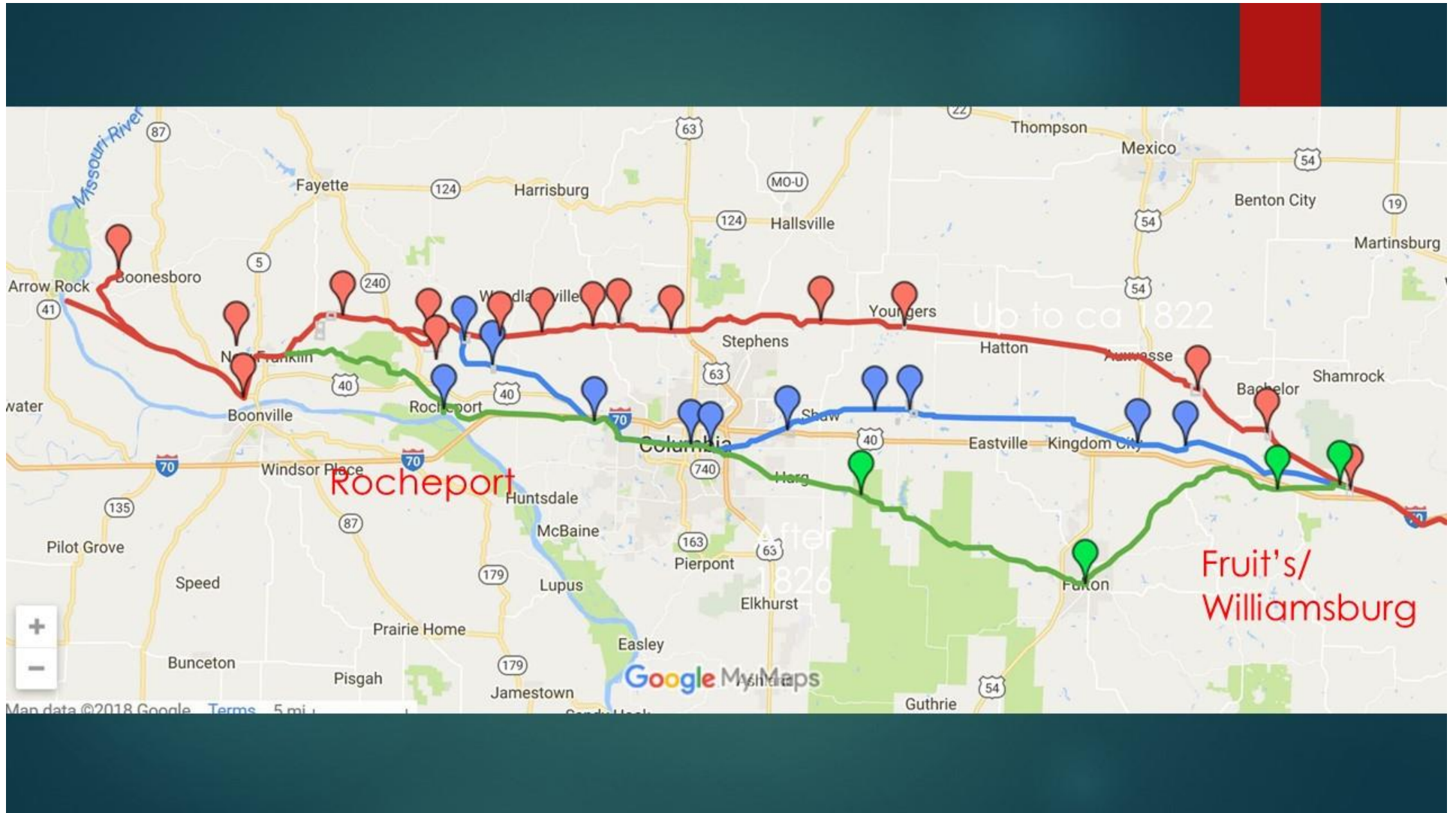
4075 Removed 1/4 Sect post to average
distance fr wh a N O 9 in dia
brs N 59 1/2 N 7 lbs & do 8 in dia brs
S 45 E 14 lbs

4334 O 10 in dia

8150 Land hilly & rocky partly 2nd rate
Timber Oak Hickery &c
Undergrowth Oak Hickery Red bud
&c



1816 Government Survey points on the "Boon's Lick Road" plotted on current topo map in Twp 48N/Range 6W.



December 25th. [1818]

To-day my route was first across the Two Mile Prairie. It derives its name from its average width, commences between two points of timber towards the Missouri, and extends a long distance northward until lost in the Grand Prairie. Here are about a dozen families in log-cabins scattered along its borders. Crossing this prairie in a horse trail, and after riding several miles through timber and brushwood, I came to a Mr. H——'s, where report said breakfast could be obtained, and which offered quite a contrast with the family of last night. The cabin was a single room of most primitive fashion, spice-bush tea was a substitute for coffee, and the flesh of hog, bear, deer, and elk was plenty, of which the landlord showed me enough to supply a regiment. The corn-dodgers were cold and quite unpalatable; for the good woman had never learned the art of cleanliness and cookery. The man was a successful hunter, but probably understood very little of agriculture. I paid fifty cents for these accommodations; for my horse was lame, and refused to eat.

From *Forty Years of Pioneer Life: Memoir of John Mason Peck D.D.*, edited by Rufus Babock.



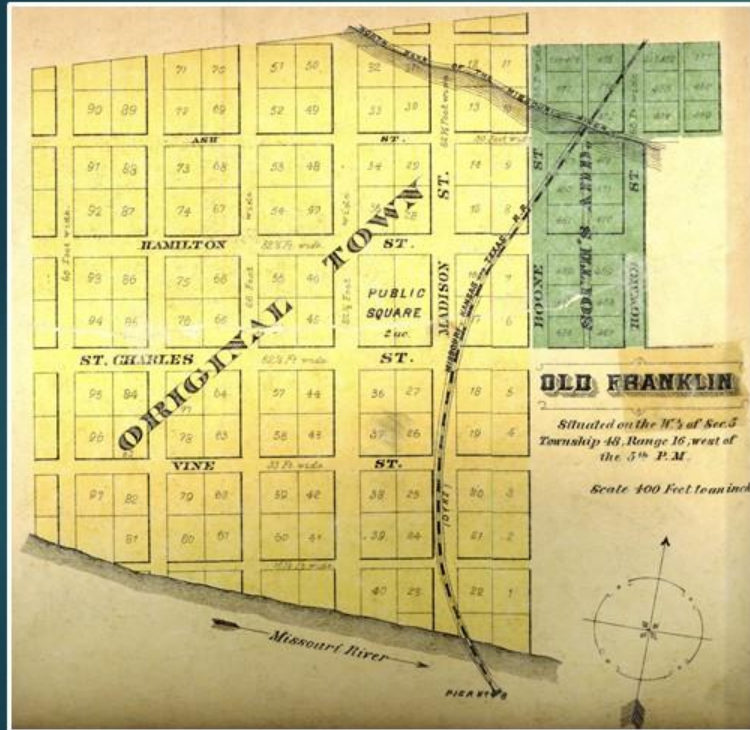
Sanders-Powell Tract of the alpha BLR in NW Boone Co.







Franklin – Boonslick Country Boom Town





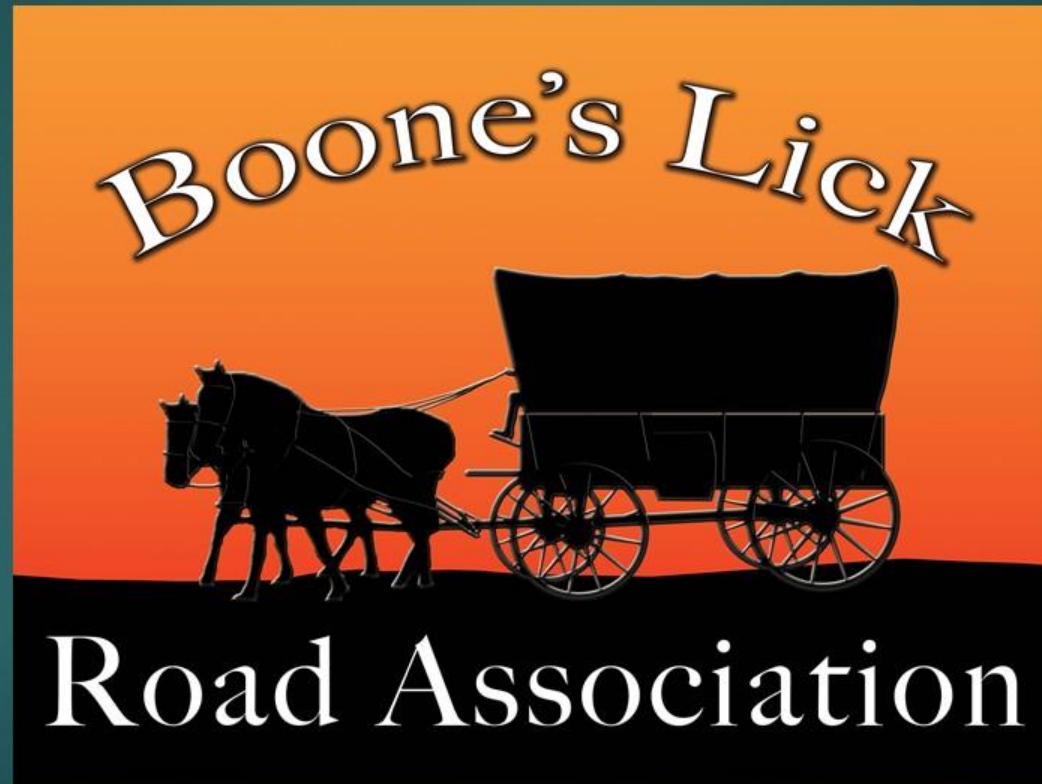
William Becknell, known as Father of the Santa Fe Trail, is depicted in a granite monument on the Katy Trail near New Franklin. Photo by Don Cullimore

- This monument at New Franklin celebrates William Becknell, Father of the Santa Fe Trail
- Becknell chose old Franklin on the Boone's Lick Road as his jumping off point
- At the time, Franklin was the west-most town in the U.S., comprised of 600-1000 people depending on the source

What Happened to the Boone's Lick Road?

- Western part of the original route saw reduced through traffic starting about 1822
- Half of the western part later abandoned, half still in use
- Shorter beta section came into major use ca 1822 & saw less traffic starting about 1826
- Eastern half (St. Charles to Williamsburg) mostly unchanged until the age of the automobile
- Missouri Hwy 2 and then U.S. Hwy 40 began modern era improvements and paving over much of the route
- I-70 replaced parts of U.S. 40 and rerouted other parts beginning in 1956
- Numerous local roads retain the Boone's Lick Road name

booneslickroad.org



Booneslickroad.org



BOONE'S LICK ROAD ASSOCIATION

P.O. Box 8076 Columbia, MO 65205-8076

Preserving the history of the first major road into the heart of Missouri

[Home](#)

[About Us](#)

[Road History](#)

[Research Library](#)

[Events](#)

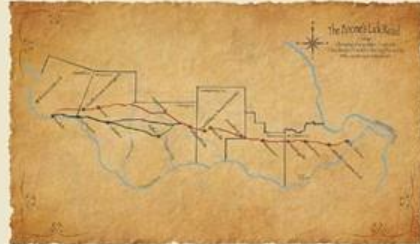
[Join or Renew](#)

[Member Login](#)

[Links](#)

[Support Our Mission](#)

[Contact Us](#)



Boone's Lick Road

The Boone's Lick Road, dating to the early 1800s, stretches across present St. Charles, Warren, Montgomery, Callaway, Boone and Howard counties of eastern and central Missouri. Although the road has been largely forgotten in modern times, if St. Louis was the Gateway to the West, then the Boone's Lick Road was the way to get there.

The Boone's Lick Road began in St. Charles and wound its way to the original Franklin, Missouri, in the center of the state. In the 1810s thousands of pioneers traveled on it into the new settlement areas of the Louisiana Purchase. In 1811, the Boone's Lick Road began the Santa Fe Trail, which opened the Southwest to trade and exchange. Settlers and traders who traveled on the other great Western trails, such as the Oregon Trail, traveled first on the Boone's Lick Road. In the 20th century, it became the guiding path of U.S. Highway 40 and eventually U.S. Interstate 70 through Missouri. [CLICK HERE](#) for a Google map of the road. The map is supported by a monograph detailing the evidence for the route(s) shown. [CLICK HERE](#) to view the monograph.

Boone's Lick Road Association

The Boone's Lick Road Association (BLRA), incorporated in Missouri in 2011, is a 501(c)(3) not-for-profit organization. Our mission is twofold. First, we want to preserve and tell the fascinating stories of the first major road into the heart of Missouri. Secondly, we hope to secure federal recognition of this road as a National Historic Trail. We aim to be the world's most comprehensive and authoritative source for information and research into this historic trail.

We invite you to join us in our quest to uncover the lost history of this road, to help us share the stories of the pioneers who traveled here, and to return this road to part of our national story.

As a 501(c)(3) organization, donations are tax deductible.

[Check us out on facebook, too](#)



March 25

Presentation "The Boone's Lick Road and Rocheport"

David Sapp, President of BLRA, will speak to the Friends of Rocheport on the importance of Rocheport to the Boone's Lick Road. A meal will ...

[View Full Text...](#)

April 8

Presentation "The Boone's Lick Road: Critical Artery to the Central Missouri Frontier."

David Sapp, President of the Boone's Lick Road Association, will speak to the Cooper County Historical Society. Public is welcome.

[View Full Text...](#)

May 3

Board Meeting
Second quarter board meeting. Public is welcome. The meeting in Columbia will be followed by a tour of the Boone Junction village and lunch offsite.

[View Full Text...](#)

August 2

Board Meeting
Third quarter board meeting. Public is welcome.

[View Full Text...](#)

Google map

Monograph



BOONE'S LICK ROAD ASSOCIATION

P.O. Box 8076 Columbia, MO 65205-8076

*Preserving the
history of the
first major road
into the heart of
Missouri*

Check out our
Research Library –
Aiming to be the
World's best
source of
accurate
information about
the BLR

- Home
- About Us
- Road History
- Research Library**
- [Library / Archive](#)
- Events
- Join or Renew
- Member Login
- Links
- Support Our Mission

Missouri County:

Resource Type:

Search: For:

[PDF List](#) [View Categories](#)

Results Per Page:

Jump to Page:

Records: 1 to 50 of 167

[1](#) [2](#) [3](#) [4](#) [Next](#)

Actions	Title ↑	Author
	"[Washington] Irving Keeps Name Secret in Columbia"	
	"1830s Boone County Missouri Tavern on the Boone's Lick Road, An: Peter Wright, Proprietor"	Sapp, David P.
	"19th-Century German Immigrant church Affiliations: Three Generations of the Johann David Rau Family in Cooper County"	Hopkins, John David
	"About Warrenton's Oldest Landmark" - Falconer Tavern in Warrenton	Smith, Thomas A.
	"Boon's Lick Country, The"	Patterson, Nicholas
	"Boone's Lick in Western Expansion: James Mackay, the Boones, and the Morrisons"	Morrow, Lynn
	"Boone's Lick Road"	Hamilton, Bill
	"Boone's Lick State Historic Site"	Dickey, Michael
	"Boone's Lick Trail and Other Old Roads"	



Questions or
Comments?