







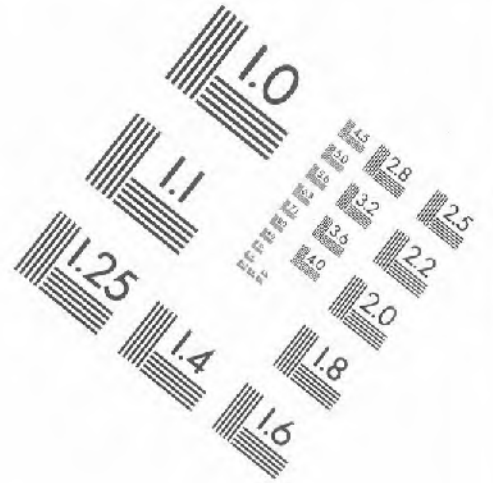
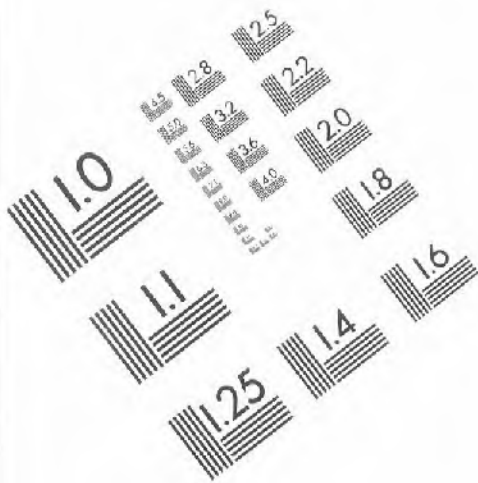
AIM

Association for Information and Image Management

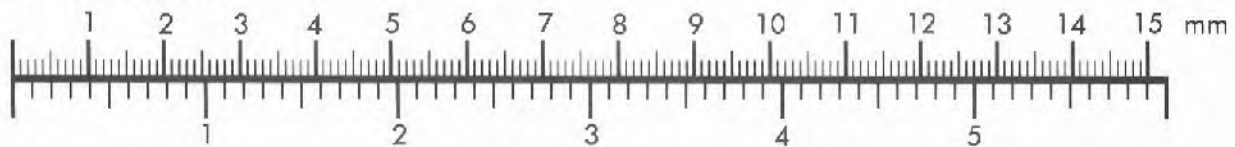
1100 Wayne Avenue, Suite 1100
Silver Spring, Maryland 20910
301/587-8202

APPLIED IMAGE, Inc
1653 East Main Street
Rochester, NY 14609 USA
Phone: 716/482-0300
Fax: 716/288-5989

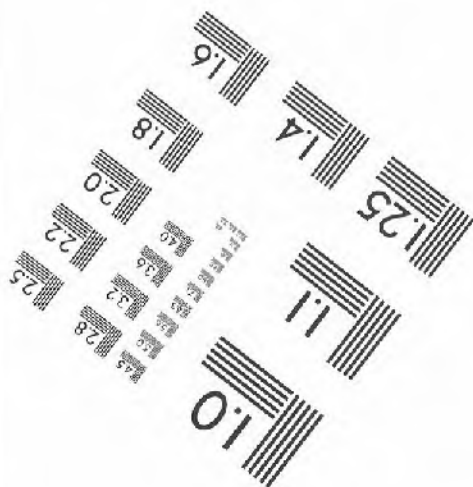
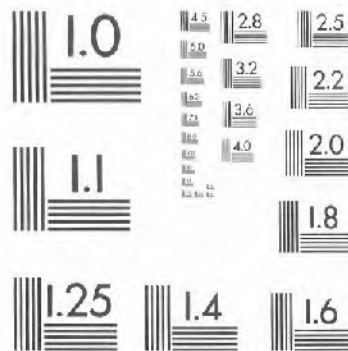
© 1993, Applied Image, Inc., All Rights Reserved



Centimeter

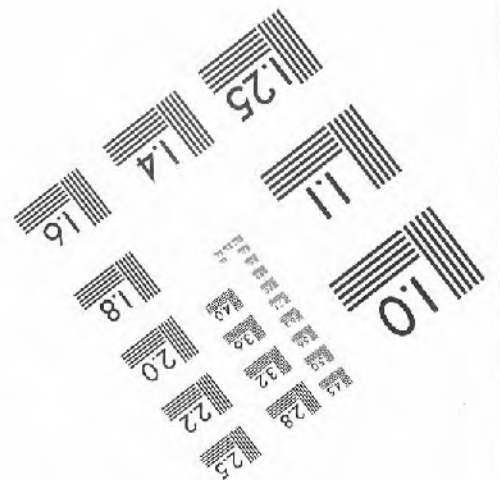


Inches



**IMAGE EVALUATION
TEST TARGET QA-3**

MANUFACTURED TO AIM STANDARDS
BY APPLIED IMAGE, INC.





AIM

Association for Information and Image Management

1100 Wayne Avenue, Suite 1100
Silver Spring, Maryland 20910

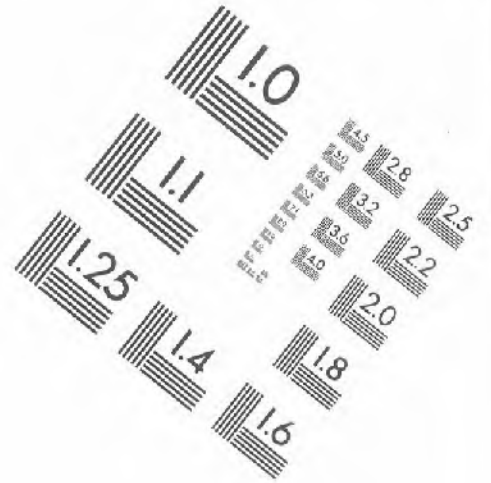
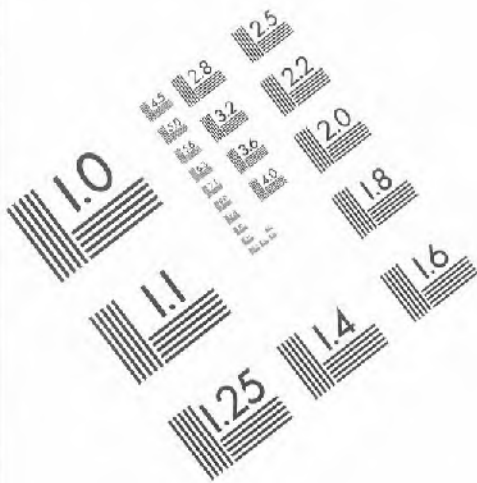
301/587-8202

APPLIED IMAGE, Inc

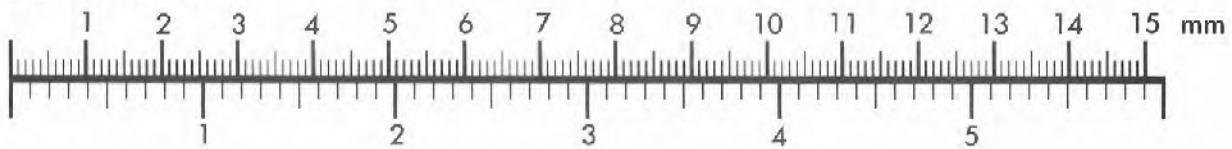


1653 East Main Street
Rochester, NY 14609 USA
Phone: 716/482-0300
Fax: 716/288-5969

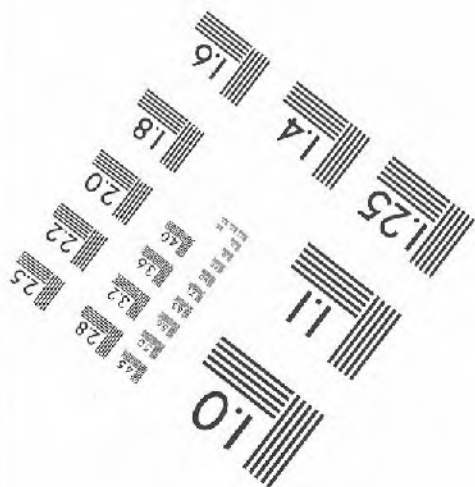
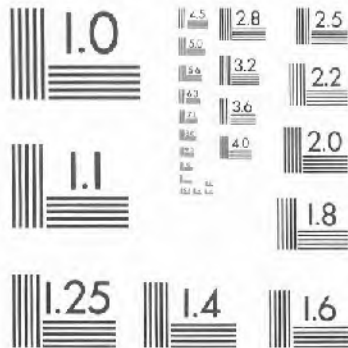
© 1993, Applied Image, Inc., All Rights Reserved



Centimeter

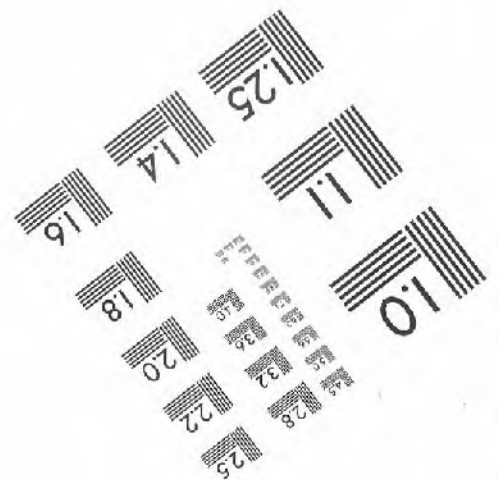


Inches



**IMAGE EVALUATION
TEST TARGET QA-3**

MANUFACTURED TO AIM STANDARDS
BY APPLIED IMAGE, INC.



BLANK PAGES

NOT FILMED

TITLE TARGET

**1880 Federal Census
Agricultural Schedule**

**Volume 65
Shannon County to Sullivan County**

Missouri Historical Society

Missouri State Archives

Office of Secretary of State
MISSOURI STATE ARCHIVES

Microfilmed at the Missouri State Archives
Jefferson City, Missouri

DATE: 3-6-2019

CAMERA OPERATOR: Carl HAAKE

ROLL NO.: Vol 65

RECORD GROUP: RG 950 Federal Census

SUB-GROUP: United States 10th Decennial Census (1880)

SERIES: Federal Census -Agricultural Schedule,
Missouri

INCLUSIVE DATES: 1880

ARRANGEMENT: By year, then by County, City, and Township

DESCRIPTION OF RECORD

Agricultural Schedules were taken from 1850 through 1930. At first these schedules listed the names of the heads of households for farms valued at \$100 or greater along with the types, amount, and value of crops, livestock, and land. The qualifying criteria were changed in 1920 to include just farms with 3 or more acres or less than 3 acres that produced at least \$250 worth of farm products.

Page No. 1
Supervisor's Dist. No. 2
Enumeration Dist. No. 153

NOTE A.—The light dotted perpendicular lines, which divide the spaces intended for numbers on this Schedule, are intended to separate the units, tens, &c., from each other, and the Enumerator should be careful that the figures are written within the small spaces so formed, thus: 7 1 1, the units in the right-hand small spaces.
NOTE B.—Make an affirmative entry by a slanting line (blue /) in one of the three columns 2, 3, and 4, according as the fact is in the case of each farm—in column 2, if the occupier is the owner of the farm; in column 3, if he is the tenant at a fixed money rental; in column 4, if he conducts it for a share of the product.
NOTE C.—Enumerators will observe that there are 104 questions relating to each farm, which are arranged in four successive divisions of each schedule page.

SCHEDULE 2.—Productions of Agriculture in Pike Creek Township in the County of Shannon, State of Missouri
enumerated by me on the 2 day of June, 1880. Sam W. Mansel
Enumerator.

Table with columns: OF THE PERSON WHO CONDUCTS THIS FARM, ACRES OF LAND, FARM VALUES, FERTILIZERS, LABOR, GRASS LANDS, SEAT CATTLE AND THEIR PRODUCTS, CEREALS, FIBER, SUGAR, ORCHARDS, NURSERY, VINEYARDS, MARKET GARDENS, BEES, FOREST PRODUCTS. Includes handwritten entries for farms like 'Mason J. Boyer' and 'Boston Jas. J.'.

Page No. 2

Supervisor's Dist. No. 2

Enumeration Dist. No. 159

S.

NOTE A.—The light dotted perpendicular lines, which divide the spaces intended for numbers on this Schedule, are intended to separate the units, tens, &c., from each other, and the Enumerator should be careful that the figures are written within the small spaces so formed, thus: 74, the units in the right-hand small spaces.

NOTE B.—Make an affirmative entry by a slanting line (thus /) in one of the three columns 2, 3, and 4, according as the fact is in the case of each farm—in column 2, if the occupier is the owner of the farm; in column 3, if he is the tenant at a fixed money rental; in column 4, if he conducts it for a share of the product.

NOTE C.—Enumerators will observe that there are 104 questions relating to each farm, which are arranged in four successive divisions of each schedule page.

SCHEDULE 2.—Productions of Agriculture in Bellevue Township in the County of Shannon, State of Missouri enumerated by me on the 24 day of June, 1880. Saml W. Munsell Enumerator.

Table with columns for Farm Name, Acres of Land (Improved, Unimproved), Farm Values, Fences, Labor, Grass Lands, Neat Cattle and Their Products, Sheep, Swine, Poultry on Hand, Cereals, Fiber, Sugar, Pulse, Orchards, Nurseries, Vineyards, Market Gardens, Bees, and Forest Products. Includes handwritten entries for 10 farms.

Received August 13, 80.

[7-306.]

C.

Page No. 3
Supervisor's Dist: No. 2
Enumeration Dist: No. 153

NOTE A.—The light dotted perpendicular lines, which divide the spaces intended for numbers on this Schedule, are intended to separate the units, tens, &c., from each other, and the Enumerator should be careful that the figures are written within the small spaces so formed, thus:

7	4	1
4	2	1
8	0	0

 the units in the right-hand small spaces.
NOTE B.—Make an affirmative entry by a slanting line (thus /) in one of the three columns 2, 3, and 4, according as the fact is in the case of each farm—in column 2, if the occupier is the owner of the farm; in column 3, if he is the tenant at a fixed money rental; in column 4, if he conducts it for a share of the product.
NOTE C.—Enumerators will observe that there are 104 questions relating to each farm, which are arranged in four successive divisions of each schedule page.

SCHEDULE 2.—Productions of Agriculture in Pike Creek Township, in the County of Shannon, State of Missouri, enumerated by me on the 4th day of June, 1880. Sam M. Munson Enumerator.

Table with multiple sections: THE PERSON WHO CONDUCTS THIS FARM, ACRES OF LAND, FARM VALUES, FENCES, LABOR, GRASS LANDS, CATTLE AND THEIR PRODUCTS, MOVEMENT, 1879, SHEEP, SWINE, POULTRY ON HAND, CEREALS, FIBER, SUGAR, MAIZE, PULSES, POTATOES, TOBACCO, ORCHARDS, NURSERY, VINEYARDS, MARKET GARDENS, BEES, FOREST PRODUCTS.

Page No. 4
Supervisor's Dist: No. 2
Enumeration Dist: No. 153

S.

NOTE A.—The light dotted perpendicular lines, which divide the spaces intended for numbers on this Schedule, are intended to separate the units, tens, &c., from each other, and the Enumerator should be careful that the figures are written within the small spaces so formed, thus: 714, the units in the right-hand small spaces.

NOTE B.—Make an affirmative entry by a slanting line (thus /) in one of the three columns 2, 3, and 4, according as the fact is in the case of each farm—in column 2, if the occupier is the owner of the farm; in column 3, if he is the tenant at a fixed money rental; in column 4, if he conducts it for a share of the product.

NOTE C.—Enumerators will observe that there are 104 questions relating to each farm, which are arranged in four successive divisions of each schedule page.

SCHEDULE 2.—Productions of Agriculture in Lake Creek Township in the County of Shannon, State of Mississippi, enumerated by me on the 5th, 12th & 14 day of June, 1880. Levi W. Murrell, Enumerator.

Table with multiple sections: THE PERSON WHO CONDUCTS THIS FARM, ACRES OF LAND, FARM VALUES, FENCES, LABOR, GRASS LANDS, NEAT CATTLE AND THEIR PRODUCTS, SHEEP, SWINE, POULTRY ON HAND, CEREALS, FIBRE, SUGAR, POTATOES, TOBACCO, ORCHARDS, NURSERIES, VINEYARDS, MARKET GARDENS, BEES, FOREST PRODUCTS.

Page No. 5
Supervisor's Dist. No. 2
Enumeration Dist. No. 153

S.

NOTE A.—The light dotted perpendicular lines, which divide the spaces intended for numbers on this Schedule, are intended to separate the units, tens, &c., from each other, and the Enumerator should be careful that the figures are written within the small spaces so formed, thus: 74, the units 4 2 1, the tens 7 4 1, the units 4 2 1.

NOTE B.—Make an affirmative entry by a slanting line (thus /) in one of the three columns 2, 3, and 4, according as the fact is in the case of each farm—in column 2, if the occupier is the owner of the farm; in column 3, if he is the tenant at a fixed money rental; in column 4, if he conducts it for a share of the product.

NOTE C.—Enumerators will observe that there are 104 questions relating to each farm, which are arranged in four successive divisions of each schedule page.

SCHEDULE 2.—Productions of Agriculture in Pike Creek Township in the County of Monroe, State of Missouri enumerated by me on the 14th 15th day of June, 1880. C. W. Russell

Enumerator.

Table with multiple sections: 'OF THE PERSON WHO CONDUCTS THIS FARM', 'ACRES OF LAND', 'FARM VALUES', 'FENCES', 'LABOR', 'GRASS LANDS', 'NEAT CATTLE AND THEIR PRODUCTS', 'SHEEP', 'SWINE', 'POULTRY OR BIRD', 'RICE', 'CEREALS', 'FIBER', 'SUGAR', 'PULSE', 'POTATOES', 'TOBACCO', 'ORCHARDS', 'NURSERIES', 'VINEYARDS', 'MARKET GARDENS', 'BEES', 'FOREST PRODUCTS'. Includes handwritten entries for various farms and crops.

B.

Page No. 9
Supervisor's Dist: No. 2
Enumeration Dist: No. 153

S.

NOTE A.—The light dotted perpendicular lines, which divide the spaces intended for numbers on this Schedule, are intended to separate the units, tens, &c., from each other, and the Enumerator should be careful that the figures are written within the small spaces so formed, thus:

7	4	1
4	2	1
3	9	

NOTE B.—Make an affirmative entry by a slanting line (thus /) in one of the three columns 2, 3, and 4, according as the fact is in the case of each farm—in column 2, if the occupier is the owner of the farm; in column 3, if he is the tenant at a fixed money rental; in column 4, if he conducts it for a share of the product.

NOTE C.—Enumerators will observe that there are 104 questions relating to each farm, which are arranged in four successive divisions of each schedule page.

SCHEDULE 2.—Productions of Agriculture in Pike Creek Township the County of Shannon, State of Missouri enumerated by me on the 15 day of June, 1880. Levi McManis Enumerator.

Table with columns: OF THE PERSON WHO CONDUCTS THIS FARM, ACRES OF LAND, FARM VALUES, FENCES, LABOR, GRASS LANDS. Includes entries for Moose Farms, Birtlew Stephen, and Lowry Tobias.

Table with columns: NEAT CATTLE AND THEIR PRODUCTS, SHEEP, SWINE, POULTRY ON HAND. Includes columns for working cows, calves dropped, lambs dropped, etc.

Table with columns: CEREALS, FIBER, SUGAR. Includes columns for barley, buckwheat, Indian corn, wheat, flax, cane, sorghum, maple.

Table with columns: PULSE, POTATOES, TOBACCO, ORCHARDS, NURSERIES, VINEYARDS, MARKET GARDENS, BEES, FOREST PRODUCTS. Includes columns for cow peas, potatoes, tobacco, apples, peaches, grapes, wine, honey, wax.

Pike Creek Township June 15 1880. I have this day finished up the agricultural department of schedule No. 2, for said township. Signed Levi McManis Enumerator.

Page No. 1
Supervisor's Dist. No. 2
Enumeration Dist. No. 153

S.

NOTE A.—The light dotted perpendicular lines, which divide the spaces intended for numbers on this Schedule, are intended to separate the units, tens, &c., from each other, and the Enumerator should be careful that the figures are written within the small spaces so formed, thus: 74, the units in the right-hand small spaces.

NOTE B.—Make an affirmative entry by a slanting line (thus /) in one of the three columns 2, 3, and 4, according as the fact is in the case of each farm—in column 2, if the occupier is the owner of the farm; in column 3, if he is the tenant at a fixed money rental; in column 4, if he conducts it for a share of the product.

NOTE C.—Enumerators will observe that there are 104 questions relating to each farm, which are arranged in four successive divisions of each schedule page.

SCHEDULE 2.—Productions of Agriculture in Delaware in the County of Shamong, State of New Jersey enumerated by me on the 27th day of June, 1880. Levi M. Munnell, Enumerator.

Table with multiple sections: 'OF THE PERSON WHO CONDUCTS THIS FARM', 'ACRES OF LAND', 'FARM VALUES', 'FENCES', 'LABOR', 'GRASS LANDS', 'NEAT CATTLE AND THEIR PRODUCTS', 'SHEEP', 'CEREALS', 'FIBER', 'SUGAR', 'PUTSE', 'POTATOES', 'TOBACCO', 'ORCHARDS', 'NURSERIES', 'VINEYARDS', 'MARKET GARDENS', 'BEES', 'FOREST PRODUCTS'. Includes handwritten entries for various farms and agricultural data.

Page No. 4

Supervisor's Dist. No. 2

Enumeration Dist. No. 153

NOTE A.—The light dotted perpendicular lines, which divide the spaces intended for numbers on this Schedule, are intended to separate the units, tens, &c., from each other, and the Enumerator should be careful that the figures are written within the small spaces so formed, thus: 24, the units in the right-hand small spaces.

NOTE B.—Make an affirmative entry by a slanting line (thus /) in one of the three columns 2, 3, and 4, according as the fact is in the case of each farm—in column 2, if the occupier is the owner of the farm; in column 3, if he is the tenant at a fixed money rental; in column 4, if he conducts it for a share of the product.

NOTE C.—Enumerators will observe that there are 104 questions relating to each farm, which are arranged in four successive divisions of each schedule page.

SCHEDULE 2.—Productions of Agriculture in Delaware in the County of Delaware, State of Delaware, enumerated by me on the 9th day of June, 1880.

Samuel M. ... Enumerator.

Table with 104 columns and 10 rows. Columns include: THE NAME, ACRES OF LAND (Improved, Unimproved), FARM VALUES, FENCES, LABOR, GRASS LANDS, NEAT CATTLE AND THEIR PRODUCTS, SHEEP, SWINE, POULTRY ON HAND, RICE, CEREALS, FIBER, SUGAR, PULSE, POTATOES, TOBACCO, ORCHARDS, NURSERIES, VINEYARDS, MARKET GARDENS, BEES, FOREST PRODUCTS.

Page No. 9
Supervisor's Dist. No. 2
Enumeration Dist. No. 153

NOTE A.—The light dotted perpendicular lines, which divide the spaces intended for numbers on this Schedule, are intended to separate the units, tens, &c., from each other, and the Enumerator should be careful that the figures are written within the small spaces so formed, thus:
NOTE B.—Make an affirmative entry by a slanting line (thus /) in one of the three columns 2, 3, and 4, according as the fact is in the case of each farm—in column 2, if the occupier is the owner of the farm; in column 3, if he is the tenant at a fixed money rental; in column 4, if he conducts it for a share of the product.
NOTE C.—Enumerators will observe that there are 104 questions relating to each farm, which are arranged in four successive divisions of each schedule page.

SCHEDULE 2.—Productions of Agriculture in Delaware Township in the County of Mann, State of Maryland, enumerated by me on the 9th day of June, 1880. J. M. Mumby

Enumerator.

Table with multiple sections: 'OF THE PERSON WHO CONDUCTS THIS FARM', 'ACRES OF LAND', 'FARM VALUES', 'FENCES', 'LABOR', 'GRASS LANDS', 'NEAT CATTLE AND THEIR PRODUCTS', 'SHEEP', 'SWINE', 'CEREALS', 'FIBER', 'SUGAR', 'PULSES', 'POTATOES', 'TOBACCO', 'ORCHARDS', 'NURSERTS', 'VINEYARDS', 'MARKET GARDENS', 'BEES', 'FOREST PRODUCTS'. Includes handwritten entries for various farms and crops.

D.

Page No. 10

Supervisor's Dist. No. 4

Enumeration Dist. No. 153

S.

NOTE A.—The light dotted perpendicular lines, which divide the spaces intended for numbers on this Schedule, are intended to separate the units, tens, &c., from each other, and the Enumerator should be careful that the figures are written within the small spaces so formed, thus: 74, the units in the right-hand small spaces.

NOTE B.—Make an affirmative entry by a slanting line (thus /) in one of the three columns 2, 3, and 4, according as the fact is in the case of each farm—in column 2, if the occupier is the owner of the farm; in column 3, if he is the tenant at a fixed money rental; in column 4, if he conducts it for a share of the product.

NOTE C.—Enumerators will observe that there are 104 questions relating to each farm, which are arranged in four successive divisions of each schedule page.

SCHEDULE 2.—Productions of Agriculture in Delaware Township, in the County of Shannon, State of Missouri, enumerated by me on the 10th day of June, 1880. Levi W. Munsell

Enumerator.

Table with columns: THE NAME, FENCIBLE, ACRES OF LAND (IMPROVED, UNIMPROVED), FARM VALUES, FENCES, LABOR, GRASS LANDS. Includes entries for William W. Munsell, Thomas Elizabeth, Williams J. Munsell, Lancaster Samuel S., Lancaster William E., James James, and Maggie M. Lipp.

Table with columns: NEAT CATTLE AND THEIR PRODUCTS, SHEEP, SWINE, POULTRY ON HAND, RICE. Includes sub-sections for ON HAND JUNE 1, 1880, MOVEMENT, 1879, and various product categories.

Table with columns: CEREALS, FIBER, SUGAR. Includes sub-sections for BARLEY, BUCKWHEAT, INDIAN CORN, OATS, RYE, WHEAT, COTTON, FLAX, HEMP, CANE, SORGHUM, and MAPLE.

Table with columns: PULSES, POTATOES, TOBACCO, ORCHARDS, NURSERIES, VINEYARDS, MARKET GARDENS, BEES, FOREST PRODUCTS. Includes sub-sections for Cow Peas, Beans, Peas, and various agricultural products.

Delaware Township June 11th 1880
Shannon day finished up the
Agricultural department, or schedule 102 in said
Signed Levi W. Munsell
Enumerator

Page No. 159
Supervisor's Dist. No. 2
Enumeration Dist. No. 159

NOTE A.—The light dotted perpendicular lines, which divide the spaces intended for numbers on this Schedule, are intended to separate the units, tens, &c., from each other, and the Enumerator should be careful that the figures are written within the small spaces so formed, thus: 7:4, the units in the right-hand small spaces.

NOTE B.—Make an affirmative entry by a slanting line (thus /) in one of the three columns 2, 3, and 4, according as the fact is in the case of each farm—in column 2, if the occupier is the owner of the farm; in column 3, if he is the tenant at a fixed money rental; in column 4, if he conducts it for a share of the product.

NOTE C.—Enumerators will observe that there are 104 questions relating to each farm, which are arranged in four successive divisions of each schedule page.

SCHEDULE 2.—Productions of Agriculture in Brookline in the County of Nassau, State of Mississippi enumerated by me on the 17th day of June, 1880. D. W. Munsell, Enumerator.

Table with columns: THE NAME, TENURE, ACRES OF LAND (IMPROVED, UNIMPROVED), FARM VALUES, FENCES, LABOR, GRASS LANDS, NEAT CATTLE AND THEIR PRODUCTS, SHEEP, SWINE, POULTRY ON HAND, CEREALS, FIBER, SUGAR, PULSES, POTATOES, TOBACCO, APPLES, PEACHES, NURSERIES, VINEYARDS, MARKET GARDENS, BEES, FOREST PRODUCTS.

B. 123

Page No. 2
Supervisor's Dist: No. 2
Enumeration Dist: No. 153

S.

NOTE A.—The light dotted perpendicular lines, which divide the spaces intended for numbers on this Schedule, are intended to separate the units, tens, &c., from each other, and the Enumerator should be careful that the figures are written within the small spaces so formed, thus: 714, the units in the right-hand small spaces.

NOTE B.—Make an affirmative entry by a slanting line (thus /) in one of the three columns 2, 3, and 4, according as the fact is in the case of each farm—in column 2, if the occupier is the owner of the farm; in column 3, if he is the tenant at a fixed money rental; in column 4, if he conducts it for a share of the product.

NOTE C.—Enumerators will observe that there are 104 questions relating to each farm, which are arranged in four successive divisions of each schedule page.

SCHEDULE 2.—Productions of Agriculture in Barck Iowa in the County of Shannon, State of Missouri enumerated by me on the 16th day of June, 1880. Lucretia M. Murrell Enumerator.

Table with columns: OF THE PERSON WHO CONDUCTS THIS FARM, ACRES OF LAND, FARM VALUES, FENCES, LABOR, GRASS LANDS, NEAT CATTLE AND THEIR PRODUCTS, SHEEP, SWINE, POULTRY ON HAND, CEREALS, FIBER, SUGAR, PULSE, POTATOES, TOBACCO, ORCHARDS, NURSERY, VINEYARDS, MARKET GARDENS, BEES, FOREST PRODUCTS.

Page No. 2
Supervisor's Dist. No. 2
Enumeration Dist. No. 153

S.

NOTE A.—The light dotted perpendicular lines, which divide the spaces intended for numbers on this Schedule, are intended to separate the units, tens, &c., from each other, and the Enumerator should be careful that the figures are written within the small spaces so formed, thus:

7	4
4	2
1	
3	9

NOTE B.—Make an affirmative entry by a slanting line (thus /) in one of the three columns 2, 3, and 4, according as the fact is in the case of each farm—in column 2, if the occupier is the owner of the farm; in column 3, if he is the tenant at a fixed money rental; in column 4, if he conducts it for a share of the product.
NOTE C.—Enumerators will observe that there are 104 questions relating to each farm, which are arranged in four successive divisions of each schedule page.

SCHEDULE 2.—Productions of Agriculture in *Brookston* in the County of *Shannon*, State of *Missouri* enumerated by me on the *17th* day of June, 1880. *Levi M. Mumford* Enumerator.

OF THE PERSON WHO CONDUCTS THIS FARM.				ACRES OF LAND.				FARM VALUES.				FENCES.				LABOR.				GRASS LANDS.											
THE NAME.				IMPROVED.				UNIMPROVED.				OF LIVE STOCK.				ESTIMATED VALUE OF ALL FARM PRODUCTIONS.				ACRES OF 1879.											
Owner.				Tilled, including fallow and grass lands, (whether pasture or mowland).				Permanent meadows, pastures, orchards, vineyards, woodlands and forest.				Of farm, including land, fences, and buildings.				Cost of building and repairing in 1879.				Amount paid for wages for farm labor during 1879, including value of board.				Mowland, Not Mown, Hay, Clover Seed, Grass Seed, Horses of all ages on hand June 1, 1880, Males and Females of all ages on hand June 1, 1880.							
1	2	3	4	5	6	7	8	9	10	11	12	13	14	15	16	17	18	19	20	21	22	23	24								
1	Hurst George	/		10		30		150	5	100					90								1								
2	Corbet Henry	/		14	2	64		400	50	210				15	10	100							2								
3	Spurrier John H.	/		40		240		600	70	500						200							4								
4	Casey Isaac	/		15	39	160		500		125					110								2								
5	Spurrier Elizabeth	/		40		40		500	5	130					200								2								
6	Dean George H.	/		30	10	130		500	16	180					200								2								
7	Jones John H.	/		30		130		250	25	180					100								1								
8	Darwin H. L.	/		30		300		500	60	175					250								4								
9	Brown Jas.	/		35		200		600	40	250					250								2								
10	Dean Thomas	/		20		20		200	50	150					150								1								

NEAT CATTLE AND THEIR PRODUCTS.														SHEEP.														SWINE.								POULTRY ON HAND JUNE 1ST 1880 ENGLISH BREED OF SHEEP, HATCHING.																									
ON HAND JUNE 1, 1880.														MOVEMENT, 1879.														ON HAND JUNE 1, 1880.														MOVEMENT, 1879.								CLIP, SPRING 1880, SHORN AND TO BE SHORN.						POULTRY ON HAND JUNE 1ST 1880 ENGLISH BREED OF SHEEP, HATCHING.					
CATTLE OF ALL AGES.														SHEEP AND LAMBS.														SWINE.								POULTRY ON HAND JUNE 1ST 1880 ENGLISH BREED OF SHEEP, HATCHING.																									
1	2	3	4	5	6	7	8	9	10	11	12	13	14	15	16	17	18	19	20	21	22	23	24	25	26	27	28	29	30	31	32	33	34	35	36	37	38	39	40	41	42	43	44	45	46	47	48	49	50	51											
1	2	3	4	5	6	7	8	9	10	11	12	13	14	15	16	17	18	19	20	21	22	23	24	25	26	27	28	29	30	31	32	33	34	35	36	37	38	39	40	41	42	43	44	45	46	47	48	49	50	51											

CEREALS.														FIBER.														SUGAR.																						
CEREALS.														FIBER.														SUGAR.																						
1	2	3	4	5	6	7	8	9	10	11	12	13	14	15	16	17	18	19	20	21	22	23	24	25	26	27	28	29	30	31	32	33	34	35	36	37	38	39	40	41	42	43	44	45	46	47	48	49	50	51
1	2	3	4	5	6	7	8	9	10	11	12	13	14	15	16	17	18	19	20	21	22	23	24	25	26	27	28	29	30	31	32	33	34	35	36	37	38	39	40	41	42	43	44	45	46	47	48	49	50	51

PULSES.														ORCHARDS—1879.														NURSERIES.								VINEYARDS.						MARKET GARDENS.						BEES—1879.						FOREST PRODUCTS.					
PULSES.														ORCHARDS—1879.														NURSERIES.								VINEYARDS.						MARKET GARDENS.						BEES—1879.						FOREST PRODUCTS.					
1	2	3	4	5	6	7	8	9	10	11	12	13	14	15	16	17	18	19	20	21	22	23	24	25	26	27	28	29	30	31	32	33	34	35	36	37	38	39	40	41	42	43	44	45	46	47	48	49	50	51									
1	2	3	4	5	6	7	8	9	10	11	12	13	14	15	16	17	18	19	20	21	22	23	24	25	26	27	28	29	30	31	32	33	34	35	36	37	38	39	40	41	42	43	44	45	46	47	48	49	50	51									

D. 149

Page No. 4
Supervisor's Dist. No. 2
Enumeration Dist. No. 153

S.

NOTE A.—The light dotted perpendicular lines, which divide the spaces intended for numbers on this Schedule, are intended to separate the units, tens, &c., from each other, and the Enumerator should be careful that the figures are written within the small spaces so formed, thus: 7 1 4, the units in the right-hand small spaces.

NOTE B.—Make an affirmative entry by a slanting line (thus /) in one of the three columns 2, 3, and 4, according as the fact is in the case of each farm—in column 2, if the occupier is the owner of the farm; in column 3, if he is the tenant at a fixed money rental; in column 4, if he conducts it for a share of the product.

NOTE C.—Enumerators will observe that there are 104 questions relating to each farm, which are arranged in four successive divisions of each schedule page.

SCHEDULE 2.—Productions of Agriculture in Berch Jure in the County of Shannon, State of Missouri enumerated by me on the 19 & 21 day of June, 1880. Levi W. Murrell, Enumerator.

Table with multiple sections: OF THE PERSON WHO CONDUCTS THIS FARM, ACRES OF LAND, FARM VALUES, FEENCES, LABOR, GRASS LANDS, SEAT CATTLE AND THEIR PRODUCTS, SHEEP, SWINE, POULTRY OR BIRD, RICE, CEREALS, FIBER, SUGAR, PULSE, POTATOES, TOBACCO, ORCHARDS, NURSERIES, VINEYARDS, MARKET GARDENS, BEES, FOREST PRODUCTS.

Page No. 5
Supervisor's Dist. No. 2
Enumeration Dist. No. 159

NOTE A.—The light dotted perpendicular lines, which divide the spaces intended for numbers on this Schedule, are intended to separate the units, tens, &c., from each other, and the Enumerator should be careful that the figures are written within the small spaces so formed, thus:

7	4	the units
4	2	1
3	9	

NOTE B.—Make an affirmative entry by a slanting line (thus /) in one of the three columns 2, 3, and 4, according as the fact is in the case of each farm—in column 2, if the occupier is the owner of the farm; in column 3, if he is the tenant at a fixed money rental; in column 4, if he conducts it for a share of the product.

NOTE C.—Enumerators will observe that there are 104 questions relating to each farm, which are arranged in four successive divisions of each schedule page.

SCHEDULE 2.—Productions of Agriculture in Baruch Iowa in the County of Shannon, State of Missouri enumerated by me on the 21 day of June, 1880. Levi Williams Enumerator.

Table with multiple sections: OF THE PERSON WHO CONDUCTS THIS FARM, ACRES OF LAND, FARM VALUES, FENCES, LABOR, GRASS LANDS, NEAT CATTLE AND THEIR PRODUCTS, SHEEP, SWINE, POULTRY ON HAND, CEREALS, FIBER, SUGAR, MAPLE-1879, PULSES, POTATOES, TORACCO, COCHARDY-1879, NUTTREES, VINEYARDS, WABBIT GARDENS, BEES-1879, FOREST PRODUCTS.

Page No. 2

Supervisor's Dist. No. 2

Enumeration Dist. No. 153

S.

NOTE A.—The light dotted perpendicular lines, which divide the spaces intended for numbers on this Schedule, are intended to separate the units, tens, &c., from each other, and the Enumerator should be careful that the figures are written within the small spaces so formed, thus: 74, the units in the right-hand small spaces.

NOTE B.—Make an affirmative entry by a slanting line (thus /) in one of the three columns 2, 3, and 4, according as the fact is in the case of each farm—in column 2, if the occupier is the owner of the farm; in column 3, if he is the tenant at a fixed money rental; in column 4, if he conducts it for a share of the product.

NOTE C.—Enumerators will observe that there are 104 questions relating to each farm, which are arranged in four successive divisions of each schedule page.

SCHEDULE 2.—Productions of Agriculture in Breck Inu in the County of Shannon, State of Missouri enumerated by me on the 21st day of June, 1880. Geo W. M. Munnell Enumerator.

Table with columns: OF THE PERSON WHO CONDUCTS THIS FARM, THE NAME, TENURE, ACRES OF LAND (IMPROVED, UNIMPROVED), FARM VALUES, PENCES, LABOR, GRASS LANDS. Includes entries for Coffin J. C., Jones Elizabeth, Seaywood Samuel, etc.

Table with columns: NEAT CATTLE AND THEIR PRODUCTS, MOVEMENT, 1879, SHEEP, MOVEMENT, 1879, SWINE, DOUGHERY OR HAND. Includes columns for working oxen, milk cows, calves, sheep, and swine.

Table with columns: CEREALS, BARLEY, RICEWHEAT, INDIAN CORN, OATS, WHEAT, CEREALS-1879, FIBER, FLAX-1879, HEMP, SUGAR, CANE-1879, SORGHUM-1879, MAPLE-1879.

Table with columns: PULSE, POTATOES (Irish, Sweet), TOROCCO, ORCHARDS-1879, PEACH, NURSERY, VINEYARDS, MARKET GARDENS, BEES-1879, FOREST PRODUCTS.



P6

Page No. 7
Supervisor's Dist. No. 2
Enumeration Dist. No. 153

S.

NOTE A.—The light dotted perpendicular lines, which divide the spaces intended for numbers on this Schedule, are intended to separate the units, tens, &c., from each other, and the Enumerator should be careful that the figures are written within the small spaces so formed, thus:

7	4
4	2
1	3

 the units in the right-hand small spaces.

NOTE B.—Make an affirmative entry by a slanting line (thus /) in one of the three columns 2, 3, and 4, according as the fact is in the case of each farm—in column 2, if the occupier is the owner of the farm; in column 3, if he is the tenant at a fixed money rental; in column 4, if he conducts it for a share of the product.

NOTE C.—Enumerators will observe that there are 104 questions relating to each farm, which are arranged in four successive divisions of each schedule page.

SCHEDULE 2.—Productions of Agriculture in Brockton in the County of Mamou, State of Missouri, enumerated by me on the 22nd day of June, 1880. Levi W. Mumford Enumerator.

Table with 104 columns and 10 rows. Columns include: THE NAME, ACRES OF LAND (IMPROVED, UNIMPROVED), FARM VALUES, FENCING, LABOR, GRASS LANDS, NEAT CATTLE AND THEIR PRODUCTS, SHEEP, SWINE, CEREALS, FIBER, SUGAR, PULSES, POTATOES, TOBACCO, ORCHARDS, NURSERY, VINEYARDS, MARKET GARDENS, BEES, FOREST PRODUCTS.

Page No. 8

Supervisor's Dist: No. 159

Enumeration Dist: No. 159

S.

NOTE A.—The light dotted perpendicular lines, which divide the spaces intended for numbers on this Schedule, are intended to separate the units, tens, &c., from each other, and the Enumerator should be careful that the figures are written within the small spaces so formed, thus: 741, the units in the right-hand small spaces.

NOTE B.—Make an affirmative entry by a slanting line (thus /) in one of the three columns 2, 3, and 4, according as the fact is in the case of each farm—in column 2, if the occupier is the owner of the farm; in column 3, if he is the tenant at a fixed money rental; in column 4, if he conducts it for a share of the product.

NOTE C.—Enumerators will observe that there are 104 questions relating to each farm, which are arranged in four successive divisions of each schedule page.

SCHEDULE 2.—Productions of Agriculture in Brook Lee in the County of Shannon, State of Michigan enumerated by me on the 29th day of June, 1880. E. W. Williams Enumerator.

Table with columns: OF THE PERSON WHO CONDUCTS THIS FARM, ACRES OF LAND, FARM VALUES, FENCES, LABOR, GRASS LANDS. Includes farm names like Mumme Daniel B., Deputt Hyschiah, Macintire Abalum, etc.

Table with columns: NEAT CATTLE AND THEIR PRODUCTS, SHEEP, SWINE, POULTRY ON HAND. Includes columns for On Hand June 1, 1880, and Movement 1879.

Table with columns: CEREALS, FIBER, SUGAR. Includes sub-sections for BARLEY, RUCKWHEAT, INDIAN CORN, OATS, RYE, WHEAT, COTTON, HEMP, CANE, SORGHUM, MAPLE.

Table with columns: PULSE, POTATOES, TOBACCO, ORCHARDS, NURSERIES, VINEYARDS, MARKET GARDENS, BEES, FOREST PRODUCTS. Includes sub-sections for APPLE, PEACH, GRAPES, WINE, HONEY, WAX.

Page No. 9
Supervisor's Dist: No. 2
Enumeration Dist: No. 153

NOTE A.—The light dotted perpendicular lines, which divide the spaces intended for numbers on this Schedule, are intended to separate the units, tens, &c., from each other, and the Enumerator should be careful that the figures are written within the small spaces so formed, thus:

7	1
4	2
3	9

NOTE B.—Make an affirmative entry by a slanting line (thus /) in one of the three columns 2, 3, and 4, according as the fact is in the case of each farm—in column 2, if the occupier is the owner of the farm; in column 3, if he is the tenant at a fixed money rental; in column 4, if he conducts it for a share of the product.

NOTE C.—Enumerators will observe that there are 104 questions relating to each farm, which are arranged in four successive divisions of each schedule page.

SCHEDULE 2.—Productions of Agriculture in Birch Tree in the County of Stanton, State of Missouri, enumerated by me on the 24 day of June, 1880. Sam McManis Enumerator.

Table with columns: OF THE PERSON WHO CONDUCTS THIS FARM, ACRES OF LAND, FARM VALUES, FENCES, LABOR, GRASS LANDS. Includes entries for Evans William, Weaver Peter, Randolph Mathew, Lancaster Joshua, Smith Louis, Selph Susan, Perkins Abam S., and Raferty George W.

Table with columns: NEAT CATTLE AND THEIR PRODUCTS, SHEEP, SWINE, POULTRY OR HAND. Includes sub-sections for Cattle of all ages, Sheep and lambs, and various product metrics.

Table with columns: CEREALS, FIBER, SUGAR. Includes sub-sections for Barley, Rye, Indian Corn, Oats, Wheat, Cotton, Flax, Hemp, Cane, Sorghum, and Maple.

Table with columns: PULSE, POTATOES, TOBACCO, ORCHARDS—1879, NURSERIES, VINEYARDS, MARKET GARDENS, BEES—1879, FOREST PRODUCTS. Includes sub-sections for various agricultural products and their values.

Birch Tree June 24th 1880
Lancaster dug and up the
Agricultural department of
Schedule No 2 Birch Tree Township
Sam McManis
Enumerator

Page No. 90

Supervisor's Dist. No.

Enumeration Dist. No.

S.

NOTE A.—The light dotted perpendicular lines, which divide the spaces intended for numbers on this Schedule, are intended to separate the units, tens, &c., from each other, and the Enumerator should be careful that the figures are written within the small spaces so formed, thus: 4211

NOTE B.—Make an affirmative entry by a slanting line (thus /) in one of the three columns 2, 3, and 4, according as the fact is in the case of each farm—in column 2, if the occupier is the owner of the farm; in column 3, if he is the tenant at a fixed money rental; in column 4, if he conducts it for a share of the product.

NOTE C.—Enumerators will observe that there are 104 questions relating to each farm, which are arranged in four successive divisions of each schedule page.

SCHEDULE 2.—Productions of Agriculture in _____ in the County of _____, State of _____ enumerated by me on the _____ day of June, 1880.

Enumerator.

Table with columns: OF THE PERSON WHO CONDUCTS THIS FARM, ACRES OF LAND, FARM VALUES, FENCES, LABOR, GRASS LANDS. Includes sub-headers like THE NAME, IMPROVED, UNIMPROVED, and various measurement units.

Table with columns: NEAT CATTLE AND THEIR PRODUCTS, SHEEP, SWINE, RICE. Includes sub-headers for ON HAND JUNE 1, 1880, MOVEMENT 1879, and various animal counts and product measurements.

Table with columns: CEREALS, FIBER, SUGAR. Includes sub-headers for BARLEY, RYE, WHEAT, COTTON, FLAX, HEMP, CANE, SORGHUM, and MAPLE.

Table with columns: PULSE, POTATOES, TOBACCO, ORCHARDS, NURSERIES, VINEYARDS, MARKET GARDENS, BEES, FOREST PRODUCTS. Includes sub-headers for various crops and their production metrics.

Received July 28 1880

A.

Page No. 1
Supervisor's Dist: No. 2
Enumeration Dist: No. 154

S.

NOTE A.—The light dotted perpendicular lines, which divide the spaces intended for numbers on this Schedule, are intended to separate the units, tens, &c., from each other, and the Enumerator should be careful that the figures are written within the small spaces so formed, thus:

7	4	1
4	2	1
3	9	

NOTE B.—Make an affirmative entry by a slanting line (thus /) in one of the three columns 2, 3, and 4, according as the fact is in the case of each farm—in column 2, if the occupier is the owner of the farm; in column 3, if he is the tenant at a fixed money rental; in column 4, if he conducts it for a share of the product.

NOTE C.—Enumerators will observe that there are 104 questions relating to each farm, which are arranged in four successive divisions of each schedule page.

SCHEDULE 2.—Productions of Agriculture in *The Village of Commerce* in the County of *Hannover*, State of *Missouri* enumerated by me on the *1st* day of June, 1880. *Seaton Carr*

Enumerator.

Table with multiple sections: 'OF THE PERSON WHO CONDUCTS THIS FARM', 'ACRES OF LAND', 'FARM VALUES', 'FENCES', 'LABOR', 'GRASS LANDS', 'NEAT CATTLE AND THEIR PRODUCTS', 'SHEEP', 'SWINE', 'CEREALS', 'FIBER', 'SUGAR', 'PULSE', 'POTATOES', 'TOBACCO', 'ORCHARDS', 'NURSERIES', 'VINEYARDS', 'MARKET GARDENS', 'BEEHIVES', 'FOREST PRODUCTS'. Includes handwritten entries for farms like 'Gregg James S.' and 'Orchard James'.

B.

Page No. 2

Supervisor's Dist. No. 2

Enumeration Dist. No. 154

S.

NOTE A.—The light dotted perpendicular lines, which divide the spaces intended for numbers on this Schedule, are intended to separate the units, tens, &c., from each other, and the Enumerator should be careful that the figures are written within the small spaces so formed, thus: 74, the units in the right-hand small spaces.

NOTE B.—Make an affirmative entry by a slanting line (thus /) in one of the three columns 2, 3, and 4, according as the fact is, in the case of each farm—in column 2, if the occupier is the owner of the farm; in column 3, if he is the tenant at a fixed money rental; in column 4, if he conducts it for a share of the product.

NOTE C.—Enumerators will observe that there are 104 questions relating to each farm, which are arranged in four successive divisions of each schedule page.

SCHEDULE 2.—Productions of Agriculture in Eminence Village in the County of Shannon, State of Missouri enumerated by me on the 1st day of June, 1880. Seaborn Carr

Enumerator.

Table with columns: OF THE PERSON WHO CONDUCTS THIS FARM, ACRES OF LAND, FARM VALUES, FENCES, LABOR, GRASS LANDS. Includes farm names like Sholar Joshua, Chilton Martha, etc.

Table with columns: NEAT CATTLE AND THEIR PRODUCTS, SHEEP, SWINE. Includes sub-sections for MOVEMENT, 1879 and ON HAND JUNE 1, 1880.

Table with columns: CEREALS, FIBER, SUGAR. Includes sub-sections for BARLEY, RICEWHEAT, INDIAN CORN, OATS, RYE, WHEAT, COTTON, FLAX, HEMP, CASHEW, SORGHUM, MAPLE.

Table with columns: PULSE, POTATOES, TOBACCO, ORCHARDS-1879, NURSERTS, VINEYARDS, MARKET GARDENS, BEES-1879, FOREST PRODUCTS.

Page No. 3
Supervisor's Dist: No. 2
Enumeration Dist: No. 154

S.

NOTE A.—The light dotted perpendicular lines, which divide the spaces intended for numbers on this Schedule, are intended to separate the units, tens, &c., from each other, and the Enumerator should be careful that the figures are written within the small spaces so formed, thus:

7	4	1
4	2	1
3	0	

NOTE B.—Make an affirmative entry by a slanting line (thus /) in one of the three columns 2, 3, and 4, according as the fact is in the case of each farm—in column 2, if the occupier is the owner of the farm; in column 3, if he is the tenant at a fixed money rental; in column 4, if he conducts it for a share of the product.

NOTE C.—Enumerators will observe that there are 104 questions relating to each farm, which are arranged in four successive divisions of each schedule page.

SCHEDULE 2.—Productions of Agriculture in Emmence Township in the County of Shannon, State of Missouri enumerated by me on the 2nd day of June, 1880. Seaton Carr

Enumerator.

Table with columns: OF THE PERSON WHO CONDUCTS THIS FARM, ACRES OF LAND, FARM VALUE, FENCES, LABOR, GRASS LANDS. Includes farm names like Whitworth Lewis J., Crawford David L., and various acreage and value data.

NEAT CATTLE AND THEIR PRODUCTS.

SHEEP.

SWINE.

Table with columns: ON HAND JUNE 1, 1880, MOVEMENT, 1879, MOVEMENT, 1879, SWINE, POLTERY ON HAND JUNE 1ST, 1880, RICE. Includes data for cattle, sheep, and swine movements and production.

CEREALS.

FIBER.

SUGAR.

Table with columns: BARLEY, BUCKWHEAT, INDIAN CORN, OATS, RYE, WHEAT, COTTON, FLAX, HEMP, CANE, SORGHUM, MAPLE. Includes crop area and production data.

PULSE.

ORCHARDS—1879.

NURSERIES.

VINEYARDS.

MARKET GARDENS.

BEES—1879.

FOREST PRODUCTS.

Table with columns: POTATOES, TOBACCO, APPLE, PEACH, NURSERIES, VINEYARDS, MARKET GARDENS, BEES, FOREST PRODUCTS. Includes detailed data for various agricultural products.

Page No. 4
Supervisor's Dist. No. 2
Enumeration Dist. No. 154

S.

NOTE A.—The light dotted perpendicular lines, which divide the spaces intended for numbers on this Schedule, are intended to separate the units, tens, &c., from each other, and the Enumerator should be careful that the figures are written within the small spaces so formed, thus: 7 14, the units in the right-hand small spaces.

NOTE B.—Make an affirmative entry by a slanting line (thus /) in one of the three columns 2, 3, and 4, according as the fact is in the case of each farm—in column 2, if the occupier is the owner of the farm; in column 3, if he is the tenant at a fixed money rental; in column 4, if he conducts it for a share of the product.

NOTE C.—Enumerators will observe that there are 104 questions relating to each farm, which are arranged in four successive divisions of each schedule page.

SCHEDULE 2.—Productions of Agriculture in Eminence Township in the County of Shannon, State of Missouri
enumerated by me on the 2nd day of June, 1880. Seaton Carr
Enumerator.

Table with columns: OF THE PERSON WHO CONDUCTS THIS FARM, ACRES OF LAND, FARM VALUES, FENCES, LABOR, GRASS LANDS. Includes entries for Holland John B., Davis George, Mahan James, Curran John, Munsell Levi W., Thomas Shelby, Dehart Andrew, Lewis Henry, Lewis Eli.

June 4

Table with columns: NEAT CATTLE AND THEIR PRODUCTS, SHEEP, SWINE, RICE. Includes sub-sections for MOVEMENT, 1879, and various production metrics.

Table with columns: CEREALS, FIBER, SUGAR. Includes sub-sections for BARLEY, RYE, WHEAT, COTTON, FLAX, HEMP, CANE, SORGHUM, MAPLE.

Table with columns: PULSE, POTATOES, TOBACCO, ORCHARDS, NURSERIES, VINEYARDS, MARKET GARDENS, BEES, FOREST PRODUCTS. Includes sub-sections for various agricultural products and their production.

D.

[7-306.]

Page No. 5

Supervisor's Dist. No. 2

Enumeration Dist. No. 151

S.

NOTE A.—The light dotted perpendicular lines, which divide the spaces intended for numbers on this Schedule, are intended to separate the units, tens, &c., from each other, and the Enumerator should be careful that the figures are written within the small spaces so formed, thus: 7 4 1, the units in the right-hand small spaces.

NOTE B.—Make an affirmative entry by a slanting line (thus /) in one of the three columns 2, 3, and 4, according as the fact is in the case of each farm—in column 2, if the occupier is the owner of the farm; in column 3, if he is the tenant at a fixed money rental; in column 4, if he conducts it for a share of the product.

NOTE C.—Enumerators will observe that there are 104 questions relating to each farm, which are arranged in four successive divisions of each schedule page.

SCHEDULE 2.—Productions of Agriculture in Emmons Township in the County of Shannon, State of Missouri enumerated by me on the 4th & 5th days of June, 1880. Leaborn Coates Enumerator.

Table with multiple sections: OF THE PERSON WHO CONDUCTS THIS FARM, ACRES OF LAND, FARM VALUES, FENCES, LABOR, GRASS LANDS, NEAT CATTLE AND THEIR PRODUCTS, SHEEP, SWINE, CEREALS, FIBER, SUGAR, PULSES, POTATOES, TOBACCO, ORCHARDS, NURSERIES, VINEYARDS, MARKET GARDENS, BEES, FOREST PRODUCTS.

Page No. 6

Supervisor's Dist: No. 2

Enumeration Dist: No. 154

S.

NOTE A.—The light dotted perpendicular lines, which divide the spaces intended for numbers on this Schedule, are intended to separate the units, tens, &c., from each other, and the Enumerator should be careful that the figures are written within the small spaces so formed, thus: 74, the units 4, the tens 7.

NOTE B.—Make an affirmative entry by a slanting line (thus /) in one of the three columns 2, 3, and 4, according as the fact is in the case of each farm—in column 2, if the occupier is the owner of the farm; in column 3, if he is the tenant at a fixed money rental; in column 4, if he conducts it for a share of the product.

NOTE C.—Enumerators will observe that there are 104 questions relating to each farm, which are arranged in four successive divisions of each schedule page.

SCHEDULE 2.—Productions of Agriculture in Emmence Township in the County of Stannan, State of Missouri enumerated by me on the 5th days of June, 1880. Seaborn Carr Enumerator.

Table with multiple sections: THE PERSON WHO CONDUCTS THIS FARM, ACRES OF LAND, FARM VALUES, FENCES, LABOR, GRASS LANDS, SEAT CATTLE AND THEIR PRODUCTS, SHEEP, SWINE, POULTRY ON HAND, CEREALS, FIBER, SUGAR, MILK, POTATOS, TOBACCO, ORCHARDS, NURSERIES, VINEYARDS, MARKET GARDENS, BEES, FOREST PRODUCTS.

B.

[7-306.]

Page No. 7
Supervisor's Dist. No. 2
Enumeration Dist. No. 154

S.

NOTE A.—The light dotted perpendicular lines, which divide the spaces intended for numbers on this Schedule, are intended to separate the units, tens, &c., from each other, and the Enumerator should be careful that the figures are written within the small spaces so formed, thus:

7	4
4	2
1	3

 the units in the right-hand small spaces.

NOTE B.—Make an affirmative entry by a slanting line (thus /) in one of the three columns 2, 3, and 4, according as the fact is in the case of each farm—in column 2, if the occupier is the owner of the farm; in column 3, if he is the tenant at a fixed money rental; in column 4, if he conducts it for a share of the product.

NOTE C.—Enumerators will observe that there are 104 questions relating to each farm, which are arranged in four successive divisions of each schedule page.

SCHEDULE 2.—Productions of Agriculture in Emmence Township in the County of Merion, State of Missouri enumerated by me on the 7th day of June, 1880. Seaborn Carr Enumerator.

Table with columns: OF THE PERSON WHO CONDUCTS THIS FARM, ACRES OF LAND, FARM VALUES, PRICES, LABOR, GRASS LANDS. Includes entries for West Samuel, Coyle Laura, Park George W, Seaborn William D, Dewees Jasper et., Dequert Abraham M, Whitten James, Campbell Henry, and Whitten James.

Table with columns: NEAT CATTLE AND THEIR PRODUCTS, SHEEP, SWINE, POULTRY ON HAND. Includes sub-sections for Cattle of all ages, Sheep and lambs, and various poultry types.

Table with columns: CEREALS, FIBER, SUGAR. Includes sub-sections for Barley, Buckwheat, Indian Corn, Oats, Rye, Wheat, Cotton, Flax, Hemp, Cassia, Sorghum, and Maple.

Table with columns: PULSE, POTATOES, TOBACCO, ORCHARDS—1879, NURSERIES, VINEYARDS, MARKET GARDENS, BEES—1879, FOREST PRODUCTS. Includes sub-sections for Potatoes (Irish/Sweet), Tobacco, Apples, Peaches, Nurseries, Vineyards, Market Gardens, Bees, and Forest Products.

Page No. 9
Supervisor's Dist. No. 2
Enumeration Dist. No. 154

NOTE A.—The light dotted perpendicular lines, which divide the spaces intended for numbers on this Schedule, are intended to separate the units, tens, &c., from each other, and the Enumerator should be careful that the figures are written within the small spaces so formed, thus:

7	3	1
4	2	1
3	9	

NOTE B.—Make an affirmative entry by a slanting line (thus /) in one of the three columns 2, 3, and 4, according as the fact is in the case of each farm—in column 2, if the occupier is the owner of the farm; in column 3, if he is the tenant at a fixed money rental; in column 4, if he conducts it for a share of the product.

NOTE C.—Enumerators will observe that there are 104 questions relating to each farm, which are arranged in four successive divisions of each schedule page.

SCHEDULE 2.—Productions of Agriculture in Eminence Township in the County of Shannon, State of Massachusetts enumerated by me on the 10th day of June, 1880. Seaborn Carr Enumerator.

Table with columns: OF THE PERSON WHO CONDUCTS THIS FARM, ACRES OF LAND, FARM VALUES, FENCES, LABOR, GRASS LANDS. Includes farm names like Sackett William J, Lowther Robert P, Boyle William H, Nesbit Samuel, Stelfox Thomas, Curry Andrew J, Smith George W.P., Cameron Edward C, Woodward Lyman L, Fry James.

Table with columns: NEAT CATTLE AND THEIR PRODUCTS, SHEEP, SWINE, POULTRY ON HAND, RICE. Includes sub-sections for CATTLE, MOVEMENT, MILK, BUTTER, CHEESE, SHEEP AND LAMBS, SWINE, POULTRY.

Table with columns: CEREALS, FIBER, SUGAR. Includes sub-sections for BARLEY, RUCKWHEAT, INDIAN CORN, OATS, RYE, WHEAT, COTTON, FLAX, HEMP, CANE, SORGHUM, MAPLE.

Table with columns: PULSE, POTATOES, TOBACCO, ORCHARDS, NURSERTS, VINEYARDS, MARKET GARDENS, BEES, FOREST PRODUCTS. Includes sub-sections for PULSE, POTATOES, TOBACCO, APPLE, PEACH, NURSERTS, VINEYARDS, MARKET GARDENS, BEES, FOREST PRODUCTS.

18

Page No. 10

Supervisor's Dist: No. 2

Enumeration Dist: No. 154

S.

NOTE A.—The light dotted perpendicular lines, which divide the spaces intended for numbers on this Schedule, are intended to separate the units, tens, &c., from each other, and the Enumerator should be careful that the figures are written within the small spaces so formed, thus: 74, the units in the right-hand small spaces.

NOTE B.—Make an affirmative entry by a slanting line (thus /) in one of the three columns 2, 3, and 4, according as the fact is in the case of each farm—in column 2, if the occupier is the owner of the farm; in column 3, if he is the tenant at a fixed money rental; in column 4, if he conducts it for a share of the product.

NOTE C.—Enumerators will observe that there are 104 questions relating to each farm, which are arranged in four successive divisions of each schedule page.

SCHEDULE 2.—Productions of Agriculture in Blair Creek Township in the County of Shannon, State of Missouri, enumerated by me on the 12th day of June, 1880. Seaborn Carr

Enumerator.

Table with columns: OF THE PERSON WHO CONDUCTS THIS FARM, ACRES OF LAND, FARM VALUES, FENCES, LABOR, GRASS LANDS. Includes farm names like Crapton, William J. and Viles, Nicholas.

Table with columns: NEAT CATTLE AND THEIR PRODUCTS, MOVEMENT, 1879, SWINE, POULTRY ON HAND. Includes sub-sections for Cattle, Sheep and lambs, and Swine.

Table with columns: CEREALS, BARLEY, WHEAT, CORN, OATS, RYE, FIBER, FLAX, HEMP, SUGAR, CANE, SORGHUM, MAPLE.

Table with columns: PULSE, POTATOES, TORRADO, ORCHARDS, NURSERIES, VINEYARDS, MARKET GARDENS, BEES, FOREST PRODUCTS.

Page No. 11
Supervisor's Dist: No. 2
Enumeration Dist: No. 137

S.

NOTE A.—The light dotted perpendicular lines, which divide the spaces intended for numbers on this Schedule, are intended to separate the units, tens, &c., from each other, and the Enumerator should be careful that the figures are written within the small spaces so formed, thus:

4	2	1
7	4	1
3	9	

NOTE B.—Make an affirmative entry by a slanting line (thus /) in one of the three columns 2, 3, and 4, according as the fact is in the case of each farm—in column 2, if the occupier is the owner of the farm; in column 3, if he is the tenant at a fixed money rental; in column 4, if he conducts it for a share of the product.

NOTE C.—Enumerators will observe that there are 104 questions relating to each farm, which are arranged in four successive divisions of each schedule page.

SCHEDULE 2.—Productions of Agriculture in Blair Creek Township the County of Shannon, State of Missouri enumerated by me on the 13th & 14th days of June, 1880. Seaborn Carr Enumerator.

Table with columns: THE NAME, ACRES OF LAND (Improved, Unimproved), FARM VALUES (Of farm, Of farming implements and machinery, Of Live Stock), FENCES (Cost of building and repairing in 1879), LABOR (Cost of fertilizers, Amount paid for wages for farm labor during 1879, Weeks hired labor in 1879 upon farm), GRASS LANDS (Mown, Not Mown, Hay, Clover Seed, Grass Seed), and Horses and Mules.

Table with columns: NEAT CATTLE AND THEIR PRODUCTS (ON HAND JUNE 1, 1880, MOVEMENT, 1879), SHEEP (MOVEMENT, 1879), and SWINE (ON HAND JUNE 1, 1880, MOVEMENT, 1879).

Table with columns: CEREALS (BARLEY, BUCKWHEAT, INDIAN CORN, OATS, RYE, WHEAT), FIBER (COTTON, FLAX, HEMP), and SUGAR (CANE, SORGHUM, MAPLE).

Table with columns: PULSES, POTATOES, TOBACCO, ORCHARDS (APPLE, PEACH), NURSERIES, VINEYARDS, MARKET GARDENS, BEES, and FOREST PRODUCTS.

Page No. 12

Supervisor's Dist: No. 2

Enumeration Dist: No. 154

S.

NOTE A.—The light dotted perpendicular lines, which divide the spaces intended for numbers on this Schedule, are intended to separate the units, tens, &c., from each other, and the Enumerator should be careful that the figures are written within the small spaces so formed, thus: 74, the units in the right-hand small spaces.

NOTE B.—Make an affirmative entry by a slanting line (thus /) in one of the three columns 2, 3, and 4, according as the fact is in the case of each farm—in column 2, if the occupier is the owner of the farm; in column 3, if he is the tenant at a fixed money rental; in column 4, if he conducts it for a share of the product.

NOTE C.—Enumerators will observe that there are 104 questions relating to each farm, which are arranged in four successive divisions of each schedule page.

SCHEDULE 2.—Productions of Agriculture in Blair's Creek Township in the County of Mamou, State of Missouri

enumerated by me on the 14th 15th days of June, 1880.

Leaborn Carr

Enumerator.

OF THE PERSON WHO CONDUCTS THIS FARM.				ACRES OF LAND.				FARM VALUES.		FENCES.			LABOR.		GRASS LANDS.								
THE NAME.	TENURE.			EMPLOYED.		UNEMPLOYED.		Of farm, including land, fences, and buildings.	Of farming implements and machinery.	Of Live Stock.	Cost of building and repairing in 1879.	Cost of fertilizer purchased in 1879.	Amount paid for wages for farm labor during 1879, including value of board.	Weeks hired labor in 1879 upon farm (and dairy, excluding house-work).	Estimated value of all farm productions sold, consumed, or on hand for 1879.	ACREAGE 1879.		PRODUCTS HARVESTED IN 1879.				Horses and mules on hand June 1, 1880.	Mules and asses on hand June 1, 1880.
	Owner.	Rent for fixed money rental.	Rent for share of products.	No.	No.	No.	No.									Dollars.	Dollars.	Dollars.	Dollars.	Dollars.	Dollars.		
1	2	3	4	5	6	7	8	9	10	11	12	13	14	15	16	17	18	19	20	21	22	23	24
Bush Richard W	/			16	1	64		100	5	50						65							1
Bownds Thomas H	/			12		28		100	5	177	20		4			65							3
Wolf George W	/			12	1	100		100	5	130	25					63							1
Wadkins Martin	/			6		34		50	5	125	25					75							
Wolf Ruth	/			3		27		50		50	30					72							
Bunch David	/			50	1	150		700		75			50			741							3
Wilson John	/			15	1	25		150	25	120	20					100							1
Black Greenberry	/			15		125		200		125						75							
Richardson William	/			25	2	195		400	25	260						100							3
	/			40	1	93		800	65	410						365							5

NEAT CATTLE AND THEIR PRODUCTS.												SHEEP.						SWINE.			POULTRY OR HAND RAISED.			RICK.								
ON HAND JUNE 1, 1880.			MOVEMENT, 1879.									MOVEMENT, 1879.						CLIP, SPRING 1880, SHORN AND TO BE SHORN.			ON HAND JUNE 1, 1880.			SPECIES OF SPRING HATCHING.			EGGS PRODUCED IN 1879.			RICK, 1879.		
Working oxen.	Milk cows.	Other.	Calves dropped.	Purchased.	Sold living.	Slaughtered.	Died, strayed, or otherwise not recovered.	Milk sold, or sent to but for and cheese accounts in 1879.	Butter made on the farm in 1879.	Cheese made on the farm in 1879.	On hand June 1, 1880.	Lambs dropped.	Purchased.	Sold living.	Slaughtered.	Killed by dogs.	Died of disease.	Died of stress of weather.	Pleeces.	Weight.	On hand June 1, 1880.	Farm yard.	Other.	Eggs produced in 1879.	Doz.	Ass.	Lbs.					
25	26	27	28	29	30	31	32	33	34	35	36	37	38	39	40	41	42	43	44	45	46	47	48	49	50	51						

CEREALS.												FIBER.						SUGAR.									
BARLEY.		BUCKWHEAT.		INDIAN CORN.		OATS.		RYS.		WHEAT.		COTTON—1879.		FLAX—1879.				Hemp.		CANE—1879.			SUGAR—1879.			MAPLE—1879.	
Area.	Crop.	Area.	Crop.	Area.	Crop.	Area.	Crop.	Area.	Crop.	Area.	Crop.	Area.	Bales.	Area in Crop.	Seed.	Straw.	Fiber.	Avs.	Tons.	Area in Crop.	Sugar.	Molasses.	Area in Crop.	Sugar.	Molasses.	Sugar.	Molasses.
Acres.	Bush.	Acres.	Bush.	Acres.	Bush.	Acres.	Bush.	Acres.	Bush.	Acres.	Bush.	Acres.	Bales.	Acres.	Bush.	Tons.	Lbs.	Avs.	Tons.	Acres.	Hds.	Galls.	Acres.	Lbs.	Galls.	Lbs.	Galls.
52	53	54	55	56	57	58	59	60	61	62	63	64	65	66	67	68	69	70	71	72	73	74	75	76	77	78	79
					10	150																					
					7	150																					
					7	125																					
					4	110																					
					4	35																					
					50	1800																					
					15	150																					
					12	420				10	60																
					7	500	10	60		20	275																

PULSE.		POTATOES (Irish).		POTATOES (Sweet).		TOBACCO.		ORCHARDS—1879.						NURSERIES.		VINEYARDS.			MARKET GARDENS.		BEES—1879.		FOREST PRODUCTS.	
Cow Peas in 1879.	Beans (Dry) in 1879.	Area.	Crop.	Area.	Crop.	Area.	Crop.	Area.	Bearing trees.	Bushes.	Total value of orchard products of all kinds sold or consumed.	Acres.	Value of produce sold in 1879.	Acres.	Grapes sold in 1879.	Wine made in 1879.	Value of produce sold in 1879.	Acres.	Honey.	Wax.	Amount of wood cut in 1879.	Value of all forest products sold or returned in 1879.		
Bush.	Bush.	Acres.	Bush.	Acres.	Bush.	Acres.	Lbs.	No.	No.	No.	Dollars.	No.	Dollars.	No.	Lbs.	Galls.	Dollars.	Lbs.	Lbs.	Cords.	Dollars.			
80	81	82	83	84	85	86	87	88	89	90	91	92	93	94	95	96	97	98	99	100	101	102	103	104

B

Page No. 13
Supervisor's Dist: No. 2
Enumeration Dist: No. 144

S.

NOTE A.—The light dotted perpendicular lines, which divide the spaces intended for numbers on this Schedule, are intended to separate the units, tens, &c., from each other, and the Enumerator should be careful that the figures are written within the small spaces so formed, thus: 7 1 1, the units in the right-hand small spaces.

NOTE B.—Make an affirmative entry by a slanting line (thus /) in one of the three columns 2, 3, and 4, according as the fact is in the case of each farm—in column 2, if the occupier is the owner of the farm; in column 3, if he is the tenant at a fixed money rental; in column 4, if he conducts it for a share of the product.

NOTE C.—Enumerators will observe that there are 104 questions relating to each farm, which are arranged in four successive divisions of each schedule page.

SCHEDULE 2.—Productions of Agriculture in Leaper Township in the County of Shannon, State of Missouri, enumerated by me on the 21st & 22nd day of June, 1880. Leaborn Carr Enumerator.

Table with columns: OF THE PERSON WHO CONDUCTS THIS FARM, ACRES OF LAND, FARM VALUES, FENCES, LABOR, GRASS LANDS. Includes entries for George James, Andrew Cox, Daniel Burke, Keeling Sarah, Chilton James, Chilton George, Deatherage Alex, Sinclair Charity, and McHenry Nathaniel.

Table with columns: NEAT CATTLE AND THEIR PRODUCTS, MOVEMENT, 1879, SWINE, MOVEMENT, 1879, POULTRY ON HAND, RICE. Includes data for various farm products and livestock movements.

Table with columns: CEREALS, BARLEY, BOCKWHEAT, INDIAN CORN, OATS, RYE, WHEAT, CORN, FLAX, HEMP, CANNON, SUGAR, SORGHUM, MAPLE. Includes data for various crop yields and values.

Table with columns: PULSE, POTATOES, TOBACCO, ORCHARDS, NURSERTES, VINEYARDS, MARKET GARDENS, REES, FOREST PRODUCTS. Includes data for various agricultural products and their values.

B

B.

Page No. 14

Supervisor's Dist: No. 2

Enumeration Dist: No. 154

S.

NOTE A.—The light dotted perpendicular lines, which divide the spaces intended for numbers on this Schedule, are intended to separate the units, tens, &c., from each other, and the Enumerator should be careful that the figures are written within the small spaces so formed, thus: 74, the units in the right-hand small spaces.

NOTE B.—Make an affirmative entry by a slanting line (thus /) in one of the three columns 2, 3, and 4, according as the fact is in the case of each farm—in column 2, if the occupier is the owner of the farm; in column 3, if he is the tenant at a fixed money rental; in column 4, if he conducts it for a share of the product.

NOTE C.—Enumerators will observe that there are 104 questions relating to each farm, which are arranged in four successive divisions of each schedule page.

SCHEDULE 2.—Productions of Agriculture in Jasper Township in the County of Shannon, State of Missouri

enumerated by me on the 22nd days of June, 1880.

Seaborn Carr

Enumerator.

Table with columns: OF THE PERSON WHO CONDUCTS THE FARM, ACRES OF LAND, FARM VALUES, FENCES, LABOR, GRASS LANDS. Includes farm names like Summers Andrew J., Spencer Julia Ann A., Banks Lomas, etc.

Table with columns: NEAT CATTLE AND THEIR PRODUCTS, SHEEP, SWINE, POULTRY ON HAND, EGGS PRODUCED IN 1879, RICE. Includes data for various livestock and products.

Table with columns: CEREALS, FIBER, SUGAR. Includes data for crops like Barley, Buckwheat, Indian Corn, Oats, Rye, Wheat, Flax, Hemp, Cassia, Sorghum, Maple.

Table with columns: PULSES, POTATOES, TOBACCO, ORCHARDS, NURSERIES, VINEYARDS, MARKET GARDENS, BEES, FOREST PRODUCTS. Includes data for various agricultural products and land uses.

Page No. 15
Supervisor's Dist. No. 2
Enumeration Dist. No. 157

S.

NOTE A.—The light dotted perpendicular lines, which divide the spaces intended for numbers on this Schedule, are intended to separate the units, tens, &c., from each other, and the Enumerator should be careful that the figures are written within the small spaces so formed, thus: 74, the units in the right-hand small spaces.

NOTE B.—Make an affirmative entry by a slanting line (thus /) in one of the three columns 2, 3, and 4, according as the fact is in the case of each farm—in column 2, if the occupier is the owner of the farm; in column 3, if he is the tenant at a fixed money rental; in column 4, if he conducts it for a share of the product.

NOTE C.—Enumerators will observe that there are 104 questions relating to each farm, which are arranged in four successive divisions of each schedule page.

SCHEDULE 2.—Productions of Agriculture in Jasper Township in the County of Mendenhall, State of Missouri, enumerated by me on the 23rd of June, 1880. Leaton Carr

Enumerator.

Table with columns: OF THE PERSON WHO CONDUCTS THIS FARM, ACRES OF LAND, FARM VALUES, FENCES, LABOR, GRASS LANDS. Includes farm names like Sillard Thomas M, Patterson John A, etc.

Table with columns: NEAT CATTLE AND THEIR PRODUCTS, MOVEMENT, 1879, SHEEP, MOVEMENT, 1879, SWINE, MOVEMENT, 1879. Includes sub-sections for Cattle of all ages, Sheep and lambs, etc.

Table with columns: CEREALS, FIBER, SUGAR. Includes sub-sections for Barley, Buckwheat, Indian Corn, Oats, Rye, Wheat, Cotton, Flax, Hemp, etc.

Table with columns: PULSES, POTATOES, TOBACCO, ORCHARDS, NURSERIES, VINEYARDS, MARKET GARDENS, BEES, FOREST PRODUCTS. Includes sub-sections for Beans, Peas, Potatoes, Apples, Peaches, etc.

Page No. 16
Supervisor's Dist. No. 2
Enumeration Dist. No. 54

S.

NOTE A.—The light dotted perpendicular lines, which divide the spaces intended for numbers on this Schedule, are intended to separate the units, tens, &c., from each other, and the Enumerator should be careful that the figures are written within the small spaces so formed, thus: 7 4 1, the units in the right-hand small spaces.

NOTE B.—Make an affirmative entry by a slanting line (thus /) in one of the three columns 2, 3, and 4, according as the fact is in the case of each farm—in column 2, if the occupier is the owner of the farm; in column 3, if he is the tenant at a fixed money rental; in column 4, if he conducts it for a share of the product.

NOTE C.—Enumerators will observe that there are 104 questions relating to each farm, which are arranged in four successive divisions of each schedule page.

SCHEDULE 2.—Productions of Agriculture in Jasper Township in the County of Harrison, State of Missouri enumerated by me on the 24th day of June, 1880. Leoborn Carr

Enumerator.

Table with columns: OF THE PERSON WHO CONDUCTS THIS FARM, ACRES OF LAND, FARM VALUES, FENCES, LABOR, GRASS LANDS. Includes entries for Heimer Henry H, Hines James M, Deatherage Jasper, McPhay Elizabeth, McPhay John, and Groswood Clover.

Table with columns: NEAT CATTLE AND THEIR PRODUCTS, MOVEMENT, 1879, ON HAND JUNE 1, 1880, SHEEP, MOVEMENT, 1879, SWINE, POTTERY ON HAND JUNE 1, 1880, RICE, 1879.

Table with columns: CEREALS, BARLEY, BUCKWHEAT, INDIAN CORN, OATS, RYE, WHEAT, CORN, FIBER, FLAX, HEMP, CANE, SORGHUM, MAPLE.

Table with columns: PULSE, POTATOES, TOBACCO, ORCHARDS, NURSERIES, VINEYARDS, MARKET GARDENS, BEES, FOREST PRODUCTS.

Page No. 1

Supervisor's Dist. No. 2
Enumeration Dist. No. 153

S.

NOTE A.—The light dotted perpendicular lines, which divide the spaces intended for numbers on this Schedule, are intended to separate the units, tens, &c., from each other, and the Enumerator should be careful that the figures are written within the small spaces so formed, thus:

7	4	,	the units
4	2	1	
3	7		

NOTE B.—Make an affirmative entry by a slanting line (thus /) in one of the three columns 2, 3, and 4, according as the fact is in the case of each farm—in column 2, if the occupier is the owner of the farm; in column 3, if he is the tenant at a fixed money rental; in column 4, if he conducts it for a share of the product.

NOTE C.—Enumerators will observe that there are 104 questions relating to each farm, which are arranged in four successive divisions of each schedule page.

SCHEDULE 2.—Productions of Agriculture in *Spring Valley Twp* in the County of *Shannon*, State of *Missouri*, enumerated by me on the *5th* day of June, 1880. *Jeff. J. Harte* Enumerator.

Table with columns: OF THE PERSON WHO CONDUCTS THIS FARM, ACRES OF LAND, FARM VALUES, FENCES, LABOR, GRASS LANDS. Includes farm names like Joseph Martin, Reeth Thomas J, Sumner Bone, Farrow Wilson, Sumner John.

Table with columns: NEAT CATTLE AND THEIR PRODUCTS, SHEEP, SWINE, POULTRY ON HAND. Includes sub-sections for Cattle of all ages, Sheep and lambs, etc.

Table with columns: CEREALS, FIBER, SUGAR. Includes sub-sections for Rye, Wheat, Corn, Flax, Hemp, etc.

Table with columns: PULSE, POTATOES, TOBACCO, ORCHARDS, NURSERIES, VINEYARDS, MARKET GARDENS, BEES, FOREST PRODUCTS. Includes sub-sections for Apples, Peaches, etc.

Page No. 2

Supervisor's Dist. No. 2

Enumeration Dist. No. 153

S.

NOTE A.—The light dotted perpendicular lines, which divide the spaces intended for numbers on this Schedule, are intended to separate the units, tens, &c., from each other, and the Enumerator should be careful that the figures are written within the small spaces so formed, thus: 74, the units in the right-hand small spaces.

NOTE B.—Make an affirmative entry by a slanting line (thus /) in one of the three columns 2, 3, and 4, according as the fact is in the case of each farm—in column 2, if the occupier is the owner of the farm; in column 3, if he is the tenant at a fixed money rental; in column 4, if he conducts it for a share of the product.

NOTE C.—Enumerators will observe that there are 104 questions relating to each farm, which are arranged in four successive divisions of each schedule page.

SCHEDULE 2.—Productions of Agriculture in Spring Valley Twp. in the County of Shannon, State of Missouri enumerated by me on the 4th day of June, 1880.

Enumerated by J. J. [Signature]

Table with columns: OF THE PERSON WHO CONDUCTS THIS FARM, ACRES OF LAND, FARM VALUES, FENCES, LABOR, GRASS LANDS. Includes farm names like Randolph Walter J, Benier John, Orchard Alex, etc.

Table with columns: MEAT CATTLE AND THEIR PRODUCTS, SHEEP, SWINE, POULTRY ON HAND, EGGS PRODUCED IN 1879, RICE. Includes sub-sections for CATTLE MOVEMENT, SHEEP MOVEMENT, etc.

Table with columns: CEREALS, FIBER, SUGAR. Includes sub-sections for BARLEY, BUCKWHEAT, INDIAN CORN, OATS, RYE, WHEAT, COTTON, FLAX, HEMP, CANE, SORGHUM, MAPLE.

Table with columns: PULSES, POTATOES, TOBACCO, ORCHARDS, NURSERTS, VINEYARDS, MARKET GARDENS, BEES, FOREST PRODUCTS. Includes sub-sections for POTATOES (Irish/Sweet), TOBACCO, APPLE, PEACH, etc.

Page No. 3
Supervisor's Dist: No. 2
Enumeration Dist: No. 153

S.

NOTE A.—The light dotted perpendicular lines, which divide the spaces intended for numbers on this Schedule, are intended to separate the units, tens, &c., from each other, and the Enumerator should be careful that the figures are written within the small spaces so formed, thus: 74, the units in the right-hand small spaces.

NOTE B.—Make an affirmative entry by a slanting line (thus /) in one of the three columns 2, 3, and 4, according as the fact is in the case of each farm—in column 2, if the occupier is the owner of the farm; in column 3, if he is the tenant at a fixed money rental; in column 4, if he conducts it for a share of the product.

NOTE C.—Enumerators will observe that there are 104 questions relating to each farm, which are arranged in four successive divisions of each schedule page.

SCHEDULE 2.—Productions of Agriculture in Spring Valley Twp in the County of Chambers, State of Missouri enumerated by me on the 4th day of June, 1880.

Jeff. P. Potts
Enumerator.

OF THE PERSON WHO CONDUCTS THIS FARM.				ACRES OF LAND.				FARM VALUES.			FENCES.		LABOR.		GRASS LANDS.									
THE NAME.				IMPROVED.				IMPROVED.			Of Live Stock.		Amount paid for wages for farm labor during 1879, including value of board.		Estimated value of all farm productions (sold, consumed, or on hand) for 1879.	ACRES 1879.				PRODUCTS HARVESTED IN 1879.				
1	2	3	4	No.	No.	No.	No.	Dollars.	Dollars.	Dollars.	Dollars.	Dollars.	Dollars.	White.		Colored.	Mown.	Not Mown.	Hay.	Clover Seed.	Grass Seed.	Horses of all ages on hand June 1, 1880.	Mules and Asses of all ages on hand June 1, 1880.	
1	<i>Smith, Nelson</i>	/		60		245		1500	52	400	200		80	10	400		18	19	20	21	22	23	24	
																							4	1

NEAT CATTLE AND THEIR PRODUCTS.										SHEEP.										SWINE.				POULTRY ON HAND JUNE 1ST, 1880, EXCLUSIVE OF SPRING HATCHING.										
ON HAND JUNE 1, 1880.										MOVEMENT, 1879.										MOVEMENT, 1879.				CLIP, SPRING 1880, SHORN AND TO BE SHORN.				On hand June 1, 1880.				RICE, 1879.		
Working oxen.	Milk cows.	Other.	Cattle dropped.	Purchased.	Sold during.	Slughtered.	Died, starved, and frozen, and not recovered.	Milk sold or sent to market for sale in 1879.	Turned manure on the farm in 1879.	Cheese made on the farm in 1879.	On hand June 1, 1880.	Lambs dropped.	Purchased.	Sold during.	Slughtered.	Killed by dogs.	Died of disease.	Died of stress of weather.	Fleeces.	Weight.	Fleeces.	Weight.	On hand June 1, 1880.	Ram-yards.	Other.	Roots produced in 1879.	Acres.	Libs.						
25	26	27	28	29	30	31	32	33	34	35	36	37	38	39	40	41	42	43	44	45	46	47	48	49	50	51	52	53						
	4	8	4						100		35	10		9		4	5		25	40		46	47	48	49	50	51							

CEREBALS.												FIBER.										SUGAR.																					
COTTON—1879.												FLAX—1879.										CANE—1879.										SORGHUM—1879.										MAPLE—1879.	
Area.	Crop.	Area.	Crop.	Area.	Crop.	Area.	Crop.	Area.	Crop.	Area.	Crop.	Area.	Crop.	Area.	Crop.	Area.	Crop.	Area.	Crop.	Area.	Crop.	Area.	Crop.	Area.	Crop.	Area.	Crop.	Area.	Crop.	Area.	Crop.	Area.	Crop.	Area.	Crop.	Area.	Crop.						
52	53	54	55	56	57	58	59	60	61	62	63	64	65	66	67	68	69	70	71	72	73	74	75	76	77	78	79																
				30	500																																						

PULSE.		POTATOES (Irish).				POTATOES (Sweet).				TOBACCO.		ORCHARDS—1879.						NURSERTS.		VINYARDS.			MARKET GARDENS.		BEES—1879.		FOREST PRODUCTS.				
Cow Peas in 1879.	Beans (Dry) in 1879.	Area.	Crop.	Area.	Crop.	Area.	Crop.	Area.	Crop.	Area.	Crop.	Area.	Bearing trees.	Bushes.	Area.	Bearing trees.	Bushes.	Total value of orchard products of all kinds sold or consumed.	Area.	Value of produce sold in 1879.	Area.	Grapes sold in 1879.	Wine made in 1879.	Value of produce sold in 1879.	Honey.	Wax.	Amount of wood cut in 1879.	Value of all forest products sold or consumed in 1879.			
80	81	82	83	84	85	86	87	88	89	90	91	92	93	94	95	96	97	98	99	100	101	102	103	104	105	106	107	108	109	110	
										50	1	130	100	1	100			50							100	101	102	103	104		

Page No. 4

Supervisor's Dist: No. 2

Enumeration Dist: No. 155

S.

NOTE A.—The light dotted perpendicular lines, which divide the spaces intended for numbers on this Schedule, are intended to separate the units, tens, &c., from each other, and the Enumerator should be careful that the figures are written within the small spaces so formed, thus: 174, the units in the right-hand small spaces.

NOTE B.—Make an affirmative entry by a slanting line (thus /) in one of the three columns 2, 3, and 4, according as the fact is in the case of each farm—in column 2, if the occupier is the owner of the farm; in column 3, if he is the tenant at a fixed money rental; in column 4, if he conducts it for a share of the product.

NOTE C.—Enumerators will observe that there are 104 questions relating to each farm, which are arranged in four successive divisions of each schedule page.

SCHEDULE 2.—Productions of Agriculture in Spring Valley Twp in the County of Shannon, State of Missouri, enumerated by me on the 5th day of June, 1880. J. J. [Signature] Enumerator.

Table with 104 columns and 10 rows. Columns include: THE NAME, ACRES OF LAND (TERRILL, IMPROVED, UNIMPROVED), FARM VALUES, FENCES, LABOR, GRASS LANDS, NEAT CATTLE AND THEIR PRODUCTS, CEREALS, FIBER, SUGAR, PULSE, POTATOES, TOBACCO, ORCHARDS, NURSERIES, VINEYARDS, MARKET GARDENS, BEEHIVES, FOREST PRODUCTS.

Page No. 2
Supervisor's Dist. No. 2
Enumeration Dist. No. 155

NOTE A.—The light dotted perpendicular lines, which divide the spaces intended for numbers on this Schedule, are intended to separate the units, tens, &c., from each other, and the Enumerator should be careful that the figures are written within the small spaces so formed, thus: 74, the units in the right-hand small spaces.

NOTE B.—Make an affirmative entry by a slanting line (thus /) in one of the three columns 2, 3, and 4, according as the fact is in the case of each farm—in column 2, if the occupier is the owner of the farm; in column 3, if he is the tenant at a fixed money rental; in column 4, if he conducts it for a share of the product.

NOTE C.—Enumerators will observe that there are 104 questions relating to each farm, which are arranged in four successive divisions of each schedule page.

SCHEDULE 2.—Productions of Agriculture in Spring Valley Twp in the County of Shannon, State of Missouri enumerated by me on the 5th day of June, 1880.

Jeffrey R. [Signature]
Enumerator.

Table with multiple sections: OF THE PERSON WHO CONDUCTS THIS FARM, ACRES OF LAND, FARM VALUES, FENCES, LABOR, GRASS LANDS, NEAT CATTLE AND THEIR PRODUCTS, SHEEP, SWINE, CEREALS, FIBER, SUGAR, PULSES, POTATOES, TOBACCO, ORCHARDS, NURSERIES, VINEYARDS, MARKET GARDENS, BEES, FOREST PRODUCTS. Includes handwritten entries for 'Rud. David' and 'Lynch, Daniel'.

Page No. 6

Supervisor's Dist. No. 2

Enumeration Dist. No. 155

S.

NOTE A.—The light dotted perpendicular lines, which divide the spaces intended for numbers on this Schedule, are intended to separate the units, tens, &c., from each other, and the Enumerator should be careful that the figures are written within the small spaces so formed, thus: 174, the units in the right-hand small spaces.

NOTE B.—Make an affirmative entry by a slanting line (thus /) in one of the three columns 2, 3, and 4, according as the fact is in the case of each farm—in column 2, if the occupier is the owner of the farm; in column 3, if he is the tenant at a fixed money rental; in column 4, if he conducts it for a share of the product.

NOTE C.—Enumerators will observe that there are 104 questions relating to each farm, which are arranged in four successive divisions of each schedule page.

SCHEDULE 2.—Productions of Agriculture in Spring Valley Twp in the County of Shannon, State of Missouri enumerated by me on the 7th day of June, 1880.

Jeffrey B. ... Enumerator.

Table with columns: OF THE PERSON WHO CONDUCTS THIS FARM, ACRES OF LAND, FARM VALUES, FENCES, LABOR, GRASS LANDS. Includes farm names like Dyer, George C., Lunch, John, Harris, Thomas K., etc.

Table with columns: NEAT CATTLE AND THEIR PRODUCTS, SHEEP, SWINE. Includes sub-sections for OX HAND, MOVEMENT, 1879, and various livestock statistics.

Table with columns: CEREALS, FIBER, SUGAR. Includes sub-sections for BARLEY, RUCKWHAAT, INDIAN CORN, OATS, RYE, WHEAT, COTTON, FLAX, HEMP, CANE, SOLEHUN, MAPLE.

Table with columns: PULSE, POTATOES, TORRICO, ORCHARDS-1879, NURSERIES, VINEYARDS, MARKET GARDENS, BEES-1879, FOREST PRODUCTS. Includes sub-sections for Cow Peas, Beans, Potatoes, Apples, Peaches, etc.

Page No. 7
Supervisor's Dist. No. 2
Enumeration Dist. No. 153

NOTE A.—The light dotted perpendicular lines, which divide the spaces intended for numbers on this Schedule, are intended to separate the units, tens, &c., from each other, and the Enumerator should be careful that the figures are written within the small spaces so formed, thus: 74, the units in the right-hand small spaces.

NOTE B.—Make an affirmative entry by a slanting line (thus /) in one of the three columns 2, 3, and 4, according as the fact is in the case of each farm—in column 2, if the occupier is the owner of the farm; in column 3, if he is the tenant at a fixed money rental; in column 4, if he conducts it for a share of the product.

NOTE C.—Enumerators will observe that there are 104 questions relating to each farm, which are arranged in four successive divisions of each schedule page.

SCHEDULE 2.—Productions of Agriculture in Casto Township in the County of Shannon, State of Missouri enumerated by me on the 15th day of June, 1880.

Enumerator.

Table with multiple sections: 'OF THE PERSON WHO CONDUCTS THIS FARM', 'ACRES OF LAND', 'FARM VALUES', 'FENCES', 'LABOR', 'GRASS LANDS', 'NEAT CATTLE AND THEIR PRODUCTS', 'SHEEP', 'SWINE', 'POULTRY ON HAND', 'CEREALS', 'FIBER', 'SUGAR', 'MAPLE', 'PULSE', 'POTATOES', 'TOBACCO', 'ORCHARDS', 'NURSERY', 'VINEYARDS', 'MARKET GARDENS', 'BEEHIVES', 'FOREST PRODUCTS'. Includes handwritten entries for various farms and agricultural data.

Page No. 8

Supervisor's Dist. No. 2

Enumeration Dist. No. 155

S.

NOTE A.—The light dotted perpendicular lines, which divide the spaces intended for numbers on this Schedule, are intended to separate the units, tens, &c., from each other, and the Enumerator should be careful that the figures are written within the small spaces so formed, thus: 74, the units in the right-hand small spaces.

NOTE B.—Make an affirmative entry by a slanting line (thus /) in one of the three columns 2, 3, and 4, according as the fact is in the case of each farm—in column 2, if the occupier is the owner of the farm; in column 3, if he is the tenant at a fixed money rental; in column 4, if he conducts it for a share of the product.

NOTE C.—Enumerators will observe that there are 104 questions relating to each farm, which are arranged in four successive divisions of each schedule page.

SCHEDULE 2.—Productions of Agriculture in Costo Parish in the County of St. Charles, State of Missouri enumerated by me on the 16th day of June, 1880.

Table with columns for Farm Name, Acres of Land (Improved/Unimproved), Farm Values, Fences, Labor, Grass Lands, and various agricultural products (Cattle, Sheep, Swine, Poultry, Rice, Cereals, Fibers, Sugar, etc.). Includes handwritten entries for farms like 'Palmira, John' and 'Lester, Elizabeth'.

Handwritten initials 'PB' at the bottom center of the page.

Page No. 9
Supervisor's Dist. No. 2
Enumeration Dist. No. 155

S.

NOTE A.—The light dotted perpendicular lines, which divide the spaces intended for numbers on this Schedule, are intended to separate the units, tens, &c., from each other, and the Enumerator should be careful that the figures are written within the small spaces so formed, thus: 7 14, the units in the right-hand small spaces.

NOTE B.—Make an affirmative entry by a slanting line (thus /) in one of the three columns 2, 3, and 4, according as the fact is in the case of each farm—in column 2, if the occupier is the owner of the farm; in column 3, if he is the tenant at a fixed money rental; in column 4, if he conducts it for a share of the product.

NOTE C.—Enumerators will observe that there are 104 questions relating to each farm, which are arranged in four successive divisions of each schedule page.

SCHEDULE 2.—Productions of Agriculture in Casto Townships in the County of Shannon, State of Missouri, enumerated by me on the 16th day of June, 1880.

Jefferson
Enumerator.

Table with columns: OF THE PERSON WHO CONDUCTS THIS FARM, ACRES OF LAND, FARM VALUES, FENCES, LABOR, GRASS LANDS. Includes handwritten entries for 'Kiley, P.' and 'Jewell, C. C.' with various numerical data.

Table with columns: NEAT CATTLE AND THEIR PRODUCTS, SHEEP, SWINE, FOWLERY ON HAND. Includes handwritten entries for cattle and sheep counts and values.

Table with columns: CEREALS, FIBER, SUGAR. Includes handwritten entries for crop areas and yields.

Table with columns: PULSE, POTATOES, TOBACCO, ORCHARDS, NURSERIES, VINEYARDS, MARKET GARDENS, BEES, FOREST PRODUCTS. Includes handwritten entries for various agricultural products.

B.

Page No. 10

Supervisor's Dist. No. 2

Enumeration Dist. No. 153

S.

NOTE A.—The light dotted perpendicular lines, which divide the spaces intended for numbers on this Schedule, are intended to separate the units, tens, &c., from each other, and the Enumerator should be careful that the figures are written within the small spaces so formed, thus: 74, the units in the right-hand small spaces.

NOTE B.—Make an affirmative entry by a slanting line (thus /) in one of the three columns 2, 3, and 4, according as the fact is in the case of each farm—in column 2, if the occupier is the owner of the farm; in column 3, if he is the tenant at a fixed money rental; in column 4, if he conducts it for a share of the product.

NOTE C.—Enumerators will observe that there are 104 questions relating to each farm, which are arranged in four successive divisions of each schedule page.

SCHEDULE 2.—Productions of Agriculture in East Township in the County of Shannon, State of Missouri enumerated by me on the 17th day of June, 1880.

Jeff D. Porter
Enumerator.

Table with columns: OF THE PERSON WHO CONDUCTS THIS FARM, ACRES OF LAND, FARM VALUES, FRENCES, LABOR, GRASS LANDS. Includes farm names like 'Emery, Wm. A.', 'Emery, Wm. A. & Son', etc.

Table with columns: NEAT CATTLE AND THEIR PRODUCTS, SWINE, POULTRY ON HAND. Includes sub-sections for Cattle of all ages, Sheep and lambs, Pigs, etc.

Table with columns: CEREALS, FIBER, SUGAR. Includes sub-sections for BARLEY, RICE, WHEAT, CORN, etc.

Table with columns: PULSE, POTATOES, TOBACCO, ORCHARDS, NURSERIES, VINEYARDS, MARKET GARDENS, BEES, FOREST PRODUCTS. Includes sub-sections for Beans, Peas, Apples, Peaches, etc.

1880-1881 July 23, 1880 C.

Page No. 11
Supervisor's Dist. No. 2
Enumeration Dist. No. 155

NOTE A.—The light dotted perpendicular lines, which divide the spaces intended for numbers on this Schedule, are intended to separate the units, tens, &c., from each other, and the Enumerator should be careful that the figures are written within the small spaces so formed, thus: 4:2:1, the units in the right-hand small spaces.

NOTE B.—Make an affirmative entry by a slanting line (thus /) in one of the three columns 2, 3, and 4, according as the fact is in the case of each farm—in column 2, if the occupier is the owner of the farm; in column 3, if he is the tenant at a fixed money rental; in column 4, if he conducts it for a share of the product.

NOTE C.—Enumerators will observe that there are 104 questions relating to each farm, which are arranged in four successive divisions of each schedule page.

SCHEDULE 2.—Productions of Agriculture in East Township in the County of Shannon, State of Missouri enumerated by me on the 18th day of June, 1880. Jeff Sharts Enumerator.

Table with columns: THE NAME, ACRES OF LAND (TENSE, IMPROVED, UNIMPROVED), FARM VALUES (Of farm, Of farming implements and machinery, Of Live Stock), REPAIRS, LABOR (White, Colored), GRASS LANDS (Mown, Not Mown, Hay, Clover Seed, Grass Seed), and Horse and Mule and Asses.

Table with columns: NEAT CATTLE AND THEIR PRODUCTS (ON HAND JUNE 1, 1880, MOVEMENT, 1879), SHEEP (MOVEMENT, 1879), SWINE (ON HAND JUNE 1, 1880, MOVEMENT, 1879), and POULTRY ON HAND JUNE 1, 1880.

Table with columns: CEREALS (BARLEY, RYE, WHEAT, CORN, OATS), FIBER (Cotton), and SUGAR (Cane).

Table with columns: PULSE, POTATOES, TOBACCO, ORCHARDS (APPLE, PEACH), NURSERTS, VINEYARDS, MARKET GARDENS, BEES, and FOREST PRODUCTS.

B

Page No. 12
Supervisor's Dist: No. 2
Enumeration Dist: No. 155

NOTE A.—The light dotted perpendicular lines, which divide the spaces intended for numbers on this Schedule, are intended to separate the units, tens, &c., from each other, and the Enumerator should be careful that the figures are written within the small spaces so formed, thus: 74, the units in the right-hand small spaces.
NOTE B.—Make an affirmative entry by a slanting line (thus /) in one of the three columns 2, 3, and 4, according as the fact is in the case of each farm—in column 2, if the occupier is the owner of the farm; in column 3, if he is the tenant at a fixed money rental; in column 4, if he conducts it for a share of the product.
NOTE C.—Enumerators will observe that there are 104 questions relating to each farm, which are arranged in four successive divisions of each schedule page.

SCHEDULE 2.—Productions of Agriculture in Jackson Township in the County of Shannon, State of Missouri enumerated by me on the 19th day of June, 1880.

Table with columns for THE NAME, ACRES OF LAND (Improved, Unimproved), FARM VALUES, FENCES, LABOR, GRASS LANDS, NEAT CATTLE AND THEIR PRODUCTS, SHEEP, SWINE, RICE, CEREALS, FIBER, SUGAR, PULSE, POTATOES, TOBACCO, ORCHARDS, NURSERIES, VINEYARDS, MARKET GARDENS, BEES, FOREST PRODUCTS.

60

Page No. 13
Supervisor's Dist. No. 2
Enumeration Dist. No. 155

S.

NOTE A.—The light dotted perpendicular lines, which divide the spaces intended for numbers on this Schedule, are intended to separate the units, tens, &c., from each other, and the Enumerator should be careful that the figures are written within the small spaces so formed, thus: 74, the units in the right-hand small spaces.

NOTE B.—Make an affirmative entry by a slanting line (thus /) in one of the three columns 2, 3, and 4, according as the fact is in the case of each farm—in column 2, if the occupier is the owner of the farm; in column 3, if he is the tenant at a fixed money rental; in column 4, if he conducts it for a share of the product.

NOTE C.—Enumerators will observe that there are 104 questions relating to each farm, which are arranged in four successive divisions of each schedule page.

SCHEDULE 2.—Productions of Agriculture in Jackson Township in the County of Shannon, State of Missouri, enumerated by me on the 22nd day of June, 1880.

Jeff. G. [Signature] Enumerator.

Table with multiple sections: 'OF THE PERSON WHO CONDUCTS THIS FARM', 'ACRES OF LAND', 'FARM VALUES', 'FENCES', 'LABOR', 'GRASS LANDS', 'NEAT CATTLE AND THEIR PRODUCTS', 'SHEEP', 'SWINE', 'POULTRY ON HAND', 'CEREALS', 'FIBER', 'SUGAR', 'PULSE', 'POTATOES', 'TOBACCO', 'ORCHARDS', 'NURSERIES', 'VINEYARDS', 'MARKET GARDENS', 'BEES', 'FOREST PRODUCTS'. Each section contains detailed data for 10 farms, including acreage, values, and production quantities.

B.

Page No. 14
Supervisor's Dist: No. 2
Enumeration Dist: No. 153

S.

NOTE A.—The light dotted perpendicular lines, which divide the spaces intended for numbers on this Schedule, are intended to separate the units, tens, &c., from each other, and the Enumerator should be careful that the figures are written within the small spaces so formed, thus: 74, the units in the right-hand small spaces.

NOTE B.—Make an affirmative entry by a slanting line (thus /) in one of the three columns 2, 3, and 4, according as the fact is in the case of each farm—in column 2, if the occupier is the owner of the farm; in column 3, if he is the tenant at a fixed money rental; in column 4, if he conducts it for a share of the product.

NOTE C.—Enumerators will observe that there are 104 questions relating to each farm, which are arranged in four successive divisions of each schedule page.

SCHEDULE 2.—Productions of Agriculture in Jackson Township in the County of Shannon, State of Missouri enumerated by me on the 23rd day of June, 1880. J. J. [Signature] Enumerator.

Table with 104 columns and 10 rows. Columns include: THE NAME, ACRES OF LAND (Improved, Unimproved), FARM VALUES (Land, Buildings, Stock), LABOR (Wages, Hired Labor), GRASS LANDS (Mown, Not Mown), NEAT CATTLE AND THEIR PRODUCTS (Working, Milch, Other), SHEEP (Lamb, Sheep), SWINE (Pigs, Sows), POULTRY ON HAND, EGGS PRODUCED, CEREALS (Barley, Buckwheat, Indian Corn, Oats, Rye, Wheat), FIBER (Cotton, Flax, Hemp), SUGAR (Cane, Sorghum, Maple), PULSES, POTATOES, TOBACCO, ORCHARDS (Apple, Peach), NURSERIES, VINEYARDS, MARKET GARDENS, BEES, FOREST PRODUCTS.

Page No. 15
Supervisor's Dist: No. 2
Enumeration Dist: No. 155

NOTE A.—The light dotted perpendicular lines, which divide the spaces intended for numbers on this Schedule, are intended to separate the units, tens, &c., from each other, and the Enumerator should be careful that the figures are written within the small spaces so formed, thus:

7	4
4	2
1	3

NOTE B.—Make an affirmative entry by a slanting line (thus /) in one of the three columns 2, 3, and 4, according as the fact is in the case of each farm—in column 2, if the occupier is the owner of the farm; in column 3, if he is the tenant at a fixed money rental; in column 4, if he conducts it for a share of the product.

NOTE C.—Enumerators will observe that there are 104 questions relating to each farm, which are arranged in four successive divisions of each schedule page.

SCHEDULE 2.—Productions of Agriculture in Jackson Township in the County of Shannon, State of Missouri, enumerated by me on the 23rd day of June, 1880.

Jeff. [Signature] Enumerator.

Table with columns: OF THE PERSON WHO CONDUCTS THIS FARM, ACRES OF LAND, FARM VALUES, FENCES, LABOR, GRASS LANDS. Includes farm names like Sumner, John and values for land, stock, and labor.

Table with columns: NEAT CATTLE AND THEIR PRODUCTS, MOVEMENT, 1879, SHEEP, MOVEMENT, 1879, SWINE, MOVEMENT, 1879. Includes data for cattle, sheep, and swine movements and products.

Table with columns: CEREALS, BALEY, BOCKWHEAT, INDIAN CORN, OATS, RYE, WHEAT, CORN, FIBER, FLAX, HEMP, SUGAR, CANE, SORGHUM, MAPLE. Includes crop areas and yields.

Table with columns: PULSE, POTATOES, TOBACCO, ORCHARDS, NURSERTIES, VINEYARDS, MARKET GARDENS, BEES, FOREST PRODUCTS. Includes data for various agricultural products and forest yields.

Page No. 16

Supervisor's Dist: No. 2

Enumeration Dist: No. 155

S.

NOTE A.—The light dotted perpendicular lines, which divide the spaces intended for numbers on this Schedule, are intended to separate the units, tens, &c., from each other, and the Enumerator should be careful that the figures are written within the small spaces so formed, thus: 7 1 4, the units in the right-hand small spaces.

NOTE B.—Make an affirmative entry by a slanting line (thus /) in one of the three columns 2, 3, and 4, according as the fact is in the case of each farm—in column 2, if the occupier is the owner of the farm; in column 3, if he is the tenant at a fixed money rental; in column 4, if he conducts it for a share of the product.

NOTE C.—Enumerators will observe that there are 104 questions relating to each farm, which are arranged in four successive divisions of each schedule page.

SCHEDULE 2.—Productions of Agriculture in Jackson Township in the County of Shannon, State of Missouri, enumerated by me on the 24th day of June, 1880.

Jeff. J. [Signature] Enumerator.

Table with multiple sections: OF THE PERSON WHO CONDUCTS THIS FARM, ACRES OF LAND, FARM VALUES, FENCES, LABOR, GRASS LANDS, NEAT CATTLE AND THEIR PRODUCTS, SHEEP, SWINE, CEREALS, FIBER, SUGAR, PULSES, POTATOES, TOBACCO, ORCHARDS, NURSERIES, VINEYARDS, MARKET GARDENS, BEES, FOREST PRODUCTS.

Page No. 17
Supervisor's Dist: No. 2
Enumeration Dist: No. 155

S.

NOTE A.—The light dotted perpendicular lines, which divide the spaces intended for numbers on this Schedule, are intended to separate the units, tens, &c., from each other, and the Enumerator should be careful that the figures are written within the small spaces so formed, thus: 4 2 1 / 3 1 9

NOTE B.—Make an affirmative entry by a slanting line (thus /) in one of the three columns 2, 3, and 4, according as the fact is in the case of each farm—in column 2, if the occupier is the owner of the farm; in column 3, if he is the tenant at a fixed money rental; in column 4, if he conducts it for a share of the product.

NOTE C.—Enumerators will observe that there are 104 questions relating to each farm, which are arranged in four successive divisions of each schedule page.

SCHEDULE 2.—Productions of Agriculture in Jackson Township in the County of Shannon, State of Missouri, enumerated by me on the 24th day of June, 1880. Jeff. D. [Signature] Enumerator.

Table with columns: THE NAME, TENURE, ACRES OF LAND (IMPROVED, UNIMPROVED), FARM VALUES, FENCES, LABOR, GRASS LANDS. Includes handwritten entry for 'Hall, Preston' with values like 35, 4, 70, 500, 50, 175, 450.

Table with columns: NEAT CATTLE AND THEIR PRODUCTS, SHEEP, SWINE, POULTRY ON HAND. Includes handwritten entries for cattle counts and sheep weights.

Table with columns: CEREALS, FIBER, SUGAR. Includes handwritten entries for crop areas and yields.

Table with columns: ORCHARDS—1879, NURSERTIES, VINEYARDS, MARKET GARDENS, BEES—1879, FOREST PRODUCTS. Includes handwritten entries for orchard and vineyard data.

B. Page No. 18
Supervisor's Dist. No. 255
Enumeration Dist. No. 155 S.

NOTE A.—The light dotted perpendicular lines, which divide the spaces intended for numbers on this Schedule, are intended to separate the units, tens, &c., from each other, and the Enumerator should be careful that the figures are written within the small spaces so formed, thus: 7 4 1, the units in the right-hand small spaces.

NOTE B.—Make an affirmative entry by a slanting line (thus /) in one of the three columns 2, 3, and 4, according as the fact is in the case of each farm—in column 2, if the occupier is the owner of the farm; in column 3, if he is the tenant at a fixed money rental; in column 4, if he conducts it for a share of the product.

NOTE C.—Enumerators will observe that there are 104 questions relating to each farm, which are arranged in four successive divisions of each schedule page.

SCHEDULE 2.—Productions of Agriculture in Jackson Township in the County of Shannon, State of Missouri, enumerated by me on the 20th day of June, 1880. J. J. [Signature] Enumerator.

Table with columns: OF THE PERSON WHO CONDUCTS THE FARM, ACRES OF LAND, FARM VALUES, FENCES, LABOR, GRASS LANDS, NEAT CATTLE AND THEIR PRODUCTS, SHEEP, SWINE, ORCHARD PRODUCTS, PULSES, ORCHARDS-1879, NURSERIES, VINEYARDS, MARKET GARDENS, BEES-1879, FOREST PRODUCTS. Includes farm names like Hall, Charles and Cole, James.

B

Received July 26, 1880.

Page No. 19
Supervisor's Dist: No. 2
Enumeration Dist: No. 105

S.

NOTE A.—The light dotted perpendicular lines, which divide the spaces intended for numbers on this Schedule, are intended to separate the units, tens, &c., from each other, and the Enumerator should be careful that the figures are written within the small spaces so formed, thus: 74, the units in the right-hand small spaces.

NOTE B.—Make an affirmative entry by a slanting line (thus /) in one of the three columns 2, 3, and 4, according as the fact is in the case of each farm—in column 2, if the occupier is the owner of the farm; in column 3, if he is the tenant at a fixed money rental; in column 4, if he conducts it for a share of the product.

NOTE C.—Enumerators will observe that there are 104 questions relating to each farm, which are arranged in four successive divisions of each schedule page.

SCHEDULE 2.—Productions of Agriculture in Jackson Township in the County of Shannon, State of Missouri enumerated by me on the 25th day of June, 1880. J. P. [Signature] Enumerator.

Table with columns: OF THE PERSON WHO CONDUCTS THIS FARM, ACRES OF LAND, FARM VALUES, FENCES, LABOR, GRASS LANDS. Includes farm names like Summers, Spivey, Williams, and Lewis.

Table with columns: NEAT CATTLE AND THEIR PRODUCTS, SWINE, POULTRY ON HAND. Includes sub-sections for MOVEMENT, 1879 and SLEEP.

Table with columns: CEREALS, FIBER, SUGAR. Includes sub-sections for BARLEY, BUCKWHEAT, INDIAN CORN, OATS, RYE, WHEAT, COTTON, FLAX, HEMP, CANE, SORGHUM, MAPLE.

Table with columns: PULSES, POTATOES, TOBACCO, ORCHARDS, NURSERIES, VINEYARDS, MARKET GARDENS, BEES, FOREST PRODUCTS. Includes sub-sections for APPLE, PEACH, and various agricultural products.

Page No. 1
Supervisor's Dist: No.
Enumeration Dist: No.

S.

NOTE A.—The light dotted perpendicular lines, which divide the spaces intended for numbers on this Schedule, are intended to separate the units, tens, &c., from each other, and the Enumerator should be careful that the figures are written within the small spaces so formed, thus: 124, the units in the right-hand small spaces.

NOTE B.—Make an affirmative entry by a slanting line (thus /) in one of the three columns 2, 3, and 4, according as the fact is in the case of each farm—in column 2, if the occupier is the owner of the farm; in column 3, if he is the tenant at a fixed money rental; in column 4, if he conducts it for a share of the product.

NOTE C.—Enumerators will observe that there are 104 questions relating to each farm, which are arranged in four successive divisions of each schedule page.

SCHEDULE 2.—Productions of Agriculture in Bowland T. in the County of Shannon, State of Missouri, enumerated by me on the 7th day of June, 1880. Wm. Silas Rumburg Enumerator.

Table with multiple sections: 'OF THE PERSON WHO CONDUCTS THIS FARM', 'ACRES OF LAND', 'FARM VALUES', 'FENCES', 'LABOR', 'GRASS LANDS', 'NEAT CATTLE AND THEIR PRODUCTS', 'SHEEP', 'SWINE', 'CROPS', 'FIBER', 'SUGAR', 'ORCHARDS', 'PULSES', 'POTATOES', 'TOBACCO', 'APPLES', 'PEACHES', 'NURSERIES', 'VINEYARDS', 'MARKET GARDENS', 'BEES', 'FOREST PRODUCTS'.

Page No. 2

Supervisor's Dist: No. 2

Enumeration Dist: No. 154

S.

NOTE A.—The light dotted perpendicular lines, which divide the spaces intended for numbers on this Schedule, are intended to separate the units, tens, &c., from each other, and the Enumerator should be careful that the figures are written within the small spaces so formed, thus: 74, the units 4, the tens 7, the units 1, the tens 3, the units 9.

NOTE B.—Make an affirmative entry by a slanting line (thus /) in one of the three columns 2, 3, and 4, according as the fact is in the case of each farm—in column 2, if the occupier is the owner of the farm; in column 3, if he is the tenant at a fixed money rental; in column 4, if he conducts it for a share of the product.

NOTE C.—Enumerators will observe that there are 104 questions relating to each farm, which are arranged in four successive divisions of each schedule page.

SCHEDULE 2.—Productions of Agriculture in Bowland Township in the County of Shannon, State of Missouri enumerated by me on the 24th day of June, 1880. Wm. Silas Rumburg Enumerator.

Table with multiple sections: THE PERSON WHO CONDUCTS THIS FARM, ACRES OF LAND, FARM VALUES, FENCES, LABOR, GRASS LANDS, NEAT CATTLE AND THEIR PRODUCTS, SUBSECT., SWINE, POULTRY ON HAND, CEREALS, FIBER, SUGAR, PULSES, POTATOES, TOBACCO, ORCHARDS, NURSERIES, VINEYARDS, MARKET GARDENS, BEES, FOREST PRODUCTS.

Received July 28, 1880.

C.

Page No. 3
Supervisor's Dist. No. 2
Enumeration Dist. No. 156

S.

NOTE A.—The light dotted perpendicular lines, which divide the spaces intended for numbers on this Schedule, are intended to separate the units, tens, &c., from each other, and the Enumerator should be careful that the figures are written within the small spaces so formed, thus: 421, the units in the right-hand small spaces.

NOTE B.—Make an affirmative entry by a slanting line (thus /) in one of the three columns 2, 3, and 4, according as the fact is in the case of each farm—in column 2, if the occupier is the owner of the farm; in column 3, if he is the tenant at a fixed money rental; in column 4, if he conducts it for a share of the product.

NOTE C.—Enumerators will observe that there are 104 questions relating to each farm, which are arranged in four successive divisions of each schedule page.

SCHEDULE 2.—Productions of Agriculture in *Bowland Township* in the County of *Shannon*, State of *Missouri*.

enumerated by me on the *9th* day of June, 1880. *Wm. S. Rumburg*
Enumerator.

Table with multiple sections: OF THE PERSON WHO CONDUCTS THIS FARM, ACRES OF LAND, FARM VALUES, FENCES, LABOR, GRASS LANDS, NEAT CATTLE AND THEIR PRODUCTS, SHEEP, SWINE, POULTRY ON HAND, CEREALS, FIBER, SUGAR, PULSES, POTATOES, TOBACCO, ORCHARDS, NURSERIES, VINEYARDS, MARKET GARDENS, BEES, FOREST PRODUCTS. Includes handwritten entries for various farms and their produce.

Page No. 4
Supervisor's Dist. No. 2
Enumeration Dist. No. 156

NOTE A.-The light dotted perpendicular lines, which divide the spaces intended for numbers on this Schedule, are intended to separate the units, tens, &c., from each other, and the Enumerator should be careful that the figures are written within the small spaces so formed, thus: 7 4, the units in the right-hand small spaces.
NOTE B.-Make an affirmative entry by a slanting line (thus /) in one of the three columns 2, 3, and 4, according as the fact is in the case of each farm—in column 2, if the occupier is the owner of the farm; in column 3, if he is the tenant at a fixed money rental; in column 4, if he conducts it for a share of the product.
NOTE C.—Enumerators will observe that there are 104 questions relating to each farm, which are arranged in four successive divisions of each schedule page.

SCHEDULE 2.—Productions of Agriculture in Bowland Township in the County of Chariton, State of Missouri, enumerated by me on the 10th day of June, 1880.

Enumerator.

Table with columns: OF THE PERSON WHO CONDUCTS THIS FARM, ACRES OF LAND, FARM VALUES, FENCES, LABOR, GRASS LANDS. Includes farm names like 'Bentley Jacob' and 'Willis Marion H.' with associated acreage and values.

Table with columns: NEAT CATTLE AND THEIR PRODUCTS, SHEEP, SWINE, POULTRY ON HAND. Includes sub-sections for 'ON HAND JUNE 1, 1880' and 'MOVEMENT, 1879'.

Table with columns: CEREALS, FIBER, SUGAR. Includes sub-sections for 'CEREALS' (Barley, Buckwheat, Indian Corn, Oats, Rye, Wheat) and 'SUGAR' (Cane, Sorghum, Maple).

Table with columns: PULSE, POTATOES, TOBACCO, ORCHARDS, NURSERIES, VINEYARDS, MARKET GARDENS, BEES, FOREST PRODUCTS. Includes sub-sections for 'PULSE', 'POTATOES', 'TOBACCO', 'ORCHARDS', 'NURSERIES', 'VINEYARDS', 'MARKET GARDENS', 'BEES', and 'FOREST PRODUCTS'.

Page No. 5
Supervisor's Dist. No. 2
Enumeration Dist. No. 156

NOTE A.—The light dotted perpendicular lines, which divide the spaces intended for numbers on this Schedule, are intended to separate the units, tens, &c., from each other, and the Enumerator should be careful that the figures are written within the small spaces so formed, thus: 74, the units 4 2 1, the tens 7 3 9.

NOTE B.—Make an affirmative entry by a slanting line (thus /) in one of the three columns 2, 3, and 4, according as the fact is in the case of each farm—in column 2, if the occupier is the owner of the farm; in column 3, if he is the tenant at a fixed money rental; in column 4, if he conducts it for a share of the product.

NOTE C.—Enumerators will observe that there are 104 questions relating to each farm, which are arranged in four successive divisions of each schedule page.

SCHEDULE 2.—Productions of Agriculture in Moore Township in the County of Shannon, State of Missouri enumerated by me on the _____ day of June, 1880. Wm. Silas Rumburg, Enumerator.

Table with multiple sections: THE PERSON WHO CONDUCTS THIS FARM, ACRES OF LAND, FARM VALUES, PENCES, LABOR, GRASS LANDS, NEAT CATTLE AND THEIR PRODUCTS, CEREALS, FIBER, SUGAR, ORCHARDS, NURSERTIES, VINEYARDS, MARKET GARDENS, BERRIES, FOREST PRODUCTS. Includes handwritten entries for various farms and their produce.

Page No. 0

Supervisor's Dist. No. 2

Enumeration Dist. No. 156

S.

NOTE A.—The light dotted perpendicular lines, which divide the spaces intended for numbers on this Schedule, are intended to separate the units, tens, &c., from each other, and the Enumerator should be careful that the figures are written within the small spaces so formed, thus: 7 4 1, the units in the right-hand small spaces.

NOTE B.—Make an affirmative entry by a slanting line (thus /) in one of the three columns 2, 3, and 4, according as the fact is in the case of each farm—in column 2, if the occupier is the owner of the farm; in column 3, if he is the tenant at a fixed money rental; in column 4, if he conducts it for a share of the product.

NOTE C.—Enumerators will observe that there are 104 questions relating to each farm, which are arranged in four successive divisions of each schedule page.

SCHEDULE 2.—Productions of Agriculture in Moore Township in the County of Shannon, State of Missouri

enumerated by me on the 15 day of June, 1880. Wm. Silas Rumburg, Enumerator.

Table with columns: OF THE PERSON WHO CONDUCTS THIS FARM, ACRES OF LAND, FARM VALUES, FENCES, LABOR, GRASS LANDS. Includes farm names like Conway John, Herring Richard, etc.

Table with columns: BEAT CATTLE AND THEIR PRODUCTS, SHEEP, SWINE, POULTRY ON LAND. Includes sub-sections for Cattle of all ages, Sheep and lambs, etc.

Table with columns: CEREALS, FIBRE, SUGAR. Includes sub-sections for BARLEY, RYE, WHEAT, COTTON, etc.

Table with columns: POTATOS, TOBACCO, ORCHARDS, SUBSIDIARIES, VINEYARDS, MARKET GARDENS, BEES, FOREST PRODUCTS. Includes sub-sections for POTATOS (Irish), TOBACCO, APPLE, PEACH, etc.

Page No. 8
Supervisor's Dist. No. 2
Enumeration Dist. No. 146

NOTE A.-The light dotted perpendicular lines, which divide the spaces intended for numbers on this Schedule, are intended to separate the units, tens, &c., from each other, and the Enumerator should be careful that the figures are written within the small spaces so formed, thus: 74, the units in the right-hand small spaces.

NOTE B.-Make an affirmative entry by a slanting line (thus /) in one of the three columns 2, 3, and 4, according as the fact is in the case of each farm—in column 2, if the occupier is the owner of the farm; in column 3, if he is the tenant at a fixed money rental; in column 4, if he conducts it for a share of the product.

NOTE C.-Enumerators will observe that there are 104 questions relating to each farm, which are arranged in four successive divisions of each schedule page.

SCHEDULE 2.—Productions of Agriculture in More Township in the County of Shannon, State of Missouri
enumerated by me on the 16th day of June, 1880. Wm Silas Rumburg, Enumerator.

Table with multiple sections: OF THE PERSON WHO CONDUCTS THIS FARM, ACRES OF LAND, FARM VALUES, FENCES, LABOR, GRASS LANDS, NEAT CATTLE AND THEIR PRODUCTS, SHEEP, SWINE, CEREALS, FRUIT, SUGAR, PULSE, POTATOES, TOBACCO, ORCHARDS, NURSERIES, VINEYARDS, MARKET GARDENS, DEER, FOREST PRODUCTS.

Page No. 9
Supervisor's Dist. No. 2
Enumeration Dist. No. 156

S.

NOTE A.—The light dotted perpendicular lines, which divide the spaces intended for numbers on this Schedule, are intended to separate the units, tens, &c., from each other, and the Enumerator should be careful that the figures are written within the small spaces so formed, thus: 7 1 1, the units in the right-hand small spaces.

NOTE B.—Make an affirmative entry by a slanting line (thus /) in one of the three columns 2, 3, and 4, according as the fact is in the case of each farm—in column 2, if the occupier is the owner of the farm; in column 3, if he is the tenant at a fixed money rental; in column 4, if he conducts it for a share of the product.

NOTE C.—Enumerators will observe that there are 104 questions relating to each farm, which are arranged in four successive divisions of each schedule page.

SCHEDULE 2.—Productions of Agriculture in *Newton Township* in the County of *Shannon*, State of *Missouri*
enumerated by me on the *17th* day of June, 1880. *Wm. Silas Rumburg*
Enumerator.

Table with multiple sections: NEAT CATTLE AND THEIR PRODUCTS, SHEEP, SWINE, CEREALS, FIBER, SUGAR, PULSES, POTATOES, TORACCO, ORCHARDS, NURSERIES, VINEYARDS, MARKET GARDENS, BEES, FOREST PRODUCTS. Includes columns for acreage, value, and quantity.

Page No. 10

Supervisor's Dist. No. 2

Enumeration Dist. No. 156

S.

NOTE A.—The light dotted perpendicular lines, which divide the spaces intended for numbers on this Schedule, are intended to separate the units, tens, &c., from each other, and the Enumerator should be careful that the figures are written within the small spaces so formed, thus: 7 4 1, the units in the right-hand small spaces.

NOTE B.—Make an affirmative entry by a slanting line (thus /) in one of the three columns 2, 3, and 4, according as the fact is in the case of each farm—in column 2, if the occupier is the owner of the farm; in column 3, if he is the tenant at a fixed money rental; in column 4, if he conducts it for a share of the product.

NOTE C.—Enumerators will observe that there are 104 questions relating to each farm, which are arranged in four successive divisions of each schedule page.

SCHEDULE 2.—Productions of Agriculture in Newton Township in the County of Shannon, State of Missouri

enumerated by me on the 17th day of June, 1880.

Wm. Silas Rumburg

Enumerator.

Table with columns: OF THE PERSON WHO CONDUCTS THIS FARM, ACRES OF LAND, FARM VALUES, PERCENTS, LABOR, GRASS LANDS. Includes farm names like Shuck Rhode, Lanham Berry etc.

Table with columns: NEAT CATTLE AND THEIR PRODUCTS, SWINE, POULTRY ON HAND. Includes sub-sections for Cattle, Sheep and lambs, etc.

Table with columns: CEREALS, FIBER, SUGAR. Includes sub-sections for BARLEY, RICE, COTTON, etc.

Table with columns: PULSE, POTATOES, TOBACCO, ORCHARDS, NURSERTIES, VINEYARDS, MARKET GARDENS, BEES, FOREST PRODUCTS. Includes sub-sections for Apples, Peaches, etc.

Page No. 11
Supervisor's Dist: No. 2
Enumeration Dist: No. 159

S.

NOTE A.—The light dotted perpendicular lines, which divide the spaces intended for numbers on this Schedule, are intended to separate the units, tens, &c., from each other, and the Enumerator should be careful that the figures are written within the small spaces so formed, thus:

7	4
4	2
1	3

 the units in the right-hand small spaces.

NOTE B.—Make an affirmative entry by a slanting line (thus /) in one of the three columns 2, 3, and 4, according as the fact is in the case of each farm—in column 2, if the occupier is the owner of the farm; in column 3, if he is the tenant at a fixed money rental; in column 4, if he conducts it for a share of the product.

NOTE C.—Enumerators will observe that there are 104 questions relating to each farm, which are arranged in four successive divisions of each schedule page.

SCHEDULE 2.—Productions of Agriculture in Newton Township in the County of Shannon, State of Missouri enumerated by me on the 18th day of June, 1880. Wm. Silas Rumburg Enumerator.

Table with multiple sections: 'OF THE PERSON WHO CONDUCTS THIS FARM', 'ACRES OF LAND', 'FARM VALUES', 'FENCES', 'LABOR', 'GRASS LANDS', 'NEAT CATTLE AND THEIR PRODUCTS', 'SHEEP', 'ORCHARD', 'FIBER', 'SUGAR', 'PULSE', 'POTATOES', 'TOBACCO', 'ORCHARDS-1879', 'NURSERIES', 'VINYARDS', 'MARKET GARDENS', 'BEES-1879', 'FOREST PRODUCTS'. Includes farm names like Crowder, Gracy, Thompson, Shumels, Boyd, Samuel, Land, John, H., Short, Moses, Short, William, Moorey, Daniel, Busby, John, Hunter, Thomas, Lewis, James.

Page No. 12
Supervisor's Dist: No. 2
Enumeration Dist: No. 154
S.

NOTE A.—The light dotted perpendicular lines, which divide the spaces intended for numbers on this Schedule, are intended to separate the units, tens, &c., from each other, and the Enumerator should be careful that the figures are written within the small spaces so formed, thus: 74, the units in the right-hand small spaces.

NOTE B.—Make an affirmative entry by a slanting line (thus /) in one of the three columns 2, 3, and 4, according as the fact is in the case of each farm—in column 2, if the occupier is the owner of the farm; in column 3, if he is the tenant at a fixed money rental; in column 4, if he conducts it for a share of the product.

NOTE C.—Enumerators will observe that there are 104 questions relating to each farm, which are arranged in four successive divisions of each schedule page.

SCHEDULE 2.—Productions of Agriculture in Newton Township in the County of Shannon, State of Missouri, enumerated by me on the 19th day of June, 1880. Wm. Silas Rumburg, Enumerator.

Main data table with columns for Farm Name, Acres of Land (Improved/Unimproved), Farm Values, Fences, Labor, Grass Lands, Neat Cattle and Their Products, Sheep, Swine, Poultry, Cereals, Fiber, Sugar, Pulse, Potatoes, Tobacco, Orchards, Nurseries, Vineyards, Market Gardens, Bees, and Forest Products.

I certify that I have this day completed the Enumeration of the district assigned me and that the returns have been duly and truthfully made in accordance with law and my oath of office. This June 19th 1880 Wm. Silas Rumburg