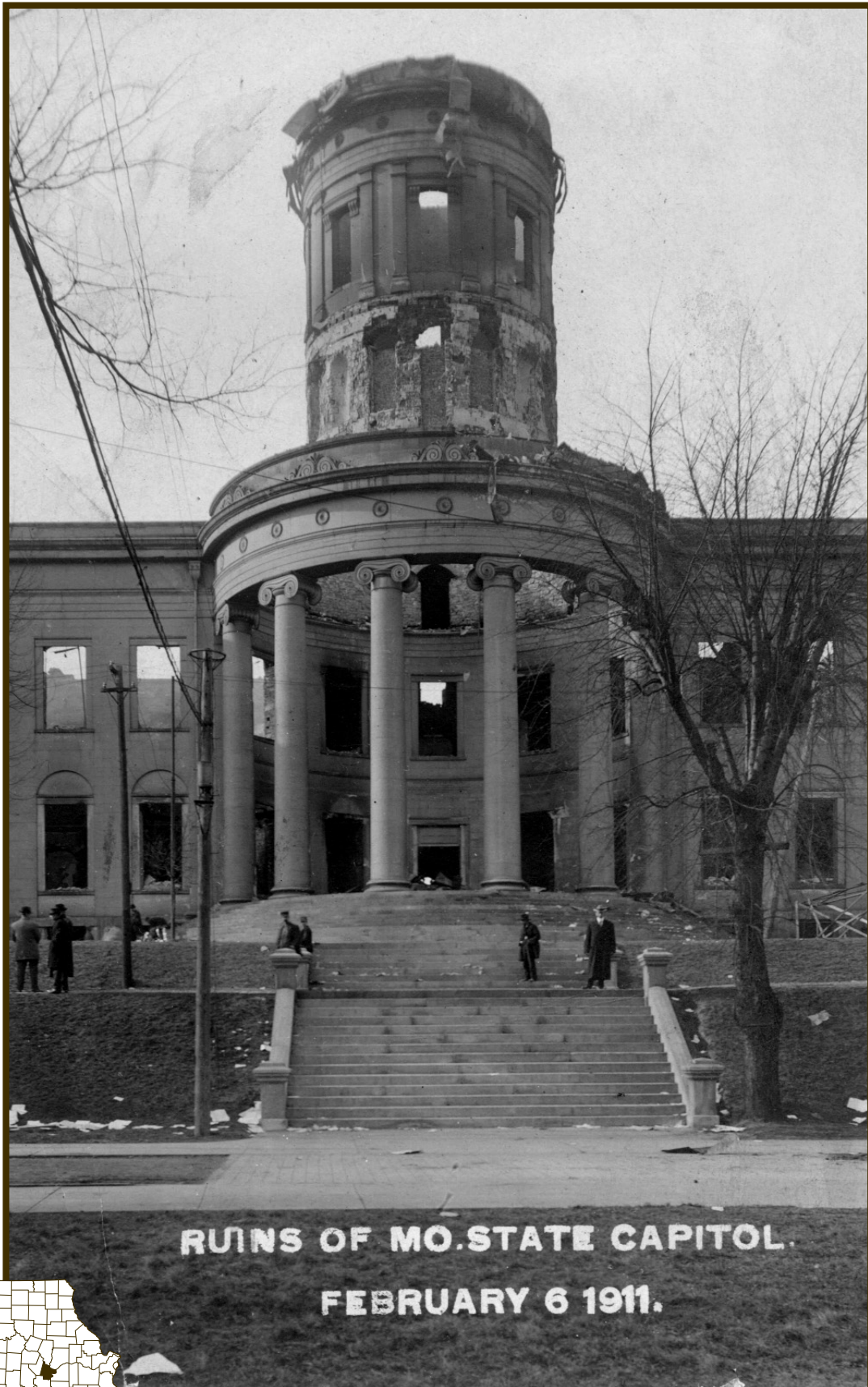
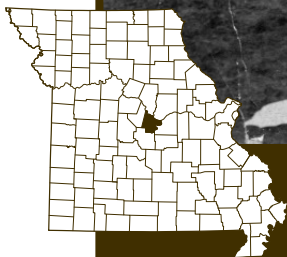


The State Capitol Burns



RUINS OF MO. STATE CAPITOL.

FEBRUARY 6 1911.



Ruins of the Missouri State Capitol, 1911.
Missouri State Archives

Ruins of the Missouri State Capitol, 1911.

The second state capitol building in Jefferson City was completed in 1840. It was destroyed by fire on February 5, 1911, when a bolt of lightning struck the dome. Local people, state officials, and prisoners from the nearby state penitentiary went into the burning building to retrieve state documents. While these efforts saved thousands of important documents, many were destroyed by flames or were ruined by water used to fight the blaze.

ANALYZING PHOTOGRAPHS & PRINTS

OBSERVE

Study the picture closely. Describe what you see. _____

What details can you identify? Use the chart below to list people, objects, and activities.

People	Objects	Activities

REFLECT

What clues are there as to the date of this photo/print? _____

Who or what do you think is the subject of this photo/print? _____

Why do you think this photo/print was created? _____

Where might you expect to find this photo/print? _____

Based on what you have observed list 3 things you might learn from the image.

1. _____

2. _____

3. _____

QUESTION

What questions does this photo/print raise? _____

Where could you find answers to them? _____
