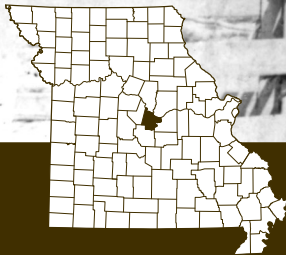
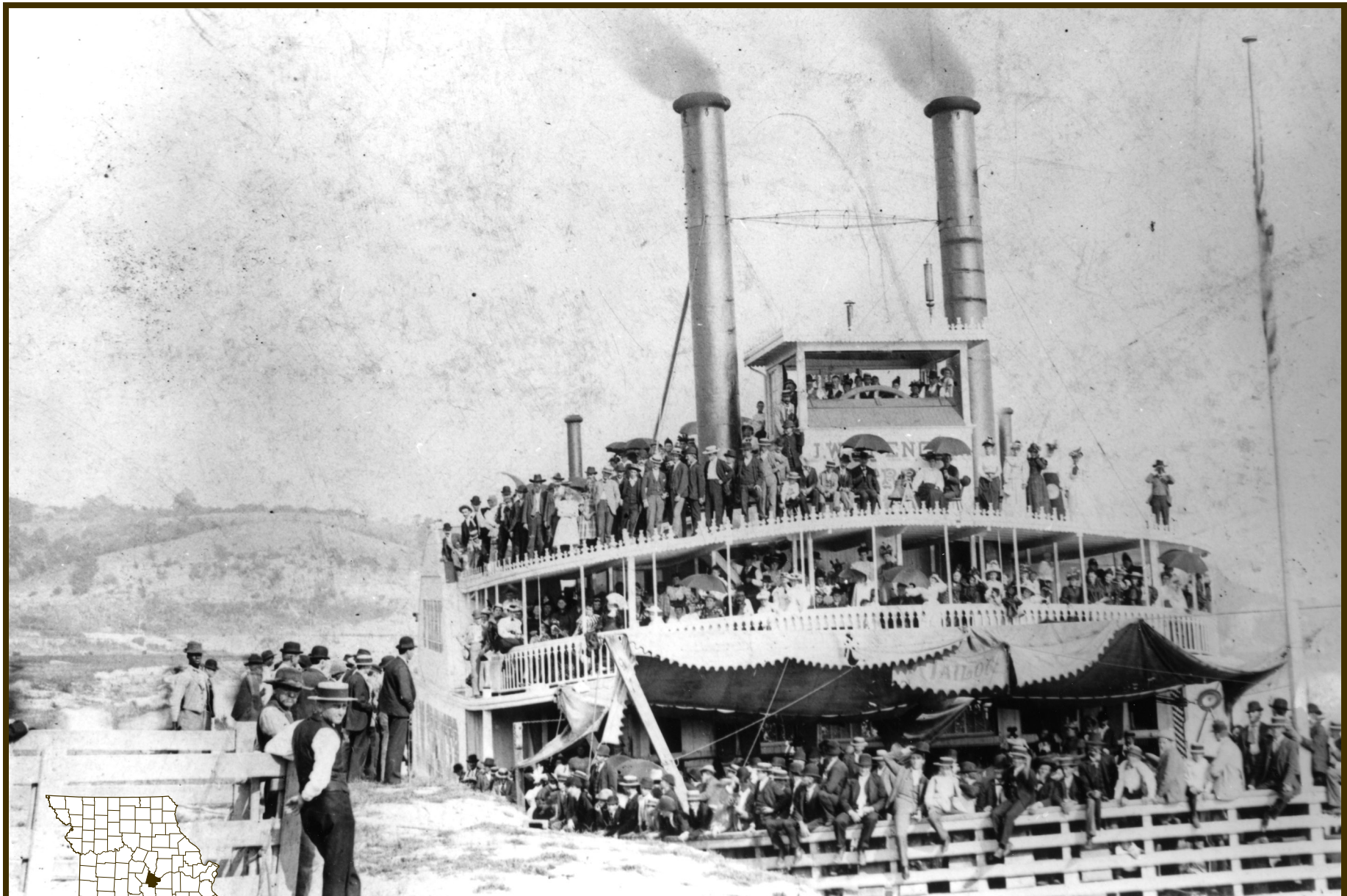


Traveling by Steamboat



Steamboat J. W. Spencer in Jefferson City, 1898.
Missouri State Archives

Steamboat *J. W. Spencer* in Jefferson City, 1898.

This is a photo of the *J. W. Spencer* steamboat operating as a ferry in the Jefferson City area on the Missouri River. The steamboat *J. W. Spencer* was a sidewheel steamboat built in 1882. It was 131 feet long and 35 feet wide. The *J. W. Spencer* was one of the last steamboats providing both passenger and cargo service in the mid-Missouri area. It served as a ferry for about 10 years before the construction of the first bridge crossing the Missouri River at Jefferson City. After the bridge opened, the *J. W. Spencer* went to St. Charles, Missouri.

ANALYZING PHOTOGRAPHS & PRINTS

OBSERVE

Study the picture closely. Describe what you see. _____

What details can you identify? Use the chart below to list people, objects, and activities.

People	Objects	Activities

REFLECT

What clues are there as to the date of this photo/print? _____

Who or what do you think is the subject of this photo/print? _____

Why do you think this photo/print was created? _____

Where might you expect to find this photo/print? _____

Based on what you have observed list 3 things you might learn from the image.

- 1. _____
- 2. _____
- 3. _____

QUESTION

What questions does this photo/print raise? _____

Where could you find answers to them? _____
