

SHOW ME EXPRESS

State Library Newsletter

August 2025



Denny Hoskins, CPA
Missouri Secretary of State



State Library News

Summer Library Program Surveys are Here!

It's time to complete your summer library program surveys. Below are links to TWO summer library program surveys, which the staff person(s) responsible for your summer library program should complete. If you are in a multi-branch library district, please coordinate who will

complete these surveys on behalf of the entire library district. Even if your library did not offer summer library programming, we ask that you complete the first survey because it provides important information to the State Library.

1. Summer Library Program Survey from the Missouri State Library

All state aid eligible public libraries in Missouri are required to complete this survey in order to be eligible for Collaborative Summer Library Program (CSLP) reimbursement funds in the fall. Even if your library did not offer summer programming this year or does not plan to use CSLP funds in the fall, **complete the survey by Friday, Aug. 29.**



Missouri Secretary of State
State Library

<https://survey.alchemer.com/s3/8364423/2025-Summer-Library-Program-Survey>

2. Collaborative Summer Library Program Survey from CSLP

All state-aid eligible public libraries in Missouri who offered summer programming are encouraged to complete this survey because it provides important information to the CSLP program directors on the usefulness of the materials offered by CSLP. **Complete this survey by Friday, Sept. 12.**



collaborative
summer library program

<https://forms.gle/gohxTu3YyMcAgB7v6>

If you have any questions about these surveys or would like a blank PDF copy of the surveys, contact Katie Dunne, the Missouri State Library

Youth Services Coordinator, at (573) 522-9564 or katie.dunne@sos.mo.gov.

Save the Date to Unearth a Story with Summer Library Program Workshops

As this year's summer library programming wraps up, you might already be brainstorming ideas for next summer and the 2026 Collaborative Summer Library Program (CSLP) theme Unearth a Story. The Missouri State Library is here to help you prep this fall by offering eight workshops around the state!

Our workshops will feature activities from the upcoming CLSP manual, present options outside the manual, include a few hands-on activities, and facilitate brainstorming with other library staff in your area. Although we haven't started registrations yet, we have all of our dates and locations, so see our workshop list below and save the date:

- **Barry Lawrence Regional Library** in Monett – Oct. 21
- **Springfield-Greene County Library** at the Library Station in Springfield – Oct. 22
- **Sikeston Public Library** in Sikeston – Oct. 28

- **Livingston County Library** in Chillicothe – Nov. 3
- **Scenic Regional Library** in Union – Nov. 13
- **Hannibal Free Public Library** in Hannibal – Nov. 14
- **Cass County Public Library at the Northern Resource Center** in Belton – Nov. 17
- **Daniel Boone Regional Library** in Columbia – Nov. 20

Watch the Missouri State Library listservs to find out when registration opens. Due to space considerations, library districts will initially be limited to three registrants per district. Additional registrants will be added to a waiting list.

For more information, contact Katie Dunne at katie.dunne@sos.mo.gov or (573) 522-9564 or Merideth Johnson at (573) 751-1822 or merideth.johnson@sos.mo.gov.



This project is supported by the Institute of Museum and Library Services under the provisions of the Library Services and Technology Act as administered by the Missouri State Library, a division of the Office of the Secretary of State.

TeachingBooks Webinars Return!

Kick off your fall with TeachingBooks, a literacy tool that provides engaging resources to help children and teens connect to books and authors they love. Students, patrons, parents, teachers, and librarians can use TeachingBooks to find author interviews, book trailers, discussion guides, early literacy support tools, and more. The best part? It is free to you! See below for information on our fall webinars.

[Back to School with TeachingBooks](#)

Thursday, Aug. 14 from 3:30 – 4 p.m.

[Missouri Collection Analysis Initiative Webinar Series](#) (join one or all!)

- **Starting Off the School Year with Collection Analysis**
Tuesday, Aug. 19 2:30 – 3:30 p.m.

- **Using Collection Analysis at the Public Library**
Tuesday, Sept. 16 2:30 – 3:30 p.m.
- **Celebrating Holidays and Heritage Months with Collection Analysis**
Tuesday, Oct. 14 2:30 – 3:30 p.m.
- **Analyzing Picture Books to Support Early Literacy**
Tuesday, Nov. 18 2:30 – 3:30 p.m.



This project is supported by the Institute of Museum and Library Services under the provisions of the Library Services and Technology Act as administered by the Missouri State Library, a division of the Office of the Secretary of State.

Help Your Patrons Become Citizen Scientists

While many think of scientists in their white coats conducting various experiments in a lab, pouring chemicals from one beaker to the next, heating metal alloys over Bunsen burners, and analyzing bacteria under a microscope, many science projects need data, observations, and samples from wide swathes of area. However, professional scientists may not have the capacity to complete their experiments without help from citizen scientists.

Citizen science allows everyday people with or without a science background to join in to help various scientific projects progress with a much larger data set and observation scope than professional scientists can gather on their own. In fact, many scientific studies and projects can only function with the help of volunteers and amateur scientists!

You and your patrons can become citizen scientists and join in the scientific process! We've gathered some Missouri, Midwest, and US projects that need your community's help collecting data, monitoring populations, and sharing observations.

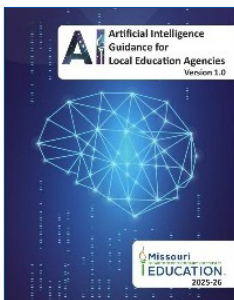
1. Join the [Missouri Bumble Bee Atlas](#) to track and conserve Missouri's native bumble bees.
2. Get involved with the [Missouri Department of Conservation's \(MDC\) projects](#), or take advice from the [MDC](#) and capture photos of any interesting plants or animals you find on your hikes and upload them to your social media with the tag #mdcdiscovernature or one of the suggested sighting apps.

3. Join or start a local [Missouri Stream Team](#) to help conserve Missouri's streams by removing trash, measuring water chemistry, gathering macroinvertebrate data, and more.
4. Join the Missouri Department of Natural Resources' and Missouri Stream Team's [Volunteer Water Quality Monitoring Program](#) to generate water quality data and monitor stream and river health.
5. Help restore the ecosystem of the Missouri River by volunteering with the [Missouri River Relief](#) cleanups.
6. Gather data, tag, or observe Monarch butterflies and larva in Missouri with [this list from the U.S. Forest Service](#).
7. Find various projects across the United States that need citizen scientists at [CitizenScience.gov](#), [National Aeronautics and Space Administration \(NASA\)](#), [National Oceanic and Atmospheric Administration \(NOAA\)](#), [National Park Service](#), [National Forest Service](#), [SciStarter](#), and National Geographic's [Citizen Science Projects](#) and [Finding Urban Nature](#).

Is your library currently involved in or have experience with citizen science projects? If so, we'd love to feature you in an upcoming newsletter! Contact us at mostlib@sos.mo.gov.



Featured Government Document from the State Library



[AI Guidance for Local Education Agencies](#) by the Missouri Department of Elementary & Secondary Education provides general best practices for the use of artificial intelligence (AI) in education by local schools and communities. Discover more government publications in our [Missouri State Publications Collection](#) to share with patrons. For assistance with government information or publications, please contact the Reference Services team at the [State Library](#).



Reference Services for YOU: SEMA Disaster Preparation and Recovery Tools

To prepare for extreme weather conditions, patrons can familiarize themselves with useful tools available from Missouri's State Emergency Management Agency (SEMA).

The Missouri State Emergency Management Agency State Watch Center publishes a detailed [Daily Brief](#) monitoring weather conditions around the state. Another helpful preparation tool is an interactive map of [Local Emergency Management Contacts](#). Knowing their local emergency contacts can help patrons create a disaster recovery plan ahead of time.

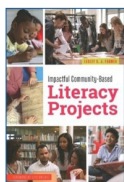
The [Missouri SEMA Flood Visualization Tool](#) helps estimate potential repair costs for flood-damaged homes. Patrons can input their home's square footage, building type, and if it has a basement. With this tool, patrons can adjust the depth of potential floodwater using a sliding

scale that generates approximate repair costs based on projected height of floodwater in a home.

Federal assistance programs help support state and local governments, school districts, and nonprofit organizations assist their communities with recovery from major disasters or emergencies. SEMA's [Public Assistance Program](#) manages federal grants and provides applicant briefing videos along with necessary documents for current disasters. SEMA also provides a list of [Major Disaster Declarations](#) in Missouri, which includes information on both current and past disaster and emergency declarations within the state.

Questions? Contact Reference Services at (573) 751-3615, libref@sos.mo.gov, or mostate.libguides.com.

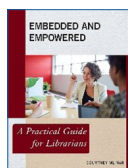
Featured Books from the State Library



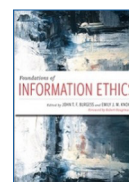
[Impactful
Community-Based
Literacy Projects](#)



[Renew Yourself](#)



[Embedded and
Empowered](#)



[Foundations of
Information Ethics](#)

Discover more of our new Library Professional Development titles as well as recorded webinars, government publications, and more on the [Missouri Library Staff Guide](#).

Directors and branch managers can sign up for a State Library card from the guide and are encouraged to borrow items for themselves or any of their library's staff. State Library books are also available for borrowing through both MOBIUS and WorldShare.

For assistance placing holds, requesting or replacing a card, or for additional information, please contact Reference Services by phone, [email](#), or [chat](#). We are available Monday through Friday, 8 a.m. to 5 p.m., and are always happy to help!



This project is supported by the Institute of Museum and Library Services under the provisions of the Library Services and Technology Act as administered by the Missouri State Library, a division of the Office of the Secretary of State.



Around the State

Missouri River Regional Library's Bookmobile Summer at the Park

Missouri River Regional Library (MMRL) and Jefferson City Parks have a long tradition of working together to serve their community. MRRL Library Director Claudia Young approached Community Relations Manager Ashley Wiskirchen last summer with the idea of the bookmobile having a longer stops in two of the parks: Ellis-Porter Riverside and Memorial Parks.

Ashley loved the idea, but Claudia had communicated that the Bookmobile needed a 150-to-200-amp outlet to charge the generator overnight to run the AC the next day. Ashley checked with the maintenance manager and discovered this was already possible at both parks.

Ashley later sent a map with the places the bookmobile to park and the MRRL team started discussing marketing plans. Many of the youth day camps take place at each of these parks, so



they would be able to reach a large group of kids and help with the dreaded summer slump. The idea was for camp counselors to take kids to the bookmobile for reading time each day to enjoy some of the perks of the library outside of the building.

They first started at Ellis-Porter Riverside Park in June and moved to Memorial Park in July. The bookmobile was available from 12 to 4 p.m. each day. In June, they had 533 people use the bookmobile in the park and were on target to match or exceed that number in July.

Grant Opportunities – State Library Grants

Educational Presenter Grant • **Deadline: Ongoing**

This open-call grant from the Missouri State Library provides funds for libraries to bring an author or educational presentation to their community. This application is open to Missouri

public libraries certified to receive FY26 state aid, Missouri school libraries publicly supported and publicly controlled, and Missouri academic libraries supported publicly or privately.

Show-Me Steps To Continuing Education • **Deadline: Ongoing**

This open-call grant from the Missouri State Library provides financial assistance for library staff and trustees to participate in continuing education and training opportunities when local funds cannot finance the entire cost. Continuing education events can be for individuals or groups but must be pertinent to the operational

or service needs of the applicant's library. This application is open to Missouri public libraries certified to receive FY26 state aid, Missouri school libraries publicly supported and publicly controlled, and Missouri academic or special libraries supported publicly or privately.

Technology Mini Grant • Deadline: Oct. 1

The 2025-26 Technology Mini Grant will open mid-Aug. with applications due by Oct. 1. The maximum available per library system grant request is \$20,000. Please review the grant eligibility requirements and eligible costs in the award guidance and remember to print the award guidance for your grant file. Eligible

costs are more limited than in prior years' grant offerings. A grant overview session will be presented via webinar on Aug. 20 at 10 am. The link will be sent out on the Publibdir email list at a later date. This application is open to Missouri public libraries certified to receive FY26 state aid.

Please contact either Merideth Johnson at merideth.johnson@sos.mo.gov or Terry Blauvelt at terry.blauvelt@sos.mo.gov with questions.

All available grants are found in the [online grant management system](#) approximately 45 days prior to the application due date.



This project is supported by the Institute of Museum and Library Services under the provisions of the Library Services and Technology Act as administered by the Missouri State Library, a division of the Office of the Secretary of State.

Grant Opportunities – National Grants

Rediscovering Our Revolutionary Tradition • Deadline: Sept. 4

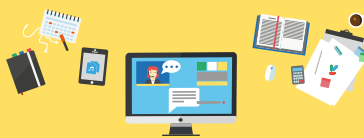
To honor the 250th anniversary of the Declaration of Independence, this grant from the National Endowment for the Humanities (NEH) supports activities to preserve and improve access to primary source materials documenting the history of American independence, the establishment and/or expansion of the nation, and the history of local, state, and/or federal

government in the United States. Supported activities include conservation treatment and rehousing, digitization and description, transcription and translation, and updating existing digital resources. Awarded projects can receive up to \$350,000 for individual institutions and \$750,000 for consortia.

USDA Community Facilities Programs

This USDA program offers funding through loans, loan guarantees, and grants to public bodies, non-profit organizations, and federally recognized Native American tribes to construct, expand, or improve rural communities' facilities

that provide health care, education, public safety, and public services, including libraries. Contact the [USDA Missouri Rural Development Office](#) at rd.mo.general.inquiries@usda.gov or (573) 876-0976 for more information.



Professional Development Offerings

Missouri Collection Analysis Initiative

Trainings include:

- Starting Off the School Year with Collection Analysis, Aug. 19, 2:30 – 3:40 p.m.
- Using Collection Analysis at the Public Library, Sept. 16, 2:30 – 3:30 p.m.

For the complete training list, visit [Missouri Collection Analysis Initiative Webinars](#).

Amigos Library Services

All Amigos continuing education sessions are now free to Amigos members. Trainings include:

- Website Accessibility for Everyone, Aug. 14, 10 a.m. – 12 p.m.
 - Know & Go: Welcoming Adult Learners to Your Library with Bilingual Programming, Aug. 18, 1:30 – 2:30 p.m.
 - Introduction to Programming with Python and PyMARC, Aug. 21, 1 – 3 p.m.
 - Know & Go: Making Meetings More Effective, Aug. 25, 1:30 – 2:30 p.m.
 - The Essentials: Customer Service, Aug. 27, 1 – 3 p.m.
 - Discover Hyku: Empowering Libraries with Open-Source Repository Solutions, Sept. 8, 1:30 – 2:30 p.m.
 - Know & Go: Tips for Cover Letters, Resumes, and Interviews, Sept 15
- For the complete training list, visit the [Amigos Continuing Education Services Schedule](#).

The Association for Small and Rural Libraries (ARSL)

Trainings include:

- America's Voice Project – Free Roper iPoll Access, August 12, 1 p.m.
- [2025 ARSL Conference: Libraries Rise!](#), Sept 17 –20, Albuquerque Convention Center, New Mexico

For the complete training list, visit the [ARSL TRAIN Workshops & Roundtables](#).



Homeless Training Institute by Ryan Dowd

Trainings include:

- [Teenagers \(Part 2\)](#): Teens with Trauma/ ACEs, Aug. 14, 1 – 2 p.m.

For the complete training list, visit [Homeless Training's Next Live Training](#).

MALA (Mid-American Library Alliance)

Trainings include:

- A Successful Library of Things Redesign, Aug. 20, 2 – 3 p.m.

For the complete training list, visit [MALAPro Professional Development](#).

Missouri Library Association (MLA)

Trainings include:

- 2025 MLA Conference: The Joy of Libraries, Oct. 8 – 9, Doubletree by Hilton Hotel – St. Louis
- 2025 MLA Performers Showcase, Oct. 8, 8 a.m. – 12 p.m., Doubletree Hilton Hotel – St. Louis

For the complete event list, visit [MLA Event Calendar](#).

MOREnet

Trainings include:

- Ask the Expert: Student Data Privacy & Negotiating Redlines, Sept. 9, 1 – 2 p.m.
- 2025 MOREnet Annual Conference, Oct. 20 – 23, 7 a.m. – 4 p.m., Tan-Tar-A/ Margaritaville Lake Resort Osage Beach

For the complete training list, visit the [MOREnet Training Schedule](#).



Network of the National Library of Medicine (NNLM)

Trainings include:

- Telehealth 101: What Libraries Need to Know, Sept. 2 – 30, self-paced

For the complete training list, visit [NNLM Training](#).

Niche Academy

Trainings include:

- Social Media Roundup for Librarians, Aug. 13, 1 p.m.
- News Literacy Practices and Partnerships, Aug. 20, 1 p.m.
- Use Who You Have: Building a Library Training Program with Your Existing Staff, Sept. 3, 1 p.m.
- Agility in the Fog, Sept. 10, 1 p.m.

For the complete training list, visit [Niche Academy Upcoming Webinars](#).

Northeast Document Conservation Center (NEDCC)

Trainings include:

- Preventing and Responding to Mold in Book and Paper Collections, Aug. 12, 11:30 a.m. – 12:30 p.m.
- Celebrating with Collections!, Sept. 9, 11:30 a.m. – 12:30 p.m.
- Disaster and Emergency Planning Refresher, Aug. 19, 11:30 a.m. – 12:30 p.m.

For the complete training list, visit [NEDCC Current Training Programs](#).

WebJunction

Trainings include:

- Building Community Through Craft Programs, Aug. 12, 2 – 3 p.m.

For the complete training list, visit the [WebJunction Webinar Calendar](#). Create a free account to access webinar archives and training in the [WebJunction Course Catalog](#).

**Denny Hoskins, CPA**
Missouri Secretary of State



James C. Kirkpatrick
State Information Center
600 W. Main St.
Jefferson City, MO 65101
(573) 751-4936
info@sos.mo.gov

State Capitol
201 W. Capitol Ave., Rm. 121
Jefferson City, MO 65101
(573) 751-2379

Visit www.sos.mo.gov to learn more about the Office of the Missouri Secretary of State.

Contact Us

Library Development

mostlib@sos.mo.gov

(573) 522-4036

Reference Services

libref@sos.mo.gov

(573) 751-3615

Wolfner Library

wolfner@sos.mo.gov

(573) 751-8720