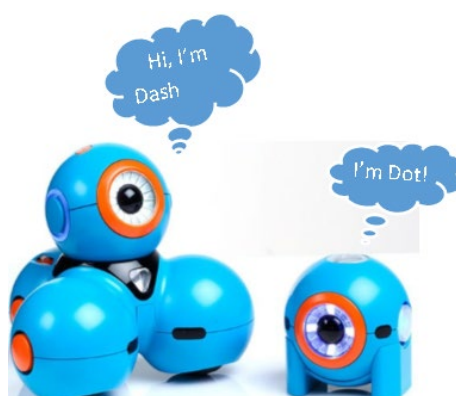


# Dash and Dot Quick Start Guide

## Kit Contents:

- 6 “Dash” Robots
- 6 “Dot” Robots
- 12 Kindle Tablets
- 12 Kindle Tablet charging cables
- 12 Kindle Tablet charging bricks
- 6 Challenge Card Sets
- 12 USB Charging Cords
- 1 Multi-port USB Charger
- 1 Curriculum Guide
- 6 Accessory Sets
  - 2 Bunny Ears
  - 1 Bunny Tail
  - 1 Launcher
  - 3 Balls
  - 1 Tow Hook
  - 1 Bulldozer Bar
  - 6 Target Stackers
  - 4 Brick Connectors
- 1 Quick Start Guide



**IMPORTANT: DO NOT** pick up Dash by its head. You can damage the swivel mechanism in its “neck.”

## Quick Set Up:

1. Power on all the tablets.
2. There are three MakeWonder apps pre-installed
  - a. **Path** — A Dash only line-following app, allowing users to sequence movements, sounds, etc. Because no reading is necessary, this app is recommended for younger kids.
  - b. **Blockly** — a Dash and Dot app to teach coding similar to Scratch where users can drag and drop blocks of code. Best for beginning programming for older kids.
  - c. **Wonder**—the newest Dash and Dot app that allows the user to explore, code and create. This app also controls the launcher (catapult). This app is best for beginner and intermediate programmers.

3. Once you are familiar with the apps, you are ready to begin exploring. Power on the robots, select the app and follow the instructions to connect the device to a robot.
  - a. **Each robot has a different name to make it easier to distinguish between robots when pairing with a device.**
    - i. Keep in mind that participants can (and probably will) change the names of the robots.
    - ii. Once you pair a robot, it should flash some lights.
      1. Users can change the color of the lights, to help ensure that they have paired up to the correct robot.
    - iii. When working with groups, it may help to spread out while pairing up robots, or to pair up only one robot at a time, taking special note of the name and selected light color of each robot when paired.
  - b. To pair a robot with a device, first open **Blockly**, **Wonder**; or **Path** on your device.
  - c. Turn on your robot, by pushing the white “ON” button.
    - i. **Dash moves around a lot once powered on, so the safest place to power on a Dash is while the robot is sitting safely on the floor, not while it is sitting on a table or desk.**
  - d. Connect to the robot by clicking the + sign in the upper right-hand corner.
4. **Blockly** and **Wonder** have in-app challenges to follow that teach the user how to code.
5. **Blockly** has 13 in-app puzzles for Dash, and 10 in-app puzzles for Dot.
  - a. These challenges will guide you through blocks such as drive, look, light, sound, animations, control, variables, and accessory.
  - b. You will be introduced to the basics of coding: sequences, loops, event, conditionals, functions, and variables.
  - c. These scaffolded challenges serve as tutorials to engage the user.
6. **Wonder** has 29 challenges for Dash, and 32 challenges for Dot.
  - a. Scroll Quest introduces the user to Wonder’s basic and advanced nodes: lights, sounds, animation, move, special, and accessory. Clues are unlocked as rewards.
  - b. Hints are provided as well.

### Kit Cleaning Basics

- Technology-safe wipes should be used to clean all screens, in order to avoid smearing.
- General disinfecting wipes (such as Lysol or Clorox wipes) can be used to wipe clean the plastic pieces in the kit, including the Dash and Dot robots and the silicon kindle cases.

### Helpful Links:

Getting Started with Dash and Dot Video: <https://tinyurl.com/s4fe2js>

Wonder App Tutorial Video: <https://tinyurl.com/ujatqza>

Launcher Tutorial Video: <https://tinyurl.com/veg6245>

Dash and Dot Show Tutorial (multiple videos): <https://tinyurl.com/hmv6cd2>

Dash and Dot Blog (Ideas for Inspiration): <https://www.makewonder.com/blog/>

Free Lessons and Activities and standards alignment: <https://tinyurl.com/y9ow3jtd>

### How to reset the Wonder Apps (in order to restart the training tutorials for new groups):

1. Open settings.
2. Select “Apps & Notifications.”
3. Then select “Manage All Applications.”
4. Scroll down until you find the App that you want to reset and tap on it.
5. In the App menu, select “Storage.”
6. There will be a larger yellow button with “CLEAR DATA”.
7. A pop up will appear; select OK to reset the app.
8. Repeat for **Blockly**, **Path**, and **Wonder**.

### Bluetooth troubleshooting:

1. If your app says Bluetooth is turned off, first try allowing it to reconnect to the Bluetooth by selecting YES or OKAY when it asks if you want to turn Bluetooth on. This will typically resolve the issue.

2. If for any reason that does not help, second, go to settings and try manually turning the Bluetooth off and then back on.
3. If that still does not work, then try completely closing the app by swiping up from the bottom of the screen and tapping on the square. Clearing the apps from this screen shuts them down.
4. If the Bluetooth is still not working, restart the tablet by holding down the power button.

---

*This project was supported in part by the Institute of Museum and Library Services, under the provision of the Library Services and Technology Act, as administered by the Missouri State Library, a division of the Office of the Secretary of State.*