

Missouri State Library: 2025 PLS Staff and Expenditures

Library	Pop. Served	Total FTE Paid Staff	Personnel Expenditures	Print Material & Serial Subscriptions	Electronic Materials	AV & Other Materials	Collection Expenditures	Other Expenditures	Total Expenditures
Adair County Public Library	25,314	6.8	\$363,642	\$44,057	\$40,073	\$9,271	\$93,401	\$108,548	\$565,591
Adrian Community Library	1,730	0.1	\$3,875	\$4,454	\$2,056	\$0	\$6,510	\$22,434	\$32,819
Advance Community Library	1,349	0.5	\$13,941	\$1,191	\$4,188	\$0	\$5,379	\$3,849	\$23,169
Albany Carnegie Public Library	1,670	2.2	\$101,349	\$8,429	\$2,572	\$2,398	\$13,399	\$29,397	\$144,145
Appleton City Library	1,032	0.8	\$18,530	\$1,488	\$237	\$0	\$1,725	\$12,816	\$33,071
Atchison County Library	5,305	5.3	\$277,464	\$24,755	\$2,506	\$2,215	\$29,476	\$118,455	\$425,395
Barry-Lawrence Regional Library	72,535	36.9	\$1,671,928	\$118,098	\$78,823	\$11,909	\$208,830	\$1,027,803	\$2,908,561
Barton County Library	11,637	4.7	\$198,667	\$17,040	\$8,236	\$2,456	\$27,732	\$168,997	\$395,396
Bernie Public Library	1,859	0.8	\$24,760	\$3,756	\$0	\$149	\$3,905	\$15,781	\$44,446
Bethany Public Library	2,915	1.5	\$44,035	\$5,909	\$2,035	\$2,927	\$10,871	\$16,081	\$70,987
Bloomfield Public Library	1,755	1.1	\$29,906	\$2,951	\$240	\$0	\$3,191	\$11,167	\$44,264
Bollinger County Library	10,567	2.7	\$127,325	\$6,566	\$140	\$174	\$6,880	\$74,099	\$208,304
Bonne Terre Memorial Library	6,903	2.3	\$86,753	\$11,579	\$123	\$2,275	\$13,977	\$51,159	\$151,889
Boonslick Regional Library	59,455	20.6	\$935,802	\$153,023	\$65,023	\$62,021	\$280,067	\$403,801	\$1,619,670
Bowling Green Public Library	4,195	1.8	\$62,437	\$12,258	\$2,789	\$1,000	\$16,047	\$41,180	\$119,664
Branson/Hollister Library Subdistrict	41,768	9.5	\$393,081	\$162,827	\$57,732	\$24,740	\$245,299	\$425,826	\$1,064,206
Brentwood Public Library	8,233	6.5	\$481,220	\$60,987	\$37,848	\$12,760	\$111,595	\$160,906	\$753,721
Brookfield Public Library	4,111	2.7	\$109,007	\$16,884	\$2,597	\$3,460	\$22,941	\$45,267	\$177,215
Caldwell County Library	6,867	1.8	\$72,423	\$6,386	\$2,776	\$0	\$9,162	\$33,034	\$114,619
Camden County Library	42,745	22.0	\$1,394,637	\$68,849	\$34,889	\$1,356	\$105,094	\$429,560	\$1,929,291
Cameron Public Library	8,513	3.8	\$155,483	\$16,026	\$3,557	\$0	\$19,583	\$61,701	\$236,767
Canton Public Library	2,724	1.4	\$57,755	\$5,467	\$2,607	\$40	\$8,114	\$21,937	\$87,806
Cape Girardeau Public Library	36,170	16.4	\$956,474	\$94,814	\$46,609	\$17,993	\$159,416	\$384,776	\$1,500,666
Carnegie (Shelbina) Public Library	1,613	1.5	\$56,969	\$8,206	\$2,166	\$0	\$10,372	\$9,009	\$76,350
Carrollton Public Library	3,514	4.4	\$147,058	\$18,390	\$1,972	\$16,984	\$37,346	\$58,397	\$242,801
Carter County Library	5,202	4.3	\$103,387	\$27,645	\$2,377	\$8,680	\$38,702	\$4,154	\$146,243
Carthage Public Library	15,522	17.1	\$691,305	\$46,465	\$13,673	\$9,205	\$69,343	\$333,660	\$1,094,308
Caruthersville Public Library	5,562	4.4	\$116,696	\$17,006	\$11,346	\$2,740	\$31,092	\$79,039	\$226,827
Cass County Public Library	107,824	47.9	\$2,728,211	\$164,830	\$172,765	\$14,532	\$352,127	\$1,132,268	\$4,212,606
Cedar County Library District	14,188	6.0	\$267,138	\$17,281	\$5,098	\$1,322	\$23,701	\$69,774	\$360,613
Centralia Public Library	4,053	4.0	\$243,370	\$29,775	\$16,925	\$17,558	\$64,258	\$77,944	\$385,572
Chaffee Public Library	3,057	1.3	\$50,729	\$11,261	\$0	\$1,641	\$12,902	\$13,394	\$77,025
Christian County Library	88,842	44.0	\$2,066,238	\$79,552	\$158,649	\$16,534	\$254,735	\$477,342	\$2,798,315
Clarence Public Library	738	0.4	\$5,014	\$6,928	\$0	\$0	\$6,928	\$0	\$11,942
Conran Memorial Library	2,493	0.9	\$28,991	\$9,692	\$240	\$250	\$10,182	\$992	\$40,165
Crawford County Library	21,563	8.4	\$381,832	\$50,066	\$4,768	\$22,475	\$77,309	\$174,735	\$633,876
Crystal City Public Library	4,740	2.4	\$78,887	\$14,543	\$2,837	\$110	\$17,490	\$25,180	\$121,557
Dade County Library	6,763	2.1	\$64,733	\$11,555	\$5,315	\$148	\$17,018	\$52,255	\$134,006

Missouri State Library: 2025 PLS Staff and Expenditures

Library	Pop. Served	Total FTE Paid Staff	Personnel Expenditures	Print Material & Serial Subscriptions	Electronic Materials	AV & Other Materials	Collection Expenditures	Other Expenditures	Total Expenditures
Dallas County Library	17,071	3.4	\$103,358	\$14,764	\$730	\$2,812	\$18,306	\$48,080	\$169,744
Daniel Boone Regional Library	223,840	132.2	\$10,722,403	\$473,809	\$1,435,845	\$129,354	\$2,039,008	\$3,199,008	\$15,960,419
Daviess County Library	8,430	3.7	\$134,339	\$10,063	\$7,770	\$7,458	\$25,291	\$71,387	\$231,017
De Soto Public Library	6,449	5.5	\$192,775	\$13,551	\$20,004	\$2,734	\$36,289	\$82,693	\$311,757
Desloge Public Library	4,823	1.5	\$59,380	\$11,590	\$2,035	\$403	\$14,028	\$17,014	\$90,422
Doniphan-Ripley County Library District	10,679	5.5	\$214,070	\$12,625	\$448	\$150	\$13,223	\$41,105	\$268,398
Douglas County Public Library	11,578	3.2	\$84,519	\$15,958	\$919	\$1,800	\$18,677	\$11,539	\$114,735
Dulany Memorial Library	1,563	0.9	\$32,860	\$5,193	\$2,420	\$269	\$7,882	\$49,560	\$90,302
Dunklin County Library	28,283	11.2	\$488,645	\$71,710	\$11,397	\$2,242	\$85,349	\$246,448	\$820,442
Farmington Public Library	18,217	9.9	\$383,199	\$55,119	\$7,025	\$7,753	\$69,897	\$140,813	\$593,909
Ferguson Municipal Public Library	18,527	8.4	\$559,716	\$44,058	\$22,847	\$4,540	\$71,445	\$175,081	\$806,242
Festus Public Library	12,706	5.7	\$312,016	\$24,005	\$4,633	\$2,286	\$30,924	\$159,524	\$502,464
Gentry County Library	4,492	3.1	\$171,349	\$9,527	\$3,324	\$553	\$13,404	\$57,224	\$241,977
Grundy County-Jewett Norris Library	9,808	5.8	\$220,067	\$13,285	\$5,011	\$41	\$18,337	\$103,785	\$342,189
Hamilton Public Library	1,690	1.3	\$46,625	\$8,961	\$2,582	\$1,151	\$12,694	\$13,648	\$72,967
Hannibal Free Public Library	17,086	8.8	\$545,496	\$48,119	\$8,352	\$1,026	\$57,497	\$190,446	\$793,439
Heartland Regional Library System	33,154	13.2	\$591,967	\$82,478	\$22,173	\$34,603	\$139,254	\$225,066	\$956,287
Henry County Library	21,946	9.0	\$433,976	\$49,765	\$25,688	\$638	\$76,091	\$321,332	\$831,399
Hickory County Library	8,279	3.7	\$142,394	\$29,347	\$9,964	\$7,910	\$47,221	\$32,369	\$221,984
Howard County Public Library	9,094	2.3	\$92,812	\$10,301	\$4,003	\$1,450	\$15,754	\$34,667	\$143,233
James Memorial Library	3,935	1.8	\$145,230	\$6,168	\$2,045	\$0	\$8,213	\$8,200	\$161,643
Jefferson County Library	135,409	55.5	\$3,070,636	\$270,587	\$252,974	\$112,540	\$636,101	\$1,054,615	\$4,761,352
Joplin Public Library	48,784	30.0	\$1,649,748	\$107,289	\$112,441	\$14,384	\$234,114	\$763,696	\$2,647,558
Kansas City Public Library	232,498	239.9	\$18,609,841	\$1,033,360	\$1,688,176	\$130,096	\$2,851,632	\$10,556,870	\$32,018,343
Keller Public Library of Dexter	7,927	2.8	\$138,619	\$25,931	\$9,925	\$0	\$35,856	\$65,289	\$239,764
Kirkwood Public Library	29,461	29.5	\$1,714,143	\$208,064	\$140,747	\$31,047	\$379,858	\$981,343	\$3,075,344
LaPlata Public Library	1,257	0.5	\$11,368	\$4,082	\$19	\$0	\$4,101	\$10,544	\$26,013
Lebanon-Laclede County Library	36,039	13.0	\$500,274	\$60,000	\$8,315	\$11,200	\$79,515	\$320,402	\$900,191
Lewis Library of Glasgow	1,087	1.0	\$26,885	\$9,072	\$205	\$0	\$9,277	\$3,016	\$39,178
Lilbourn Memorial Library	822	0.4	\$10,644	\$714	\$0	\$0	\$714	\$8,095	\$19,453
Little Dixie Regional Libraries	31,406	17.5	\$833,035	\$214,760	\$59,003	\$37,946	\$311,709	\$491,309	\$1,636,053
Livingston County Library	14,557	18.3	\$746,359	\$46,462	\$45,596	\$13,616	\$105,674	\$394,910	\$1,246,943
Louisiana Public Library	3,199	1.2	\$35,141	\$3,400	\$2,233	\$2,300	\$7,933	\$2,376	\$45,450
Macon Public Library	5,457	5.8	\$146,615	\$19,897	\$4,402	\$3,550	\$27,849	\$74,989	\$249,453
Maplewood Public Library	8,269	7.2	\$387,097	\$7,345	\$27,507	\$0	\$34,852	\$131,578	\$553,527
Marceline Carnegie Library	2,123	1.8	\$60,145	\$15,662	\$2,251	\$2,044	\$19,957	\$15,001	\$95,103
Marion County Library District	6,734	3.4	\$138,593	\$27,886	\$2,759	\$1,849	\$32,494	\$89,100	\$260,187
Marshall Public Library	13,806	6.2	\$245,011	\$18,879	\$1,744	\$830	\$21,453	\$71,057	\$337,521

Missouri State Library: 2025 PLS Staff and Expenditures

Library	Pop. Served	Total FTE Paid Staff	Personnel Expenditures	Print Material & Serial Subscriptions	Electronic Materials	AV & Other Materials	Collection Expenditures	Other Expenditures	Total Expenditures
Maryville Public Library	10,633	5.0	\$262,619	\$27,784	\$41,101	\$2,375	\$71,260	\$124,830	\$458,709
McDonald County Library	23,303	6.6	\$235,831	\$16,722	\$10,294	\$6,681	\$33,697	\$107,408	\$376,936
Mercer County Library	3,538	2.8	\$89,132	\$5,591	\$5,802	\$0	\$11,393	\$53,346	\$153,871
Mexico-Audrain County Library District	24,962	14.3	\$698,111	\$70,437	\$40,094	\$700	\$111,231	\$251,543	\$1,060,885
Mid-Continent Public Library	840,292	519.1	\$38,678,805	\$3,473,938	\$6,312,747	\$270,595	\$10,057,280	\$18,404,922	\$67,141,007
Mississippi County Library District	12,577	5.0	\$284,498	\$19,769	\$28,045	\$3,043	\$50,857	\$120,648	\$456,003
Missouri River Regional Library	90,553	39.0	\$2,034,959	\$132,676	\$168,481	\$60,873	\$362,030	\$973,912	\$3,370,901
Moniteau County Library	12,553	3.0	\$113,534	\$18,037	\$3,702	\$2,133	\$23,872	\$87,101	\$224,507
Monroe City Public Library	2,522	1.1	\$36,903	\$6,638	\$2,275	\$0	\$8,913	\$8,007	\$53,823
Montgomery City Public Library	2,811	2.5	\$116,551	\$19,412	\$3,704	\$4,345	\$27,461	\$100,588	\$244,600
Morgan County Library	21,006	5.9	\$262,817	\$22,569	\$27,972	\$2,133	\$52,674	\$228,407	\$543,898
Mound City Public Library	1,004	1.1	\$37,440	\$14,216	\$2,957	\$220	\$17,393	\$11,390	\$66,223
Mountain View Public Library	2,533	3.4	\$116,259	\$4,694	\$2,584	\$662	\$7,940	\$12,225	\$136,424
Neosho Newton County Library	54,445	11.0	\$574,963	\$63,333	\$34,020	\$5,712	\$103,065	\$430,711	\$1,108,739
Nevada Public Library	8,212	4.3	\$228,578	\$14,689	\$2,158	\$3,678	\$20,525	\$96,078	\$345,181
New Madrid County Library	14,829	8.3	\$316,693	\$32,953	\$5,991	\$2,361	\$41,305	\$181,735	\$539,733
Newburg Public Library	333	-	\$0	\$0	\$2,035	\$0	\$2,035	\$7,420	\$9,455
Norborne Public Library	634	1.0	\$5,822	\$3,898	\$0	\$0	\$3,898	\$2,736	\$12,456
North Kansas City Public Library	4,467	9.0	\$522,294	\$73,073	\$30,472	\$7,310	\$110,855	\$314,364	\$947,513
Northeast Missouri Library Service	17,686	8.1	\$259,840	\$24,964	\$4,756	\$3,928	\$33,648	\$91,306	\$384,794
Oregon County Library District	8,635	3.7	\$151,963	\$29,523	\$5,595	\$150	\$35,268	\$53,688	\$240,919
Oregon Public Library	837	0.7	\$23,286	\$3,585	\$0	\$0	\$3,585	\$6,248	\$33,119
Ozark Regional Library	22,163	9.4	\$425,262	\$33,553	\$21,781	\$1,442	\$56,776	\$169,359	\$651,397
Park Hills Public Library	8,587	3.3	\$155,344	\$12,591	\$6,377	\$1,629	\$20,597	\$46,932	\$222,873
Piedmont Public Library	1,897	2.2	\$58,759	\$4,371	\$0	\$226	\$4,597	\$11,508	\$74,864
Polk County Library	31,519	13.4	\$589,806	\$48,466	\$41,694	\$6,740	\$96,900	\$285,119	\$971,825
Poplar Bluff Public Library	16,225	15.6	\$729,516	\$34,988	\$101,328	\$8,486	\$144,802	\$530,581	\$1,404,899
Price James Memorial Library	2,920	1.8	\$40,752	\$9,718	\$4,245	\$0	\$13,963	\$25,251	\$79,966
Pulaski County Library	52,759	11.2	\$566,548	\$51,855	\$44,852	\$2,579	\$99,286	\$211,414	\$877,248
Putnam County Public Library	4,681	3.0	\$103,205	\$20,988	\$2,705	\$2,538	\$26,231	\$110,973	\$240,409
Puxico Public Library	873	0.8	\$21,915	\$1,190	\$0	\$0	\$1,190	\$23,701	\$46,806
Ralls County Library	10,065	3.2	\$124,184	\$23,878	\$3,163	\$0	\$27,041	\$87,627	\$238,852
Ray County Public Library	23,158	7.5	\$351,126	\$98,577	\$51,094	\$0	\$149,671	\$252,533	\$753,330
Reynolds County Library District	6,096	4.5	\$147,270	\$6,403	\$1,492	\$608	\$8,503	\$151,324	\$307,097
Rich Hill Memorial Library	1,232	0.6	\$15,655	\$5,377	\$0	\$0	\$5,377	\$7,380	\$28,412
Richmond Heights Memorial Library	9,286	10.7	\$652,049	\$73,097	\$41,084	\$8,251	\$122,432	\$137,646	\$912,127
Riverside Regional Library	85,846	19.4	\$951,752	\$69,952	\$24,805	\$15,262	\$110,019	\$452,969	\$1,514,740
Robertson Memorial Library	4,261	1.3	\$77,197	\$7,975	\$2,275	\$0	\$10,250	\$13,644	\$101,091

Missouri State Library: 2025 PLS Staff and Expenditures

Library	Pop. Served	Total FTE Paid Staff	Personnel Expenditures	Print Material & Serial Subscriptions	Electronic Materials	AV & Other Materials	Collection Expenditures	Other Expenditures	Total Expenditures
Rock Hill Public Library	4,750	3.9	\$237,548	\$19,291	\$10,806	\$749	\$30,846	\$177,904	\$446,298
Rolla Public Library	19,943	9.4	\$478,746	\$36,020	\$12,533	\$7,054	\$55,607	\$115,762	\$650,115
Rolling Hills Consolidated	41,674	28.1	\$1,436,256	\$115,918	\$159,700	\$22,955	\$298,573	\$551,294	\$2,286,123
Saint Charles City-County Library District	405,262	162.3	\$14,706,821	\$1,123,287	\$2,810,707	\$237,421	\$4,171,415	\$3,717,047	\$22,595,283
Saint Clair County Library	8,252	5.6	\$169,025	\$16,960	\$2,969	\$5,497	\$25,426	\$95,222	\$289,673
Saint Joseph Public Library	61,254	43.4	\$2,562,537	\$127,389	\$119,608	\$14,005	\$261,002	\$1,045,416	\$3,868,955
Saint Louis County Library	863,407	549.0	\$39,118,022	\$3,009,148	\$8,481,733	\$842,452	\$12,333,333	\$19,698,597	\$71,149,952
Saint Louis Public Library	301,578	328.5	\$21,359,567	\$911,726	\$1,406,772	\$285,674	\$2,604,172	\$8,319,953	\$32,283,692
Salem Public Library	4,608	3.2	\$134,307	\$10,510	\$4,411	\$713	\$15,634	\$56,965	\$206,906
Sarcoie Public Library	1,406	0.8	\$34,420	\$80	\$1,385	\$0	\$1,465	\$7,409	\$43,294
Scenic Regional Library	147,730	56.4	\$3,703,400	\$343,470	\$363,135	\$52,927	\$759,532	\$81,729	\$4,544,661
Schuyler County Library	4,032	2.1	\$89,789	\$12,826	\$2,377	\$0	\$15,203	\$39,906	\$144,898
Scotland County Memorial Library	4,716	2.9	\$90,718	\$7,881	\$2,035	\$1,060	\$10,976	\$47,868	\$149,562
Sedalia Public Library	20,022	7.0	\$490,940	\$45,669	\$9,832	\$2,847	\$58,348	\$309,507	\$858,795
Seymour Community Library	993	1.3	\$40,837	\$4,209	\$2,325	\$0	\$6,534	\$15,468	\$62,839
Sikeston Public Library	14,435	5.1	\$264,483	\$21,675	\$8,758	\$242	\$30,675	\$87,735	\$382,893
Slater Public Library	1,834	0.8	\$22,500	\$3,717	\$875	\$0	\$4,592	\$7,825	\$34,917
Springfield-Greene County Library District	298,915	192.8	\$10,687,966	\$1,004,712	\$1,626,637	\$116,601	\$2,747,950	\$3,634,590	\$17,070,506
Steele Public Library	1,853	0.4	\$12,918	\$1,908	\$2,035	\$0	\$3,943	\$2,035	\$18,896
Stone County Library	31,076	10.7	\$417,919	\$63,308	\$20,853	\$14,028	\$98,189	\$271,596	\$787,704
Sullivan County Public Library	5,999	1.4	\$43,535	\$12,815	\$2,275	\$822	\$15,912	\$20,294	\$79,741
Sweet Springs Public Library	1,316	0.8	\$23,316	\$1,790	\$1,853	\$0	\$3,643	\$6,216	\$33,175
Texas County Library	24,487	6.1	\$226,550	\$17,072	\$7,966	\$3,090	\$28,128	\$125,767	\$380,445
Trails Regional Library	82,736	42.9	\$2,467,865	\$159,804	\$95,986	\$24,554	\$280,344	\$580,481	\$3,328,690
University City Public Library	35,065	26.3	\$2,013,517	\$208,275	\$112,828	\$46,659	\$367,762	\$848,837	\$3,230,116
Valley Park Community Library	3,140	1.6	\$62,602	\$6,519	\$3,351	\$3,485	\$13,355	\$39,509	\$115,466
Washington County Library	23,514	5.3	\$338,025	\$37,726	\$12,487	\$1,505	\$51,718	\$147,033	\$536,776
Washington Public Library	8,771	9.0	\$527,754	\$62,541	\$1,622	\$28,086	\$92,249	\$310,465	\$930,468
Webb City Public Library	13,031	4.5	\$247,192	\$25,834	\$19,706	\$6,928	\$52,468	\$117,557	\$417,217
Webster County Library	38,092	9.6	\$386,613	\$43,730	\$33,393	\$6,187	\$83,310	\$182,239	\$652,162
Webster Groves Public Library	24,010	15.5	\$857,491	\$84,455	\$99,908	\$7,617	\$191,980	\$298,392	\$1,347,863
Wellsville Public Library	998	0.6	\$14,488	\$2,307	\$247	\$0	\$2,554	\$7,049	\$24,091
West Plains Public Library	12,184	7.5	\$429,806	\$38,515	\$23,771	\$50	\$62,336	\$58,346	\$550,488
Willow Springs Public Library	2,164	1.6	\$51,072	\$3,993	\$2,313	\$3,993	\$10,299	\$30,137	\$91,508
Worth County Library	1,973	0.5	\$15,338	\$2,767	\$2,056	\$0	\$4,823	\$3,115	\$23,276
Wright County Library	18,188	5.4	\$194,584	\$32,501	\$5,290	\$1,749	\$39,540	\$122,647	\$356,771

Missouri State Library: 2025 PLS Staff and Expenditures

Missouri (N=149)	Pop. Served	Total FTE Paid Staff	Personnel Expenditures	Print Material & Serial Subscript.	Electronic Materials	AV & Other Materials	Collection Expend.	Other Expend.	Total Expend.
Average	37,792	22	\$1,417,547	\$110,977	\$182,063	\$20,023	\$313,064	\$612,056	\$2,342,667
Median	8,611	4	\$193,680	\$19,085	\$5,055	\$2,229	\$30,076	\$87,364	\$309,427
Total	5,668,852	3,289	\$212,632,107	\$16,646,603	\$27,309,517	\$3,003,508	\$46,959,628	\$91,808,382	\$351,400,117

75,000+ (N=14)	Pop. Served	Total FTE Paid Staff	Personnel Expenditures	Print Material & Serial Subscript.	Electronic Materials	AV & Other Materials	Collection Expend.	Other Expend.	Total Expend.
Average	278,909	174	\$12,207,606	\$875,061	\$1,785,672	\$164,958	\$2,825,691	\$5,163,165	\$20,196,462
Median	185,785	94	\$7,195,683	\$408,640	\$884,954	\$114,571	\$1,399,270	\$2,165,638	\$10,360,886
Total	3,904,732	2,429	\$170,906,486	\$12,250,851	\$24,999,412	\$2,309,415	\$39,559,678	\$72,284,303	\$282,750,467

30,000-74,999 (N=17)	Pop. Served	Total FTE Paid Staff	Personnel Expenditures	Print Material & Serial Subscript.	Electronic Materials	AV & Other Materials	Collection Expend.	Other Expend.	Total Expend.
Average	43,996	20	\$1,027,947	\$104,965	\$61,880	\$19,707	\$186,552	\$488,169	\$1,702,668
Median	41,674	16	\$833,035	\$94,814	\$46,609	\$14,028	\$159,416	\$425,826	\$1,500,666
Total	747,940	333	\$17,475,105	\$1,784,412	\$1,051,956	\$335,017	\$3,171,385	\$8,298,865	\$28,945,355

15,000-29,999 (N=23)	Pop. Served	Total FTE Paid Staff	Personnel Expenditures	Print Material & Serial Subscript.	Electronic Materials	AV & Other Materials	Collection Expend.	Other Expend.	Total Expend.
Average	21,376	10	\$487,572	\$51,628	\$29,593	\$6,010	\$87,231	\$237,858	\$812,661
Median	21,563	8	\$425,262	\$44,058	\$12,533	\$3,090	\$69,343	\$175,081	\$651,397
Total	491,657	228	\$11,214,151	\$1,187,440	\$680,635	\$138,241	\$2,006,316	\$5,470,731	\$18,691,198

9,500-14,999 (N=19)	Pop. Served	Total FTE Paid Staff	Personnel Expenditures	Print Material & Serial Subscript.	Electronic Materials	AV & Other Materials	Collection Expend.	Other Expend.	Total Expend.
Average	12,343	6	\$262,246	\$22,385	\$12,121	\$2,342	\$36,848	\$115,316	\$414,410
Median	12,553	5	\$247,192	\$19,769	\$5,098	\$1,800	\$27,732	\$87,735	\$382,893
Total	209,833	100	\$4,458,181	\$380,546	\$206,062	\$39,807	\$626,415	\$1,960,369	\$7,044,965

Missouri State Library: 2025 PLS Staff and Expenditures

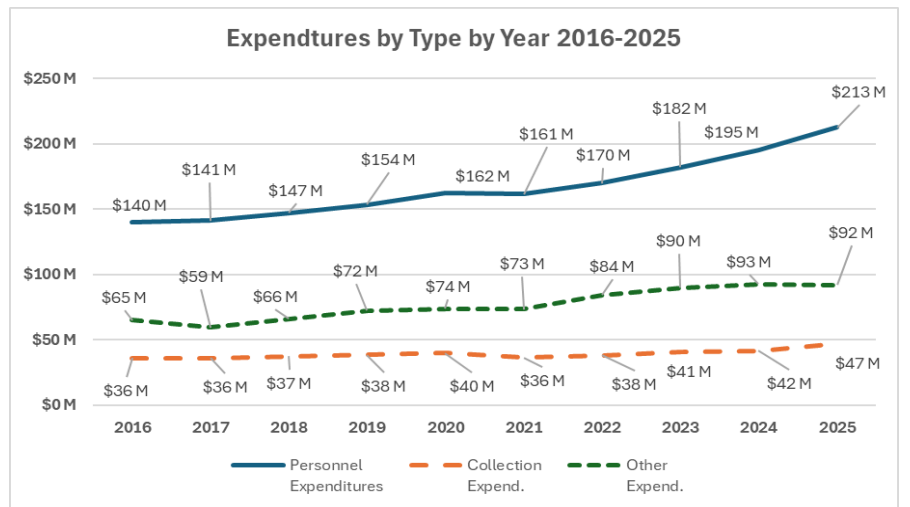
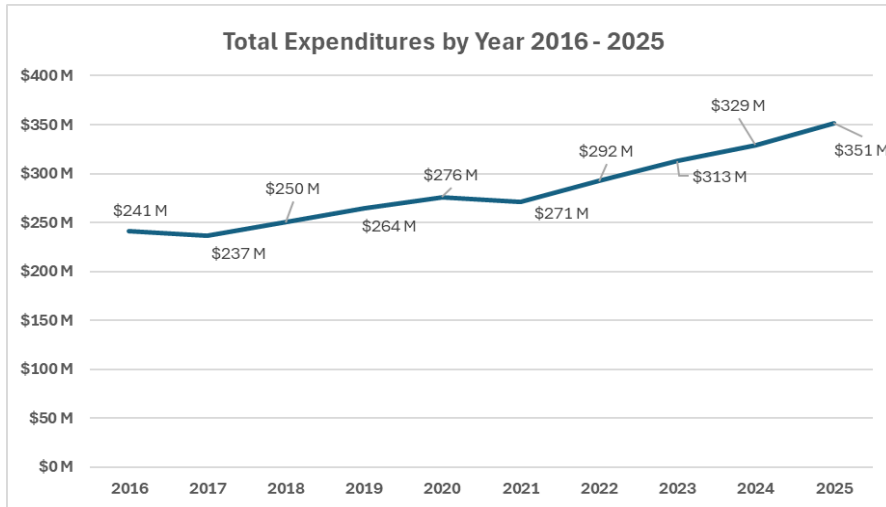
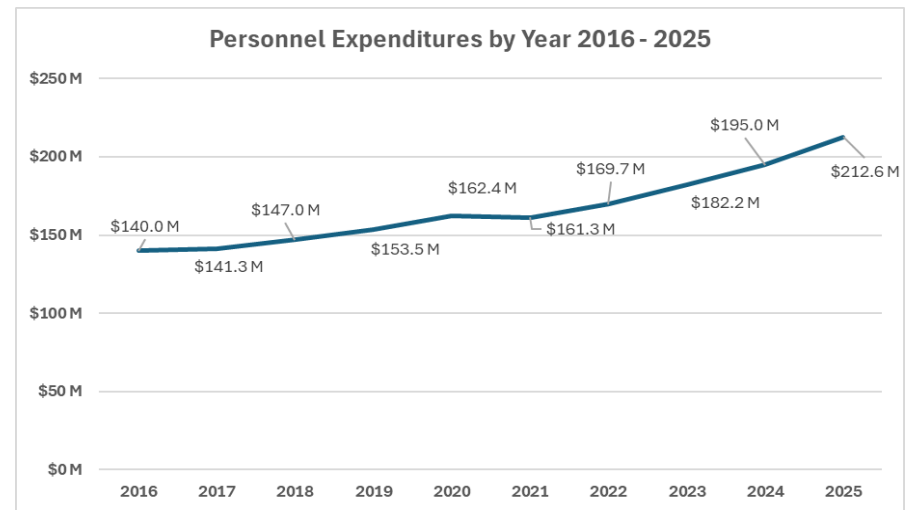
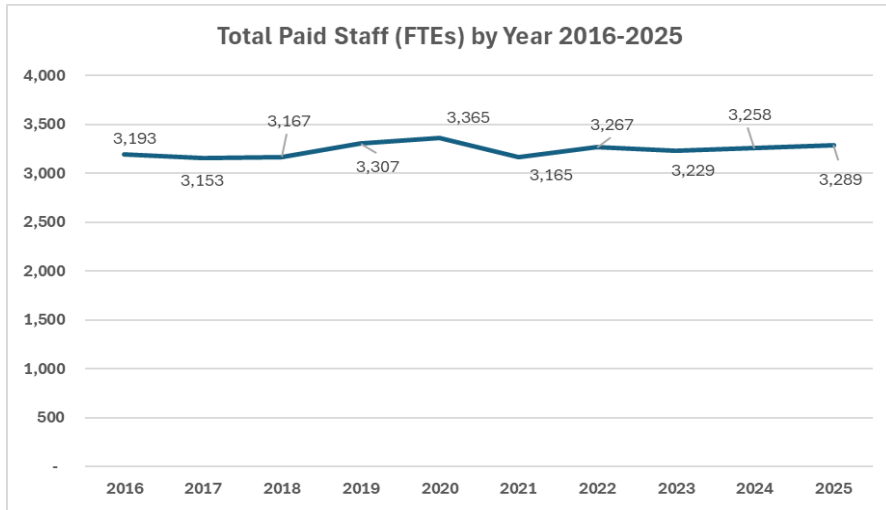
6,000-9,499 (N=19)	Pop. Served	Total FTE Paid Staff	Personnel Expenditures	Print Material & Serial Subscript.	Electronic Materials	AV & Other Materials	Collection Expend.	Other Expend.	Total Expend.
Average	7,911	5	\$216,801	\$23,514	\$10,150	\$4,446	\$38,110	\$92,500	\$347,411
Median	8,252	4	\$151,963	\$14,689	\$5,315	\$1,849	\$25,426	\$71,387	\$240,919
Total	150,300	86	\$4,119,224	\$446,761	\$192,848	\$84,483	\$724,092	\$1,757,493	\$6,600,809

3,000-5,999 (N=24)	Pop. Served	Total FTE Paid Staff	Personnel Expenditures	Print Material & Serial Subscript.	Electronic Materials	AV & Other Materials	Collection Expend.	Other Expend.	Total Expend.
Average	4,410	3	\$133,212	\$16,690	\$5,162	\$3,245	\$25,097	\$62,399	\$220,708
Median	4,480	3	\$103,296	\$12,821	\$2,651	\$1,351	\$15,980	\$46,568	\$157,757
Total	105,837	75	\$3,197,077	\$400,568	\$123,897	\$77,871	\$602,336	\$1,497,586	\$5,296,999

1,500-2,999 (N=19)	Pop. Served	Total FTE Paid Staff	Personnel Expenditures	Print Material & Serial Subscript.	Electronic Materials	AV & Other Materials	Collection Expend.	Other Expend.	Total Expend.
Average	2,132	1	\$47,916	\$6,795	\$1,963	\$923	\$9,680	\$20,285	\$77,881
Median	1,935	1	\$42,394	\$5,330	\$2,209	\$188	\$8,514	\$14,325	\$73,916
Total	42,642	28	\$958,322	\$135,898	\$39,256	\$18,454	\$193,608	\$405,698	\$1,557,628

Under 1,499 (N=15)	Pop. Served	Total FTE Paid Staff	Personnel Expenditures	Print Material & Serial Subscript.	Electronic Materials	AV & Other Materials	Collection Expend.	Other Expend.	Total Expend.
Average	994	1	\$18,973	\$3,758	\$966	\$14	\$4,737	\$8,334	\$32,044
Median	1,001	1	\$17,093	\$2,946	\$221	\$0	\$3,771	\$7,395	\$30,742
Total	15,911	11	\$303,561	\$60,127	\$15,451	\$220	\$75,798	\$133,337	\$512,696

Missouri State Library: 2025 PLS Staff and Expenditures



Missouri State Library: 2025 PLS Staff and Expenditures

