
Executive Departments

Government exists to serve, and a broad network of government organizations has been created to accomplish the purpose. The Missouri Constitution (Article II, Section 1) states: “The powers of government shall be divided into three distinct departments—the legislative, executive and judicial.” This section also prohibits persons within each branch from exercising powers of the other branches. From these three branches spring the variety of organizations which deliver services of state government.

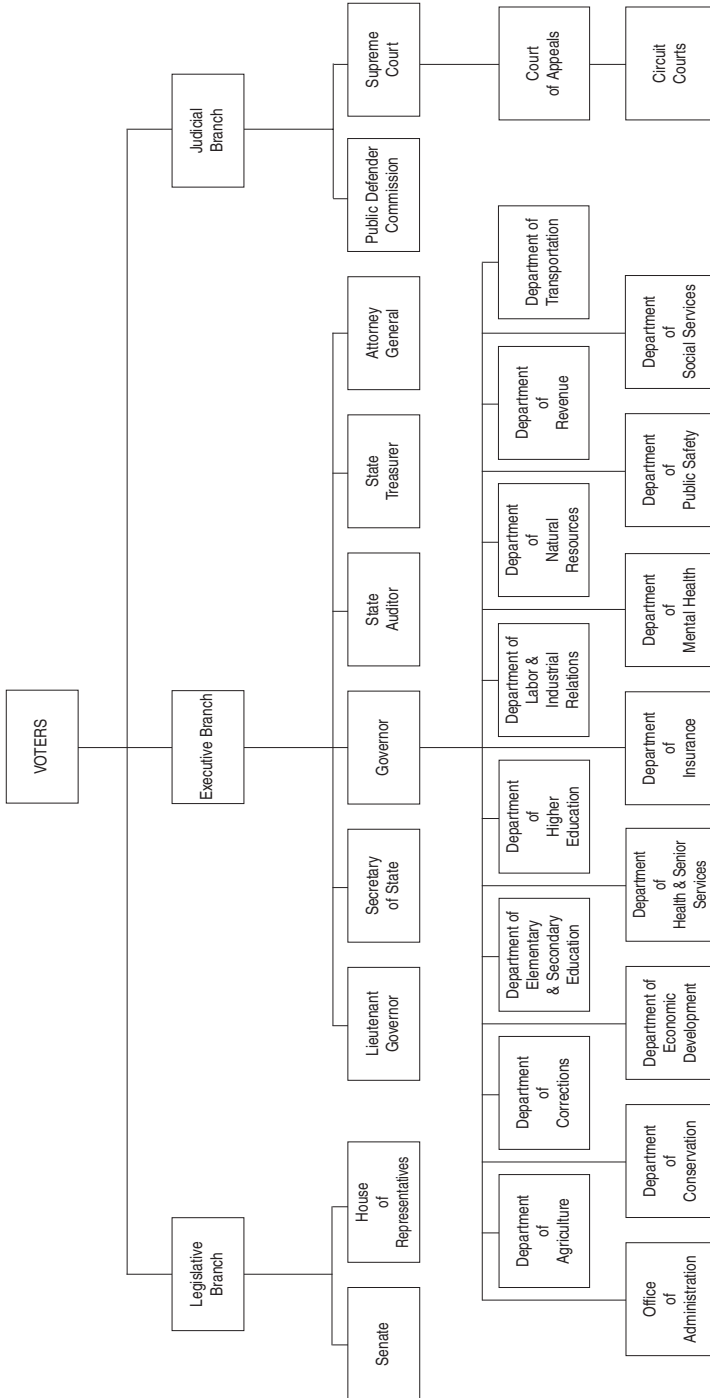
The many different names used by these groups—departments, divisions, agencies, boards, commissions, bureaus, units, sections, programs and others—can make it difficult to determine which area of government is responsible for certain services, and sorting out responsibilities or relationships within the governmental framework.

It is through the executive branch that the greatest proportion of state services are delivered. The Constitution (Article IV, Section 12) and the Reorganization Act of 1974 have established a number of “executive departments” to deal with specific areas of interest. A chart showing the present state departments is shown on the following page.

The Missouri Constitution provides for 16 specific departments: the Office of Administration and the departments of Agriculture, Conservation, Corrections, Economic Development, Elementary and Secondary Education, Health and Senior Services, Higher Education, Insurance, Labor and Industrial Relations, Mental Health, Natural Resources, Public Safety, Revenue, Social Services and Transportation.

Within each executive department exists a variety of offices of varying size and scope which deal with specific services. Traditionally, “divisions” are the next-largest organizations within departments and function to bring together smaller-sized groups, such as “bureaus,” “sections” or “units.” Divisions may be governed by a “board” or “commission” composed of members who are either appointed by the governor, made members by law or appointed by a department official. State agencies may administer certain sections of state law as defined by the *Revised Statutes of Missouri*, may develop their own rules and regulations as promulgated in the *Missouri Register* and *Code of State Regulations* or may institute programs and policies which address the needs of their areas of service.

Generally speaking, the legislative and judicial branches rely on committees or other small, appointed groups to perform research, develop policy, provide advocacy services or handle administrative duties. In these two branches services are delivered through the offices of the elected officials themselves and not by related agencies.



‡ Some circuit court judges are elected. Others are appointed under the Missouri Nonpartisan Plan. All are subject to public vote for retention

† Indicates appointed offices subject to public vote for retention

* Indicates elected offices

Office of Administration

PO Box 809, Jefferson City 65102

The Office of Administration is the state's service and administrative control agency. Created by the General Assembly on January 15, 1973, it combines and coordinates the central management functions of state government. Its responsibilities were clarified and amended by the Omnibus State of Missouri Reorganization Act of 1974.

The chief administrative officer is the commissioner of administration who is appointed by the governor with the advice and consent of the Senate. The commissioner appoints the deputy commissioners and the division directors of the Office of Administration. The divisions are: Accounting; Budget and Planning; Information Services; Facilities Management, Design and Construction; General Services; Personnel; and Purchasing and Materials Management.

Commissioner	Michael N. Keathley	(573) 751-1851
<i>State Capitol, Rm. 125</i>		
Assistant Commissioner	Randall G. Allen	(573) 751-1851
<i>State Capitol, Rm. 125</i>		
General Counsel	Henry Herschel	(573) 751-1851
<i>State Capitol, Rm. 125</i>		

Division of Accounting

Truman State Office Building, Rm. 579

Director	Tom Sadowski	(573) 751-4013
--------------------	------------------------	----------------

Division of Budget and Planning

State Capitol, Rm. 124

Deputy Commissioner	Larry Schepker	(573) 751-2345
-------------------------------	--------------------------	----------------

Division of Facilities Management, Design and Construction

Truman State Office Building, Rm. 730

Director	Dave Mosby	(573) 751-1034
--------------------	----------------------	----------------

Division of General Services

Truman State Office Building, Rm. 760

Director	Mark S. Kaiser	(573) 751-4656
--------------------	--------------------------	----------------

Division of Information Services

Truman State Office Building, Rm. 280

Chief Information Officer	Dan Ross	(573) 526-7741
-------------------------------------	--------------------	----------------

Division of Personnel

Truman State Office Building, Rm. 430, PO Box 388

Director	Alma McKinney	(573) 751-3053
--------------------	-------------------------	----------------

Personnel Advisory Board

Truman State Office Building, Rm. 430, PO Box 388 (573) 751-3053

Division of Purchasing and Materials Management

Truman State Office Building, Rm. 630

Director	James Miluski	(573) 751-3273
--------------------	-------------------------	----------------

Administrative Hearing Commission*Truman State Office Building, Rm. 640*

Commissioner	June Striegel Doughty	(573) 751-2422
Commissioner	John Kopp	(573) 751-2422
Commissioner	Karen Winn	(573) 751-2422

Board of Fund Commissioners*Truman State Office Building, Rm. 579*

Executive Secretary	Mark A. Kaiser	(573) 751-2971
-------------------------------	--------------------------	----------------

Children's Trust Fund*PO Box 1641, Jefferson City 65102*

Executive Director	William Heberle	(573) 751-5147
------------------------------	---------------------------	----------------

Governor's Council on Disability*Truman State Office Building, Rm. 250-A*

Executive Director	Robert Honan	(573) 751-2600
------------------------------	------------------------	----------------

Health and Educational Facilities Authority*One City Center, Ste. 1310, St. Louis 63101*(314) 231-3355**Jackson County Sports Complex Authority***8501 Stadium Dr., Kansas City 64129*(816) 921-3600**Missouri Assistive Technology Advisory Council***4731 S. Cochise, Ste. 114, Independence 64055*

Executive Director	Diane Golden	(816) 373-5193
------------------------------	------------------------	----------------

Missouri Consolidated Health Care Plan*PO Box 104355, 832 Weathered Rock Ct., Jefferson City 65110*(573) 751-8881**Missouri Ethics Commission***PO Box 1254, Jefferson City 65102*(573) 751-2020**Missouri Public Entity Risk Management Fund***398 Dix Rd., Ste. 201, Jefferson City 65109*(573) 751-1837**Missouri State Employees' Deferred Compensation Commission***Truman State Office Building, Rm. 579*(573) 751-7845**Missouri State Employees' Retirement System***907 Wildwood Dr., PO Box 209, Jefferson City 65102*(573) 751-2342**Missouri State Employees' Voluntary Life Insurance Commission***Truman State Office Building, Rm. 579*(573) 751-7845**Office of the Child Advocate***PO Box 809, Jefferson City 65102*

Ombudsman	Mary McEniry	(866) 457-2302
---------------------	------------------------	----------------

Office of Equal Opportunity*Truman State Office Building, Rm. 840*

Director	Marvin Eason	(573) 751-8130
--------------------	------------------------	----------------

Second State Capitol Commission*Truman State Office Building, Rm. 730*(573) 751-1034

Department of Agriculture

1616 Missouri Blvd., PO Box 630, Jefferson City 65102

Like Missouri agriculture, the duties of the Missouri Department of Agriculture are diverse. The department enforces those state laws that regulate and market Missouri's agricultural industry. The agency administers programs that protect the state's producers, processors, distributors and consumers of food, fuel and fiber, while marketing Missouri agricultural products at home and abroad.

Created by the General Assembly in 1933, the agriculture department is managed by a director who is appointed by the governor and confirmed by the Senate. The director determines department policy, oversees the department's divisions and disseminates information to the governor, the state legislature, industry representatives and the public.

- DirectorFred Ferrell(573) 751-3359
- Deputy DirectorMatt Boatright(573) 526-0948
- Director, Weights and Measures(Vacancy)
- Director, Agriculture Business DevelopmentTony Stafford(573) 751-2129
- Director, Animal Health (State Veterinarian)Dr. Taylor Woods(573) 751-3377
- Director, Grain Inspection
and WarehousingRich Kaiser(573) 751-5515
- Director, Plant IndustriesJim Lea(573) 751-5506
- Director, Market Information and OutreachLoyd Wilson(573) 751-3451
- Director, State FairMel Willard(660) 530-5600
Missouri State Fair, 2503 W. 26th St., Sedalia 65301
- State StatisticianGene Danekas(573) 876-0950
Missouri Agricultural Statistics Service, PO Box L, Columbia 65205

State Milk Board

911-D Leslie Blvd., Jefferson City 65101

- ChairRon Boyer(417) 864-1663
- Executive SecretaryTerry Long(573) 751-3830

Missouri Agricultural and Small Business Development Authority

1616 Missouri Blvd., PO Box 630, Jefferson City 65102

- Executive DirectorTony Stafford(573) 751-2129

Department of Conservation

2901 W. Truman Blvd., PO Box 180, Jefferson City 65102-0180

The Department of Conservation, authorized by an amendment to the Constitution, was created for better management of the state's forest, fish and wildlife resources. Since the department funding was increased in 1977 by an addition to the state sales tax, the department has purchased more than 454,500 acres of public land for wildlife, fisheries, forestry conservation and public recreation, and has substantially expanded most programs—most notably conservation education, law enforcement, wildlife services, and activities dealing with endangered species, non-game wildlife and natural areas.

The department is headed by the Conservation Commission, whose four members are appointed by the governor with the advice and consent of the Senate, serving for staggered terms of six years each. The commissioners appoint the department director who, along with two deputy directors and two assistants to the director, directs programs and activities through the divisions of administrative services, fisheries, forestry, human resources, outreach and education, private land services, protection, resource science and wildlife.

Conservation Commission

Member	Stephen C. Bradford	(573) 339-1864
Member	Cynthia Metcalfe	(314) 567-3735
Member	Anita B. Gorman	(816) 452-4141
Member	Lowell Mohler	(573) 584-9429

Administrative

Director	John D. Hoskins	(573) 522-4115, ext. 3212
Deputy Director - Field	John W. Smith	(573) 522-4115, ext. 3217
Deputy Director - Administration	Steve Wilson	(573) 522-4115, ext. 3223
Assistant to Director - Governmental Relations (legislative liaison)	Bob Ziehmer	(573) 522-4115, ext. 3601
Assistant to Director - Public Affairs	Denise Garnier	(573) 522-4115, ext. 3216
General Counsel	Craig Evans	(573) 522-4115, ext. 3210
Internal Auditor	Nancy Dubbert	(573) 522-4115, ext. 3522

Division Administrators:

Administrative Services	Carter Campbell	(573) 522-4115, ext. 3606
Fisheries	Steve Eder	(573) 522-4115, ext. 3174
Forestry	Bob Krepps	(573) 522-4115, ext. 3300
Human Resources	Debbie Goff	(573) 522-4115, ext. 3225
Outreach and Education	Lorna Domke	(573) 522-4115, ext. 3235
Private Land Services	Lisa Allen	(573) 522-4115, ext. 3120
Protection	Dennis Steward	(573) 522-4115, ext. 3258
Resource Science	Dale Humburg	(573) 522-4115, ext. 3191
Wildlife	David W. Erickson	(573) 522-4115, ext. 3142

Department of Corrections

PO Box 236, Jefferson City 65102

The Department of Corrections supervises convicted felons and misdemeanants.

Organized as a separate department of state government by an act of the legislature in 1981 and reorganized July 1, 1993, it is comprised of four divisions: Administration/Human Services, Adult Institutions, Division of Offender Rehabilitative Services, and Probation and Parole. The executive staff includes the department directors, deputy director and division directors.

The Division of Administration/Human Services, consisting of four units, provides support to the divisions of Adult Institutions and Offender Rehabilitative Services, the Board of Probation and Parole and the department's technical staff.

The Division of Adult Institutions oversees the care and custody of inmates in 21 correctional institutions across the state.

The Division of Offender Rehabilitative Services' goal is inmate rehabilitation through the provision of specialized education, job training and treatment programs.

The Board of Probation and Parole consists of seven members, appointed by the governor with the advice and consent of the Senate. They are assisted by four parole analysts who sit with the board on hearings and make recommendations on parole reviews. This division is responsible for the community supervision of offenders.

Office of the Director

DirectorLarry Crawford(573) 751-2389
Deputy DirectorDavid Rost(573) 751-2389
General CounselDonna Coleman(573) 526-6506
General ServicesJim Grothoff(573) 751-7172
ComptrollerLenard Lenger(573) 526-6441
Information SystemsDon Lloyd(573) 526-6452
Research/Evaluation UnitDavid Oldfield(573) 526-0270
Public Information OfficerJohn Fougere(573) 522-1118
Constituent ServicesLisa Jones(573) 526-6530
Inspector GeneralMike Payne(573) 526-6504
BudgetJoe Eddy(573) 526-6511
LegislationMatt Sturm(573) 526-6499
PlanningChris Egbert(573) 526-6587

Division of Human Services

DirectorVictoria Myers(573) 526-6472
PersonnelRichard Enyard(573) 526-6475
Staff TrainingRoyce Hudson(573) 751-4040
Employee HealthJulie Ives(573) 526-6518
Victim ServicesKay Crockett(573) 526-6516
Religious/Spiritual ProgrammingLawrence Morganfield(573) 526-6489
Volunteer CoordinatorGordon Howard(573) 526-6491

Division of Offender Rehabilitative Services

DirectorRanee Kaiser(573) 526-6493
----------	-------------------	---------------------

Assistant Director, Health Services	Judy Hudson	(573) 526-6498
Assistant Director, Education Services	Jon Warren	(573) 526-6534
Assistant Director, Substance Abuse Services	Marta Nolin	(573) 526-6545
Chief, Mental Health Services	Mariann Atwell	(573) 526-6523
Administrator, Missouri Vocational Enterprises	Wilbur W. Gooch	(573) 751-6663

Division of Adult Institutions

Director	(Vacancy)	(573) 526-6524
Assistant Director, Zone I	Steve Long	(573) 526-6548
Assistant Director, Zone II	Tom Clements	(573) 522-1926
Assistant Director, Zone III	Patricia Cornell	(573) 526-6532
Assistant to the Director	Dwayne Kempker	(573) 526-6526
Central Transfer Authority	Charlie Baker	(573) 526-6436

Institutions

Algoa Correctional Center		
Superintendent	Michael Murphy	(573) 751-3911
<i>PO Box 538, Jefferson City 65102</i>		
Boonville Correctional Center		
Superintendent	Ron Schmitz	(660) 882-6521
<i>PO Box 379, Boonville 65233</i>		
Boonville Treatment Center		
Superintendent	Becky Ehlers	(660) 882-6521
<i>PO Box 67, Boonville 65233</i>		
Camp Hawthorne Functional		
Unit Manager	Mike Terry	(573) 348-3194
<i>PO Box 140, Kaiser 65047</i>		
Central Missouri Correctional Center		
Superintendent	Kelly Lock	(573) 751-2053
<i>PO Box 539, Jefferson City 65102</i>		
Chillicothe Correctional Center		
Superintendent	Jennifer Miller	(660) 646-4032
<i>1500 W. Third St., Chillicothe 64601</i>		
Cremer Therapeutic Community Center		
Superintendent	John Bowen	(573) 592-4013
<i>PO Box 70, Fulton 65251</i>		
Crossroads Correctional Center		
Superintendent	Mike Kemna	(816) 632-2727
<i>1115 E. Pence Rd., Cameron 64429</i>		
Eastern Reception, Diagnostic and Correctional Center		
Superintendent	Jim Purkett	(573) 358-4412
<i>2727 Hwy. K, Bonne Terre 63628</i>		
Farmington Correctional Center		
Superintendent	Al Luebbers	(573) 756-8001
<i>1012 W. Columbia, Farmington 63640</i>		
Farmington Treatment Center		
Superintendent	Mike Gann	(573) 756-8001
<i>1014 W. Columbia, Farmington 63640</i>		
Fulton Reception and Diagnostic Center		
Superintendent	Stewart Epps	(573) 592-4040
<i>PO Box 190, Fulton 65251</i>		
Jefferson City Correctional Center		
Superintendent	David Dormire	(573) 751-3224
<i>PO Box 597, Jefferson City 65102</i>		

Maryville Treatment Center	
Superintendent	Joe Ledbetter .(660) 582-6542
<i>30227 US Hwy. 136, Maryville 64468-9516</i>	
Mineral Area Treatment Center	
Superintendent	Mike Gann .(573) 756-8001
<i>Rt. 2, Box 2222, Mineral Point 63660</i>	
Missouri Eastern Correctional Center	
Superintendent	Larry Rowley .(636) 257-3322
<i>18701 Hwy. 66, Pacific 63069</i>	
Moberly Correctional Center	
Superintendent	James Gammon .(660) 263-3778
<i>PO Box 7, Moberly 65270</i>	
Northeast Correctional Center	
Superintendent	Jim Moore .(573) 324-9975
<i>13698 Pike 46 Airport Rd., Bowling Green 63334</i>	
Ozark Correctional Center (Lease/Purchase)	
Superintendent	Virgil Lansdown .(417) 767-4491
<i>Rt. 2, Box 1-P, 929 Honor Camp Ln., Fordland 65652</i>	
Potosi Correctional Center (Lease/Purchase)	
Superintendent	Donal Roper .(573) 438-6000
<i>Rt. 2, Box 2222, Mineral Point 63660</i>	
Southeast Correctional Center	
Superintendent	Chuck Dwyer .(573) 683-4409
<i>300 E. Pedro Simmons Dr., Charleston 63834</i>	
South Central Correctional Center	
Superintendent	Michael Bowersox .(573) 674-4470
<i>17864 Hwy. 32, Licking 65542</i>	
Tipton Correctional Center	
Superintendent	Jill McGuire .(660) 433-2031
<i>619 N. Osage Ave., Tipton 65081-8038</i>	
Western Missouri Correctional Center	
Superintendent	Steven Moore .(816) 632-1390
<i>609 E. Pence Rd., Cameron 64429</i>	
Western Reception, Diagnostic and Correctional Center	
Superintendent IV	William Burgess .(816) 387-2158
<i>3401 Faraon, St. Joseph 64506</i>	
Western Region Treatment Center	
Superintendent	Sonny Collins .(816) 387-2264
<i>3401 Faraon, St. Joseph 64506</i>	
Women's Eastern Reception, Diagnostic and Correctional Center	
Superintendent	(Vacancy) .(573) 594-6686
<i>PO Box 300, 1101 E. Hwy. 54, Vandalia 63382</i>	

Division of the Board of Probation and Parole

1511 Christy Dr., PO Box 267, Jefferson City 65102, (573) 751-8488

Chair	Denis Agniel .(573) 751-8488
Member	Ansel Card .(573) 751-8488
Member	Wayne Crump .(573) 751-8488
Member	Fannie Gaw .(573) 751-8488
Member	Penny Hubbard .(573) 751-8488
Member	Robert Robinson .(573) 751-8488
Member	Dana D. Thompson .(573) 751-8488
Chief State Supervisor	Scott Johnston .(573) 522-1515

Assistant Division Directors

Eastern Zone	Paul Caspari	(573) 526-6577
Western Zone	Jandra Carter	(573) 526-7800
Administration	Barne Ploch	(573) 526-6570

Probation and Parole Administrators

Central Missouri <i>211 Compass Point, St. Charles 63301</i>	Glenn Brucker	(636) 940-3333
Eastern Missouri <i>220 S. Jefferson, St. Louis 63103</i>	Nancy McCarthy	(314) 877-1176
Kansas City Community Release Center <i>651 Mulberry, Kansas City 64101</i>	Kim Jones	(816) 842-7467
Northwest Missouri <i>205 Thompson Rd., Sedalia 65301</i>	Tom Hodges	(660) 530-5530
Southeast Missouri <i>4621 Yeager Rd., Hillsboro 63050</i>	Deborah Cotner	(636) 789-3392
Southwest Missouri <i>1735 W. Catalpa, Ste. A, Springfield 65807</i>	Dardi Smith	(417) 895-5700
St. Louis Community Release Center <i>1621 N. First St., St. Louis 63102</i>	Janet Schneider	(314) 877-0300
Western Missouri <i>330 E. 20th St., Kansas City 64108</i>	Marlene Weatherford	(816) 889-7600

Department of Economic Development

PO Box 1157, Jefferson City 65102

The Department of Economic Development is composed of agencies that execute statutory requirements and department policy in areas of economic development, regulation of business and financial institutions, and professional registration.

Divisions and programs relating to development are: Community Development; Business Development and Trade; Division of Tourism; State Council on the Arts; Missouri Housing Development Commission; Division of Workforce Development; Women's Council; and Missouri Development Finance Board.

Regulatory agencies include: Division of Finance; Division of Credit Unions; Public Service Commission; the Public Counsel; and the Division of Professional Registration, which is made up of various licensing boards and offices.

The department is administered by a director appointed by the governor and confirmed by the Senate. The director appoints central management staff and principal division directors and is assisted by the deputy director.

Administrative Services

Truman State Office Building, Rm. 680, PO Box 1157, Jefferson City 65102

Director	Greg Steinhoff	(573) 751-4962
Acting Deputy Director	Garry Taylor	(573) 751-3946
General Counsel	Daryl Hylton	(573) 751-5097
Director, Policy	Brian Grace	(573) 751-3946
Director, Financial Systems	Arlan Holmes	(573) 751-4996
Director, Administration	Donna Prenger	(573) 751-4996
Director, Management Information Systems	Bob Meinhardt	(573) 751-5464
Director, Human Resources	Sarah Schuette	(573) 751-3916
Director, Communications	Paul Sloca	(573) 751-9065

Community and Economic Development Agencies

Business Development and Trade

Truman State Office Building, Rm. 720, PO Box 118, Jefferson City 65102

Director	Randa Hayes	(573) 751-5098
----------	-------------	----------------

Community Development

Truman State Office Building, Rm. 770, PO Box 118, Jefferson City 65102

Director	Sallie Hemenway	(573) 751-4241
----------	-----------------	----------------

Missouri Arts Council

Wainwright State Office Complex, 111 N. Seventh St., Ste. 105, St. Louis 63101

Chair	Betty Wilson	(314) 340-6845
Interim Executive Director	Beverly Strohmeier	(314) 340-6845

Missouri Development Finance Board

Governor Office Building, 200 Madison St., Ste. 1000, PO Box 567, Jefferson City 65102

Chair	Elizabeth T. Solberg	(573) 751-8479
Director	Bob Miserez	(573) 751-8479

Missouri Housing Development Commission*3435 Broadway, Kansas City 64111*

Chair Gary D. Collins (816) 759-6600
 Director Erica Dobreff (816) 759-6600

Division of Tourism*Truman State Office Building, Rm. 290, PO Box 1055, Jefferson City 65102*

Chair, Tourism Commission Raeanne Presley (573) 751-4133
 Director John Robinson (573) 751-4133

Division of Workforce Development*421 E. Dunklin, PO Box 1087, Jefferson City 65101*

Acting Director Steve Kraus (573) 751-3349

Women's Council*Truman State Office Building, Rm. 680, PO Box 1157, Jefferson City 65102*

Chair Kim Carlos (573) 751-0810
 Director (Vacancy) (573) 751-0810

Regulatory Agencies**Division of Credit Unions***Truman State Office Building, Rm. 720, Jefferson City 65102*

Director Sandra K. Branson (573) 751-3419

Division of Finance*Truman State Office Building, Rm. 630, PO Box 716, Jefferson City 65102*

Chair, State Banking Board Glen (Brad) Williams (573) 751-3242
 Secretary, State Banking Board Robert Robuck (573) 751-3242
 Commissioner D. Eric McClure (573) 751-3242
 Chair, Residential Mortgage Board Arthur L. Poger (573) 751-3242

Office of Public Counsel*Governor Office Building, 200 Madison St., PO Box 2230, Jefferson City 65102*

Public Counsel John Coffman (573) 751-4857

Public Service Commission*Governor Office Building, 200 Madison St., PO Box 360, Jefferson City 65102*

Chair Jeff Davis (573) 751-3234
 Commissioner Linward (Lin) Appling (573) 751-3234
 Commissioner Steve Gaw (573) 751-3234
 Commissioner Robert M. Clayton III (573) 751-3234
 Commissioner Connie W. Murray (573) 751-3234
 Interim Executive Director Wess Henderson (573) 751-3234

Licensing Agencies**Division of Professional Registration***3605 Missouri Blvd., PO Box 1335, Jefferson City 65102*

Director Allison Craighead (573) 751-1081
 Manager, Accounting Sherry Hess (573) 526-3507
 Director, Budget and Legislation Kristi Wilson (573) 751-0845

Missouri State Board of Accountancy*3605 Missouri Blvd., PO Box 613, Jefferson City 65102*

President Lynda Lieberman (573) 751-0012
 Executive Director Ken Bishop (573) 751-0012

Missouri Board for Architects, Professional Engineers, Professional Land Surveyors and Landscape Architects

3605 Missouri Blvd., PO Box 184, Jefferson City 65102

Chair James Anderson(573) 751-0047
 Executive Director Judy Kempker(573) 751-0047

Office of Athletics

3605 Missouri Blvd., PO Box 1335, Jefferson City 65102

Administrator Tim Lueckenhoff(573) 751-0243
 Executive Director Becky Dunn(573) 751-0243

State Board of Barber Examiners

3605 Missouri Blvd., PO Box 1335, Jefferson City 65102

President Donald McCulloch(573) 751-0805
 Executive Director Darla Fox(573) 751-0805

State Board of Chiropractic Examiners

3605 Missouri Blvd., PO Box 672, Jefferson City 65102

President Lawrence M. Gerstein(573) 751-2104
 Executive Director Loree Kessler(573) 751-2104

State Committee for Social Workers

3605 Missouri Blvd., PO Box 1335, Jefferson City 65102

Chair M. Jenise Comer(573) 751-0885
 Executive Director Vanessa Beauchamp(573) 751-0885

State Board of Cosmetology

3605 Missouri Blvd., PO Box 1062, Jefferson City 65102

President John Tirre(573) 751-1052
 Executive Director Darla Fox(573) 751-1052

Missouri Dental Board

3605 Missouri Blvd., PO Box 1367, Jefferson City 65102

President Eric J. Aubert, D.M.D.(573) 751-0040
 Executive Director Sharlene Rimiller(573) 751-0040

State Board of Embalmers and Funeral Directors

3605 Missouri Blvd., PO Box 423, Jefferson City 65102

Chair Jerry Griffin(573) 751-0813
 Executive Director Becky Dunn(573) 751-0813

Office of Endowed Care Cemeteries

3605 Missouri Blvd., PO Box 1335, Jefferson City 65102

Chair Hillman Crowell(573) 751-0849
 Administrator Rodger Fitzwater(573) 751-0849

State Board of Registration for the Healing Arts

3605 Missouri Blvd., PO Box 4, Jefferson City 65102

President Dr. Nancy Russell(573) 751-0098
 Executive Director Tina Steinman(573) 751-0098

Board of Examiners for Hearing Instrument Specialists

3605 Missouri Blvd., PO Box 1335, Jefferson City 65102

Chair Charlotte Connell(573) 751-0240
 Acting Executive Director Dana Hoelscher(573) 751-0240

State Board of Nursing*3605 Missouri Blvd., PO Box 656, Jefferson City 65102*

PresidentRobin Vogt(573) 751-0681
 Executive DirectorLori Scheidt(573) 751-0681

State Board of Optometry*3605 Missouri Blvd., PO Box 423, Jefferson City 65102*

PresidentDanny Nestleroad, O.D.(573) 751-0814
 Executive DirectorSharlene Rimiller(573) 751-0814

State Board of Pharmacy*3605 Missouri Blvd., PO Box 625, Jefferson City 65102*

PresidentDouglas R. Lang, R.Ph.(573) 751-0091
 Executive DirectorKevin Kinkade(573) 751-0091

Advisory Commission for Professional Physical Therapists*3605 Missouri Blvd., PO Box 4, Jefferson City 65102*

ChairMelinda Christianson(573) 751-0098
 Executive DirectorTina Steinman(573) 751-0098

State Board of Podiatric Medicine*3605 Missouri Blvd., PO Box 423, Jefferson City 65102*

PresidentDr. Terry Klamet(573) 751-0873
 Executive DirectorBecky Dunn(573) 751-0873

Committee for Professional Counselors*3605 Missouri Blvd., PO Box 1335, Jefferson City 65102*

ChairKeith Spare(573) 751-0018
 Executive DirectorLoree Kessler(573) 751-0018

Committee of Psychologists*3605 Missouri Blvd., PO Box 1335, Jefferson City 65102*

ChairGlen Good, Ph.D.(573) 751-0099
 Executive DirectorPam Groose(573) 751-0099

Real Estate Appraisers' Commission*3605 Missouri Blvd., PO Box 1335, Jefferson City 65102*

ChairSharon Lowman(573) 751-0038
 Executive DirectorRodger Fitzwater(573) 751-0038

Missouri Real Estate Commission*3605 Missouri Blvd., PO Box 1339, Jefferson City 65102*

ChairAndrea Lawrence(573) 751-2628
 Executive DirectorJanet Carder(573) 751-2628

Advisory Commission for Speech Pathologists and Clinical Audiologists*3605 Missouri Blvd., PO Box 4, Jefferson City 65102*

Commission ChairJeanne Hamlin(573) 751-0098
 Executive DirectorTina Steinman(573) 751-0098

Missouri Veterinary Medical Board*3605 Missouri Blvd., PO Box 633, Jefferson City 65102*

ChairRoger Shaw Jr.(573) 751-0031
 Executive DirectorDana Hoelscher(573) 751-0031

State Committee for Marital and Family Therapists

3605 Missouri Blvd., PO Box 1335, Jefferson City 65102

Chair	Dr. Elizabeth Kingsley	(573) 751-0870
Executive Director	Loree Kessler	(573) 751-0870

State Committee of Interpreters

3605 Missouri Blvd., PO Box 1335, Jefferson City 65102

Chair	Loretto Durham	(573) 526-7787
Executive Director	Pam Groose	(573) 526-7787

Board of Geologist Registration

3605 Missouri Blvd., PO Box 1335, Jefferson City 65102

Chair	Guy C. Gilbert	(573) 526-7625
Executive Director	Pam Groose	(573) 526-7625

Missouri Board of Occupational Therapy

3605 Missouri Blvd., PO Box 1335, Jefferson City 65102

Chair	Judy Phillips	(573) 751-0877
Executive Director	Vanessa Beauchamp	(573) 751-0877

Missouri Board for Respiratory Care

3605 Missouri Blvd., PO Box 1335, Jefferson City 65102

Chair	Martha Gragg, R.N., M.S.N., C.P.H.Q.	(573) 522-5864
Executive Director	Kevin Kinkade	(573) 522-5864

Interior Design Council

3605 Missouri Blvd., PO Box 1335, Jefferson City 65102

Chair	Beth Harmon-Vaughan	(573) 522-4683
Executive Director	Rodger Fitzwater	(573) 522-4683

State Committee of Dietitians

3605 Missouri Blvd., PO Box 1335, Jefferson City 65102

Chair	Marie Carter	(573) 522-3438
Executive Director	Rodger Fitzwater	(573) 522-3438

Massage Therapists

3605 Missouri Blvd., PO Box 1335, Jefferson City 65102

Chair	Elizabeth Miller	(573) 522-6277
Executive Director	Loree Kessler	(573) 522-6277

Missouri Acupuncturist Advisory Committee

3605 Missouri Blvd., PO Box 1335, Jefferson City 65102

Chair	Jane Van Sant	(573) 526-1555
Executive Director	Loree Kessler	(573) 526-1555

Tattooing, Branding and Body Piercing

3605 Missouri Blvd., PO Box 1335, Jefferson City 65102

Executive Director	Vanessa Beauchamp	(573) 526-8288
--------------------	-------------------	----------------

Athletic Trainer Advisory Committee

3605 Missouri Blvd., PO Box 4, Jefferson City 65102

Chair	Ron Dunn	(573) 751-0098
Executive Director	Tina Steinman	(573) 751-0098

Advisory Commission for Clinical Perfusionists

3605 Missouri Blvd., PO Box 4, Jefferson City 65102

ChairMike Phillips(573) 751-0098
Executive DirectorTina Steinman(573) 751-0098

Advisory Commission for Registered Physician Assistants

3605 Missouri Blvd., PO Box 4, Jefferson City 65102

ChairLynn Catrett(573) 751-0098
Executive DirectorTina Steinman(573) 751-0098

Advisory Commission for Dental Hygenists

3605 Missouri Blvd., PO Box 1367, Jefferson City 65102

ChairFrances Tourdot(573) 751-0040
Executive DirectorSharlene Rimiller(573) 751-0040

State Office of Athletic Agents

3605 Missouri Blvd., PO Box 1335, Jefferson City 65102

Executive DirectorTim Lueckenhoff(573) 751-0243

Department of Elementary and Secondary Education

PO Box 480, Jefferson City 65102

The Department of Elementary and Secondary Education was reorganized and established in its present form by the Omnibus State Reorganization Act of 1974.

The Department of Elementary and Secondary Education is primarily a service agency that works with local school officials and other groups to identify needs within the educational system and to improve educational opportunities and programs for all citizens. Through its regulatory functions, the department strives to assure the effective and efficient operation of state and federal education programs. Under the direction of the State Board of Education, the department is organized with the offices of commissioner of education, deputy commissioner, associate commissioner, and five other divisions, each of which is headed by an assistant commissioner.

The State Board of Education is a lay board consisting of eight members appointed by the governor and confirmed by the Senate. It is vested with the responsibility for the supervision of the public school system in this state and establishes policy in accordance with state and federal law for the department. The board appoints a commissioner of education who serves as chief administrative and executive officer of the department. The commissioner, along with department staff, interprets and implements policies established by the board. The commissioner is assisted by a deputy commissioner, associate commissioner, and assistant commissioners for each of the other five divisions.

State Board of Education

Jefferson State Office Building, 205 Jefferson St., PO Box 480, Jefferson City 65102

President	Thomas R. Davis	(573) 751-4446
Vice President	Peter Herschend	(573) 751-4446
Member	Shirley Langley-Hindman	(573) 751-4446
Member	David Liechti	(573) 751-4446
Member	Jeanine H. Osborn	(573) 751-4446
Member	Vanetta Rogers	(573) 751-4446
Member	Sybl Slaughter	(573) 751-4446
Member	Russell V. Thompson	(573) 751-4446
Commissioner of Education	D. Kent King	(573) 751-4446
Executive Secretary to the		
State Board of Education	Jeanne Kujath	(573) 751-4446
Assistant to the Commissioner, Education	Robin Coffman	(573) 751-7602
Deputy Commissioner, Education	Bert Schulte	(573) 751-3503
Associate Commissioner, Division		
of Administrative & Financial Services	Gerri Ogle	(573) 751-2587
Assistant Commissioner, Division		
of School Improvement	Stan Johnson	(573) 751-4234
Assistant Commissioner, Division		
of Career Education	Nancy Headrick	(573) 751-2660
Assistant Commissioner, Division		
of Teacher Quality and Urban Education	Charles Brown	(573) 751-2931

Assistant Commissioner, Division
of Special EducationMelodie Friedebach(573) 751-5739

Assistant Commissioner, Division
of Vocational RehabilitationJeanne Loyd(573) 751-3251

Superintendent, State Schools
for Severely HandicappedGary Schroer (573) 751-4427

Superintendent, Missouri School for the Blind . . .James Sucharski(314) 776-4320
3815 Magnolia Ave., St. Louis 63110

Superintendent, Missouri School for the Deaf . . .Barbara Garrison(573) 592-4000
Fulton 65251

Department of Health and Senior Services

912, 920 & 930 Wildwood Dr., PO Box 570, Jefferson City 65102

The Department of Health and Senior Services protects and promotes quality of life and health for all Missourians by developing and implementing programs and systems that provide: information and education, effective regulation and oversight, quality services, and surveillance of diseases and conditions.

The State Board of Health and the State Board of Senior Services advise the department director in planning for departmental activities and acts in an advisory capacity regarding rules promulgated by the Department of Health and Senior Services. Each board consists of seven members appointed by the governor.

The director of the department, appointed by the governor with the advice and consent of the Senate, is the chief liaison officer of the department for joint efforts with other governmental agencies and with private organizations that conduct or sponsor programs that relate to public health in Missouri.

State Board of Health

PO Box 570, Jefferson City 65102

ChairDeborah Jantsch, MD(573) 751-6001
DHSS LiaisonDesiree Mowry(573) 751-6001

State Board of Senior Services

PO Box 570, Jefferson City 65102

ChairJeffery Kerr, DO(573) 751-6001
DHSS LiaisonDesiree Mowry(573) 751-6001

Office of the Director

PO Box 570, Jefferson City 65102

DirectorJulia M. Eckstein(573) 526-6700
Chief Operating OfficerRonald W. Cates(573) 751-6002
Deputy Director, Health & Public HealthTricia Schlechte(573) 751-6459
Deputy Director, Senior Services & Regulation ..David Durbin(573) 751-8535
Departmental Operations CoordinatorMichelle Zeilman(573) 751-6001
Chief, Office of General CounselJane Drummond(573) 751-6005
Chief, Office of Governmental Policy and
LegislationAndrew Wankum(573) 751-6003
Chief, Office of PersonnelMary Hoskins, MPA(573) 751-6059
Chief, Office of Public InformationNanci Gonder(573) 751-6003
Chief, Office of Minority HealthJoy Williams(573) 526-1683
Chief, Office of Professional Development
and Strategic DevelopmentLois Heldenbrand(573) 751-6058
Chief, Office on Women's HealthTuck VanDyne(573) 526-0445
Chief, Office of EpidemiologyBao-Ping Zhu, MD, MS(573) 751-6128
Manager, Employee Disqualification ListDebbie Dean Hansen(573) 522-1119
State Long-Term Care OmbudsmanCarol Scott(573) 526-0727

Executive Secretary, Board of Nursing Home

AdministratorsDiana Love(573) 751-3511
Director, State Public Health LaboratoryEric Blank, DrPH(573) 751-3334
<i>307 W. McCarty, Jefferson City 65101</i>		

Center for Local Public Health Services*PO Box 570, Jefferson City 65102*

Center DirectorGlenda Miller(573) 526-0177
Deputy DirectorShirley Rutz(573) 751-6170
Eastern District Health Office(314) 877-2800
<i>220 S. Jefferson, St. Louis 63103</i>		
Northeastern District Health Office(660) 385-3125
<i>708 Patton St., PO Box 309, Macon 63552</i>		
Northwestern District Health Office(816) 350-5400
<i>3717 S. Whitney Ave., Independence 64055</i>		
Southeastern District Health Office(573) 840-9720
<i>2875 James Blvd, Poplar Bluff 63901</i>		
Southwestern District Health Office(417) 895-6900
<i>1414 W. Elfindale, PO Box 777, MPO, Springfield 65801</i>		

Center for Health Information Management and Evaluation*PO Box 570, Jefferson City 65102*

Center DirectorGarland Land, MPH(573) 751-6272
Center Deputy DirectorNancy Hoffman, RN, MSN(573) 751-6272
Director, Section for Health StatisticsSusan Elder(573) 751-6272
Chief, Bureau of Health Resources StatisticsNorma D'Eagle(573) 751-6279
Chief, Bureau of Health Services StatisticsMark Van Tuinen, PhD(573) 751-6274
Chief, Bureau of Health Data AnalysisJoseph Stockbauer(573) 751-6278
Chief, Bureau of Vital RecordsIvra Cross(573) 751-6381
Chief, Office of Information SystemsScott Willett(573) 751-6450

Center for Emergency Response and Terrorism*PO Box 570, Jefferson City 65102*

Center DirectorPam Walker, MPA(573) 526-4768
Deputy DirectorNancy Bush(573) 526-4768

Division of Administration*PO Box 570, Jefferson City 65102*

Director(Vacancy)(573) 751-6014
Chief, Bureau of Contracts and ProcurementCarolyn Allen(573) 751-6471
Chief, Bureau of Budget Services and AnalysisJim Carlson, MA(573) 751-6016
Chief, Bureau of Financial ServicesRenee Godsey(573) 751-6024
Chief, Bureau of General ServicesKevin Kolb(573) 751-6040
Chief, Internal AuditAugust Tegtmeier, CPA(573) 751-6014

Division of Environmental Health and Communicable Disease Prevention*PO Box 570, Jefferson City 65102*

DirectorWm. Bryant McNally, JD, MPH(573) 751-6080
Deputy DirectorSusan Jenkins(573) 751-6080
Administrator, Office of SurveillanceLyn Konstant, PhD(573) 751-9071
Administrator, Section for Environmental Public HealthScott Clardy(573) 751-6102
Administrator, Section of Communicable Disease PreventionMary Menges, MA(573) 751-6141

Division of Community Health*PO Box 570, Jefferson City 65102*

Director	Paula Nickelson	(573) 751-6252
Deputy Director	Robin Rust, MPA	(573) 751-6174
Chief, Office of Fiscal Support	Deborah Goldammer	(573) 751-0162
Chief, Office of Surveillance, Evaluation, Planning and Health Information	Sherri Homan	(573) 522-2880
Director, Section for Community Health Systems and Support	Connie Mihalevich	(573) 751-8998
Director, Section for Chronic Disease Prevention and Health Promotion	Deborah Markenson	(573) 522-2800
Director, Section for Maternal, Child and Family Health	Melinda Sanders	(573) 751-6253

Division of Senior Services and Regulation*PO Box 570, Jefferson City 65102*

Director	Nancie McAnagh	(573) 522-1252
Deputy Director	Laurie Hines	(573) 751-6069
Chief, Family Care Safety Registry	Nancy Schulte	(573) 526-1974
Chief, Office of Special Investigation	William Turner	(573) 522-4150
Chief, Office of Community Independence	Andrew Petti	(573) 526-8562
Chief, Central Registry Unit	Randy Rodgers	(573) 751-4842
Director, Section for Health Standards and Licensure	Cynthia Schmutzler	(573) 526-1864
Director, Section for Long-Term Care Regulation	Debra Cheshier	(573) 526-8524
Regional Office #1		(417) 895-6435
<i>149 Park Central Sq., Rm. 429, Springfield 65806</i>		
Regional Office #2		(573) 840-9580
<i>2875 James Blvd., Poplar Bluff 63901-3395</i>		
Regional Office #3		(816) 889-2808
<i>615 E. 13th St., Ste. 404, Kansas City 64106</i>		
Regional Office #4		(816) 632-6541
<i>207 E. McElwain, PO Box 633, Cameron 64429</i>		
Regional Office #5		(660) 385-5763
<i>1716 Prospect, Ste. C, PO Box 472, Macon 63552</i>		
Regional Office #6		(573) 751-2270
<i>3418 Knipp Dr., Ste. D, PO Box 915, Jefferson City 65102</i>		
Regional Office #7		(314) 340-7360
<i>111 N. Seventh St., Rm. 500, St. Louis 63101</i>		
Director, Section for Senior Services	Brenda Campbell, MPA	(573) 526-3626
Home and Community Services Region #1		(417) 895-6456
<i>1721 W. Ellindale, Ste. 207, Springfield 65806</i>		
Home and Community Services Region #2		(573) 290-5211
<i>338 Broadway, Ste. 200, Cape Girardeau 63701</i>		
Home and Community Services Region #3		(314) 340-3451
<i>Wainwright Building, 4th Fl., 111 N. Seventh St., St. Louis 63101</i>		
Home and Community Services Region #4		(816) 387-2104
<i>525 Jules St., Rm. 319, St. Joseph 64501</i>		
<i>514 E. 13th St., Ste. 401, Kansas City 64106</i>		
Home and Community Services Region #5		(660) 385-3125
<i>708 Patton St., Macon 63552</i>		

Home and Community Services Region #6(573) 884-6310
1500 Vandiver Dr., Ste. 102, Columbia 65202

Missouri Health Facilities Review Committee/
Certificate of Need Program(573) 751-6403

Missouri SenioRx Program(573) 522-3066
1-866-556-9316

Department of Higher Education

3515 Amazonas Dr., Jefferson City 65109
www.dhe.mo.gov

The Missouri Coordinating Board for Higher Education (CBHE) was authorized by an amendment to the Missouri Constitution in 1972 and established by statute in the Omnibus State Reorganization Act of 1974. The nine members are appointed by the governor, confirmed by the Senate, and represent each Missouri congressional district. The board members serve six-year terms; no more than five of the nine members may be affiliated with the same political party. The CBHE’s primary goals in statewide planning and coordination are to promote academic quality, to ensure the efficient use of resources, and to provide financial and geographic access to Missouri’s system of higher education.

The department is the administrative arm of the CBHE. The functions of the department include statewide planning for post-secondary education, evaluation of student and institutional performance, identification of statewide needs for higher education, development of effective and economical specialization among institutions, submission of a unified budget request for public higher education to the governor and the Missouri General Assembly, review and enhancement of institutional missions, and approval of new degree programs offered at the public colleges and universities. In addition, the department administers a variety of student financial assistance programs, the proprietary school certification program, and the State Anatomical Board.

The board employs a commissioner of higher education to carry out its goals and administrative responsibilities. The state system of higher education includes 13 public four-year colleges and universities, 19 public two-year campuses, 1 public two-year technical college, 25 independent colleges and universities, and 140 proprietary schools.

Coordinating Board for Higher Education

Chair	Lowell C. Kruse	St. Joseph
Member	Martha L. Boswell	Columbia
Member	Diana Bourisaw	St. Louis
Member	Marie Carmichael	Springfield
Member	Jeanne M. Patterson	Belton
Member	Kathryn Swan	Cape Girardeau
Member	Gregory Upchurch	St. Louis
Member	(Vacancy)	
Member	Earl Wilson Jr.	St. Louis

Administrative

3515 Amazonas Dr., Jefferson City 65109	FAX (573) 751-6635
Commissioner of Higher Education	Dr. Gregory G. Fitch (573) 751-2361
Deputy Commissioner and Director of Fiscal, Legislative and Administration Group	Joseph Martin (573) 751-2361
Associate Commissioner and Director of Academic Affairs Group	Dr. Robert Stein (573) 751-2361
Assistant Commissioner and General Counsel	Dr. James Matchefts (573) 751-2361
Director of Communications and Customer Assistance Group	Susanne Medley (573) 751-2361

Director of Educational Policy, Planning and Improvement Center	John Wittstruck	(573) 751-2361
Director of Missouri Student Loan Group	Scott Giles	(573) 751-2361
Director of Financial Assistance and Outreach Group	Dan Peterson	(573) 751-2361
Director of Information Technology Group	Gina Hodge	(573) 751-2361

Missouri State Anatomical Board

President	Dr. Lex C. Towns	(660) 626-2349
<i>Department of Anatomy, A.T. Still University of Health Services 800 W. Jefferson, Kirksville 63501. E-mail: ltowns@atsu.edu</i>		
Vice President	Dr. Margaret H. Cooper	(314) 977-8045
<i>Department of Surgery, St. Louis University School of Medicine 221 N. Grand Ave., St. Louis 63103. E-mail: coopermh@slu.edu</i>		
Secretary-Treasurer	Dr. Tom C. Scanlon	(573) 884-6599
<i>Department of Pathology and Anatomical Sciences, University of Missouri-Columbia 105 Jesse Hall, Columbia 65211. E-mail: scanlont@health.missouri.edu</i>		

Public Institutions of Higher Education

University of Missouri System

President	Dr. Elson Floyd	(573) 882-2121
University of Missouri-Columbia	Dr. Brady Deaton	(573) 882-2121
<i>105 Jesse Hall, Columbia 65211 Chancellor</i>		
University of Missouri-Kansas City	Dr. Elson Floyd	(816) 235-1000
<i>5100 Rockhill Rd., Kansas City 64110 Interim Chancellor</i>		
University of Missouri-Rolla	Dr. Gary Thomas	(573) 341-4114
<i>206 Parker Hall, Rolla 65409-0470 Chancellor</i>		
University of Missouri-St. Louis	Dr. Thomas George	(314) 516-5000
<i>8001 Natural Bridge Rd., St. Louis 63121 Interim Chancellor</i>		

Colleges and Universities

Central Missouri State University	Dr. Bobby Patton	(660) 543-4111
<i>Administration 202, Warrensburg 64093 President</i>		
Harris-Stowe State College	Dr. Henry Givens Jr.	(314) 340-3366
<i>3026 Laclede Ave., St. Louis 63103 President</i>		
Lincoln University	Dr. Carolyn Mahoney	(573) 681-5000
<i>820 Chestnut, Jefferson City 65101 President</i>		
Missouri Southern State University-Joplin	Dr. Julio Leon	(417) 625-9300
<i>3950 E. Newman Rd., Joplin 64801-1595 President</i>		
Missouri Western State College	Dr. James Scanlon	(816) 271-4200
<i>4525 Downs Dr., St. Joseph 64507-2294 President</i>		
Northwest Missouri State University	Dr. Dean Hubbard	(660) 562-1212
<i>800 University Dr., Maryville 64468-6001 President</i>		
Southeast Missouri State University	Dr. Kenneth Dobbins	(573) 651-2000
<i>One University Plaza, Cape Girardeau 63701 President</i>		
Southwest Missouri State University	Dr. John Keiser	(417) 836-5000
<i>901 S. National Ave., Springfield 65804 President</i>		
Southwest Missouri State University-West Plains	Col. Kent Thomas	(417) 255-7900
<i>128 Garfield, West Plains 65775 Chancellor</i>		
Truman State University	Dr. Barbara Dixon	(660) 785-4000
<i>100 E. Normal, Kirksville 63501-9980 President</i>		

Community Colleges

Crowder College	Dr. Steven Gates	(417) 451-3223
601 Laclede Ave., Neosho 64850 President		
East Central College	Dr. Karen Herzog	(636) 583-5193
1964 Prairie Dell Rd., Union 63084 President		
Jefferson College	William McKenna	(636) 797-3000
1000 Viking Dr., Hillsboro 63050-1000 President		
Metropolitan Community Colleges	Dr. Wayne Giles	(816) 759-1000
3200 Broadway, Kansas City 64111 Chancellor		
Blue River Community College	Malcolm Wilson	(816) 655-6050
1501 W. Jefferson St., Blue Springs 64015 President		
Business and Technology College	Gary Sage	(816) 482-5210
6899 Executive Dr., Kansas City 64120 President		
Longview Community College	Dr. Fred Grogan	(816) 672-2000
500 S.W. Longview Rd., Lee's Summit 64081 President		
Maple Woods Community College	Dr. Merna Saliman	(816) 437-3000
2601 N.E. Barry Rd., Kansas City 64156-1299 President		
Penn Valley Community College	Dr. Jackie Snyder	(816) 759-4000
3201 Southwest Trafficway, Kansas City 64111 President		
Mineral Area College	Dr. Terry Barnes	(573) 431-4593
5270 Flat River Rd., Park Hills 63601 President		
Moberly Area Community College	Dr. Evelyn Jorgenson	(660) 263-4110
101 College Ave., Moberly 65270 President		
North Central Missouri College	Dr. Neil Nuttall	(660) 359-3948
1301 Main St., Trenton 64683 President		
Ozarks Technical Community College	Dr. Norman Myers	(417) 895-7000
1001 E. Brower, Springfield 65801 President		
St. Charles Community College	Dr. John McGuire	(636) 922-8000
4601 Mid Rivers Mall Dr., St. Peters 63376 President		
St. Louis Community College	Dr. Henry Shannon	(314) 539-5000
300 S. Broadway, St. Louis 63102 Chancellor		
St. Louis Community College at Florissant Valley	Dr. Ron Smith	(314) 595-4200
3400 Pershall Rd., St. Louis 63135 President		
St. Louis Community College at Forest Park	Dr. William Kennedy	(314) 644-9100
5600 Oakland Ave., St. Louis 63110 President		
St. Louis Community College at Meramec	Dr. E. Lynn Suydam	(314) 984-7500
11333 Big Bend Blvd., St. Louis 63122 President		
State Fair Community College	Dr. Marsha Drennon	(660) 530-5800
3201 W. 16th St., Sedalia 65301-2199 President		
Three Rivers Community College	Dr. John Cooper	(573) 840-9600
Three Rivers Blvd., Poplar Bluff 63901 President		

Two-year Technical College

Linn State Technical College	Dr. Donald Claycomb	(573) 897-5000
One Technology Dr., Linn 65051 President		

Department of Insurance

301 W. High, PO Box 690, Jefferson City 65102-0690

The Department of Insurance's primary responsibility is to protect the consumer by regulating insurance companies, agencies, agents and brokers doing business in Missouri.

The Department of Insurance, with functions dating from 1869, was created by constitutional amendment effective July 1, 1991. Previously, the department was a division within the Department of Economic Development. The department has four divisions: Resource Administration, Consumer Affairs, Financial Regulation and Market Regulation. The executive staff includes the department director, assistant director, general counsel and division directors.

The Division of Resource Administration, information systems, budgeting and other coordinates provide support for the department. The licensing section also operates in this division.

The Division of Consumer Affairs assists the general public in resolving complaints, providing information to consumers on insurance policies and provisions and investigating alleged acts of insurance related fraud.

The Division of Financial Regulation conducts financial analysis and examination of Missouri domestic insurers to verify their financial condition. The division also ensures that company operations comply with Missouri laws and accepted insurance accounting practices.

The Division of Market Regulation has five sections that monitor the day-to-day business activities of insurance companies. The Life and Health Section and the Property and Casualty Section are responsible for reviewing insurance policy contracts, rules and rate filings. The Market Conduct Section evaluates a company's performance with consumers in the market; examinations include a review of company marketing, licensing, rate and claims. The Managed Care Section oversees policy development, implementation of new legislation and the analysis of statistical data from health maintenance organizations and entities.

Office of the Director

DirectorDale Finke(573) 751-1927
Deputy Director and General CounselDoug Ommen(573) 751-2619
Legislative LiaisonMaria Cauwenbergh(573) 526-3587
Communications DirectorMatt Barton(573) 526-4845

Division of Resource Administration

Division DirectorRochelle Hendrickson(573) 751-2562
Manager, Human ResourcesSteve Hope(573) 751-6798
Supervisor, Support ServicesShirley Gerling(573) 751-1942
Budget OfficerGrady Martin(573) 526-2938
Supervisor, LicensingMike Duffeck(573) 751-3518
Manager, Information SystemsTim Dwyer(573) 751-1952

Division of Consumer Affairs

Consumer Toll Free Hotline (800) 726-7390; TT (573) 526-4536

Division DirectorMary Kempker(573) 751-1923
Manager, Consumer Affairs(Vacancy)(573) 751-1923

Branch Manager/St. LouisFred Schumpe(314) 340-6831
 Branch Manager/Kansas CityD.A. Collins(816) 889-2381
 Manager, InvestigationsKathryn Turner(573) 751-1922

Division of Financial Regulation

Chief Examiner/Division DirectorKirk Schmidt(573) 526-4877
 Supervisor, Financial AnalysisKim Tones(573) 526-4912
 Supervisor, Premium TaxCynthia Struempf(573) 751-1929
 Supervisor, Surplus LinesBetty Kay Christian(573) 526-1589

Division of Market Regulation

Division DirectorLinda Bohrer(573) 751-2425
 Supervisor, Market Conduct ExaminationMike Woolbright(573) 751-2425
 Supervisor, Life and HealthWin Nickens(573) 751-4363
 Supervisor, Managed CareMolly White(573) 526-8767
 Supervisor, Property and CasualtySusan Schulte(573) 751-3365
 Statistical ManagerBrent Kabler(573) 526-2945

Department of Labor and Industrial Relations

3315 W. Truman Blvd., PO Box 504, Jefferson City 65102-0504, (573) 751-4091
 FAX: (573) 751-4135, www.dolir.mo.gov

The Missouri Department of Labor and Industrial Relations is responsible for administering programs that: provide an income for workers to offset the loss of a job because of an injury or layoff; mediate and issue resolutions between management and labor groups; regulate wages for public works and construction projects; promote safe working environments; enforce Missouri's anti-discriminatory statutes and protect Missouri citizens in the areas of housing, employment and public accommodations.

Agencies operating within the department are: Labor and Industrial Relations Commission; Division of Employment Security; Division of Workers' Compensation; Division of Labor Standards; Missouri Commission on Human Rights; State Board of Mediation and Administration.

The Labor Commission consists of three members, appointed by the governor and confirmed by the Senate. As part of their duties, the commission hears appeals from all decisions and awards workers' compensation, unemployment compensation, prevailing wage cases and victims of crime compensation cases.

The director of the Department of Labor and Industrial Relations is nominated by the commission and appointed by the governor, subject to the advice and consent of the Senate, to be the chief administrative officer of the department.

Labor and Industrial Relations Commission

3315 W. Truman Blvd., PO Box 599, Jefferson City 65102-0599

Chair William F. Ringer (573) 751-2461
 Commissioner (Employee representative) John J. Hickey (573) 751-2461
 Commissioner (Employer representative) Alice A. Bartlett (573) 751-2461

Office of the Director

3315 W. Truman Blvd., PO Box 504, Jefferson City 65102-0504

Director Tom Deuschle (573) 751-9691
 Deputy Director Cynthia A. Quetsch (573) 751-9691

Division of Employment Security

421 E. Dunklin St., PO Box 59, Jefferson City 65104-0059

Director Katharine Barondeau (573) 751-8086

Division of Labor Standards

3315 W. Truman Blvd., PO Box 449, Jefferson City 65102-0449

Director Colleen White (573) 751-3403

Division of Workers' Compensation

3315 W. Truman Blvd., PO Box 58, Jefferson City 65102-0058

Director Patricia (Pat) Secrest (573) 751-4231

Missouri Commission on Human Rights

3315 W. Truman Blvd., PO Box 1129, Jefferson City 65102-1129

Executive DirectorDonna Cavitte(573) 751-3325

State Board of Mediation

3315 W. Truman Blvd., PO Box 591, Jefferson City 65102-0591

ChairJohn A. Birch(573) 751-3614

Administration

421 E. Dunklin St., PO Box 59, Jefferson City 65102-0059

DirectorRobert A. Crouch(573) 751-3978

Department of Mental Health

1706 E. Elm St., PO Box 687, Jefferson City 65102

The Department of Mental Health was established as a cabinet-level state agency by the Omnibus State Reorganization Act of 1974.

The department's mission as specified by law is: to prevent mental disorders, developmental disabilities and substance abuse; to treat, habilitate and rehabilitate Missourians who suffer from those conditions; and to improve public understanding and attitudes about mental disorders, developmental disabilities and substance abuse.

The principal policy advisor to the department is the seven-member Mental Health Commission, a citizen commission that appoints the director with the confirmation of the Senate. The director is responsible for overall operations of the department, its three operating divisions, five support offices, facilities and central office.

Mental Health Commission

Chair	Clifford Sargeon	Raytown
Secretary	Mary Louise Bussabarger	Columbia
Member	Alan Baumgartner	Auxvasse
Member	John Constantino, MD	St. Louis
Member	Shirley Fearon	Raytown
Member	George Gladis	St. Louis
Member	Larry Jones, MD	St. Louis

Administrative

1706 E. Elm St., PO Box 687, Jefferson City 65102

(573) 751-4122, (800) 364-9687, FAX (573) 526-8224, TT (573) 526-1201

Director	Dorn Schuffman	(573) 751-3070
Deputy Director	Linda Roebuck	(573) 751-4970
Assistant to the Director	Monica Anthony	(573) 751-6686
Administrative Assistant	Donna Lacy	(573) 751-9181
Deputy Director, Administration	Mildred Glasper	(573) 751-8144
Director, Human Resources	Patrick Murphy	(573) 751-8562
Director, Public Affairs	Jeanne Henry	(573) 751-4423
Director, Quality Management	Rebecca Carson	(573) 751-7779
Director, Information Systems	Gary Lyndaker	(573) 751-9121
Director, Psychiatry/Medical Director	Joseph Parks, MD	(573) 751-2794
Legislative Liaison	Bob Bax	(573) 751-8033
General Counsel	Mary Tansey	(573) 751-8091
Director, Consumer Affairs	Christine Squibb	(573) 751-8093

Division of Alcohol and Drug Abuse

(573) 751-4942, FAX (573) 751-7814, TT (573) 751-4942

Director	Michael Couty	(573) 751-9499
Deputy Division Director	Mark Stringer	(573) 751-4942
Deputy Division Director of Administration	Marsha Buckner	(573) 751-4942
Deputy Division Director of Federal Programs	Pamela Leyhe	(573) 751-4942

Missouri Advisory Council on Alcohol and Drug Abuse

ChairRhonda D. Wilkes(573) 656-5283
413 Poplar Street, Poplar Bluff 63901, FAX (573) 334-7386
 Vice ChairLuis Cordova(816) 419-8844
112 E. Sparks, #4, Warrensburg 64093, FAX (660) 653-4293

Division of Comprehensive Psychiatric Services

(573) 751-8017, FAX (573) 751-7815, TT (573) 751-8017

DirectorDiane McFarland.(573) 751-3035
 Deputy Division DirectorLaurent Javois(573) 751-9482
 Director, Administration and
 Quality ManagementSteve Reeves(573) 522-1324
 Director, Forensic ServicesRichard Gowdy, PhD(573) 751-9647

Hospital Systems**Central Area**

600 E. Fifth St., Fulton 65251

Chief Executive OfficerFelix Vincens, PhD(573) 592-3412
 Administrative AssistantCeri Stevens(573) 592-3412

Fulton State Hospital

600 E. Fifth St., Fulton 65251, TT (573) 592-3498

Chief Operating OfficerAnthony Mendiitto, PhD(573) 592-4100
 Administrative AssistantTina Lee(573) 592-4100
 Chief Financial OfficerKen Lyle.(573) 592-4100
 Medical DirectorJudy Fisher, DO(573) 592-4100
 Human Resource ManagerLori Hollinger(573) 592-4100
 Quality Improvement OfficeMarty Martin(537) 592-4100

Mid-Missouri Mental Health Center

#3 Hospital Dr., Columbia 65201, TT (573) 884-1213

Chief Operating OfficerBob Reitz, PhD(573) 884-1300
 Administrative AssistantNancy Rapp(573) 884-1300
 Chief Financial OfficerKen Lyle(573) 592-4100
 Medical DirectorRon Lacey(573) 884-1300
 Human Resource ManagerLori Hollinger(573) 592-4100
 Quality Improvement OfficerMarty Martin(573) 592-4100

Southwest Missouri Psychiatric Rehabilitation Center

1301 Industrial Parkway E., El Dorado Springs 64744, TT (417) 876-2604

Chief Operating OfficerDenise Norbury(417) 876-1002
 Administrative AssistantConnie Esry(417) 876-1002
 Chief Financial OfficerKen Lyle(573) 592-4100
 Medical Director.....Shashi Polavarapu, MD(417) 876-1002
 Human Resource ManagerLori Hollinger(573) 592-4100
 Quality Improvement OfficerMarty Martin(573) 592-4100

Eastern Area

5300 Arsenal St., St. Louis 63139

Chief Executive OfficerMarylois Lacey(314) 877-5981
 Administrative AssistantKathy Moehrle(314) 877-5981

St. Louis Psychiatric Rehabilitation Center*5300 Arsenal St., St. Louis 63139, TT (314) 877-6503*

Chief Operating OfficerCurt Trager(314) 877-6500
Administrative AssistantRoena Whitt(314) 877-6500
Chief Financial OfficerLaura Wayer(314) 877-6500
Medical DirectorLori DeRosear, DO(314) 877-6500
Human Resource ManagerToni Murril(314) 877-6500
Quality Improvement OfficerClive Woodward(314) 877-6500

Metropolitan St. Louis Psychiatric Center*5351 Delmar, St. Louis 63112, TT (314) 877-0775*

Chief Operating OfficerAnthony Cuneo(314) 877-0500
Administrative AssistantColette Strickland(314) 877-0500
Chief Financial OfficerLaura Wayer(314) 877-0500
Medical DirectorRakhshanda Hassan, MD(314) 877-0500
Human Resource ManagerToni Murrill(314) 877-6500
Quality Improvement OfficerClive Woodward(314) 877-6500

Hawthorn Children's Psychiatric Hospital*1901 Pennsylvania Ave., St. Louis 63133, TT (314) 512-7800*

Chief Operating OfficerDavid Blue(314) 512-7800
Administrative AssistantCarolyn Huntington(314) 512-7800
Chief Financial OfficerLaura Wayer(314) 877-6500
Medical DirectorSharon Satterfield, MD(314) 512-7800
Human Resource ManagerToni Murril(314) 877-6500
Quality Improvement OfficerClive Woodward(314) 877-6500

Southern Area*1010 W. Columbia, Farmington 63640*

Chief Executive OfficerKaren Adams, CEO(573) 218-6792
Administrative AssistantRita Boyd(573) 218-6792

Southeast Missouri Mental Health Center*1010 W. Columbia, Farmington 63640, TT (573) 218-7018*

Chief Operating OfficerMelissa Ring, PhD(573) 218-6792
Administrative AssistantCindy Forsythe(573) 218-6792
Chief Financial OfficerJulie Inman(573) 218-6792
Medical DirectorJay Englehart, MD(573) 218-6792
Human Resource ManagerMark Remspecher(573) 218-6792
Quality Improvement OfficerDave Schmitt(573) 218-6792

Missouri Sexual Offender Treatment Center*1016 W. Columbia, Farmington 63640*

Chief Operating OfficerAlan Blake(573) 218-7045
Chief Financial OfficerJulie Inman(573) 218-6792
Medical Director(Vacancy)	
Clinical DirectorMarty Bellew-Smith, MD(573) 218-7045
Human Resource ManagerMark Remspecher(573) 218-6792
Quality Improvement OfficerDave Schmitt(573) 218-6792

Cottonwood Residential Treatment Center*1025 N. Sprigg St., Cape Girardeau 63701*

Chief Operating OfficerMartha Cassel(573) 290-5888
Chief Financial OfficerJulie Inman(573) 218-6792
Human Resource ManagerMark Remspecher(573) 218-6792
Quality Improvement OfficerDave Schmitt(573) 218-6792

Western Area*1000 E. 24th St., Kansas City 64108*

Chief Executive Officer Dick Gregory, PhD (816) 512-7510
 Administrative Assistant Carla Caradine (816) 512-7510

Northwest Missouri Psychiatric Rehabilitation Center*3505 Frederick St., St. Joseph 64506, (816) 387-2595*

Chief Operating Officer Donna Buchanan, PhD (816) 387-2300
 Administrative Assistant Diane Hargrave (816) 387-2300
 Chief Financial Officer Scott Carter (816) 512-7000
 Medical Director James Reynold, MD (816) 387-2300
 Human Resource Manager Silva Ward (816) 512-7000
 Quality Improvement Officer (Vacancy)

Western Missouri Mental Health Center*1000 E. 24th St., Kansas City 64108, TT (800) 955-8339*

Chief Operating Officer. Gloria Joseph (816) 512-7000
 Administrative Assistant Connie Kerr (816) 512-7000
 Chief Financial Officer Scott Carter (816) 512-7000
 Medical Director. Rob Hornstra, MD (816) 512-7000
 Human Resource Manager Silva Ward (816) 512-7000
 Quality Improvement Officer (Vacancy)

Missouri Advisory Council on Comprehensive Psychiatric Services

Chair Donna Lay. (417) 257-6762
7416 Star Route W, West Plains 65775
 Vice Chair Sarah Stanton (816) 404-5700
2211 Charlotte, Kansas City 64111

Division of Mental Retardation and Developmental Disabilities*(573) 751-4054, FAX (573) 751-9207, TT (573) 751-8217*

Acting Director Tony Casey, PhD (573) 751-8676
 Deputy Division Director Richard Strecker (573) 751-4054
 Deputy Division Director of
 Community Services Kent Stalder (417) 895-7400
1515 Pythian, PO Box 5030, Springfield 65801
 Deputy Division Director of
 Administrative Services Jeff Grosvenor (573) 751-8678

Missouri Planning Council for Developmental Disabilities*PO Box 687, Jefferson City 65102*

Chair Bobby O'Dell Jefferson City
 Director Susan Pritchard-Green (573) 751-8611

Habilitation Centers**Higginsville Habilitation Center***Morris Dr., PO Box 517, Higginsville 64037, FAX (660) 584-6244, TT (660) 584-3935*

Superintendent Dan Thornton (660) 584-4800
 Assistant Superintendent (Administration) Wayne Crawford (660) 584-4800

Marshall Habilitation Center*Slater St., PO Box 190, Marshall 65340, FAX (660) 886-3047, TT (660) 886-6929*

Superintendent Mary Fangmann (660) 886-2202
 Administrative Assistant/Secretary Marlene Van Horn (660) 886-2202

Administrative Assistant/SecretaryLiz Elson (660) 886-2202
 Assistant Superintendent (Habilitation)Karen Moss(660) 886-2202

Bellefontaine Habilitation Center

10695 Bellefontaine Rd., St. Louis 63137, FAX (314) 340-6199, TT (314) 340-6000

SuperintendentJerry Clubbs(314) 340-6011
 Administrative Assistant/SecretarySharon Payne(314) 340-6011
 Business ManagerWilliam Huevelman(314) 340-6065
 Assistant Superintendent (Habilitation)Becky Post(314) 340-6031

Nevada Habilitation Center

2323 N. Ash, Nevada 64772, FAX (417) 448-2138, TT (417) 448-2302

SuperintendentChris Baker(417) 448-1124
 Administrative Assistant/SecretaryBobbie Jones(417) 448-1124
 Assistant Superintendent (Administration)Pat Moomaw(417)-448-1150
 Assistant Superintendent (Habilitation)(Vacancy)

Southeast Missouri Residential Services

PO Box 460, Poplar Bluff 63902, FAX (573) 840-9373, TT (573) 840-9312

DirectorTony Harris(573) 840-9370

St. Louis Developmental Disabilities Treatment Center

2111 N. Lindbergh, St. Louis 63141-7809, FAX (314) 340-6724, TT (314) 340-6659

SuperintendentDiana Gibbons(314) 340-6701
 Administrative Assistant/SecretaryMindy Boehringer(314) 340-6701
 Assistant Superintendent (Administration)Wanda Elliot(314) 340-6716
 Acting Assistant Superintendent (Habilitation)Ira Jones(314) 340-6714

Northwest Habilitation Center

11 Brady Circle, West Overland 63114, FAX (314) 428-7091

Unit Manager(Vacancy)(314) 890-3320

St. Charles Habilitation Center

22 Marr Ln., St. Charles 63303, FAX (636) 926-1372

Acting Unit ManagerDustin Davis(636) 926-1300

South County Habilitation Center

2312 Lemay Ferry Rd., St. Louis 63126, (314) 894-5440

Unit ManagerBill Montgomery(314) 894-5400

Regional Centers

Albany Regional Center

809 N. 13th, Albany 64402, FAX (660) 726-5612, TT (660) 726-5844

Acting DirectorGail Clair(660) 726-5246
 Administrative Assistant/SecretaryConnie Nail(660) 726-1528
 Assistant Director (Habilitation)Gary Davis(660) 726-1526

Central Missouri Regional Center

101 Park DeVille Dr., Ste. B, Columbia 65203, FAX (573) 884-4294, TT (573) 882-9835

DirectorSandy Wise(573) 882-9835
 Administrative Assistant/SecretaryKaren Alexander(573) 882-9835
 Assistant Director (Habilitation)Lisa Turner(573) 882-9835

Hannibal Regional Center

805 Clinic Rd., PO Box 1108, Hannibal 63401, FAX (573) 248-2408, TT (573) 248-2415

DirectorLinda Bowers(573) 248-2400

Administrative AssistantMary Schafer(573) 248-2400
 Assistant Director (Habilitation)Lois Warren(573) 248-2400

Joplin Regional Center

3600 E. Newman Rd., PO Box 1209, Joplin 64802-1209, FAX (417) 629-3026, TT (417) 629-4290
 DirectorDiana Garber(417) 629-3020
 Administrative Assistant/SecretaryCathy Ross(417) 629-3020
 Assistant Director (Administration)Larry Moore(417) 629-3020
 Assistant Director (Habilitation)Penny Moorehouse-Coates(417) 629-3020

Kansas City Regional Center

821 E. Admiral Blvd., PO Box 412557, Kansas City 64106, FAX (816) 889-3325, TT (816) 889-3326
 DirectorGail Clair(816) 889-3420
 Administrative Assistant/SecretaryPatty Colling(816) 889-3420
 Assistant Director (Administration)Jerry Carpenter(816) 889-3419
 Assistant Director (Habilitation)Linda Ward(816) 889-3484

Kirkville Regional Center

1702 E. LaHarpe St., Kirksville 63501, FAX (660) 785-2520, TT (660) 785-2500
 DirectorLinda Bowers(660) 785-2500
 Administrative Assistant/SecretaryDebbie Lee(660) 785-2500
 Assistant Director (Habilitation)(Vacancy)(660-785-2500)

Poplar Bluff Regional Center

PO Box 460, Poplar Bluff 63902, FAX (573) 840-9311, TT (573) 840-9312
 DirectorKim Crites(573) 840-9300
 Administrative Assistant/SecretarySherry Wagner(573) 840-9300
 Assistant Director (Administration)(Vacancy)(573) 840-9300

Rolla Regional Center

105 Fairgrounds Rd., PO Box 1098, Rolla 65402, FAX (573) 368-2206, TT (573) 368-2200
 DirectorSandy Wise(573) 368-2200
 Administrative Assistant/SecretaryBetty Brumble(573) 368-2200
 Assistant Director (Habilitation)Marcy Volner(573) 368-2200

Sikeston Regional Center

112 Plaza Dr., PO Box 966, Sikeston 63801, FAX (573) 472-1354, TT (573)-472-5391
 DirectorKim Crites(573) 472-5300
 Administrative Assistant/SecretaryPat Jones(573) 472-5300
 Assistant Director (Administration)(Vacancy)(573) 472-5300
 Assistant Director (Habilitation)Terry Regenold(573) 472-5300

Springfield Regional Center

1515 E. Pythian, PO Box 5030, Springfield 65801-5030, FAX (417) 895-7412, TT (417) 895-7430
 DirectorDiana Garber(417) 895-7400
 Administrative Assistant/SecretaryLaDonna Morris(417) 895-7400
 Assistant Director (Administration)Larry Moore(417) 895-7400
 Assistant Director (Habilitation)Becky Dodds(417) 895-7400

St. Louis Regional Center–North

211 N. Lindbergh, St. Louis 63141, FAX (314) 340-6598, TT (314) 340-6500
 Executive DirectorAnita Contreras(314) 340-6703
 Administrative Assistant/SecretaryNaomi Lebsock(314) 340-6614
 Business ManagerWanda Elliott(314) 877-1202

St. Louis Regional Center–South

Campbell Plaza, 59th & Arsenal St., Ste. 1-B, St. Louis 63139, FAX (314) 877-0079, TT (314) 877-0000

Executive DirectorCindy Mueller(314) 877-0019
Administrative Assistant/SecretaryTeresa Demis(314) 877-0010
Business ManagerWanda Elliott(314) 877-1202

Department of Natural Resources

1101 Riverside Dr., PO Box 176, Jefferson City 65102

The mission of the Department of Natural Resources is to preserve, protect, restore and enhance Missouri's natural, cultural and energy resources and to inspire their enjoyment and responsible use for present and future generations. The department ensures that Missourians enjoy clean air to breathe, clean water for drinking and recreation, land that sustains a diversity of life and sustainable energy choices. The agency's 2,000 employees accomplish this work through the Outreach and Assistance Center and the divisions of Air and Land Protection, Water Protection and Soil Conservation, State Parks and Geological Survey and Resource Assessment. The department's Division of Administrative Support provides department-level administrative and management support.

The Department of Natural Resources was created in 1974. The department is managed by a director who is directly responsible to the governor.

Director	Doyle Childers	(573) 751-4732
Deputy Director	Jeff L. Staake	(573) 522-8796
Deputy Director, Policy	Ron Kucera	(573) 751-3195

Environmental Improvement and Energy Resources Authority

325 Jefferson St., PO Box 744, Jefferson City 65102

Chair	Charles Banks	(573) 751-4919
Vice Chair	William Worley	(573) 751-4919
Director	Thomas Welch	(573) 751-4919

Missouri Lewis and Clark Bicentennial Commission

100 Jefferson St., PO Box 176, Jefferson City 65102

Co-Chair	Robert Archibald	(573) 522-9019
Co-Chair	Jonathan Kemper	(573) 522-9019
Executive Director	Doug Eiken	(573) 522-9019

Petroleum Storage Tank Insurance Fund Board

830 E. High St., Ste. B, PO Box 836, Jefferson City 65102

Chair	Don McNutt	(573) 522-2352
Vice Chair	James Ford	(573) 522-2352
Executive Director	Carol Eighmey	(573) 522-2352

Division of Administrative Support

1101 Riverside Dr., PO Box 176, Jefferson City 65102

Interim Director	LaVerne Brondel	(573) 751-7961
Deputy Director	Rob Davis	(573) 751-3016

Minority Environmental Literacy Advisory Committee

1101 Riverside Dr., PO Box 176, Jefferson City 65102

Chair	Doyle Childers	(573) 751-4732
Staff Contact	LaVerne Brondel	(573) 751-7961

Outreach and Assistance Center*1101 Riverside Dr., PO Box 176, Jefferson City 65102*

Interim Director Jeff L. Staake(573) 751-1010
 Deputy Director(Vacancy)(573) 751-1010

St. Louis Urban Outreach Office

DirectorLaRhonda Garrett(314) 340-5925
4030 Chouteau, Sixth Fl., St. Louis 63110

Kansas City Urban Outreach Office

Director(Vacancy)(816) 759-7313
4750 Troost Ave., Kansas City 64110

Energy Center

DirectorAnita Randolph(573) 751-2254
1101 Riverside Dr., PO Box 176, Jefferson City 65102

Missouri Advisory Council on Historic Preservation

ChairTim Conley(573) 754-6771
405 N. Third St., Louisiana 63353

Vice ChairGreg Allen(816) 931-4905
3732 Belleview Dr., Kansas City 64111

Staff DirectorMark Miles(573) 751-7858
1101 Riverside Dr., PO Box 176, Jefferson City 65102

Unmarked Human Burial Consultation Committee

ChairDoyle Childers(573) 751-4732
1101 Riverside Dr., PO Box 176, Jefferson City 65102

Small Business Compliance Advisory Committee

ChairJack J. Lonsinger(816) 630-6575
1706 Johnson Industrial Dr., Excelsior Springs 64024

Vice ChairWalter Pearson(573) 522-8796
PO Box 176, Jefferson City 65102

Staff ContactByron Shaw(573) 526-6627
1101 Riverside Dr., Jefferson City 65101

Air and Land Protection Division*Jefferson State Office Bldg., 205 Jefferson St., PO Box 176, Jefferson City 65102*

Interim DirectorDan Schuette(573) 751-0763
 Deputy Director(Vacancy)(573) 751-1387

Air Conservation Commission*Jefferson State Office Bldg., 205 Jefferson St., PO Box 176, Jefferson City 65102*

ChairMichael Foresman(573) 526-4679
 Vice ChairErnie Brown(573) 526-4679

Staff DirectorLeanne Tippett Mosby(573) 751-7840

Hazardous Waste Management Commission

ChairBen Kessler(314) 432-4422
10687 County View Dr., Creve Coeur 63141

Interim Staff DirectorRobert Geller(573) 751-2747
1738 E. Elm, PO Box 176, Jefferson City 65102

Land Reclamation Commission

- Chair James DiPardo(573) 265-8586
13964 County Rd. 3630, St. James 65559
- Vice Chair Hugh Jenkins(660) 679-4030
RR 4, Box 793, Butler 64730
- Staff Director Larry Coen(573) 751-4041
1738 E. Elm, PO Box 176, Jefferson City 65102

Solid Waste Advisory Board

- Chair Tim Smith(417) 868-4015
940 Boonville, Rm. 305, Springfield 65802
- Vice Chair Ray Beck(573) 874-6338
PO Box 6015, Columbia 65205
- Staff Contact Jim Hull(573) 526-3900
1738 E. Elm, PO Box 176, Jefferson City 65102

Water Protection and Soil Conservation Division

- 1101 Riverside Dr., PO Box 176, Jefferson City 65102*
- Director Scott Totten(573) 751-5998
- Deputy Director Pam Bax(573) 522-9911

Safe Drinking Water Commission

- Chair Dr. John Witherspoon(573) 751-5331
1248 N. Yarberry Ct., Springfield 65802
- Vice Chair Elizabeth Grove(573) 751-5331
34146 RR 4, Stoutsville 65283
- Staff Contact Darrell Osterhoudt(573) 751-5331
1101 Riverside Dr., PO Box 176, Jefferson City 65102

Clean Water Commission

- Chair Thomas Herrmann(636) 394-6424
707 Dutch Mill Dr., Ballwin 63011-3543
- Vice Chair Davis Minton(573) 624-7424
16138 Shady Ln., Dexter 63841
- Staff Director Edward Galbraith(573) 751-6721
1101 Riverside Dr., PO Box 176, Jefferson City 65102

Soil and Water Districts Commission

- Chair Elizabeth Brown(660) 248-2704
2054 State Rd. E, Fayette 65248
- Vice Chair Larry Furbeck(816) 450-8859
22420 Jordan Rd., Dearborn 64439
- Staff Director Sarah E. Fast(573) 751-4932
1101 Riverside Dr., PO Box 176, Jefferson City 65102

Division of State Parks

- 1659 E. Elm, Jefferson City 65102*
- Director Doug Eiken(573) 751-9392
- Deputy Director Wynonna McClammer(573) 751-9392
- Deputy Director Dan Paige(573) 522-5655

Missouri State Park Advisory Board

- Chair Don Johnson(636) 931-3985
110 Jackson Terr., Festus 63028

State Inter-Agency Council for Outdoor Recreation*1101 Riverside Dr., PO Box 176, Jefferson City 65102*

ChairDoyle Childers(573) 751-4732

Geological Survey and Resource Assessment Division

Director and State GeologistMimi Garstang(573) 368-2101

Deputy DirectorBill Duley(573) 368-2101

111 Fairgrounds Rd., PO Box 250, Rolla 65401

Deputy Director, Chief of Water ResourcesMike Wells(573) 751-2876

*1101 Riverside Dr., PO Box 176, Jefferson City 65102***Dam and Reservoir Safety Council**

ChairMary Hagerty(314) 429-0100

1001 Highlands Plaza Dr. W., Ste. 300, St. Louis 63110

Vice ChairDean Freeman(660) 446-2614

33862 Holt 250, Oregon 64473

Staff DirectorJim Alexander(573) 368-2175

*111 Fairgrounds Rd., PO Box 250, Rolla 65401***Land Survey Advisory Committee**

ChairTim Ryan(816) 889-1321

1019 Admiral Blvd., Kansas City 64106

Staff DirectorJ. Michael Flowers(573) 368-2300

*111 Fairgrounds Rd., PO Box 250, Rolla 65401***State Oil and Gas Council**

ChairDr. Shari Dunn-Norman(573) 341-4840

129 McNutt Hall, University of Missouri-Rolla, Rolla 65401

Vice ChairJudy Gehrke(573) 751-9048

301 W. High St., Rm. 720, Jefferson City 65102

Staff ContactSteve Sturgess(573) 368-2115

*111 Fairgrounds Rd., PO Box 250, Rolla 65401***Well Installation Board**

ChairRobert Lawrence(573) 695-4471

125 N. Walnut, Steele 63877

Vice ChairFred Schoen(417) 345-7400

849 State Hwy. 73, Buffalo 65622

Staff ContactSteve Sturgess(573) 368-2115

111 Fairgrounds Rd., PO Box 250, Rolla 65401

Department of Public Safety

Truman State Office Building, PO Box 749, Jefferson City 65102-0749, FAX (573) 751-5399

The Department of Public Safety is responsible for coordinating all elements of law enforcement, criminal investigation and public safety activities undertaken by state government, the ultimate goal being to ensure the safety and security of Missouri's citizens and their property. This is accomplished through the activities of ten divisions: Division of Veterans' Affairs; Division of Highway Safety; Division of Liquor Control; Missouri State Water Patrol; Division of Fire Safety; Missouri State Highway Patrol; Missouri Capitol Police; Missouri Gaming Commission; Office of the Adjutant General (Missouri National Guard); and the State Emergency Management Agency.

Established by the Omnibus State Reorganization Act of 1974, the department consisted of a small central staff and seven divisions which had reported directly to the governor. Since then significant changes have occurred. The department is now responsible for 3,600 employees and a budget of more than \$200 million.

The department is under the supervision of a director, appointed by the governor with the advice and consent of the Senate.

Director	Mark James	(573) 751-5432
Executive Secretary	Margaret Bilyeu	(573) 751-5432
Deputy Director	Michael Chapman	(573) 751-5432
Legal Counsel	Jill LaHue	(573) 751-4905
Narcotics Control	Eric Shepherd	(573) 751-4905
Juvenile Justice	Sandy Remppe	(573) 751-4905
Victims' Services	Patty Rellergert	(573) 751-4905
Peace Officer Training	Jeremy Spratt	(573) 751-4905
Budget	Tom Orf	(573) 751-4905
Personnel	Mary Snyder	(573) 751-4905
Legislation	Deborah Borchers-Ausmus	(573) 751-4905
Public Information Specialist	Teresa Durdaller	(573) 751-5431

Missouri Veterans' Commission

1719 Southridge Dr., PO Drawer 147, Jefferson City 65102-0147, FAX (573) 751-6836

Executive Director	Ronald L. Taylor	(573) 751-3779
Executive Secretary	Jill Talken	(573) 522-1422
Deputy Director	Hal Dulle	(573) 522-1423
Superintendent of Homes	Anne Payne	(573) 522-1409
Director Service to Veterans	Sharon Keith	(314) 552-9890

Missouri Veterans' Homes

Administrator, St. James Veterans' Home <i>620 N. Jefferson, St. James 65559-1999</i>	Patty Faenger	(573) 265-3271
Administrator, Mt. Vernon Veterans' Home <i>600 N. Main, Mt. Vernon 65712-1098</i>	Don Long	(417) 466-7103
Administrator, Mexico Veterans' Home <i>#1 Veterans' Dr., Mexico 65265-0473</i>	Cheryl Tolbert	(573) 581-1088
Administrator, Cape Girardeau Veterans' Home <i>2400 Veterans' Memorial Dr., Cape Girardeau 63701</i>	Jan Rau	(573) 290-5870

Administrator, St. Louis Veterans' Home Stan Smith (314) 340-6389
10600 Lewis & Clark Blvd., St. Louis 63136

Administrator, Cameron Veterans' Home Bryan Hunt (816) 632-6010
1111 Euclid, Cameron 64429

Administrator, Warrensburg Veterans' Home Bill Willet (660) 543-5064
1300 Veterans' Rd., Warrensburg 64093

Missouri Veterans' Cemeteries

Director, Springfield State Veterans' Cemetery . . . Mike Robbins (417) 823-3944
5201 S. Southwood Dr., Springfield 65804

Director, Higginsville State Veterans' Cemetery . . Jess Rasmussen (660) 584-5252
20109 Business Hwy. 13, Higginsville 64037

Director, Bloomfield State Veterans' Cemetery . . Ken Swearengin (573) 568-3871
17357 Stars & Stripes Way, Bloomfield 63825-0566

Director, Jacksonville State Veterans' Cemetery . . Jerry Quigley (660) 295-4237
1479 County Rd. 1675, Jacksonville 65260

Division of Alcohol and Tobacco Control

Truman State Office Bldg., PO Box 837, Jefferson City 65102-0837, FAX (573) 526-4540

Acting State Supervisor Keith F. Fuller (573) 751-4092

Deputy Supervisor Lori Baskins (816) 889-2574

Administrative Assistant Kristy Westrich (573) 751-4092

Chief of Enforcement Steve Shimmens (573) 751-2333

Audit Services Manager Mike Schler (573) 751-2333

Fiscal Administrator Karen Gaut (573) 751-2333

District Offices:

I Joe Hodgins (816) 889-2574
Kansas City State Office Bldg., 615 E. 13th St., Rm. 506, Kansas City 64106

II Steve Shimmens (573) 751-2964
Truman State Office Bldg., Rm. 860, PO Box 837, Jefferson City 65102-0837

III Richard Weiser (314) 340-6835
Wainwright State Office Bldg., 111 N. Seventh, St. Louis 63101-2134

Missouri State Water Patrol

2401 E. McCarty, PO Box 1368, Jefferson City 65102-1368

Commissioner Col. Jerry E. Adams (573) 751-3333

Assistant Commissioner Lt. James Glover (573) 751-3333

Commander, Administrative Services Maj. Steven Payne (573) 751-3333

Commander, Field Services Maj. Joseph Hughes (573) 751-3333

Commander, Communications Capt. Hans Huenink (573) 751-3333

Commander, Criminal Investigations Cpl. Jeffery Bair (573) 751-3333

Commander, Training and Personnel Capt. Matthew Walz (573) 751-3333

Commander, Equipment and Supply Capt. Thomas Roam (573) 751-3333

Districts:

I (West Central Missouri) Capt. James E. Marlin (573) 751-3333

II (Central Missouri) Capt. Michael H. Smith (573) 348-0275

III (Southwest Missouri) Capt. Gary T. Haupt (417) 335-6081

IV (Southeast Missouri) Capt. Charles E. Bent (573) 751-3333

V (Northeast Missouri) Capt. Dale G. Sluhan (573) 751-3333

VI (Northwest Missouri) Capt. William E. Cox (816) 525-9657

Missouri Capitol Police

301 W. High St., PO Box 36, Jefferson City 65102-0036, FAX (573) 526-3898

Police Chief Todd Hurt (573) 751-2764

OperationsCapt. Paul Minze(573) 751-2764
Protective ServicesLt. Terry Ehrsam(573) 751-4141
Executive AssistantMaryAnn Craig(573) 526-6028
Communications CoordinatorSgt. Stacy Skiles(573) 526-5330
Emergency/Police Services(573) 522-2222

Missouri State Highway Patrol

1510 E. Elm St., PO Box 568, Jefferson City 65102-0568, FAX (573) 751-9419

SuperintendentCol. Roger Stottlemire(573) 751-2901
Assistant SuperintendentLt. Col. William Seibert(573) 526-6130
Administrative Services BureauMaj. H.E. McKay(573) 526-6110
Criminal Investigation BureauMaj. James Keathley(573) 526-6230
Field Operations BureauMaj. A.D. Penn(573) 751-2892
Support Services BureauMaj. L.E. Lacy(573) 526-6150
Technical Services BureauMaj. Rich Coffey(573) 526-6140

Troops:

ACapt. Vince Ellis(816) 622-0800
Lee's Summit 64063-0158FAX (816) 246-7177
BCapt. J.W. Elliott(660) 385-2132
Macon 63552-1030FAX (660) 385-3920
CCapt. Ron Johnson(314) 340-4000
St. Louis 63141-8550FAX (314) 340-4010
DCapt. John Prine(417) 895-6868
Springfield 65803-5044FAX (417) 895-6877
ECapt. G.E. Ridens(573) 840-9500
Poplar Bluff 63901-8718FAX (573) 840-9509
FCapt. D.A. Schmidt(573) 751-1000
Jefferson City 65102-0568FAX (573) 751-6814
GCapt. B.E. Chadwick(417) 469-3121
Willow Springs 65793-0010FAX (417) 469-3105
HCapt. J.B. Hoggatt(816) 387-2345
St. Joseph 64508-8580FAX (816) 387-2349
ICapt. Randy Becker(573) 368-2345
Rolla 65401-0128FAX (573) 368-2352

Division of Fire Safety

PO Box 844, Jefferson City 65102, FAX (573) 751-1744

State Fire MarshalBill Farr(573) 751-2930
Assistant State Fire MarshalRandy Cole(573) 751-2930

Office of Adjutant General

Adjutant General of MissouriBG King Sidwell(573) 638-9710
Administrative AssistantGail A. Schrimpf(573) 638-9711
Military ExecutiveCol. (Ret.) Allen Stark(573) 638-9623
Chief of StaffCol. Dwight D. Lusk(573) 638-9616
Deputy Military ExecutiveLtc. Dennis Cruts(573) 638-9630
Director of State ResourcesCol. (Ret.) William Stucker(573) 638-9609
State Personnel ManagerDonna Truman(573) 638-9845
Military SupportCol. Todd Higgins(573) 638-9623
Public AffairsCpt. Tammy Spicer(573) 638-9846
Facilities ManagementMaj. Brent Beckley(573) 638-9750
Deputy Facilities ManagementPaul Junkans(573) 638-9553
Military Records and ArchivesRon Whittle(573) 638-9890

State Emergency Management Agency

The Missouri Army National Guard Training Center, PO Box 116, Jefferson City 65102, (573) 526-9100

DirectorRonald M. Reynolds(573) 526-9101
 Deputy DirectorJim Wakeman(573) 526-9143
 Operations(Vacancy)
 Planning/Disaster RecoveryCharles May(573) 526-9112
 FiscalCraig Rodick(573) 526-9106
 Floodplain Management/MitigationGeorge Riedel(573) 526-9141

Missouri Gaming Commission

3417 Knipp Dr., PO Box 1847, Jefferson City 65102, Telephone: (573) 526-4080, FAX (573) 526-1999

Executive DirectorKevin P. Mullally(573) 526-4083
 Chief Deputy Director, EnforcementS.R. Johnson(573) 526-2329
 Deputy Director, AdministrationDeborah A. Ferguson(573) 526-4094
 Chief CounselMike Bushmann(573) 526-4082

Satellite Offices

St. Louis, 11775 Borman Dr., Ste. 104, St. Louis 63146(314) 340-4400
Kansas City, 6300 Enterprise Rd., Ste. 125, Kansas City 64120(816) 482-5700

Department of Revenue

PO Box 311, Sixth Fl., Truman State Office Building, Jefferson City 65105-0311

The Department of Revenue, created by Article IV, Section 22, of the 1945 Missouri Constitution, is responsible for the collecting taxes, titling and registering motor vehicles, and licensing drivers throughout the state.

The director, appointed by the governor and confirmed by the Senate, is responsible for all operations and policies of the department.

Three divisions administer the operations of the department: Division of Administration; Division of Motor Vehicle and Drivers Licensing; and Division of Taxation and Collection. Customer service is the number one priority for the department. The department's goal is to serve Missourians in a more efficient and effective manner while saving tax dollars.

Director	Trish Vincent	(573) 751-5671
Deputy Director	Lowell Pearson	(573) 751-2992
Chief Information Officer	Jim Weber	(573) 751-3100
General Counsel	Patricia Churchill	(573) 751-2633
<i>PO Box 475, Jefferson City 65105-0475</i>		
Director, Division of Administration	(Vacancy)	(573) 751-2566
<i>PO Box 475, Jefferson City 65105-0475</i>		
Director, Division of Motor Vehicle and Drivers Licensing	Julie Allen	(573) 751-5398
Director, Division of Taxation and Collection	Stan Farmer	(573) 751-3470

State Tax Commission

621 E. Capitol Ave., PO Box 146, Jefferson City 65102-0146

Chair	Bruce E. Davis	(573) 751-2414
Member	Jennifer Tidwell	(573) 751-2414
Member	Sam D. Leake	(573) 751-2414

Lottery Commission

1823 Southridge, PO Box 1603, Jefferson City 65102-1603

Executive Director	Jim R. Scroggins	(573) 751-4050
Director of Communications	Gary Gonder	(573) 751-4050
Director of Marketing	Adam Hall	(573) 751-4050
Director of Finance and Administration	Ron Murphy	(573) 751-4050
Director of Security	Bob Gartner	(573) 751-4050
Headquarters		
<i>1823 Southridge Dr., Jefferson City 65102</i> (573) 751-4050		
Springfield Regional Office		
<i>1506 E. Raynell, Springfield 65804</i> (417) 888-4227		
Kansas City Regional Office		
<i>3630 Arrowhead Ave., Independence 64057</i> (816) 795-8811		
St. Louis Regional Office		
<i>1831 Craig Park Ct., St. Louis 63146</i> (314) 340-5800		

Division of Taxation and Collection

Business Registration/License		(573) 751-5860
Cigarette Tax		(573) 751-7163
Corporate Income Tax		(573) 751-4541
County Taxes and Fees		(573) 751-5900

Delinquent Taxes/Balance Due (Sales/Withholding/Individual/Corporate)	(573) 751-7200
Delinquent Tax/Balance Due (Motor Vehicle)	(573) 751-3535
	(800) 347-7390
Discovery/Federal Match	(573) 751-3943
Electronic Filing	(573) 751-3930
Estate Tax	(573) 751-4768
Field Audit	(573) 751-3736
Financial Institution Tax	(573) 751-2326
Forms	(573) 751-5337
	(800) 877-6881
Forms by Fax	(573) 751-4800
Franchise Tax	(573) 751-4541
Fuel Tax	(573) 751-2611
Individual Income Tax	(573) 751-3505
Insurance Premium Tax	(573) 751-2326
Motor Vehicle Sales Tax (Delinquent)	(573) 751-3535
Motor Vehicle Refunds	(573) 751-4792
Nexus	(573) 522-3732
Other Tobacco Products	(573) 751-5772
Partnership/Fiduciary	(573) 751-1467
Property Tax Credit	(573) 751-3505
Sales/Use Tax	(573) 751-2836
Tax Clearance/No Tax Due	(573) 751-9268
Telefile/Individual Income Tax	(573) 751-3505
Telefile/Sales (Zero) and Withholding	(573) 751-3930
Tire Fee	(573) 751-2836
Transient Employers	(573) 751-0459
Voluntary Compliance	(573) 751-8612
Withholding Tax	(573) 751-5752

Division of Motor Vehicle and Drivers Licensing

Abandoned Vehicles (Property)	(573) 526-3669
ATV Decals/Replacement Decals	(573) 526-3669
Contract Agent Offices-Hours of Operation, Service Received, Etc.	(573) 751-4510
Dealer Complaints	(800) 887-3994
Dealer Registration/License	(573) 751-8343
Disabled Placards/Plates	(573) 526-3669
Driver License Issuance	(573) 751-2730
Driver License Suspensions (Alcohol Offenses-Administrative Actions)	(573) 751-4833
Driver License Suspensions (Insurance Sampling)	(573) 751-7195
Driver License Suspensions (Motor Vehicle Accidents)	(573) 751-7195
Driver License Suspensions (Traffic Violations/Points)	(573) 751-4475
Driver Improvement Programs	(573) 751-4475
Drivers Privacy Protection Act	(573) 751-4300
Identification Card (Non-driver License)	(573) 751-2730
License Plate Renewal Requirements	(573) 526-3669
Limited Driving Privileges	(573) 751-4475
Missouri Online Registration Exchange System	(573) 526-3669
Notice of Lien	(573) 526-5144
On-line Personal Property Tax System	(573) 751-3180
Records-Driver License	(573) 751-4300
Records-Motor Vehicle	(573) 526-3669
Sales Tax-Motor Vehicle	(573) 526-3669
School Bus Permits	(573) 751-3680
Specialty or Personalized Plates	(573) 526-3669
Substance Abuse Traffic Offender Program (SATOP)	(573) 751-4833
Temporary Permits	(573) 526-3669
Titling Questions and Requirements	(573) 526-3669
Vehicle Safety Inspection Inquiries	(573) 526-6128

Department of Social Services

Broadway State Office Building, PO Box 1527, Jefferson City 65102-1527

Established in 1974, the Missouri Department of Social Services includes four agencies that previously operated social programs under separate administrations. This “umbrella” structure combines the efforts of related agencies and promotes a cooperative approach toward delivering social programs to Missourians in need.

The department works to ensure the health and safety of children, to help parents and caregivers provide nurturing homes, and to aid people in need of financial assistance reach their highest level of social and economic self-sufficiency.

The director of the Department of Social Services assumes a mandate to efficiently administer federal, state, and local funds. The director also cooperates with private organizations, businesses, and individuals to extend the outreach of human services available to Missouri citizens.

DirectorK. Gary Sherman(573) 751-4815
Deputy DirectorSteve Renne(573) 751-4815
Associate DirectorChris Whitley(573) 751-4815
Legislative DirectorConnie Cunningham(573) 751-4815

Division of Budget and Finance

Broadway State Office Building, PO Box 1082, Jefferson City 65102-1082

DirectorBrian Kinkade(573) 751-7533
Deputy Director, Budget and PlanningJennifer Tidball(573) 751-2171
Deputy Director, Grants ManagementRoger Backes(573) 751-2170
Deputy Director, OperationsTheresa McDonald(573) 526-8758

Information Services and Technology Division

313 W. McCarty, Jefferson City 65101

DirectorSteven E. Adams(573) 751-4435
----------	----------------------	---------------------

Division of General Services

2724 Merchants Dr., PO Box 1643, Jefferson City 65102-1643

DirectorAl Gage(573) 751-3870
Deputy DirectorRick Contryman(573) 751-3870
Deputy DirectorJohn Giles(573) 751-3870
Program DirectorElam King(314) 877-2010

Prince Hall Family Support Center, 4411 N. Newstead, St. Louis 63115

Division of Legal Services

Broadway State Office Building, PO Box 15727, Jefferson City 65102-1527

DirectorHarry Williams(573) 751-1334
Special CounselJennifer Stilabower(573) 526-0414
Designated Principal AssistantGina Jacobs(573) 526-0424
Deputy Director, LitigationMark Gutchen(573) 751-3229
Deputy Director, InvestigationsLarry Dickerson(573) 751-0803
Deputy Director, Administrative HearingsMona Smith(573) 526-5240
Deputy Director, State Technical Assistance TeamGus Kolilis(573) 751-5980

Children's Division

615 Howerton Ct., PO Box 88, Jefferson City 65103-0088

Director	Frederic M. Simmens	(573) 526-6009
Deputy Director,		
Early Childhood and Prevention	Doris Hallford	(573) 751-6793
Deputy Director,		
Planning & Performance Management	Jim Harrison	(573) 751-2502
Deputy Director, Management Services	Shari Allen	(573) 751-4206
Assistant Deputy Director,		
Practice Development & Field Support	Bonnie Washeck	(573) 751-2427
Northern Region		
Children's Services Coordinator	Paula Neese	(573) 592-4090
	<i>106 N. Hospital Dr., PO Box 607, Fulton 65251-0607</i>	
Southern Region		
Children's Services Coordinator	Bev Long	(417) 895-6201
	<i>149 Park Central Sq., Springfield 65806</i>	
Children's Services Director	Virginia Lewis-Brunk	(816) 889-2815
	<i>Kansas City State Office Building, 615 E. 13th St., Kansas City 64106</i>	
Children's Services Director	Tena Thompson	(314) 340-7007
	<i>Wainwright State Office Building, 111 N. Seventh St., St. Louis 63101</i>	
Children's Services Director	Viki Fagyal	(314) 426-8402
	<i>9900 Page Ave., St. Louis 63132</i>	

Family Support Division

615 Howerton Ct., PO Box 2320, Jefferson City 65103-2320

Director	Denise Cross	(573) 751-4247
Deputy Director, Program and Policy	Janel Luck	(573) 751-3124
Deputy Director, Financial Management &		
Operational Services	Shari Allen	(573) 751-4206
Special Assistant to the Director	Corrine Beakley	(573) 751-4247
Deputy Director, Rehabilitation Services		
for the Blind	Mike Fester	(573) 751-4249
Deputy Director, Field Operations	Valerie Davis	(314) 877-2189
Deputy Director, Program Compliance,		
Training, Customer Relations	Alyson Campbell	(573) 522-2135
Northwest Region, IM Coordinator	Jim Simmons	(660) 543-7947
	<i>505-B N. Ridgeview, PO Box 576, Warrensburg, MO 64093</i>	
Southeast Region, IM Coordinator	Darrell Deken	(573) 624-5921
	<i>1003 Wildwood Dr., Ste. E, Dexter, MO 63841</i>	
Southwest Region, IM Coordinator	Debra Jones	(417) 895-6590
	<i>1721 W. Elfindale, Ste. 205, Springfield, MO 65807</i>	
Kansas City Region, IM Coordinator	Marge Randle	(816) 889-2500
	<i>615 E. 13th St., Kansas City, MO 64106</i>	
St. Louis Region, IM Coordinator	Bob Fant	(314) 429-6732
	<i>9900 Page Ave., St. Louis, MO 63103</i>	
Kansas City Region		
Child Support Field Liaison	Jeanine Zumalt	(816) 889-5110
	<i>301 E. Armour Blvd., Fifth Fl., Kansas City, MO 64111</i>	
St. Louis Region		
Child Support Field Liaison	Jim Carney	(314) 416-2100
	<i>7545 S. Lindbergh, Ste. 150, St. Louis, MO 63125</i>	

Division of Medical Services*615 Howerton Ct., PO Box 6500, Jefferson City 65102*

Director	Dr. Michael Ditmore	(573) 751-6922
Chief Financial Officer	Margie Mueller	(573) 751-1092
Director-Information Systems	Joel Schnedler	(573) 751-7996
Director-Program Management	Sandra K. Levels	(573) 751-6926
Director-Pharmacy	George Oestreich	(573) 751-6963
Legal Counsel	Billie Waite	(573) 751-6922

Division of Youth Services*Broadway State Office Building, PO Box 447, Jefferson City 65102-0447*

Director	Mark Steward	(573) 751-3324
Deputy Director, Treatment Services	Gail Mumford	(573) 751-2799
Deputy Director, Administrative Services	Paul Bolerjack	(573) 751-3324
Regional Administrator, Northeast Region	Larry Strecker	(573) 449-2939

1240 E. Brownschool Rd., Columbia 65202

Regional Administrator, Northwest Region	Courtney Collier	(816) 889-2428
--	------------------	----------------

934 Wyandotte, Kansas City 64105

Regional Administrator, St. Louis Region	Lew Mueller	(314) 340-6904
--	-------------	----------------

Wainwright State Office Building, 111 N. Seventh St., Rm. 331, St. Louis 63101

Regional Administrator, Southeast Region	Paula Shaw	(573) 840-9540
--	------------	----------------

1903 Northwood, Poplar Bluff 63901

Regional Administrator, Southwest Region	Tom Breedlove	(417) 895-6485
--	---------------	----------------

*1735 W. Catalpa, Ste. B, Springfield 65807***Division of Youth Services Advisory Board**

Chair	Dennis Kehm	(636) 797-5420
-------	-------------	----------------

Circuit Judge, 23rd Judicial Circuit, Courthouse, Hillsboro 63050

Vice Chair	Thelma Neff	(417) 866-3198
------------	-------------	----------------

802 N. Fairfax, Springfield 65802

Department of Transportation

*Department of Transportation Office Building, 105 W. Capitol Ave., Jefferson City 65102
(573) 751-2551, FAX: (573) 751-6555, E-mail: mail@modot.mo.gov, Website: www.modot.org*

The Department of Transportation is responsible for the five viable transportation alternatives available to Missourians: highways, aviation, waterways, transit and railroads. Those responsibilities include operation of the 32,000-mile highway system, including highway location, design, construction and maintenance.

The Missouri Highways and Transportation Commission, composed of six members, is the governing body of the department. The members are appointed by the governor, with the consent of the Senate.

The director and secretary are appointed by the commission. All other appointments are made by the director, with approval of the commission.

State Highways and Transportation Commission

Chair	Bill McKenna	(636) 942-3000, ext. 102
	<i>1120 Virginia Ave., Crystal City 63019</i>	
Vice chair	Marge Schramm	(314) 966-5135
	<i>850 Elm Tree Ln., Kirkwood 63122</i>	
Member	James B. Anderson	(417) 862-5567
	<i>PO Box 1687, 202 S. John Q. Hammons Pkwy., Springfield 65806</i>	
Member	Duane S. Michie	(573) 333-1700, ext. 230
	<i>100 W. Third St., Caruthersville 63830</i>	
Member	Wallace S. Hartsfield	(816) 923-3689
	<i>2310 E. Linwood Blvd., Kansas City 64109</i>	
Member	Larry D. Webber	(573) 581-6930
	<i>626 E. Summit St., Mexico 65265</i>	
Secretary to Commission	Mari Ann Winters	(573) 751-3704

Transportation Officials

Director's Management Team

Director	Pete Rahn	(573) 751-4622
Chief Engineer	Kevin Keith	(573) 751-2803
Director of Finance	Pat Goff	(573) 751-2803
Chief Counsel	Rich Tiemeyer	(573) 751-7454

Unit Leaders

Director of Administrative Services	Dave DeWitt	(573) 751-3720
Director of Audits & Investigations	Roberta Broeker	(573) 751-2467
Director of Governmental Affairs	Jay Wunderlich	(573) 522-1924
Director of Operations	Don Hillis	(573) 751-2856
Director of Project Development	Dave Nichols	(573) 751-4589
Director Public Information/Outreach	(Vacancy)	(573) 751-1375
Strategic Planning/Policy Manager	Mara Campbell	(573) 526-2908

Division Leaders

Controller	Jim Deresinski	(573) 751-7098
Employee Benefits Manager	Jeff Padgett	(573) 526-0138
Equal Opportunity Director	Brenda Treadwell-Martin	(573) 751-8602

External Civil Rights Administrator	Lester Woods Jr.	(573) 751-2859
General Services Director	(Vacancy)	(573) 751-3720
Highway Safety Director	(Vacancy)	(573) 751-7643
Human Resources Director	Micki Knudsen	(573) 751-2804
Information Systems Director	(Vacancy)	(573) 526-5586
MoDOT and Patrol Employees'		
Retirement System	Norm Robinson	(573) 751-5533, ext. 103
Motor Carrier Services Director	Jan Skouby	(573) 751-4021
Multimodal Operations	Brian Weiler	(573) 526-2169
Aviation	Joe Pestka	(573) 526-2169
Railroads	Rod Massman	(573) 526-2169
Transit	Steve Billings	(573) 526-2169
Resource Management Director	(Vacancy)	(573) 526-8106
Right of Way Director	Terry Sampson	(573) 526-4362
Risk Management Director	Beth Ring	(573) 751-4624
State Bridge Engineer	Shyam Gupta	(573) 751-4676
State Construction & Materials Engineer	Dave Ahlvers	(573) 751-3689
State Design Engineer	Diane Heckemeyer	(573) 751-2876
State Maintenance Engineer	Jim Carney	(573) 751-2785
State Research, Development and Technology	Mike Shea	(573) 751-0852
State Traffic Engineer	Eileen Rackers	(573) 526-0117
Transportation Planning Director	Kyle Kittrell	(573) 526-8058

District Engineers

Northwest District	Don Wichern	(816) 387-2350
<i>3602 N. Belt Hwy., PO Box 287, St. Joseph 64502</i>		
North Central District	Mike Bruemmer	(660) 385-3176
<i>902 N. Missouri St., PO Box 8, Macon 63552</i>		
Northeast District	Kirk Juranas	(573) 248-2490
<i>Hwy. 61 S., PO Box 1067, Hannibal 63401</i>		
Kansas City Area District	Beth Wright	(816) 622-6500
<i>600 N.E. Colbern Rd., Lee's Summit 64086</i>		
Central District	Roger Schwartz	(573) 751-3322
<i>1511 Missouri Blvd., PO Box 718, Jefferson City 65102</i>		
St. Louis Metro District	Ed Hassinger	(314) 340-4100
<i>1590 Woodlake Dr., Chesterfield 63017-5712</i>		
Southwest District	Richard Walter	(417) 629-3300
<i>3901 E. 32nd St., PO Box 1445, Joplin 64802</i>		
Springfield District	Dale Ricks	(417) 895-7600
<i>3025 E. Kearney, MPO 868, Springfield 65801</i>		
South Central District	Tom Stehn	(417) 469-3134
<i>910 Springfield Rd., PO Box 220, Willow Springs 65793</i>		
Southeast District	Scott Meyer	(573) 472-5333
<i>2675 N. Main St., PO Box 160, Sikeston 63801</i>		